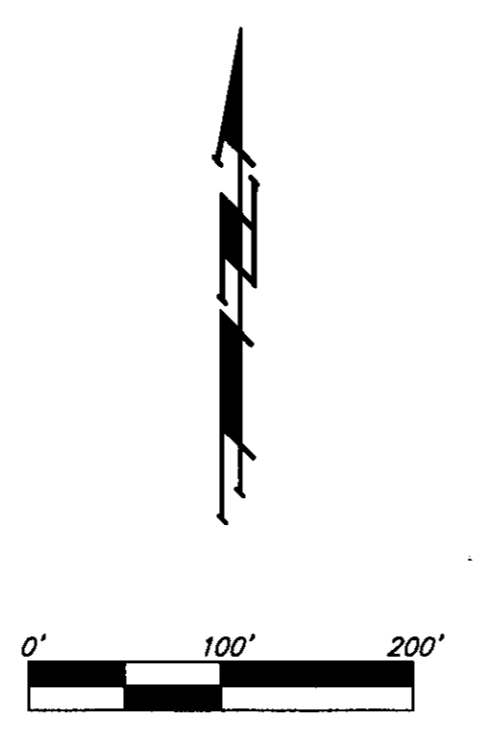
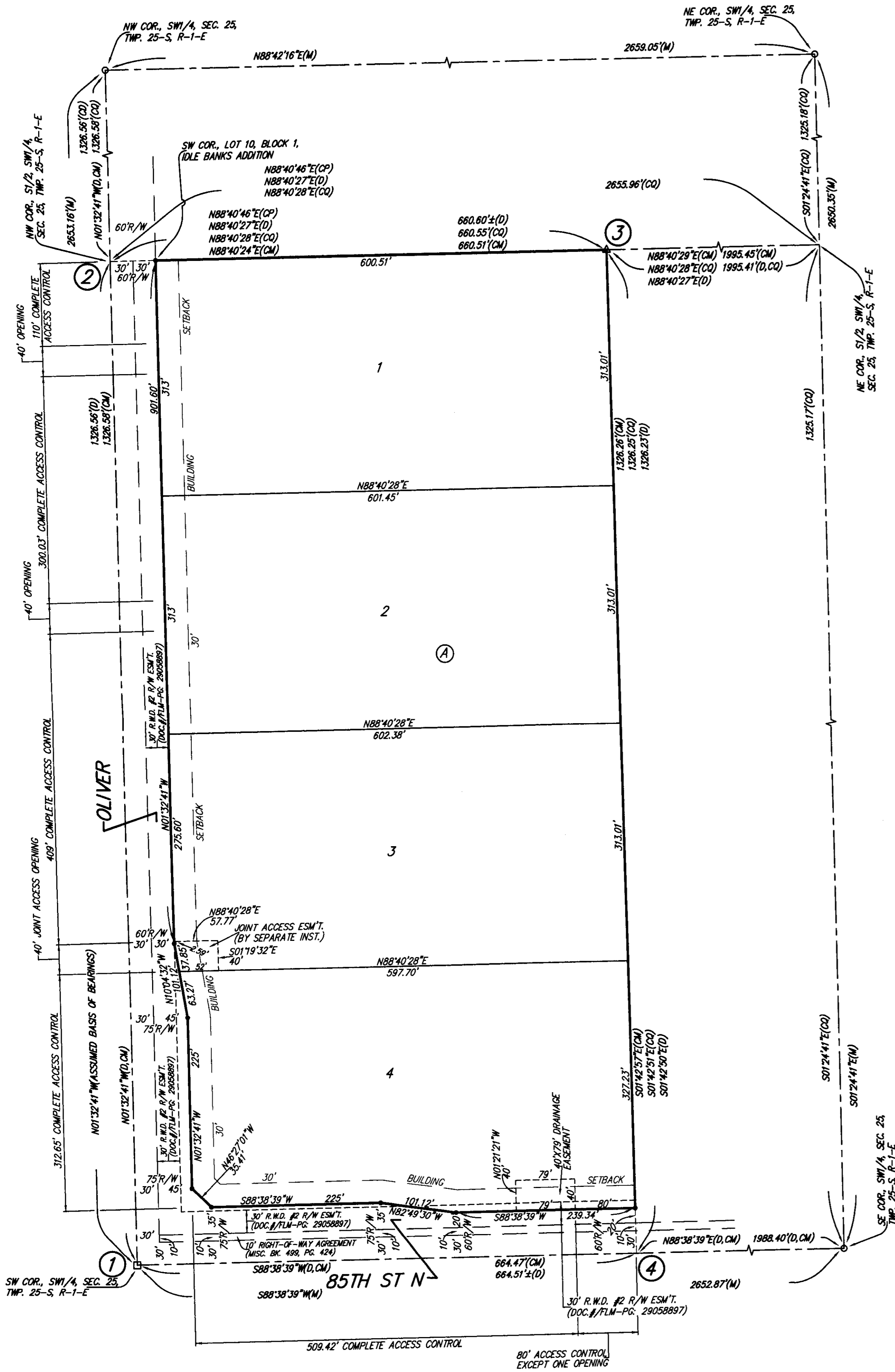


# PORTER ESTATES

## SEDGWICK COUNTY, KANSAS



• = #1 REBAR W/ "BAUGHMAN" CAP (SET)  
 □ = #9 REBAR (FOUND)  
 ○ = 3/4" IRON (FOUND)  
 △ = #4 REBAR W/ "TRAB" CAP (FOUND)

(M) = MEASURED  
 (D) = DESCRIBED  
 (CM) = CALCULATED PER MEASURED INFO.  
 (CD) = CALCULATED PER DESCRIBED INFO.  
 (CP) = CALCULATED PER PLATTED INFO.  
 (CQ) = CALCULATED PER SUBDIVISION OF QUARTER SECTION

State of Kansas) SS We, Baughman Company, P.A., Surveyors in aforesaid county and state do hereby certify that we have surveyed and platted "PORTER ESTATES", Sedgwick County, Kansas and that the accompanying plat is a true and correct exhibit of the property surveyed, described as follows: Commencing at the southeast corner of the Southwest Quarter of Section 25, Township 25 South, Range 1 East of the 6th P.M., Sedgwick County, Kansas; thence South 88°38'39" West for a distance of 1,988.40 feet on the south line of said Southwest Quarter to the point of beginning; thence South 88°38'39" West for a distance of 664.51 feet, more or less, to the southwest corner of said Southwest Quarter; thence North 01°32'41" West for a distance of 1,326.56 feet to the northwest corner of the South Half of said Southwest Quarter; thence North 88°40'27" East for a distance of 660.60 feet, more or less, to a point on the north line of the South Half of said Southwest Quarter being 1,995.41 feet west of the northeast corner of the South Half of said Southwest Quarter; thence South 01°42'50" East for a distance of 1,326.23 feet to the point of beginning, all being subject to road rights-of-way of record.

Existing public easements and dedications being vacated by virtue of K.S.A. 12-512b, as amended.  
Baughman Company, P.A.

\_\_\_\_\_, Surveyor  
Michael G. Conrey

Know all men by these presents that we, the undersigned, have caused the land in the surveyors certificate to be platted into Lots, a Block, and Streets, to be known as "PORTER ESTATES", Sedgwick County, Kansas. The drainage easement is hereby granted as indicated for drainage purposes. The streets are hereby dedicated to and for the use of the public. Access controls shall be as depicted on the face of the plat and are hereby granted to the appropriate governing body. The permitted opening locations shall be as determined by the Engineer for the appropriate governing body.

85th and Oliver, LLC,  
a Kansas limited liability company  
\_\_\_\_\_, Member  
Ross E. Hellwig

State of Kansas) SS The foregoing instrument acknowledged before me, this \_\_\_\_\_ day of \_\_\_\_\_, by Ross E. Hellwig, Member of the 85th & Oliver, LLC, a Kansas limited liability company, on behalf of the limited liability company.

\_\_\_\_\_, Notary Public  
My App't. Exp. \_\_\_\_\_

This plat of "PORTER ESTATES", Sedgwick County, Kansas has been submitted to and approved by the Wichita-Sedgwick County Metropolitan Area Planning Commission, Wichita, Kansas.  
Dated this \_\_\_\_\_ day of \_\_\_\_\_,  
Wichita-Sedgwick County Metropolitan Area Planning Commission

\_\_\_\_\_, Chair  
Don Klausmeyer  
\_\_\_\_\_, Secretary  
John L. Schlegel

This plat approved and all dedications shown hereon accepted by the Board of Commissioners of Sedgwick County, Kansas, this \_\_\_\_\_ day of \_\_\_\_\_.

\_\_\_\_\_, Chairman  
James B. Skelton, 5th District

ATTEST: \_\_\_\_\_, County Clerk  
Kelly B. Arnold

Reviewed in accordance with K.S.A. 58-2005 on this \_\_\_\_\_ day of \_\_\_\_\_.

Tricia L. Robello, L.S. #1246  
Deputy County Surveyor  
Sedgwick County, Kansas

Entered on transfer record this \_\_\_\_\_ day of \_\_\_\_\_.

\_\_\_\_\_, County Clerk  
Kelly B. Arnold

State of Kansas) SS This is to certify that this plat has been filed for record in the office of the Register of Deeds, this \_\_\_\_\_ day of \_\_\_\_\_, at \_\_\_\_\_ o'clock \_\_\_\_\_ M.; and is duly recorded.

\_\_\_\_\_, Register of Deeds  
Bill Meek

\_\_\_\_\_, Deputy  
Tonya Buckingham

NOTE: A drainage plan has been developed for this subdivision and is on file in the office of the County Engineer or the Engineer for the appropriate governing body. All drainage easements, right-of-ways, or reserves shall remain at established grades or as modified with the approval of the County Engineer or the Engineer for the appropriate governing body. No obstructions which impede the flow of this drainage system shall be allowed.