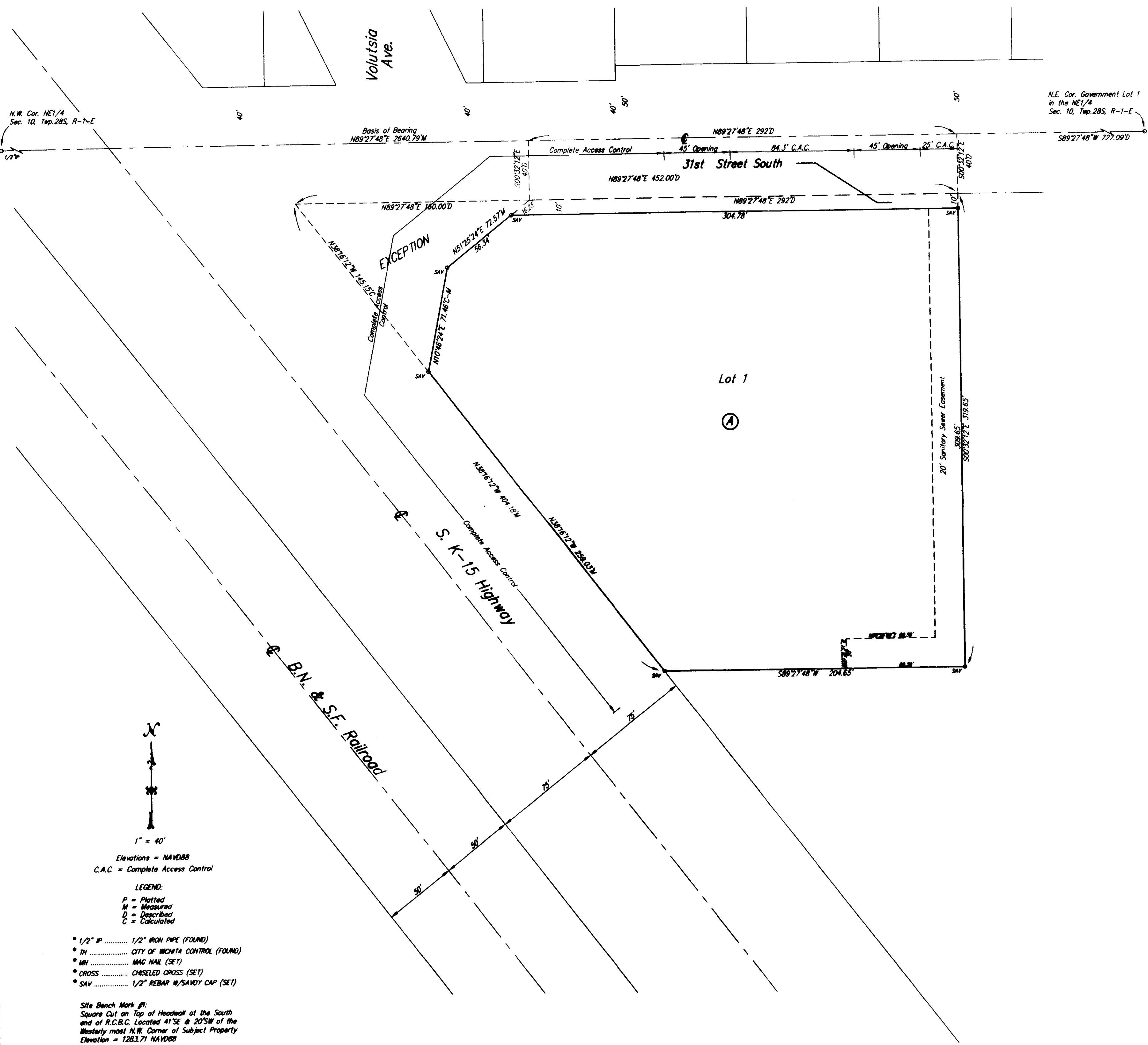


FINAL TRACING REC'D 11-19-13

# QUIKTRIP 14TH ADDITION

WICHITA, SEDGWICK COUNTY, KANSAS



State of Kansas) SS  
Sedgwick County)

We, Savoy Company, P.A., Surveyors in aforesaid county and state do hereby certify that, under the supervision of the undersigned, we have surveyed and platted "QUIKTRIP 14TH ADDITION" Wichita, Sedgwick County, Kansas and that the accompanying plat is a true and correct exhibit of the property surveyed, described as:

Part of Government Lot 1 in the Northeast Quarter of Section 10, Township 28 South, Range 1 East of the Sixth Principal Meridian, Sedgwick County, Kansas, described as Commencing at the N.E. Corner thereof; thence S89°27'48"W, along the North line of said NE1/4, 727.09 feet; thence S00°32'12"E, perpendicular to the North line of said NE1/4, 40 feet to South right-of-way line of 31st Street South for a point of beginning; thence continuing S00°32'12"E, 319.65 feet; thence S89°27'48"W, parallel with the North line of said NE1/4, 204.65 feet to a point on the East right-of-way line of Highway K-15; thence N38°16'12"W, along said East right-of-way line, 404.18 feet to a point 40 feet South of the North line of said NE1/4; thence N89°27'48"E, 452 feet to the point of beginning, Except that part deemed for street purposes recorded on Film 145 Page 190, Beginning at the intersection of the South right-of-way line of 31st Street South extended to the West and the Easterly right-of-way line of Highway K-15; thence N89°27'48"E, along said South line of extended 31st Street South, 160 feet; thence S51°25'24"W, 72.57 feet; thence S10°46'24"W, 71.46 feet to a point on the Easterly right-of-way line of Highway K-15; thence N38°16'12"W, along said Easterly right-of-way line, 145.15 feet to the point of beginning.

All Public easements and dedications being vacated by virtue of K.S.A. 12-512b.

Date 14 November 2013 Savoy Company, P.A.  
Mark A. Savoy RLS #788 Surveyor

Know all men by these presents that We, the undersigned, have caused the land described in the surveyor's certificate to be platted into a Lot, Block and Street to be known as "QUIKTRIP 14TH ADDITION" Wichita, Sedgwick County, Kansas. The Street is hereby dedicated to and for the use of the public. The Sanitary Sewer easement is hereby granted for the construction and maintenance of a sanitary sewer. A drainage plan has been developed for this plat and all drainage easements, rights-of-way, or reserves shall remain at established grades, or as modified with the approval of the City Engineer, and unobstructed to allow for the conveyance of stormwater. Access Control is hereby granted as shown on face of the Plat.

K&R RV Park LLC, a Kansas limited liability company  
Tim Zomermaand Member  
(Tax ID Number: 27-3398192)

State of Kansas) SS  
Sedgwick County)  
The foregoing instrument acknowledged before me, this 18<sup>th</sup> day of Nov 2013, by Tim Zomermaand (Tax ID Number: 27-3398192) a Member of K&R RV Park LLC, a Kansas limited liability company, on behalf of the company.

Linda S Hamby Notary Public  
My App't. Exp. 10/30/2015

This plat of "QUIKTRIP 14TH ADDITION", Wichita, Sedgwick County, Kansas, has been submitted to and approved by the Wichita-Sedgwick County Metropolitan Area Planning Commission, Wichita, Kansas.

Dated this \_\_\_\_\_ day of \_\_\_\_\_, 2013.  
Wichita-Sedgwick County Metropolitan Area Planning Commission

\_\_\_\_\_  
Don Klausmeyer Chair  
\_\_\_\_\_  
John L. Schlegel Secretary

This plat approved and all dedications shown hereon, accepted by the City Council of the City of Wichita, Kansas, this \_\_\_\_\_ day of \_\_\_\_\_, 2013.

\_\_\_\_\_  
Carl Brewer Mayor  
\_\_\_\_\_  
Karen Sublett City Clerk

Reviewed in accordance with K.S.A. 58-2005 on this \_\_\_\_\_ day of \_\_\_\_\_, 2013.

\_\_\_\_\_  
Tricia L. Robello, LS #1246 Deputy County Surveyor  
Sedgwick County Kansas

Entered on transfer record this \_\_\_\_\_ day of \_\_\_\_\_, 2013.

\_\_\_\_\_  
Kelly B. Arnold County Clerk

State of Kansas) SS  
Sedgwick County)

This is to certify that this plat has been filed for record in the office of the Register of Deeds, this \_\_\_\_\_ day of \_\_\_\_\_, 2013, at a'clock \_\_\_\_\_ M. and is duly recorded.

\_\_\_\_\_  
Bill Meek Register of Deeds

\_\_\_\_\_  
Tonya Buckingham Deputy

- 1" = 40'
- Elevations = NAVD88  
C.A.C. = Complete Access Control
- LEGEND:  
P = Platted  
M = Measured  
D = Described  
C = Calculated
- 1/2" IP ..... 1/2" IRON PIPE (FOUND)
  - TH ..... CITY OF WICHITA CONTROL (FOUND)
  - MN ..... MAG NAIL (SET)
  - CROSS ..... CHISELED CROSS (SET)
  - SAV ..... 1/2" REBAR W/SAVOY CAP (SET)
- Site Bench Mark #1:  
Square Cut on Top of Headwall of the South end of R.C.B.C. Located 41°SE & 20°SW of the Westerly most N.W. Corner of Subject Property Elevation = 1283.71 NAVD88
- Site Bench Mark #2:  
Square Cut on Top of Curb Located 40.5E & 2.3N of the N.E. Corner of Subject Property Elevation = 1283.65 NAVD88
- Site Bench Mark #3:  
Square Cut on N.W. Corner Concrete Pad for Mail Boxes Located 1.34W & 49E of the S.E. Corner of Subject Property Elevation = 1284.14 NAVD88