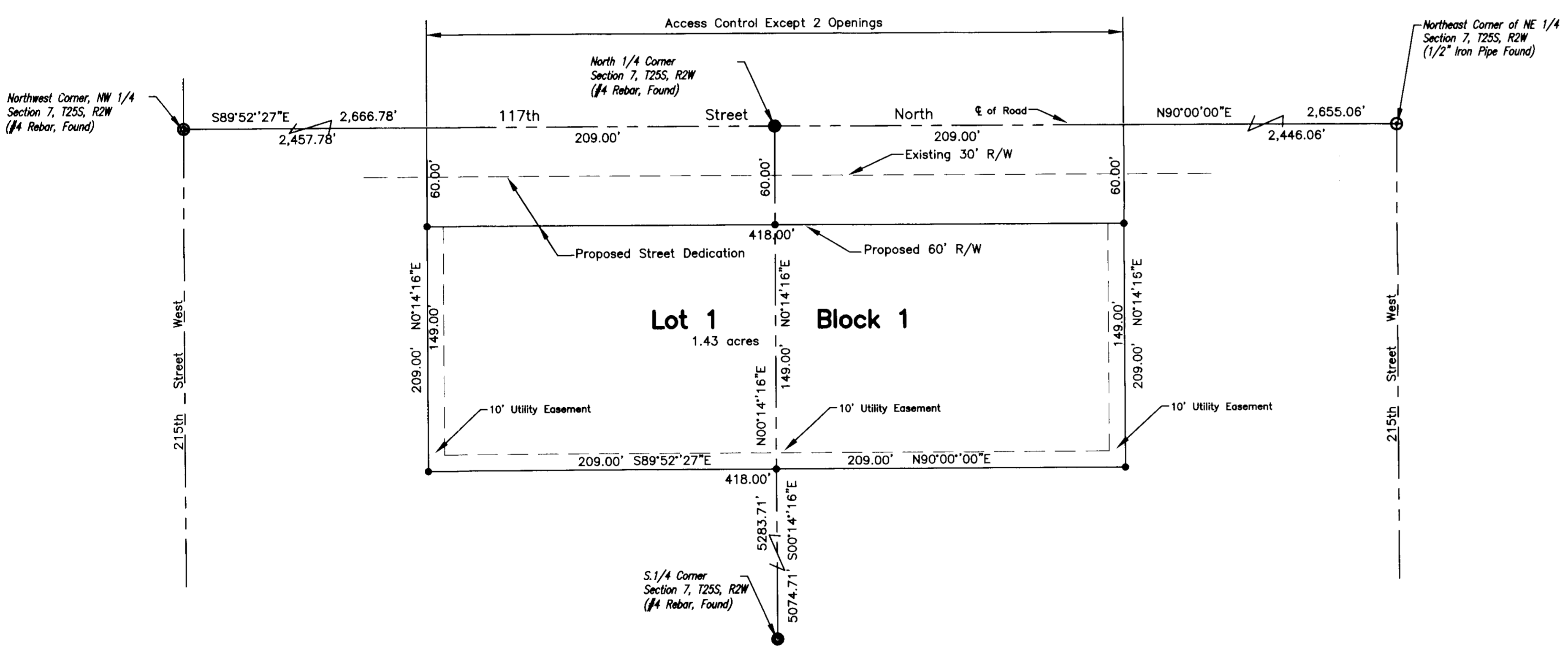
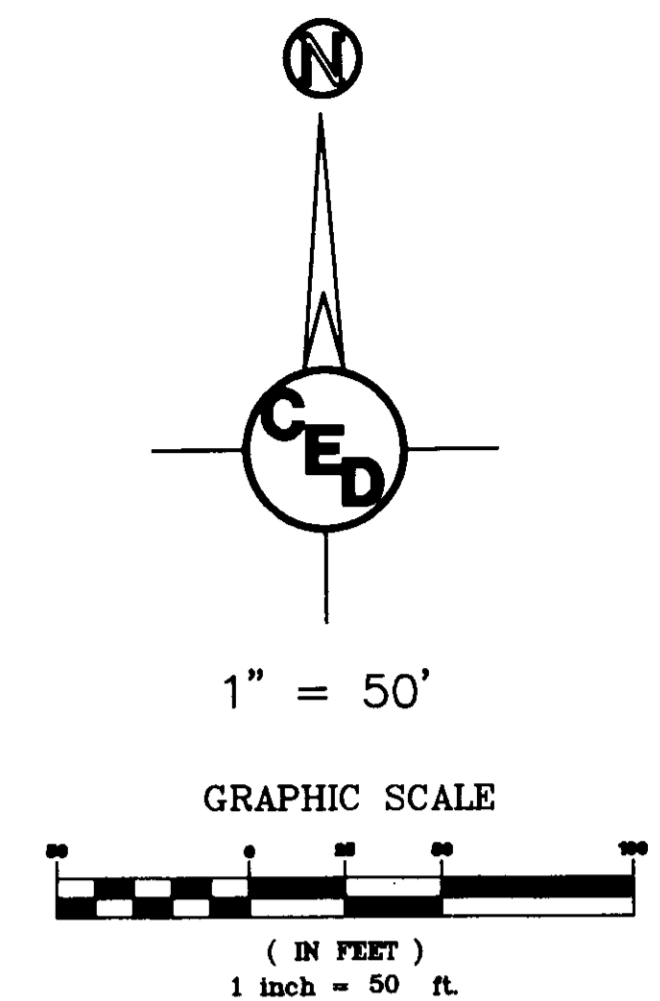


# "BETHANY BAPTIST 1ST ADDITION"

AN ADDITION TO SEDGWICK COUNTY, KANSAS  
 IN THE NW1/4 & NE1/4 OF SECTION 7, T25S, R2W  
 OF THE 6TH P.M.

- - 5/8" "Armstrong LS 780" capped rebar set
- ⊙ - 1/2" iron pipe found
- - #4 rebar found
- M - Measured distance
- P - Plat distance



State of Kansas) SS  
 Sedgwick County)

We, Armstrong Land Survey, P.A., Surveyors in aforesaid county and state do hereby certify that, under the supervision of the undersigned, we have surveyed and platted "BETHANY BAPTIST 1ST ADDITION", to Sedgwick County, Kansas and that the accompanying plat is a true and correct exhibit of the property surveyed, described as follows:

That part of the Northeast (NE1/4) quarter of Section 7, Township 25 South, Range 2 West of the 6th p.m., Sedgwick County, Kansas, described as beginning at the northwest corner thereof; thence N90°00'00"E along the north line of said NE1/4, 209 feet; thence S0°14'16"W, 209 feet; thence S90°00'00"W parallel with the north line of said Northeast Quarter, 209 feet to the west line of said NE1/4; thence N0°14'16"E along said the west line, 209 feet to the point of beginning.

along with:

That part of the Northwest (NW1/4) quarter of Section 7, Township 25 South, Range 2 West of the 6th p.m., Sedgwick County, Kansas, described as beginning at the Northeast corner of aforesaid Section; West on the North line of said Section, 209 feet; South parallel with the East line of said Section, 209 feet; East parallel with the North line of said Section, 209 feet; thence North on the East line of said Section to the beginning.

All Public easements and dedications being vacated by virtue of K.S.A. 12-512(b), as amended.

Date: 1-17-2014

Donald C. Armstrong, L.S. #780

Know all men by these presents that We, the undersigned, have caused the land described in the surveyors certificate to be surveyed and platted into a Lot, Block and Street to be known as "BETHANY BAPTIST 1ST ADDITION" to Sedgwick County, Kansas. The street is hereby dedicated to and for the use of the public. Access controls are hereby granted to the appropriate governing body as indicated on the face of the plat. A drainage plan has been developed for this plat and all drainage easements and rights-of-way shall remain at established grades or modified with the approval of the Engineer of the appropriate governing body, and unobstructed to allow for the conveyance of stormwater. Utility Easements are hereby granted as indicated for the construction and maintenance of all public utilities.

Larry Orger  
 Larry Orger, Pastor  
 Bethany Baptist Church

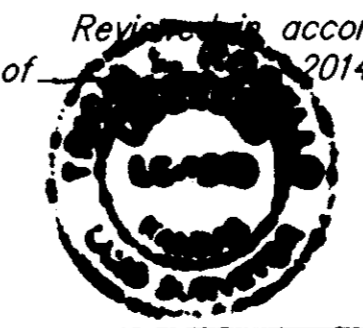
State of Kansas) SS  
 Sedgwick County)

The foregoing instrument acknowledged before me, this 22 day of January, 2014, by Brenda Spence.

My App't. Exp 10-17-2015

Brenda Spence Notary Public

Reviewed in accordance with K.S.A. 58-2005 on this day of 2014.



Deputy County Surveyor  
 Sedgwick County, Kansas  
 Tricia L. Robello, L.S. #1246

This plat of "BETHANY BAPTIST 1ST ADDITION", to Sedgwick County, Kansas, has been submitted to and approved by the Wichita-Sedgwick County Metropolitan Area Planning Commission, Wichita, Kansas. Dated this \_\_\_\_ day of \_\_\_\_\_, 2014.

Wichita-Sedgwick County Metropolitan Area Planning Commission

\_\_\_\_\_  
 Don Klausmeyer Chairman  
 \_\_\_\_\_  
 John L. Schlegel Secretary

This plat approved and all dedications shown hereon, are hereby accepted by the Board of County Commissioners, Sedgwick County, Kansas, this day \_\_\_\_ of \_\_\_\_\_, 2014.

\_\_\_\_\_  
 David M. Unruh Chairman  
 \_\_\_\_\_  
 Kelly B. Arnold County Clerk

Entered on transfer record this \_\_\_\_ day of \_\_\_\_\_, 2014.

\_\_\_\_\_  
 Kelly B. Arnold County Clerk

State of Kansas) SS  
 Sedgwick County)

This is to certify that this plat has been filed for record in the office of the Register of Deeds, this \_\_\_\_ day of \_\_\_\_\_, 2014, at \_\_\_\_ o'clock \_\_\_\_ M. and is duly recorded.

\_\_\_\_\_  
 Bill Meek Register of Deeds  
 \_\_\_\_\_  
 Tonya Buckingham Deputy

BENCHMARK:  
 BM = Northwest corner of RCBC 52.8' E. & 62.6' N of the N.E. corner, NE1/4, S.7, T.25S., R.2W.  
 Elev. = 1331.18 NGVD

Closure Computation  
 Error of Closure=0.000001'  
 Accuracy 1:1,254,000.00