

PASSIVHAUS ADDITION

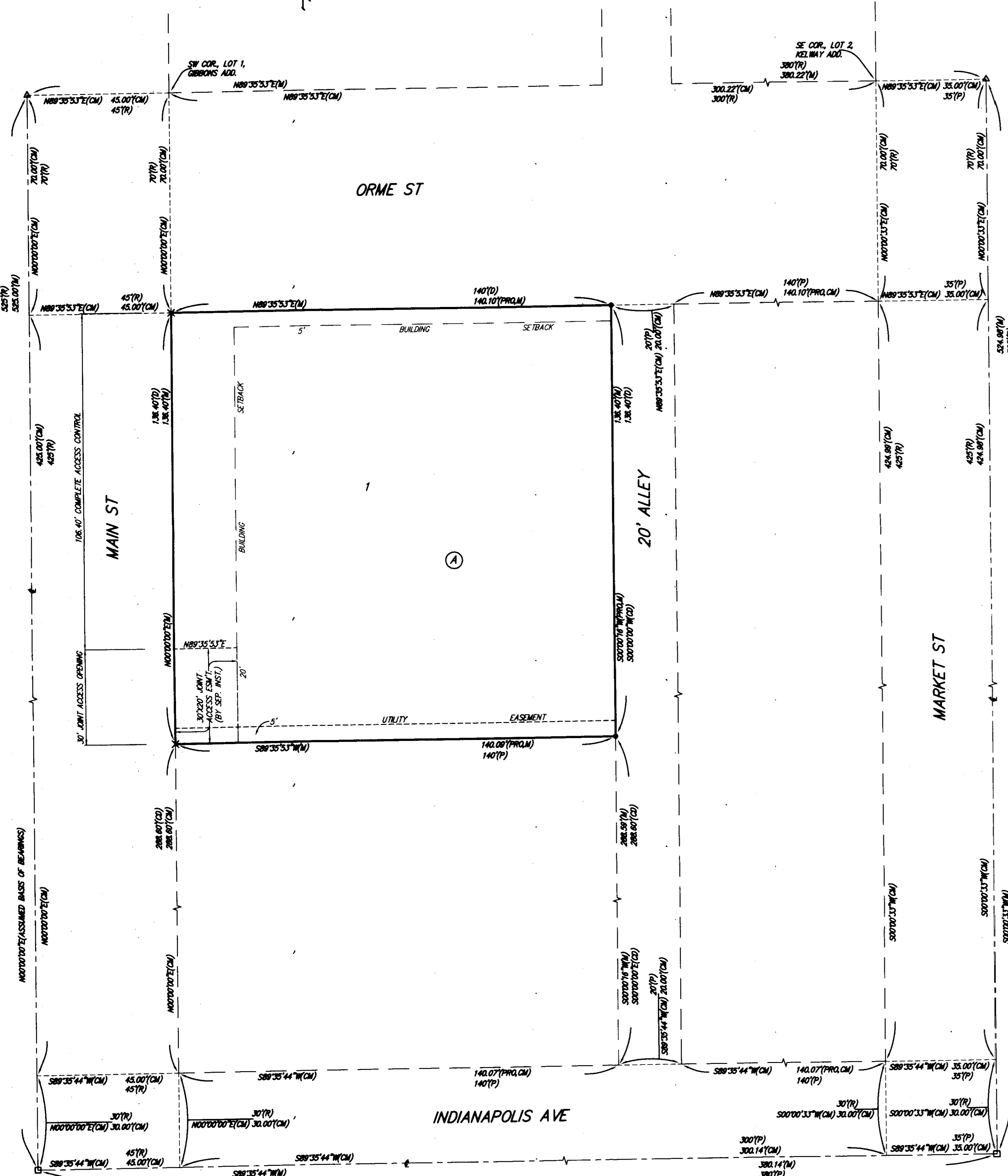
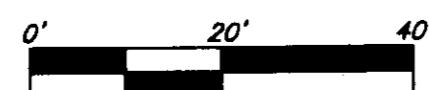
WICHITA, SEDGWICK COUNTY, KANSAS

FILE COPY

REVISED
FINAL TRACING REC'D 2-18-14

SUB2013-33

- = #4 BAUGHMAN REBAR (SET)
 - ✕ = CHISELED "X" (SET)
 - = 1-1/4" IRON PIPE IN THIMBLE (FOUND)
 - = MAG NAIL IN 1-1/4" IRON PIPE IN THIMBLE (FOUND)
- (M) = MEASURED
(P) = PLATTED
(D) = DESCRIBED
(PRO) = PROPOSED
(R) = RECORD MEASUREMENT
(CM) = CALCULATED PER MEASURED INFO.



State of Kansas) SS We, Baughman Company, P.A., Surveyors in
Sedgwick County) do hereby certify that we have surveyed and
platted "PASSIVHAUS ADDITION," Wichita, Sedgwick County, Kansas and that
the accompanying plat is a true and correct exhibit of the property
surveyed, described as beginning 580 feet south and 700 feet west of the
northeast corner of the Northeast Quarter of Section 29, Township 27
South, Range 1 East of the 6th P.M., Sedgwick County, Kansas; thence
east 140 feet; thence south 136.4 feet; thence west 140 feet; thence
north 136.4 feet to the point of beginning.

Existing public easements and dedications being
vacated by virtue of K.S.A. 12-512b, as amended.
Baughman Company, P.A.

Michael G. Conrey, Surveyor
Michael G. Conrey
LS-071
KANSAS SURVEYORS AND PLATTERS
2014

This plat of "PASSIVHAUS ADDITION," Wichita,
Sedgwick County, Kansas has been submitted to and approved by the
Wichita-Sedgwick County Metropolitan Area Planning Commission, Wichita,
Kansas.

Dated this _____ day of _____,
Wichita-Sedgwick County Metropolitan Area Planning Commission

Don Klausmeyer, Chair

John L. Schlegel, Secretary

This plat approved and all dedications shown
hereon accepted by the City Council of the City of Wichita, Kansas,
this _____ day of _____.

Carl Brewer, Mayor

Karen Sublett, City Clerk

Know all men by these presents that we,
the undersigned, have caused the land in the surveyors certificate to be
platted into a Lot and a Block, to be known as "PASSIVHAUS ADDITION,"
Wichita, Sedgwick County, Kansas. The utility easement is hereby granted
as indicated for the construction and maintenance of all public utilities.
Access controls shall be as depicted on the face of the plat and are
hereby granted to the City of Wichita, Kansas. The permitted opening
locations shall be as determined by the City Engineer of the City of
Wichita, Kansas.

W. W. Garvey Trust Number Two,
dated December 28, 1976

Michael H. Garvey, Trustee
Michael H. Garvey

Reviewed in accordance with K.S.A. 58-2005
on this _____ day of _____, 2014.

Tricia L. Robello, L.S. #1246
Deputy County Surveyor
Sedgwick County, Kansas

State of Kansas) SS The foregoing instrument acknowledged before
Sedgwick County) me, this 14th day of February, 2014, by Michael H. Garvey, Trustee
of the W. W. Garvey Trust Number Two, dated December 28, 1976, on
behalf of the trust.

JUDITH M. TERHUNE
Notary Public - State of Kansas
My App'l Expires 11-7-17

My App'l Exp. 11-7-17

Judith M. Terhune, Notary Public
JUDITH M. TERHUNE

Entered on transfer record this _____ day
of _____, 2014.

Kelly B. Arnold, County Clerk

State of Kansas) SS This is to certify that this plat has been
Sedgwick County) filed for record in the office of the Register of Deeds, this _____ day
of _____, 2014 at _____ o'clock _____ M; and is duly recorded.

Bill Meek, Register of Deeds

Tonya Buckingham, Deputy

NOTE: A DRAINAGE PLAN HAS BEEN DEVELOPED FOR THIS SUBDIVISION AND IS ON FILE WITH THE CITY OF WICHITA, KANSAS. DRAINAGE INTENT SHALL REMAIN AS DEPICTED OR AS MODIFIED WITH THE APPROVAL OF THE CITY ENGINEER OF THE CITY OF WICHITA, KANSAS. NO OBSTRUCTIONS WHICH IMPEDE THE FLOW OF THIS DRAINAGE PLAN SHALL BE ALLOWED.