

FILE COPY suB2012-43
 FINAL TRACING REC'D 2.25.14

FINAL PLAT

OAKLAWN ELEMENTARY ADDITION

E 1/2, OF THE NW 1/4 OF SEC. 23, TWP. 28 S RANGE 1 E
 AN ADDITION TO, SEDGWICK COUNTY, KANSAS

This is to certify that the undersigned owner(s) of the land described in the Surveyor's Certificate; have caused the same to be surveyed and subdivided on the accompanying plat into a Lot, a Block and a Reserve under the name of "Oaklawn Elementary Addition", (an addition to Sedgwick County, Kansas); that all easements as denoted on the plat are hereby dedicated to and for the use of the public for the purpose of constructing, operating, maintaining, and repairing public improvements. Access controls as denoted on the plat are hereby dedicated. Reserve "A" is hereby reserved for open spaces, entry monuments, drainage basins, landscaping, berms, irrigation, lighting, signage, drainage purposes, storm sewers, recreation purposes, and utilities confined to easements. Reserve "A" shall be owned and maintained by the property owner(s) of the addition, its successors and assigns. Further the undersigned owner(s) certify that the land contained herein is held and shall be conveyed subject to any applicable restrictions, reservations, and covenants now on file or hereafter filed in the Office of the Register of Deeds of Sedgwick County, Kansas.

A drainage plan has been developed for the subdivision and all drainage easements, rights of way, or reserves shall remain at the established grades and remain unobstructed to allow for the conveyance of stormwater.

Derby Unified School District, No. 260 Board of Education

Andre Sisco
 By: Andre Sisco
 President of USD 260 Board of Education
 Date: 2-24-14

STATE OF KANSAS)
) SS
 COUNTY OF SEDGWICK)

This instrument was acknowledged before me, this 24th day of February, 2014, by Andre Sisco, President on behalf of USD 260 Board of Education.

Notary Public
 My appointment expires: 10-9-2016

This plat of "Oaklawn Elementary Addition" has been submitted to and approved by the Wichita-Sedgwick County Metropolitan Area Planning Commission, Wichita, Kansas.

Dated this _____ day of _____, 20____
 Wichita Sedgwick County Metropolitan Area Planning Commission

_____, Chair
 David Dennis, Chair
 Attest:
 _____, Secretary
 John L. Schlegel, Secretary

This plat approved and all dedications shown hereon, if any, accepted by the Board of County Commissioners of Sedgwick County, Kansas.
 Dated this _____ day of _____, 20____.

_____, Chairman
 James B. Skelton, 5th District
 Attest:
 _____, County Clerk
 Kelly B. Arnold, County Clerk

This plat approved and all dedications shown hereon, if any, accepted by the governing body of the City of Wichita, Kansas.

Dated this _____ day of _____, 20____.
 At the direction of the City Council.

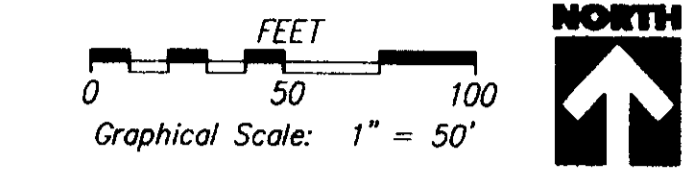
_____, Mayor
 Carl Brewer, Mayor
 Attest:
 _____, City Clerk
 Karen Sublett, City Clerk

STATE OF KANSAS, SEDGWICK COUNTY)ss
 This is to certify that this instrument was filed for record in the Register of Deeds Office, at _____ a.m. - p.m., on the _____ day of _____, 20____.

_____, Register of Deeds
 Bill Meek, Register of Deeds
 Attest:
 _____, Deputy
 Tanya E. Buckingham, Deputy

STATE OF KANSAS, SEDGWICK COUNTY)ss
 Reviewed in accordance with K.S.A. 58-2005 on this _____ day of _____, 20____.

_____, Deputy County Surveyor
 Tricia L. Robello, LS #1246
 Deputy County Surveyor
 Sedgwick County, Kansas



Preparation Date: February 21, 2014

- LEGEND:**
- △ = Iron Pipe Found
 - = 1/2" Rebar Found w/Cap, "LS 1200"
 - ⊙ = 1/2" Rebar Found w/Cap, "Moehring"
 - ⊗ = Set 1/2" Rebar, capped "LS 1200"
 - (M) = Measured
 - (D) = Deeded Measurement
 - (CM) = Calculated from Measurements

BENCHMARK:
 BM #1 - City of Wichita Benchmark, located on the northwest corner of concrete box for school crossing signal, on the south side of 47th Street S at Clifton Street. (Not shown, outside of survey limits.)
 Elev.=1270.25 NAVD 88

BM #2 (TBM) - Chisled "□" (set), at the West end of hubguard on the south side of southern most driveway into Oaklawn Elementary.
 Elev.=1270.92 NAVD 88

I, the undersigned, a registered land surveyor of the State of Kansas, do hereby certify that the following described tract of land was surveyed on August 21, 2012 and the accompanying final plat prepared and that all the monuments shown herein actually exist and their positions are correctly shown to the best of my knowledge and belief:

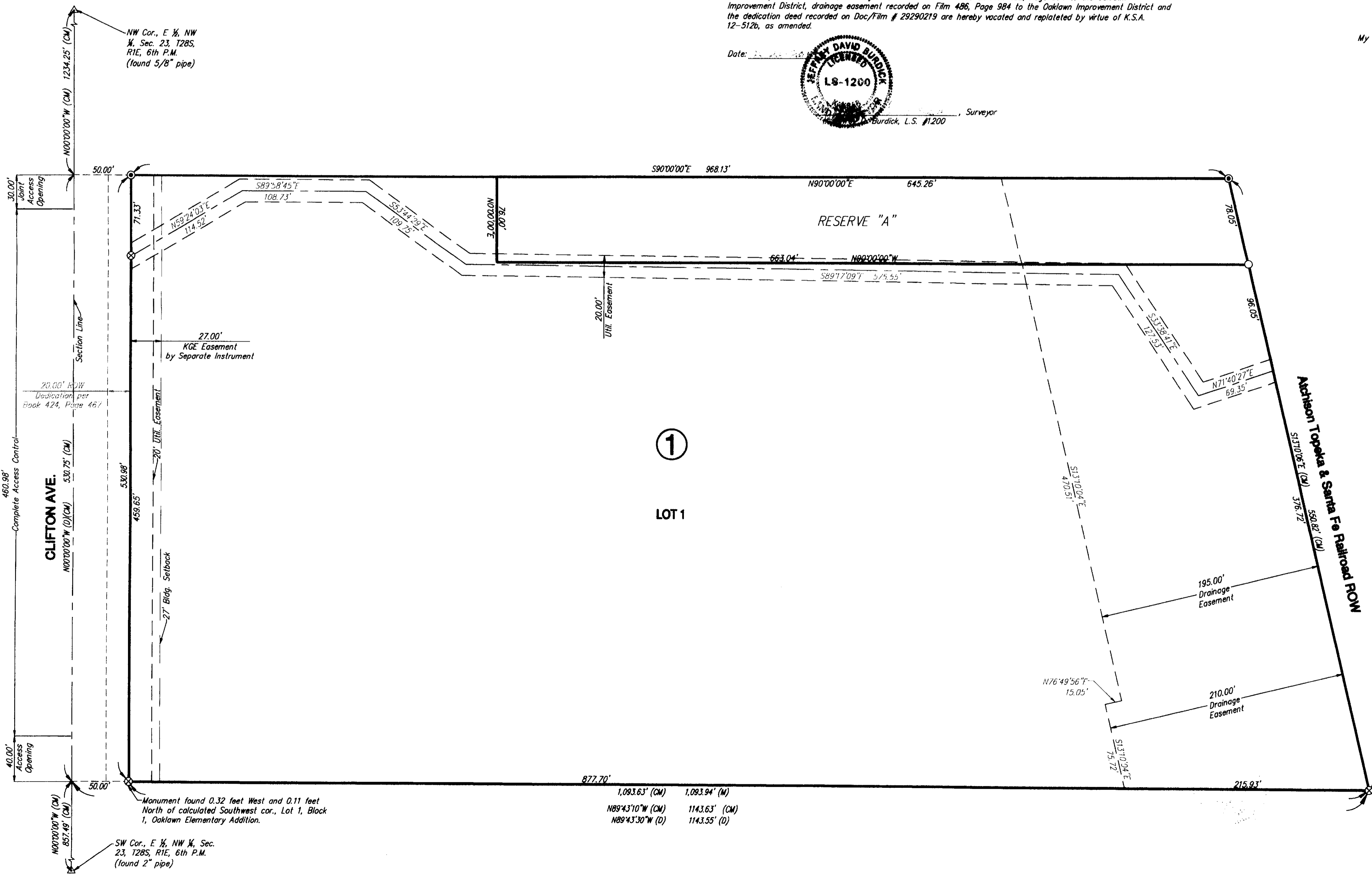
Located in the East Half (E 1/2), of the Northwest Quarter (NW 1/4) of Section 23, Township 28 South, Range 1 East of the 6th P.M., Sedgwick County, Kansas, more particularly described as follows:

Commencing at the Northwest Corner (NW Cor.) of the East Half (E 1/2) of the Northwest Quarter (NW 1/4) of Section 23, Township 28 South, Range 1 East, of the 6th P.M., then South 00°00'00" West along the West line of said East Half, a distance of 1,234.25 feet; thence South 90°00'00" East a distance of 50.00 feet to the Point of Beginning; thence continuing South 90°00'00" East a distance of 968.13 feet; thence South 131°00'00" East a distance of 550.82 feet; thence North 89°43'10" West a distance of 1,093.63 feet; thence North 00°00'00" West a distance of 530.98 feet to the Point of Beginning.

The plat contains 12.63 acres, more or less.

Existing public easements and dedications, including the drainage easement recorded on Film 480, Page 823 to the Oaklawn Improvement District, sanitary sewer easement recorded on Film 482, Page 374 to the Oaklawn Improvement District, drainage easement recorded on Film 486, Page 984 to the Oaklawn Improvement District and the dedication deed recorded on Doc/Film # 29290219 are hereby vacated and repealed by virtue of K.S.A. 12-512b, as amended.

Date: _____
 _____, Surveyor
 (Seal: DAVID BURDICK, L.S. #1200)



①
 LOT 1

1,093.63' (CM)	1,093.94' (M)
N89°43'10" W (CM)	1143.63' (CM)
N89°43'30" W (D)	1143.55' (D)