

FINAL TRACING REC'D 4.1.14

FILE COPY SUB2014-03

# 47TH AND WEBB ADDITION Sedgwick County, Kansas

This plat of "47TH AND WEBB ADDITION", Sedgwick County, Kansas has been submitted to and approved by the Wichita-Sedgwick County Metropolitan Area Planning Commission, Wichita, Kansas. Dated this \_\_\_\_\_ day of \_\_\_\_\_, 2014.

Wichita-Sedgwick County Metropolitan Area Planning Commission

\_\_\_\_\_  
Chair  
Don Klausmeyer

\_\_\_\_\_  
Secretary  
John L. Schlegel

This plat approved and all dedications shown hereon, accepted by the City Council of the City of Wichita, Kansas, this \_\_\_\_\_ day of \_\_\_\_\_, 2014.

\_\_\_\_\_  
Mayor  
Carl Brewer

\_\_\_\_\_  
City Clerk  
Karen Sublett

This plat approved and all dedications shown hereon, are hereby accepted by the Board of County Commissioners, Sedgwick County, Kansas, this \_\_\_\_\_ day of \_\_\_\_\_, 2014.

\_\_\_\_\_  
Chairman  
David M. Unruh, First District

\_\_\_\_\_  
County Clerk  
Kelly Arnold

Reviewed in accordance with K.S.A. 58-2005 on this \_\_\_\_\_ day of \_\_\_\_\_, 2014.

\_\_\_\_\_  
Deputy County Surveyor  
Sedgwick County, Kansas  
Tricia L. Robello, L.S. #1246

Entered on transfer record this \_\_\_\_\_ day of \_\_\_\_\_, 2014.

\_\_\_\_\_  
County Clerk  
Kelly Arnold

State of Kansas) SS  
Sedgwick County)

This is to certify that this plat has been filed for record in the office of the Register of Deeds, this \_\_\_\_\_ day of \_\_\_\_\_, 2014, at \_\_\_\_\_ o'clock \_\_\_\_\_ M. and is duly recorded.

\_\_\_\_\_  
Register of Deeds  
BRI Meek

\_\_\_\_\_  
Deputy  
Tonya Buckingham

State of Kansas) SS  
Sedgwick County)

We, Savoy Company, P.A., Surveyors in aforesaid county and state do hereby certify that, under the supervision of the undersigned, we have surveyed and platted "47TH AND WEBB ADDITION", Sedgwick County, Kansas and that the accompanying plat is a true and correct exhibit of the property surveyed, described as follows:

That part of the NE1/4 of Sec. 20, Twp. 28-S, R-2-E of the 6th P.M., Sedgwick County, Kansas described as beginning at the S.E. Corner thereof; thence N01°23'52"W, along the east line of said NE1/4, 466.95 feet; thence S89°00'58"W, parallel with the south line of said NE1/4, 526.95 feet; thence S01°23'52"E, parallel with the east line of said NE1/4, 466.95 feet to the south line of said NE1/4; thence N89°00'58"E, along the south line of said NE1/4, 526.95 feet to the point of beginning.

All Public easements and dedications being vacated by virtue of K.S.A. 12-512(b) as amended.

Savoy Company, P.A.

Date: 12 March 2014

\_\_\_\_\_  
Surveyor  
Mark A. Savoy/PS #788

Know all men by these presents that we, the undersigned, have caused the land described in the surveyors certificate to be platted into a Lot, Block and Street to be known as "47TH AND WEBB ADDITION", Sedgwick County, Kansas. The street is hereby dedicated to and for the use of the public. The Utility and Drainage easements are hereby granted for the construction and maintenance of all public utilities and for drainage purposes. A drainage plan has been developed for this plot and all drainage easements and rights-of-way shall remain at established grades or modified with the approval of the Engineer of the appropriate governing body, and unobstructed to allow for the conveyance of stormwater. Access control is hereby granted as indicated on the face of the plat.

Kansas Gas and Electric Company, a Kansas corporation  
By: Westar Energy, Inc.

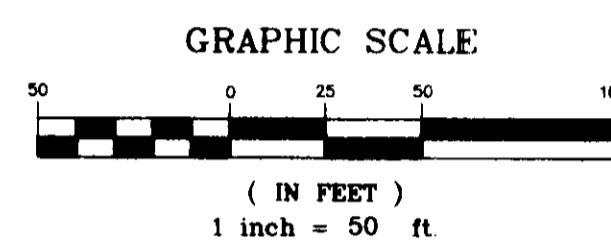
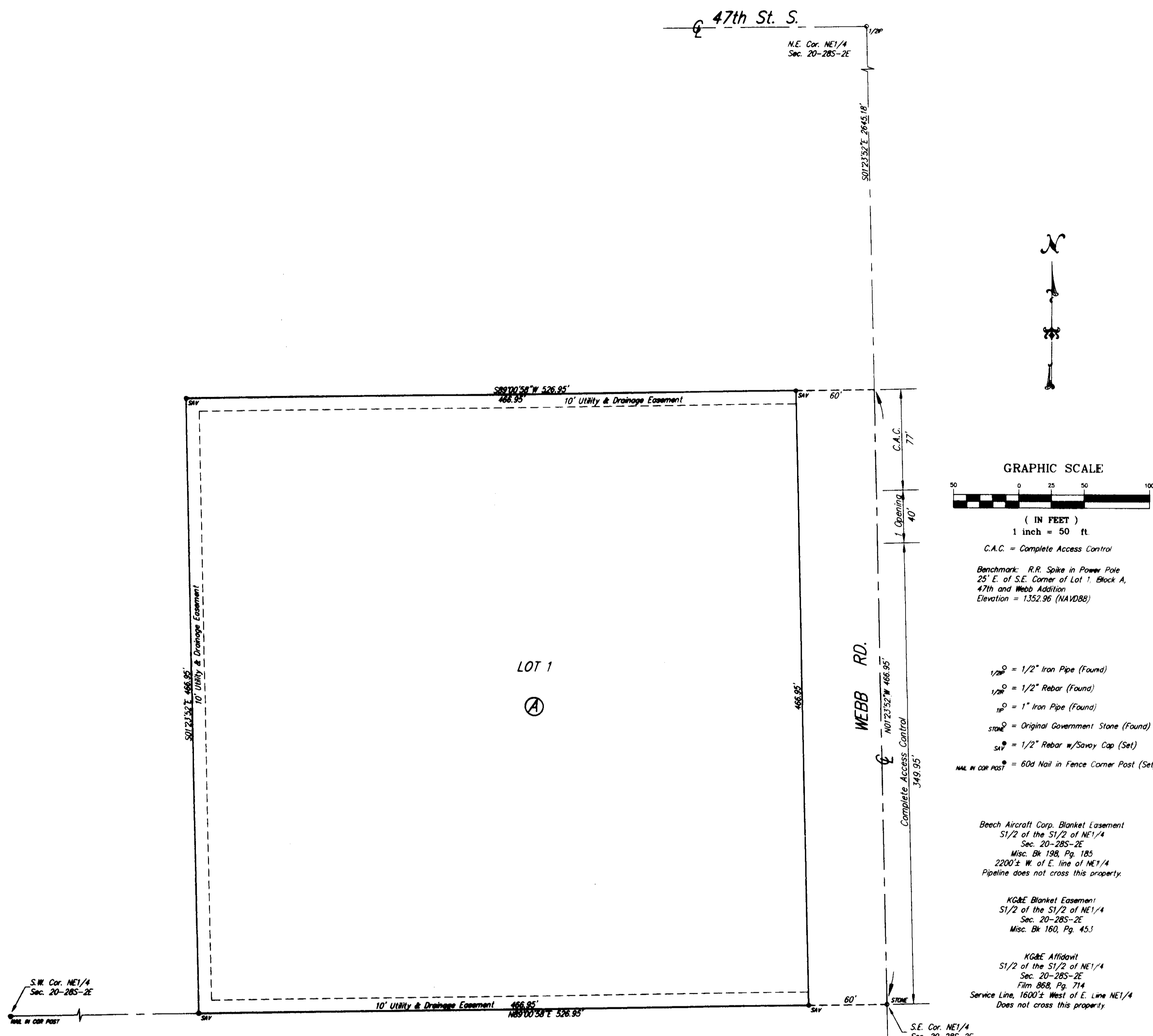
By: \_\_\_\_\_  
David Benak, Director, T&S Construction Services

State of Kansas) SS  
Shawnee County)

The foregoing instrument acknowledged before me, this \_\_\_\_\_ day of \_\_\_\_\_, 2014, by David Benak, Director, T&S Construction Services, Westar Energy, Inc., for Kansas Gas and Electric Company, a Kansas corporation, on behalf of the corporation.

My App't. Exp. \_\_\_\_\_  
\_\_\_\_\_  
Notary Public

NOTARY PUBLIC - State of Kansas  
ERIN QUINTANILLA  
My Appl. Expires 4/3/14



- 1/2" = 1/2" Iron Pipe (Found)
- 1/2" = 1/2" Rebar (Found)
- 1" = 1" Iron Pipe (Found)
- stone = Original Government Stone (Found)
- cap = 1/2" Rebar w/Savoy Cap (Set)
- NAI w/ COR POST = 60d Nail in Fence Corner Post (Set)

Beech Aircraft Corp. Blanket Easement  
S1/2 of the S1/2 of NE1/4  
Sec. 20-285-2E  
Misc. Bk 198, Pg. 185  
2200± W. of E. line of NE1/4  
Pipeline does not cross this property.

KG&E Blanket Easement  
S1/2 of the S1/2 of NE1/4  
Sec. 20-285-2E  
Misc. Bk 160, Pg. 45.1

KG&E Affidavit  
S1/2 of the S1/2 of NE1/4  
Sec. 20-285-2E  
Film 868, Pg. 714  
Service Line, 1600± West of E. Line NE1/4  
Does not cross this property.

