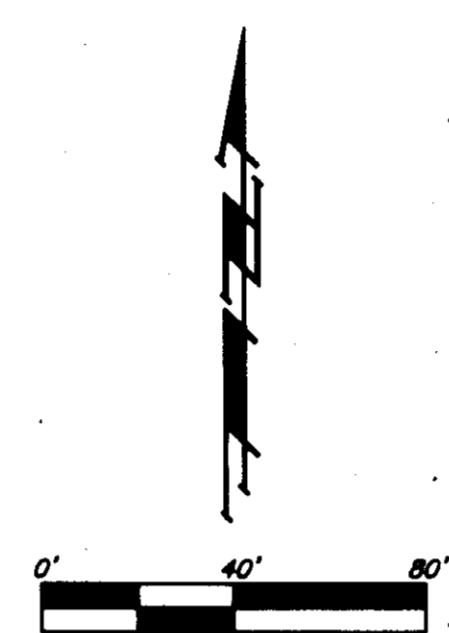
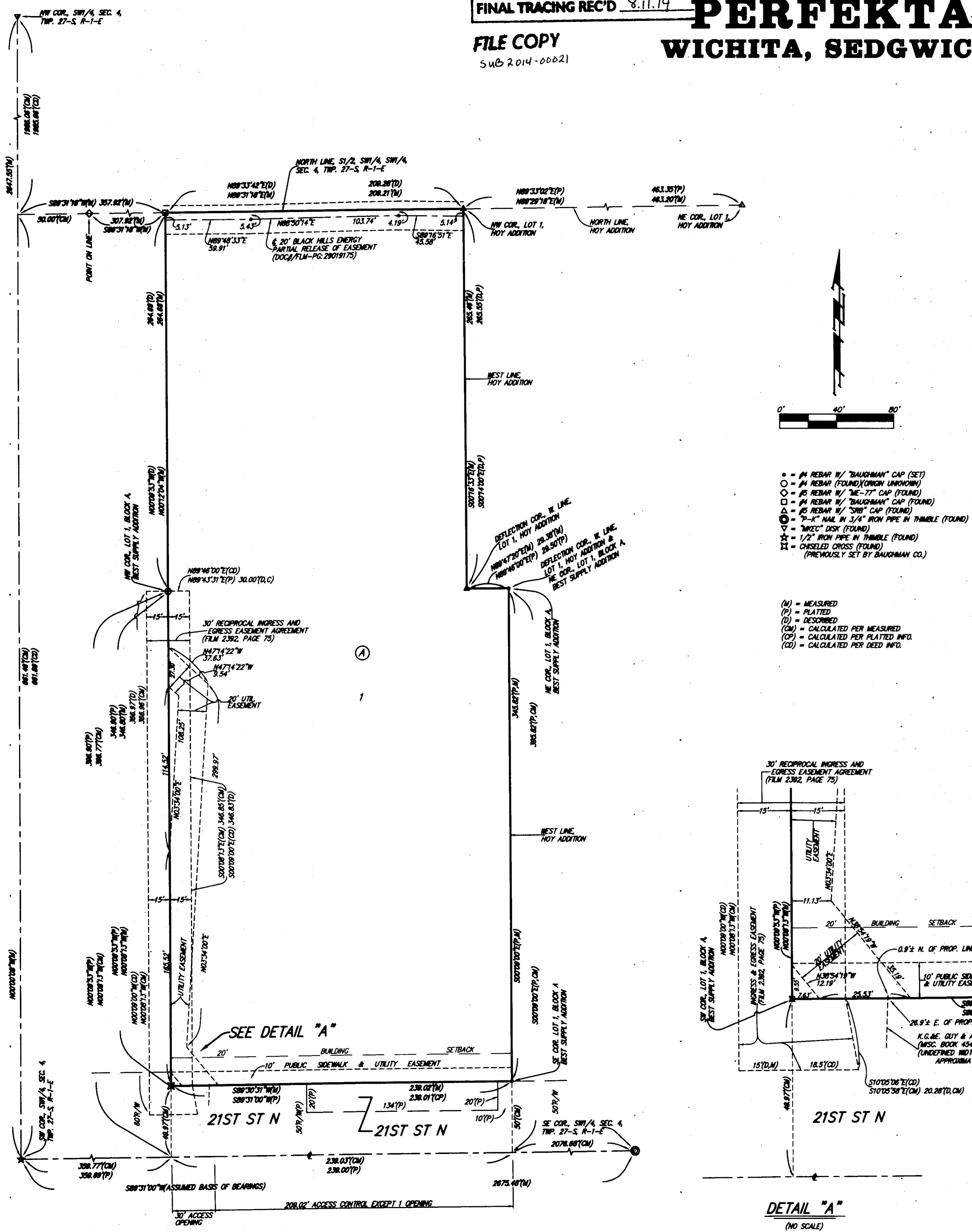


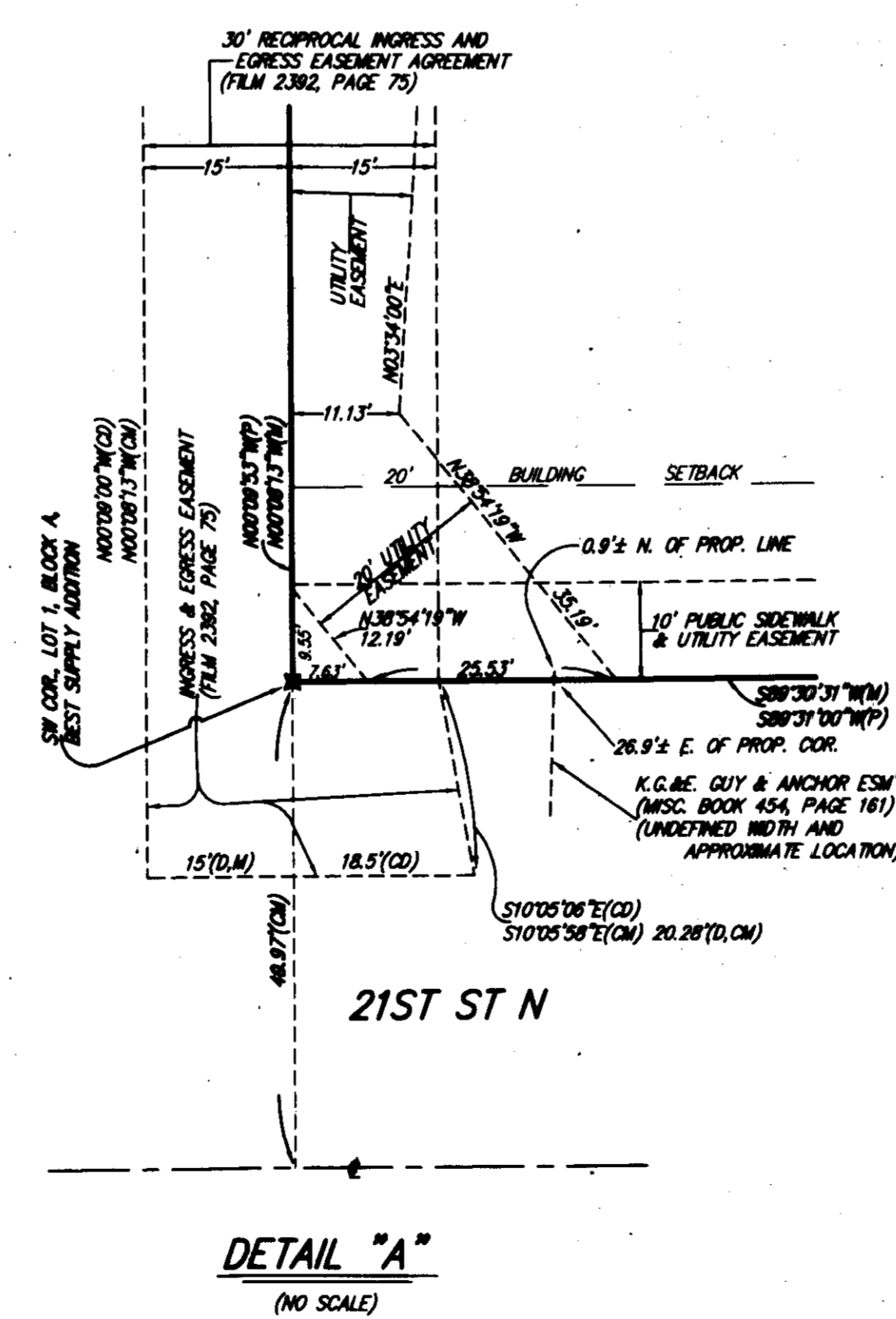
PERFEKTA ADDITION WICHITA, SEDGWICK COUNTY, KANSAS

FILE COPY
SUB 2014-00021



- = #4 REBAR W/ "BAUGHMAN" CAP (SET)
- = #4 REBAR (FOUND) (CONCRETE UNEXPOSED)
- = #4 REBAR W/ "ME-77" CAP (FOUND)
- = #4 REBAR W/ "BAUGHMAN" CAP (FOUND)
- = #4 REBAR W/ "SIB" CAP (FOUND)
- △ = "P-K" NAIL IN 3/4" IRON PIPE IN THIMBLE (FOUND)
- △ = "MREC" DISK (FOUND)
- △ = 1/2" IRON PIPE IN THIMBLE (FOUND)
- △ = CHISELED CROSS (FOUND)
- △ = (PREVIOUSLY SET BY BAUGHMAN CO.)

- (M) = MEASURED
- (P) = PLATTED
- (D) = DESCRIBED
- (CM) = CALCULATED PER MEASURED
- (CP) = CALCULATED PER PLATTED INFO
- (CD) = CALCULATED PER DEED INFO



State of Kansas) SS We, Baughman Company, P.A., Surveyors in
Sedgwick County) the aforesaid county and state do hereby certify that we have surveyed and
platted "PERFEKTA ADDITION", Wichita, Sedgwick County, Kansas and that
the accompanying plat is a true and correct exhibit of the property
surveyed, described as and being a replat of all of Lot 1, Block A, Best
Supply Addition, Wichita, Sedgwick County, Kansas, TOGETHER with the
following described tract: A tract in the South Half of the Southwest
Quarter of the Southwest Quarter of Section 4, Township 27 South, Range
1 East of the Sixth Principal Meridian, Sedgwick County, Kansas described
as follows: Beginning at the northwest corner of Lot 1, Block A, Best
Supply Addition, Wichita, Sedgwick County, Kansas, thence N00°09'53"W
along the extended west line of Lot 1, Block A, in said Best Supply
Addition, 264.69 feet to a point on the north line of said South Half;
thence N89°33'42"E along said north line, 209.28 feet to the northwest
corner of Lot 1, Hoy Addition, Wichita, Kansas, Sedgwick County, Kansas;
thence S00°14'00"E along the west line of Lot 1 in said Hoy Addition,
263.55 feet to a deflection corner in the north line of Lot 1, Block A, in
said Best Supply Addition; thence S89°43'31"W along the north line of Lot
1, in said Block A, 209.51 feet to the point of beginning.

Existing public easements, dedications, building
setback lines, and access controls, if any, being
vacated by virtue of K.S.A. 12-512b, as amended.

Baughman Company, P.A.

Michael G. Conroy, Surveyor
Michael G. Conroy

Know all men by these presents that we,
the undersigned, have caused the land in the surveyors certificate to be
platted into a Lot, a Block, and a Street, to be known as "PERFEKTA
ADDITION", Wichita, Sedgwick County, Kansas. The utility easement is
hereby granted as indicated for the construction and maintenance of all
public utilities. The public sidewalk and utility easement is hereby granted
as indicated for construction and maintenance of a public sidewalk and for
the construction and maintenance of all public utilities. The street is
hereby dedicated to and for the use of the public. Access controls shall
be as depicted on the face of the plat and are hereby granted to the
City of Wichita, Kansas.

Perfekta, Inc., a Kansas corporation
Julian Guerra, II, President

State of Kansas) SS The foregoing instrument acknowledged before
Sedgwick County) me, this 8 day of August, 2014, by Julian Guerra, II, President
of Perfekta, Inc., a Kansas corporation, on behalf of the corporation.

Candice S. Friesen, Notary Public
CANDICE S. FRIESEN

My App't. Exp. 12/04/2017

We, the undersigned holders of a mortgage on the
above described property, do hereby consent to this plat of "PERFEKTA
ADDITION", Wichita, Sedgwick County, Kansas.
INTRUST Bank, N.A.

Roger G. Eastwood, Division Director
ROGER G. EASTWOOD

State of Kansas) SS The foregoing instrument acknowledged be-
Sedgwick County) fore me, this 8 day of August, 2014, by Roger G. Eastwood,
Division Director of INTRUST Bank, N.A., on behalf of the bank.

Joleen Simon, Notary Public
JOLEEN SIMON

My App't. Exp. 11/14/15

This plat of "PERFEKTA ADDITION", Wichita,
Sedgwick County, Kansas has been submitted to and approved by the
Wichita-Sedgwick County Metropolitan Area Planning Commission, Wichita,
Kansas.
Dated this 8 day of August, 2014.
Wichita-Sedgwick County Metropolitan Area Planning Commission

Don Klausmeyer, Chair

John L. Schlegel, Secretary

This plat approved and all dedications
shown hereon accepted by the City Council of the City of Wichita,
Kansas, this 8 day of August, 2014.

Carl Brewer, Mayor

Karen Sublett, City Clerk

Reviewed in accordance with K.S.A. 58-2005
on this 8 day of August, 2014.

Tricia L. Robello, L.S. #1246
Deputy County Surveyor
Sedgwick County, Kansas

Entered on transfer record this 8 day
of August, 2014.

Kelly B. Arnold, County Clerk

State of Kansas) SS This is to certify that this plat has been
Sedgwick County) filed for record in the office of the Register of Deeds, this 8 day
of August, 2014 at 8 o'clock A.M.; and is duly recorded.

Bill Meek, Register of Deeds

Tonya Buckingham, Deputy

NOTE:
A drainage plan has been developed for the plat and that all drainage
easements, rights-of-way, or reserves shall remain at established grade or
as modified with the approval of the applicable City or County Engineer and
unobstructed to allow for the conveyance of stormwater.