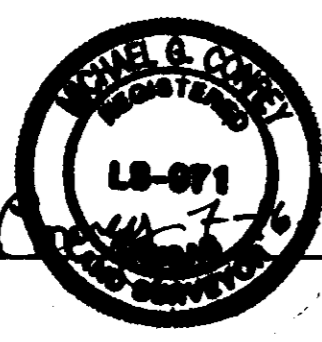


SILVER SPUR 5TH ADDITION WICHITA, SEDGWICK COUNTY, KANSAS

State of Kansas) SS
Sedgwick County) We, Baughman Company, P.A., Surveyors in
aforesaid county and state do hereby certify that we have surveyed and
plotted "SILVER SPUR 5TH ADDITION", Wichita, Sedgwick County, Kansas
and that the accompanying plot is a true and correct exhibit of the
property surveyed, described as and being a replat of Lot 1, and vacated
Clarence Ave. accruing thereto, Silver Spur Second Addition, Wichita,
Sedgwick County, Kansas, being more particularly described as follows:
Beginning at the northeast corner of said Lot 1; thence southerly along
the east line of said Lot 1 and along the east line of said vacated
Clarence Ave.; thence westerly along the south line of said
vacated Clarence Ave. and along the south line of said Lot 1, 1292.3 feet,
more or less, to a deflection corner in said west line; thence
easterly along the middle segment of the west line of said Lot 1, 962.79
feet, more or less, to a deflection corner in said west line; thence
northerly along the most northerly segment of the west line of said Lot 1,
1249.45 feet, more or less, to the most northerly northwest corner of
said Lot 1; thence easterly along the north line of said Lot 1, 331.1 feet,
more or less, to the point of beginning, TOGETHER with a portion of the
Northeast Quarter of Section 18, Township 28 South, Range 1 East, of the
Sixth Principal Meridian, Sedgwick County, Kansas described as beginning at
the northwest corner of said Northeast Quarter; thence S00°56'54"E
(assumed) along the west line of said Northeast Quarter (also being the
east line of Lot 1, Silver Spur Second Addition to Wichita, Kansas,
Sedgwick County, Kansas), 1501.38 feet, to a point on the west line of
said Northeast Quarter, said point is 1149.40 feet north of the southwest
corner of said Northeast Quarter; thence N89°02'32"E, along the westerly
extension of the north line of Lot 1, South Lake Addition to the City of
Wichita, Sedgwick County, Kansas, 30.00 feet; thence N00°56'54"W, parallel
with the west line of said Northeast Quarter, 1501.36 feet to a point on
the north line of said Northeast Quarter; thence S89°05'47"W, along the
north line of said Northeast Quarter, 30.00 feet to the Point of Beginning.
Subject to Road Right of Ways of record.

Existing public easements and dedications being
vacated by virtue of K.S.A. 12-512b, as amended.



Michael G. Conroy, Surveyor

Know all men by these presents that we,
the undersigned, have caused the land in the surveyors certificate to be
platted into a Lot, a Block, and a Street, to be known as "SILVER SPUR
5TH ADDITION", Wichita, Sedgwick County, Kansas. The utility easement is
herby granted as indicated for the construction and maintenance of all
public utilities. The drainage and utility easement is hereby granted as
indicated for drainage purposes and for the construction and maintenance
of all public utilities. The street is hereby dedicated to and for the use
of the public. Access controls shall be as depicted on the face of the
plot and are hereby granted to the City of Wichita, Kansas.

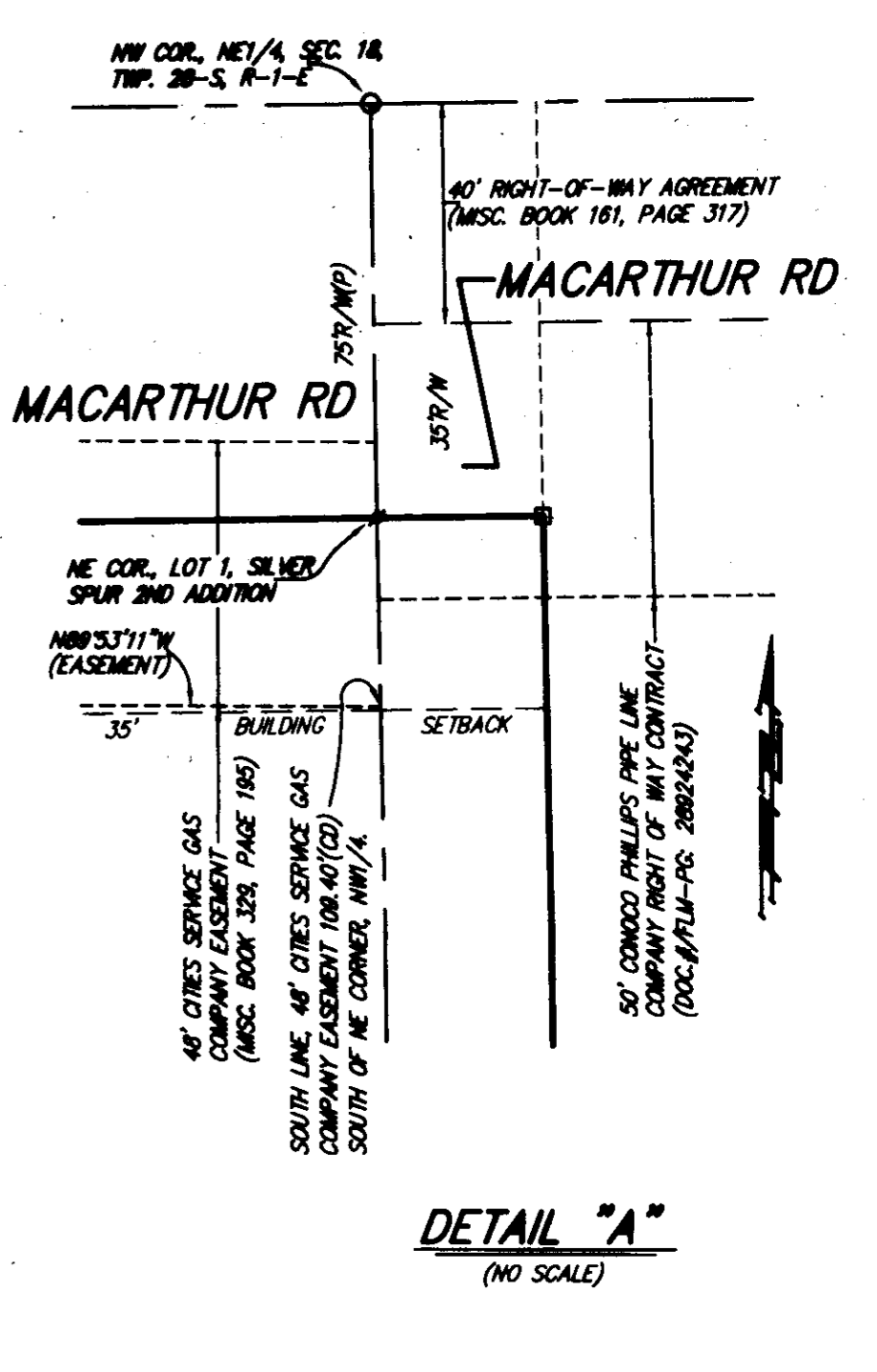
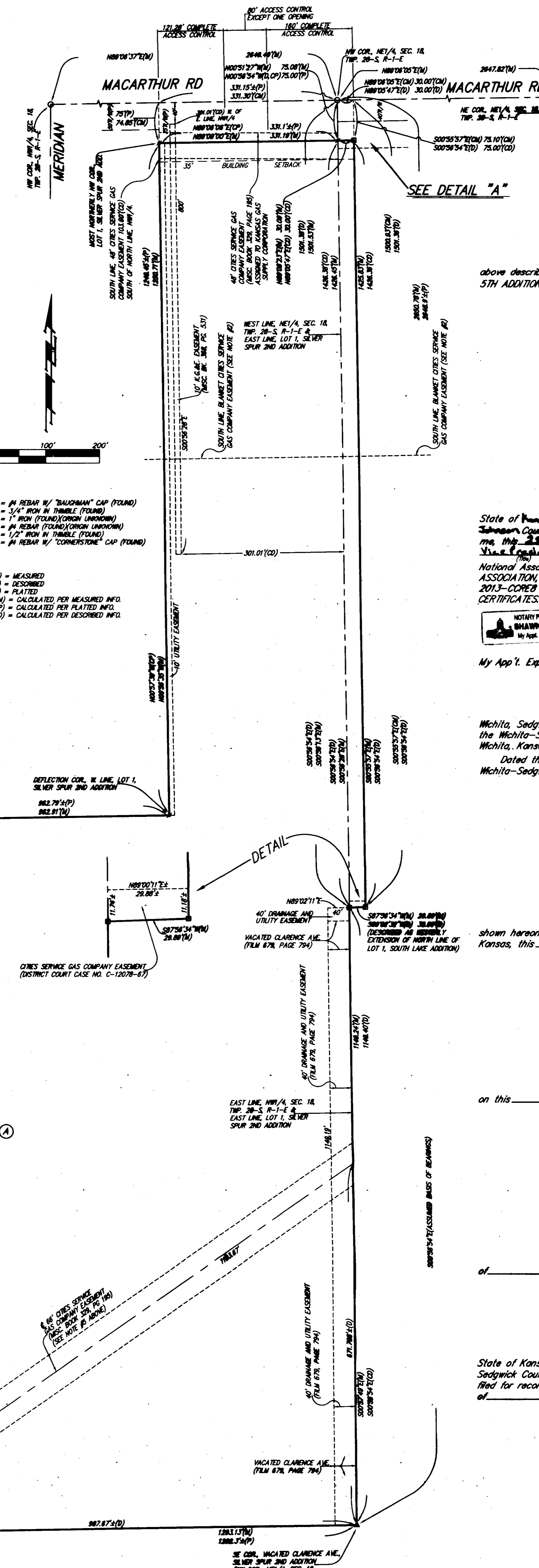
By: AMERICAN HOME SPE-3, LLC,
a Delaware limited liability company
Its: Managing Member

By: Ross Partrich
Authorized Signatory

State of Michigan) SS
Oakland County) The foregoing instrument acknowledged
before me, this 24th day of July, 2014, by Ross Partrich,
Authorized Signatory of AMERICAN HOME SPE-3, LLC, a Delaware limited
liability company, as Managing Member of TMW OAKS, LLC, a
Delaware limited liability company, on behalf of the limited liability
company.

Notary Public
Sheryl K. Stenseth

- NOTES:
- EXISTING BLANKET PIPELINE RIGHT-OF-WAY CONTRACT TO M. G. RULE OVER PART OF THE NE 1/4 OF SEC. 18, TWP. 28-S, R-1-E RECORDED IN MISC. BOOK 41, PAGE 564, AND ASSIGNED TO CITIES SERVICE GAS COMPANY IN THE DOCUMENT ENTITLED "CONVEYANCE OF PIPELINE AND ASSIGNMENT OF PIPELINE RIGHT-OF-WAY" RECORDED IN MISC. BOOK 126, PAGE 93.
 - EXISTING BLANKET CITIES SERVICE GAS COMPANY PIPELINE EASEMENT (CONDEEMED IN DISTRICT COURT CASE NO. 03210), OVER THE N 1/2 OF THE N 1/2 OF THE NE 1/4 AND THE N 1/2 OF THE N 1/2 OF THE NW 1/4 OF SEC. 18, TWP. 28-S, R-1-E RECORDED IN MISC. BOOK 122, PAGE 512, AND ASSIGNED TO KANSAS GAS SUPPLY CORPORATION IN MISC. BOOK 521, PAGE 26.
 - EXISTING PIPE LINE ORDER BY THE BOARD OF COUNTY COMMISSIONERS, SEDGWICK COUNTY, KANSAS FOR THE BENEFIT OF CITIES SERVICE OIL COMPANY ALLOWING FOR THE LAYING OF A 4 INCH PIPE LINE UNDER AND ACROSS ALL PUBLIC HIGHWAYS ALONG THE ROUTE OF SAID PIPE LINE RECORDED IN MISC. BOOK 373, PAGE 472.
 - EXISTING BLANKET CITIES SERVICE OIL COMPANY RIGHT-OF-WAY AGREEMENT OVER PART OF THE NE 1/4 OF SEC. 18, TWP. 28-S, R-1-E RECORDED IN MISC. BOOK 827, PAGE 475, AND ASSIGNED TO KOCH PIPELINES, INC. IN THE DOCUMENT ENTITLED "ASSIGNMENT, CONVEYANCE AND BILL OF SALE" RECORDED IN FILM 1356, PAGE 1808.
 - THE 66' CITIES SERVICE GAS COMPANY EASEMENT AS DESCRIBED AND RECORDED IN MISC. BOOK 328, PAGE 185, SEDGWICK COUNTY RECORDS HAS BEEN ABANDONED.
 - BLANKET EASEMENT FOR TELECOMMUNICATION RIGHTS TRANSFERRED TO SEA BREEZE COMMUNICATION COMPANY OVER THE NE 1/4 OF SEC. 18, TWP. 28-S, R-1-E IN THE DOCUMENT ENTITLED "MEMORANDUM OF TRANSFER AND CONTRIBUTION OF TELECOMMUNICATION RIGHTS" RECORDED IN FILM 2333, PAGE 11.
 - BLANKET GRANT OF RIGHT OF WAY TO THE KANSAS POWER AND LIGHT COMPANY OVER LOT 1, SILVER SPUR SECOND ADDITION RECORDED IN FILM 835, PAGE 821.
 - 10 FOOT ONEK, INC. GRANT OF RIGHT OF WAY (FILM 2631, PAGE 2216), OVER LOT 1 AND VACATED CLARENCE AVENUE ACCORDING THERETO, SILVER SPUR SECOND ADDITION. EASEMENT TO BE 5 FEET EACH SIDE OF THE PIPELINE AS LAD. LOCATION OF PIPELINE UNDEFINED.



We, the undersigned holders of a mortgage on the
above described property, do hereby consent to this plat of "SILVER SPUR
5TH ADDITION", Wichita, Sedgwick County, Kansas.

U.S. BANK NATIONAL ASSOCIATION, AS TRUSTEE,
IN TRUST FOR THE HOLDERS OF COMM
2013-COREB MORTGAGE TRUST COMMERCIAL
MORTGAGE PASS-THROUGH CERTIFICATES

By: Midland Loan Services, a division of PNC Bank,
National Association, its Master Servicer

By: Alan Torgler
Name: Alan Torgler
Title: Vice President

State of Kansas) SS
Sedgwick County) The foregoing instrument acknowledged before
me, this 24th day of July, 2014, by Alan Torgler,
Vice President of Midland Loan Services, a division of PNC Bank,
National Association, as Master Servicer of U.S. BANK NATIONAL
ASSOCIATION, AS TRUSTEE, IN TRUST FOR THE HOLDERS OF COMM
2013-COREB MORTGAGE TRUST COMMERCIAL MORTGAGE PASS-THROUGH
CERTIFICATES.

Notary Public: Shawna M. Goddard
My Appl. Exp. 11/30/15

This plat of "SILVER SPUR 5TH ADDITION",
Wichita, Sedgwick County, Kansas has been submitted to and approved by
the Wichita-Sedgwick County Metropolitan Area Planning Commission,
Wichita, Kansas.

Dated this 24th day of July, 2014.
Wichita-Sedgwick County Metropolitan Area Planning Commission

Don Klausmeyer, Chair
John L. Schlegel, Secretary

This plat approved and all dedications
shown hereon accepted by the City Council of the City of Wichita,
Kansas, this 24th day of July, 2014.

Carl Brewer, Mayor
Karen Sublett, City Clerk

Reviewed in accordance with K.S.A. 58-2005
on this 24th day of July, 2014.

Tricia L. Robacka, L.S. #1246
Deputy County Surveyor
Sedgwick County, Kansas

Entered on transfer record this 24th day
of July, 2014.

Kelly B. Arnold, County Clerk

State of Kansas) SS
Sedgwick County) This is to certify that this plat has been
filed for record in the office of the Register of Deeds, this 24th day
of July, 2014 at 10:00 a.m. and is duly recorded.

Bill Mook, Register of Deeds
Tonja Buckingham, Deputy



NOTE:
A drainage plan has been developed for the plat and that all drainage
easements, rights-of-way, or reserves shall remain at established
grades or as modified with the approval of the applicable City or County
Engineer and unobstructed to allow for the conveyance of stormwater.