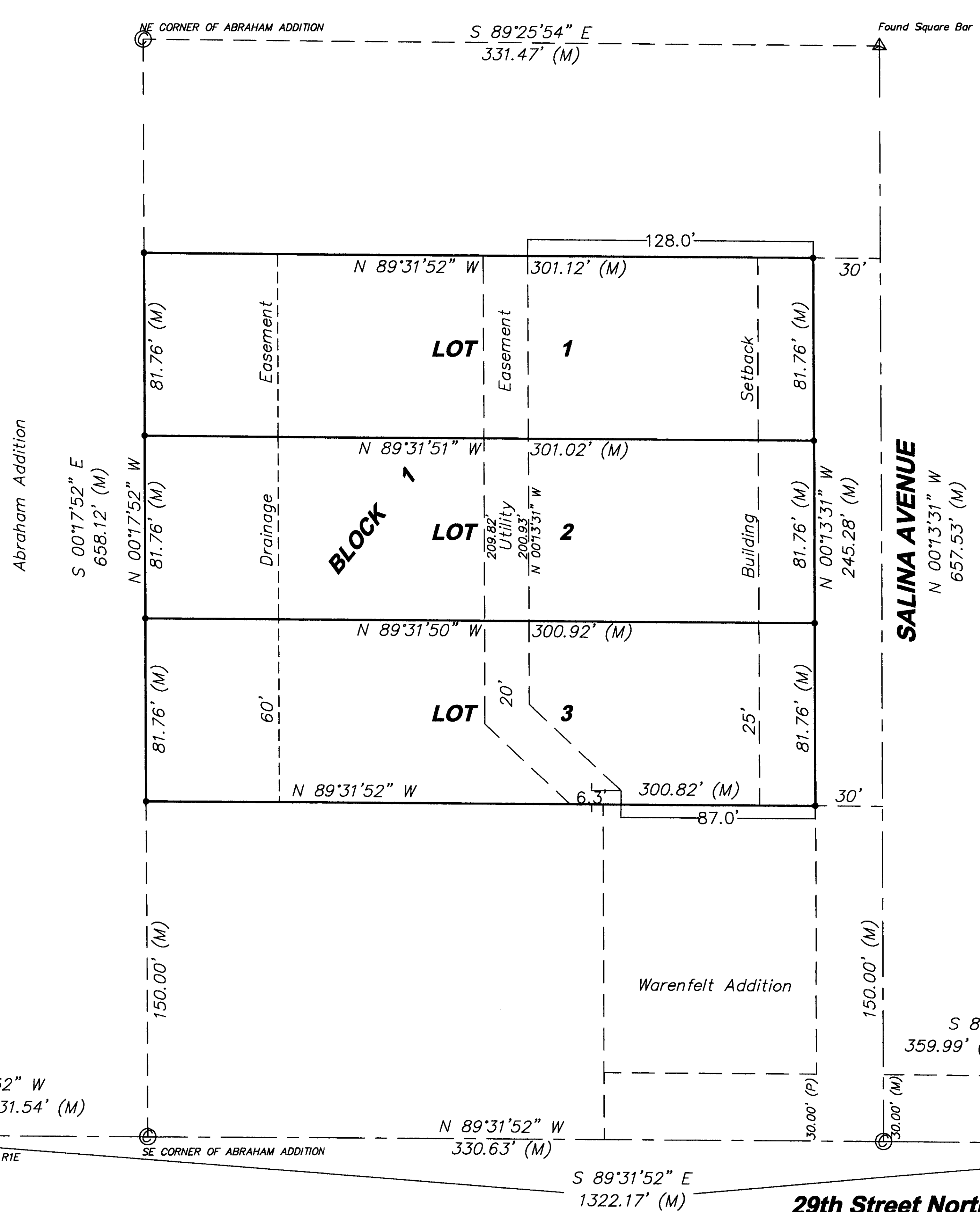


# SOLIS ADDITION

## WICHITA, SEDGWICK COUNTY, KANSAS



### CERTIFICATE OF SURVEY

State of Kansas }  
 County of Sedgwick } SS  
 I, Chad R. Abbott, the undersigned registered land surveyor of the State of Kansas, do hereby certify that the following described tract of land was surveyed on December 18, 2013. The survey was made by me or under my direct supervision and the accompanying plat "SOLIS ADDITION, WICHITA, SEDGWICK COUNTY, KANSAS", is a true and correct exhibit of the property surveyed, described as follows:

The South 3 acres of the East Half of the South 10 acres of the West Half of the Southwest Quarter of the Southwest Quarter of Section 32, Township 26 South, Range 1 East of the 6th P.M., EXCEPT the South 150 feet of said described tract in Sedgwick County, Kansas.

Existing public easements and dedications being vacated by virtue of K.S.A. 12-512b, as amended.

Chad R. Abbott L.S. #1340

### PLANNING COMMISSION CERTIFICATE

State of Kansas }  
 County of Sedgwick } SS  
 This plat of "SOLIS ADDITION, WICHITA, SEDGWICK COUNTY, KANSAS" has been submitted to and approved by the Wichita-Sedgwick County Metropolitan Area Planning Commission, Wichita, Kansas.

Dated this \_\_\_\_\_ day of \_\_\_\_\_, 2015.

WICHITA-SEDGWICK COUNTY METROPOLITAN PLANNING COMMISSION

Matthew J. Goolsby, Chairman  
 Attest: John L. Schlegel, Secretary

### OWNER'S CERTIFICATE

State of Kansas }  
 County of Sedgwick } SS  
 Know all men by these presents that we the undersigned owners of the land as above set forth in the Surveyor's Certificate, have caused the same to be surveyed and platted into lots and a block. The same to be known as "SOLIS ADDITION, WICHITA, SEDGWICK COUNTY, KANSAS". The 30' Street Right-of-Way along Salina Avenue is hereby dedicated to and for the use of the public. The 20' Utility Easement is hereby dedicated to and for the use of the public. The 60' Drainage Easement is hereby dedicated to and for the use of the public. A drainage plan has been developed for the plat and all drainage easements, right-of-ways, or reserves shall remain at established grades or as modified with the approval of the applicable City or County Engineer, and will remain unobstructed to allow for the conveyance of stormwater.

Jesus A. Solis-Garcia Ruth N. Barboza Readesolis

### GOVERNING BODY

State of Kansas }  
 County of Sedgwick } SS  
 This plat approved and all dedications shown hereon, if any, accepted by the City of Wichita, Kansas, this \_\_\_\_\_ day of \_\_\_\_\_, 2015.

At the Direction of the City Council

Attest: Karen Sublett, City Clerk

### NOTARY CERTIFICATE

State of Kansas }  
 County of Sedgwick } SS  
 BE IT REMEMBERED, that on this \_\_\_\_\_ day of \_\_\_\_\_, 2015, before me the undersigned, a Notary Public in and for the County and State aforesaid, came Jesus A. Solis-Garcia and Ruth N. Barboza Readesolis, husband and wife, to me personally known to be the same persons who executed the foregoing instrument of writing and duly acknowledged the execution of the same.

IN WITNESS WHEREOF, I have hereunto set my hand and affixed my official seal, the day and year above written.

Notary Public

My Appointment Expires: \_\_\_\_\_

### TRANSFER RECORD

State of Kansas }  
 County of Sedgwick } SS  
 Entered on transfer record this \_\_\_\_\_ day of \_\_\_\_\_, 2015

Kelly B. Arnold, County Clerk

### REGISTER OF DEEDS

State of Kansas }  
 County of Sedgwick } SS  
 This is to certify that this instrument was filed for record in the Register of Deeds office this \_\_\_\_\_ day of \_\_\_\_\_, 2015 at \_\_\_\_\_ o'clock \_\_\_\_\_; and is duly recorded.

Bill Meek, Register of Deeds  
 Attest: Tonya E. Buckingham, Deputy

### COUNTY SURVEYOR

State of Kansas }  
 County of Sedgwick } SS  
 Reviewed in accordance with K.S.A. 58-2005 on this \_\_\_\_\_ day of \_\_\_\_\_, 2015.

Tricia L. Robello #1248  
 Deputy County Surveyor  
 Sedgwick County, Kansas

**Abbott and Survey**  
 520 S. Holland, Ste. 103 Wichita, KS 67209  
 Ph. 316.262.2262 Fax 316.262.2268  
 surveyors@benchmarkks.net

**LEGEND:**  
 (M) = MEASURED OR CALCULATED FROM MEASUREMENT  
 (P) = PLATTED  
 ● = SET 1/2" REBAR WITH LS #1340 CAP  
 ▲ = FOUND MONUMENT (AS NOTED)  
 ○ = CALCULATED

