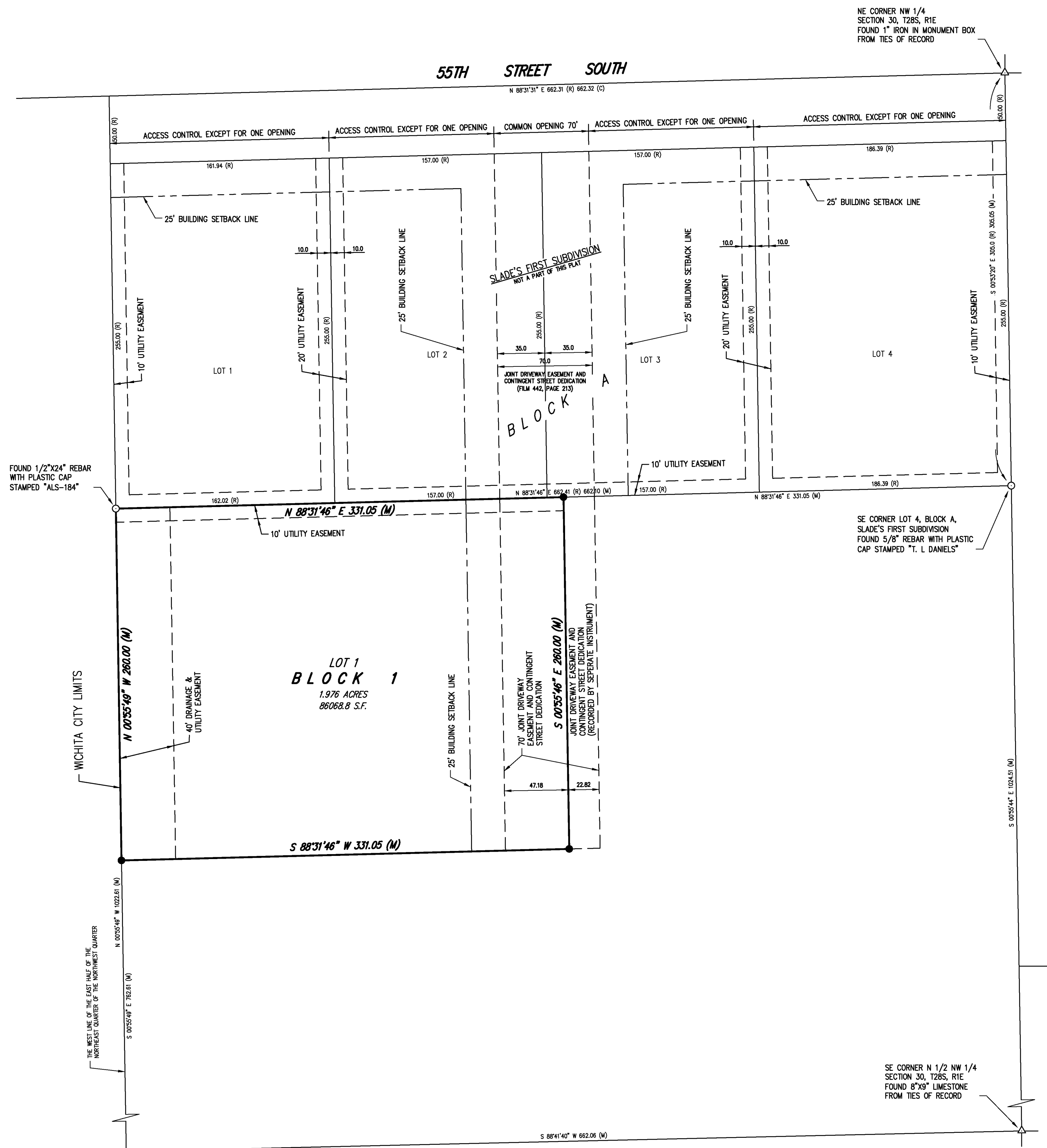


ONE-STEP FINAL PLAT
SLADE'S SECOND ADDITION
 AN ADDITION TO WICHITA, SEDGWICK COUNTY, KANSAS.

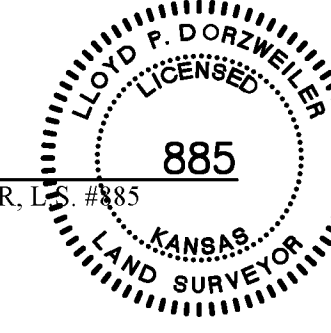


SURVEYOR'S CERTIFICATE AND DESCRIPTION

I, LLOYD P. DORZWEILER, A LICENSED LAND SURVEYOR OF THE STATE OF KANSAS, DO HEREBY CERTIFY THAT THE FOLLOWING DESCRIBED TRACT OF LAND WAS SURVEYED ON _____ DAY OF _____, 20____ AND THE ACCOMPANYING FINAL PLAT PREPARED AND THAT ALL MONUMENTS SHOWN HEREIN ACTUALLY EXIST AND THEIR POSITIONS ARE CORRECTLY SHOWN TO THE BEST OF MY KNOWLEDGE AND BELIEF:

A PORTION OF THE EAST HALF OF THE NORTHEAST QUARTER OF THE NORTHWEST QUARTER OF SECTION 30, TOWNSHIP 28 SOUTH, RANGE 1 EAST, SEDGWICK COUNTY, KANSAS DESCRIBED AS FOLLOWS:
 BEGINNING AT THE SOUTHWEST CORNER OF LOT 1, BLOCK A, SLADE'S FIRST SUBDIVISION, SEDGWICK COUNTY, KANSAS; THENCE NORTH 88°31'46" EAST (BASIS OF BEARING IS NAD83 GRID KANSAS SOUTH ZONE) ALONG THE SOUTH LINE OF SAID SLADE'S FIRST SUBDIVISION A DISTANCE OF 331.05 FEET; THENCE SOUTH 00°55'46" EAST 260.00 FEET; THENCE SOUTH 88°31'46" WEST PARALLEL WITH THE SOUTH LINE OF SAID SLADE'S FIRST SUBDIVISION A DISTANCE OF 331.05 FEET TO THE WEST LINE OF THE EAST HALF OF THE NORTHEAST QUARTER OF THE NORTHWEST QUARTER; THENCE NORTH 00°55'49" WEST ALONG THE WEST LINE OF THE EAST HALF OF THE NORTHEAST QUARTER OF THE NORTHWEST QUARTER 260.00 FEET TO THE POINT OF BEGINNING, CONTAINING 1.976 ACRES.

EXISTING PUBLIC EASEMENTS AND DEDICATIONS ARE BEING VACATED BY VIRTUE OF K.S.A. 12-512B AS AMENDED.



LLOYD P. DORZWEILER, L.S. #885

OWNER'S CERTIFICATE AND DEDICATION

STATE OF KANSAS)
) SS
 SEDGWICK COUNTY)

KNOW ALL MEN BY THESE PRESENT THAT WE, UNDERSIGNED OWNER(S) OF THE LAND DESCRIBED IN THE SURVEYOR'S CERTIFICATE, HAVE CAUSED THE SAME TO BE SURVEYED AND SUBDIVIDED ON THE ACCOMPANYING PLAT INTO A LOT AND A BLOCK UNDER THE NAME OF SLADE'S SECOND ADDITION AN ADDITION TO WICHITA, SEDGWICK COUNTY, KANSAS. THE DRAINAGE AND UTILITY EASEMENTS ARE HEREBY GRANTED AS INDICATED FOR DRAINAGE PURPOSES AND FOR THE CONSTRUCTION AND MAINTENANCE OF ALL PUBLIC UTILITIES. ALL ABUTTER'S RIGHTS OF ACCESS TO AND FROM 55TH STREET SOUTH OVER AND ACROSS THE NORTH LINE OF BLOCK A, SLADE'S FIRST SUBDIVISION, SEDGWICK COUNTY, KANSAS SHALL BE OBSERVED. THE CONTINGENT STREET DEDICATION SHALL BECOME EFFECTIVE IF THE CITY OF WICHITA DETERMINES A NEED FOR SUCH DEDICATION. A DRAINAGE PLAN HAS BEEN DEVELOPED FOR THE PLAT. ALL DRAINAGE EASEMENTS, RIGHTS-OF-WAY, OR RESERVES SHALL REMAIN AT ESTABLISHED GRADES AND UNOBSERVED TO ALLOW FOR CONVEYANCE OF STORMWATER, UNLESS MODIFIED WITH THE APPROVAL OF THE APPLICABLE CITY OF COUNTY ENGINEER.

DANIEL R. MCCLURE)
 DEBORAH E. MCCLURE)

NOTARY CERTIFICATE

STATE OF KANSAS, COUNTY OF SEDGWICK } SS:

THE FOREGOING INSTRUMENT WAS ACKNOWLEDGED BEFORE ME THIS ____ DAY OF _____, 20____, BY DANIEL R. MCCLURE AND DEBORAH E. MCCLURE.

_____, NOTARY PUBLIC

MY COMMISSION EXPIRES: _____

PLANNING COMMISSION CERTIFICATE

STATE OF KANSAS, CITY OF WICHITA } SS:

THIS PLAT OF SLADE'S SECOND ADDITION AN ADDITION TO WICHITA, SEDGWICK COUNTY, KANSAS HAS BEEN APPROVED BY THE WICHITA-SEDGWICK COUNTY METROPOLITAN AREA PLANNING COMMISSION, WICHITA, KANSAS.

DATED THIS _____ DAY OF _____, 20____.

WICHITA-SEDGWICK COUNTY METROPOLITAN AREA PLANNING COMMISSION

 MATTHEW J. GOOLSBY, CHAIR

 JOHN L. SCHIEGEL, SECRETARY

GOVERNING BODY CERTIFICATE

STATE OF KANSAS, CITY OF WICHITA } SS:

THIS PLAT APPROVED AND ALL DEDICATIONS SHOWN HEREON, IF ANY, ARE ACCEPTED BY CITY COUNCIL OF THE CITY OF WICHITA, KANSAS, THIS ____ DAY OF _____, 20____.

 JEFF LONGWELL, MAYOR

 KAREN SUBLETT, CITY CLERK

TRANSFER RECORD

ENTERED ON TRANSFER RECORD THIS ____ DAY OF _____, 20____.

 KELLY B. ARNOLD, COUNTY CLERK

REGISTER OF DEEDS

STATE OF KANSAS, CITY OF WICHITA } SS:

THIS IS TO CERTIFY THAT THIS INSTRUMENT WAS FILED FOR RECORD IN THE REGISTER OF DEEDS OFFICE, AT _____ (A.M.) (P.M.), ON THIS ____ DAY OF _____, 20____.

 BILL MEEK, REGISTER OF DEEDS

 TONYA BUCKINGHAM, DEPUTY

COUNTY SURVEYOR CERTIFICATE

STATE OF KANSAS, SEDGWICK COUNTY } SS:

I HEREBY CERTIFY THAT THIS SURVEY HAS BEEN REVIEWED FOR FILING, PURSUANT TO K.S.A. 58-2005 AND K.S.A. 58-2001 FOR CONTENT ONLY AND IS IN COMPLIANCE WITH THOSE PROVISIONS. NO OTHER WARRANTIES ARE EXTENDED OR IMPLIED.

 TRICIA L. ROBELLO, L.S. #1246
 DEPUTY COUNTY SURVEYOR
 SEDGWICK COUNTY, KANSAS

LEGEND OF SYMBOLS & ABBREVIATIONS

- △ SECTION SUBDIVISION CORNER FOUND
- SURVEY MONUMENT FOUND
- SET 1/2" REBAR WITH CAP STAMPED "ALPHA CLS-184"
- N. NORTH
- S. SOUTH
- E. EAST
- W. WEST
- . DEGREES
- ' FEET OR MINUTES
- " INCHES OR SECONDS
- SQ. SQUARE
- FT. FEET
- VOL. VOLUME
- PG. PAGE
- O.P. OFFICIAL RECORD
- C. CALCULATED
- R. RECORD
- M. MEASURED

MINIMUM PAD ELEVATIONS	
LOT NUMBER	ELEVATION
1	1372.0 (NAVD88)

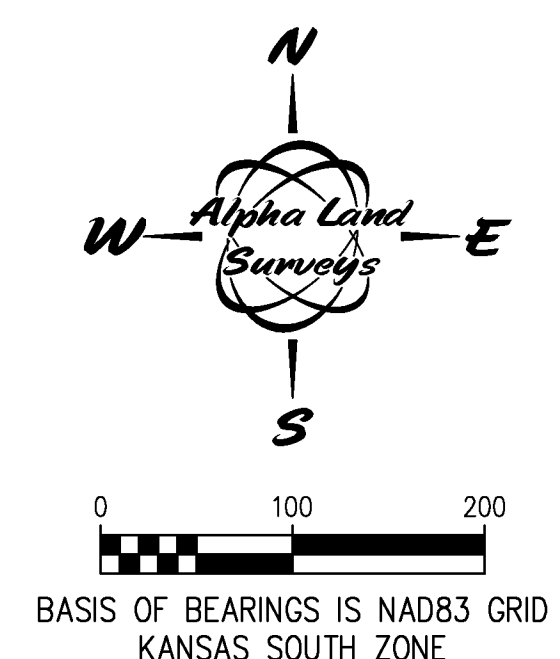
FLOOD NOTE

THIS PROPERTY IS LOCATED WITHIN FLOOD ZONE "X" (AREAS DETERMINED TO BE OUTSIDE THE 0.2% ANNUAL CHANCE FLOODPLAIN) AS DETERMINED BY THE NATIONAL FLOOD INSURANCE PROGRAM FLOOD INSURANCE RATE MAP FOR SEDGWICK COUNTY, KANSAS, COMMUNITY PANEL NUMBER 20173C0503E. EFFECTIVE DATE FEBRUARY 2, 2007.

BENCH MARKS

SITE DATUM: CITY OF WICHITA BRASS DISK APPROXIMATELY 1/4 MILE WEST OF MERIDIAN ON 55TH STREET SOUTH IN CENTER OF RCB ON NORTH SIDE AT SOUTH FACE OF WALK.
 ELEVATION=1273.93(NGVD29)
 ELEVATION=1274.39(NAVD88)

SBM-1: CHISELED "X" CUT ON THE SOUTHWEST CORNER OF CONCRETE SLAB NORTH SIDE OF SCALE APPROXIMATELY 76.4 FEET NORTH AND 18.9 FEET EAST OF THE SOUTHWEST CORNER OF SLADE'S SECOND ADDITION.
 ELEVATION=1272.03(NGVD29)
 ELEVATION=1272.49(NAVD88)



SURVEY TYPE: FINAL PLAT	
Alpha Land Surveys, Inc. 216 WEST SECOND AVENUE HUTCHINSON, KANSAS 67501 PH: (620) 728-0012 FAX: (620) 728-0413	
SURVEY DATE: 08/12/2014	PLOT DATE: 02/20/2015
DRAWN BY: RDB	PROJ. NO.: 140200P
CHECKED BY: LPD	SHEET 1 OF 1