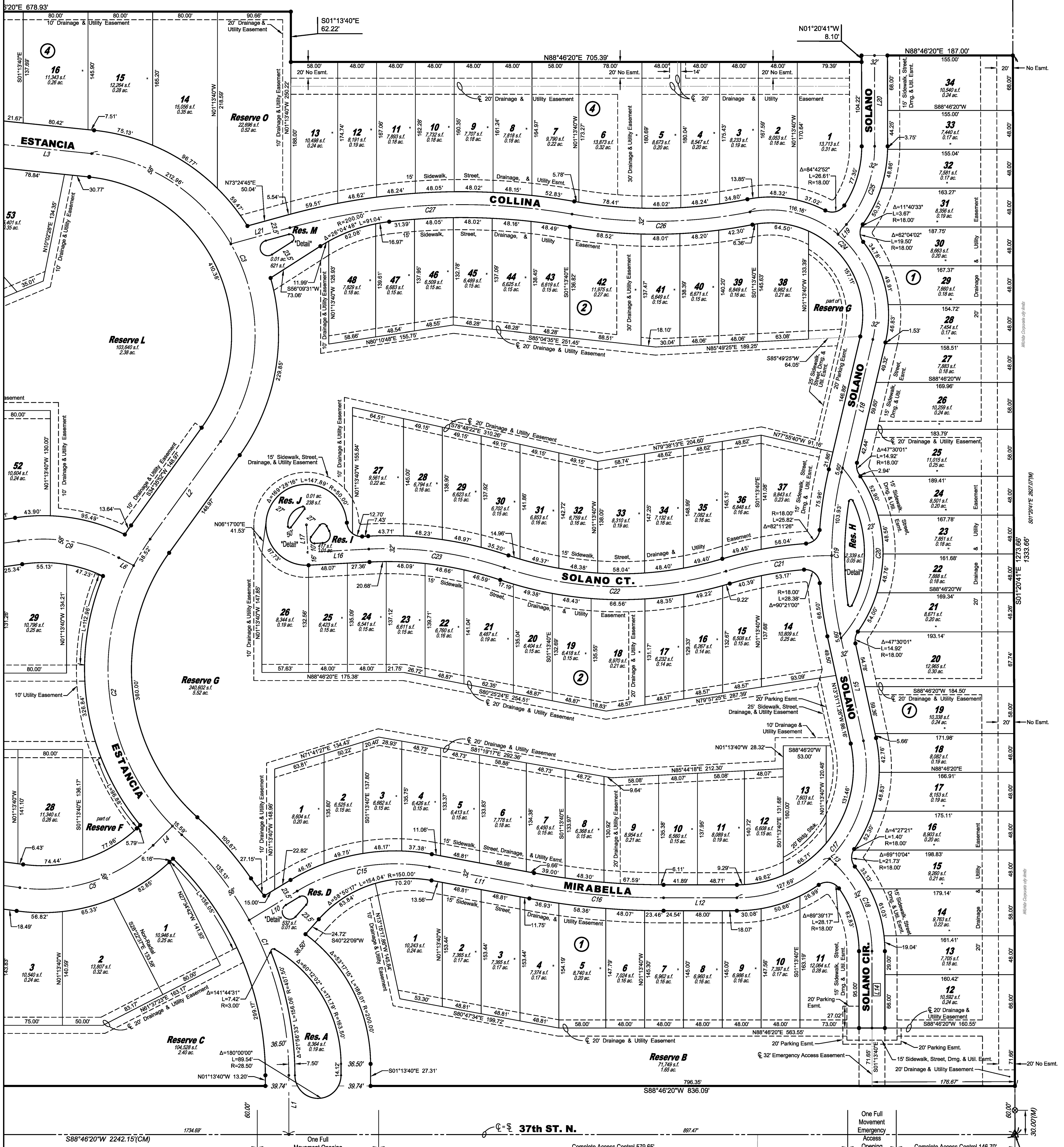


FINAL PLAT

ESTANCIA ADDITION

AN ADDITION TO WICHITA, SEDGWICK COUNTY, KANSAS

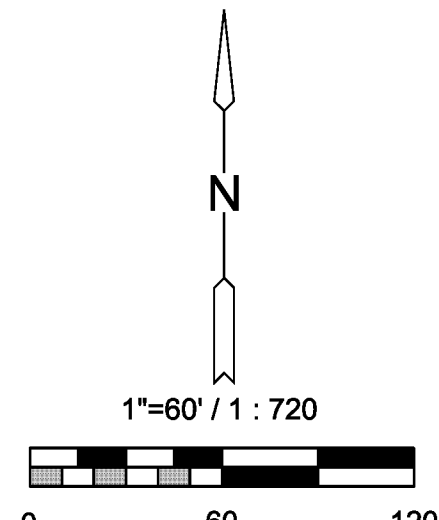
NE cor., SW 1/4, Sec. 27,
T26S, R1W, 6th P.M.
Fnd. Limestone 1.5' deep
with divot in center



LEGEND

Date of Survey: April 29, 2015

- △ = Section corner monument found
- ⊙ = Found 3/8" rebar w/ MKEC CLS 39 id. cap
- = Set 3/8" rebar w/ MKEC CLS 39 id. cap
- (M) = Measured
- (CM) = Calculated from measured
- (D) = Described
- ⊕ = Benchmark
- U.E. = Utility Easement
- D.E. = Drainage Easement



Basis of Bearing: Kansas coordinate system of 1983
south zone grid bearing of N88°46'20"E on the south
of the SW 1/4, Sec. 27, T26S, R1W, 6th P.M.
This plat is surveyed and platted on NAD83 using
Kansas state plane south zone coordinates, modified to
the surface, having a combined adjustment scale factor
of 1.000120014401728

MINIMUM PAD ELEVATIONS (LOWEST OF SIDEWALKS)	
LOTS inclusive	BLOCK ELEVATION NAVD 88
1 - 48	2 1334.1
5, 6, 13, 14	4 1334.1

BENCHMARK

BM#2 ⊕ Square cut top of curb on west side of median island
and 10 foot north of the south end of said median lying
south of K-96 and Ridge Rd. (being 338 feet S. of the
NW corner SW 1/4, Sec. 27, T26S, R1W, 6th P.M.)
Elev. = 1335.80 NAVD88

