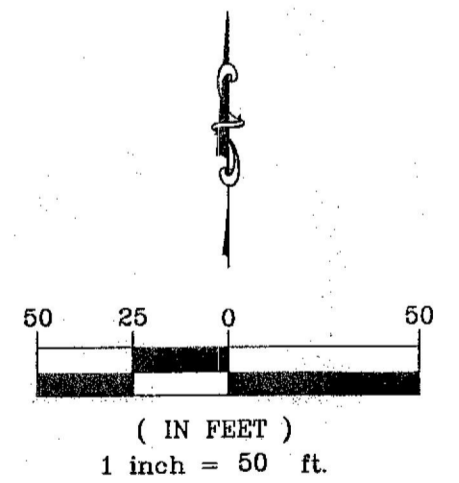
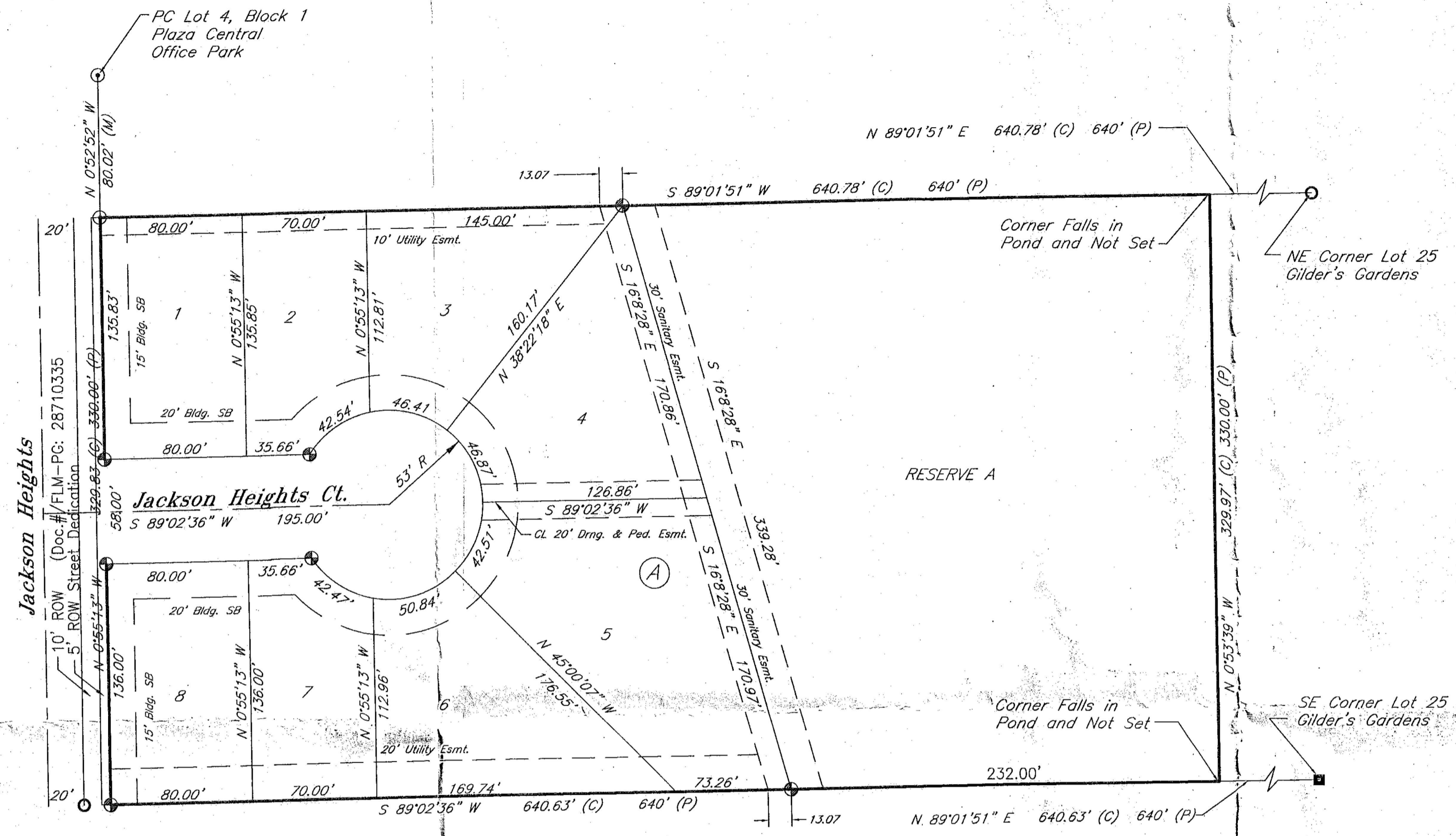


Marinita Addition
Replat of Lot 10 Gilder's Gardens
Sedgwick County, Kansas

Part of the NE 1/4, Section 22, Township 27 South, Range 2 East of the 6th. P.M.



- PLAT LEGEND**
- 1/2" Rebar (found) Savoy
 - 1/2" Rebar (found) Baughman
 - 1/2" Rebar (found) MKEC
 - ⊙ 3/4" Iron Pipe (found)
 - 1/2" Rebar
 - ⊕ 5/8" Rebar (set) KEMPA CLS #157

Benchmark
 North rim of manhole located approximately 15' north and 44 feet west of the northwest corner of subject property.
 Elevation=1354.38 NAVD 88

Minimum Pad Elevations
 Lots 1 - 8 shall be at a pad elevation of 1345.50
 Base Flood Elevation is 1343.50 (NAVD 88)

State of Kansas)
 County of Sedgwick) SS

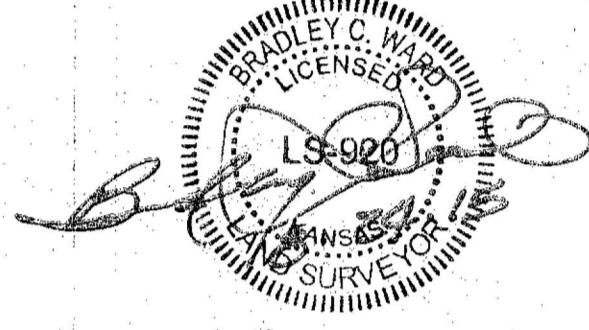
I, Bradley C. Ward, a professional land surveyor of the State of Kansas, do hereby certify that the following described tract of land was surveyed on the 20th day of May, 2015 and the accompanying final plat prepared and that all the monuments shown herein actually exist and their positions are correctly shown to the best of my knowledge and belief.

LEGAL DESCRIPTION

A tract of land generally located in the Northeast 1/4 of the Section 22, Township 27 South, Range 2 East, of the Sixth Principal Meridian, Sedgwick County, Kansas being more particularly described as:

A replat of Lot 10, Gilder's Gardens, Sedgwick County, Kansas.

All easements and rights-of-way within said tract are hereby vacated by virtue of KSA 12-512b as amended.



Bradley C. Ward, P.L.S. #920

State of Kansas)
 County of Sedgwick) SS

Know all men by these presents, that we, the undersigned, have caused the land described in the surveyor's certificate to be platted into Lots, Block, Street and Reserve to be known as Marinita Addition, Wichita, Sedgwick County, Kansas. Any street dedications shown are dedicated to and for the use of the public. Any easements are hereby granted as indicated for constructing, maintaining, operating, and repairing public utilities. The 20' Drainage & Pedestrian easement shown shall include the construction of a sidewalk and dedicated to and for the use of the public. Reserve A is platted for stormwater detention, landscaping, irrigation and beautification. Reserve A shall be owned and maintained by the owners of Lots 1-8, Block A, Marinita Addition. A drainage plan has been developed for the plat and that all drainage easements, rights-of-way, or reserves shall remain at established grades or as modified with the approval of the applicable City or County Engineer, and unobstructed to allow for the conveyance of stormwater. FEMA floodplain and regulatory floodway boundaries are subject to periodic change and such change may affect the intended land use within the subdivision. And further that the land contained herein is held and shall be conveyed subject to any applicable restrictions, reservations and covenants now on file or hereafter filed in the Office of the Register of Deeds of Sedgwick County, Kansas.

By John Greenstreet 8-24-15
 John Greenstreet, Manager Date
 Marinita, LLC

State of Kansas)
 County of Sedgwick) SS

This instrument was acknowledged before me on this 24th day of August, 2015, by John Greenstreet, Manager, Marinita, LLC

By Jeanne Davis Swankland
 Notary Public My Commission Expires: 11-18-17

State of Kansas)
 City of Wichita) SS

This plat of Marinita Addition, Wichita, Sedgwick County, Kansas, has been submitted to and approved by the Wichita-Sedgwick County Metropolitan Area Planning Commission, Wichita, Kansas. Dated this _____ day of _____, 2015.
 Wichita-Sedgwick County Metropolitan Area Planning Commission.

 Matthew J. Goolsby, Chair

 W. David Barber, Interim Secretary

State of Kansas)
 City of Wichita) SS

This plat approved and all dedications shown hereon accepted by the City Council of the City of Wichita, Kansas, this _____ day of _____, 2015.
 At the Direction of the City Council

 Jeff Longwell, Mayor

 Karen Sublett, City Clerk

Entered on transfer record this _____ day of _____, 2015.

 Kelly B. Arnold, County Clerk

State of Kansas)
 County of Sedgwick) SS

This is to certify that this plat has been filed for record in the Office of the Register of Deeds this _____ day of _____, 2015, at _____ o'clock _____ M, and is duly recorded.

 Bill Meek, Register of Deeds

 Tonya Buckingham, Deputy

Reviewed in accordance with K.S.A. 58-2005 on this _____ day of _____, 2015.

 Tricia L. Robello, L.S. #1246
 Deputy County Surveyor
 Sedgwick County, Kansas



FINAL TRACING REC'D 8.25.15

FILE COPY
 SUB 2015-00020