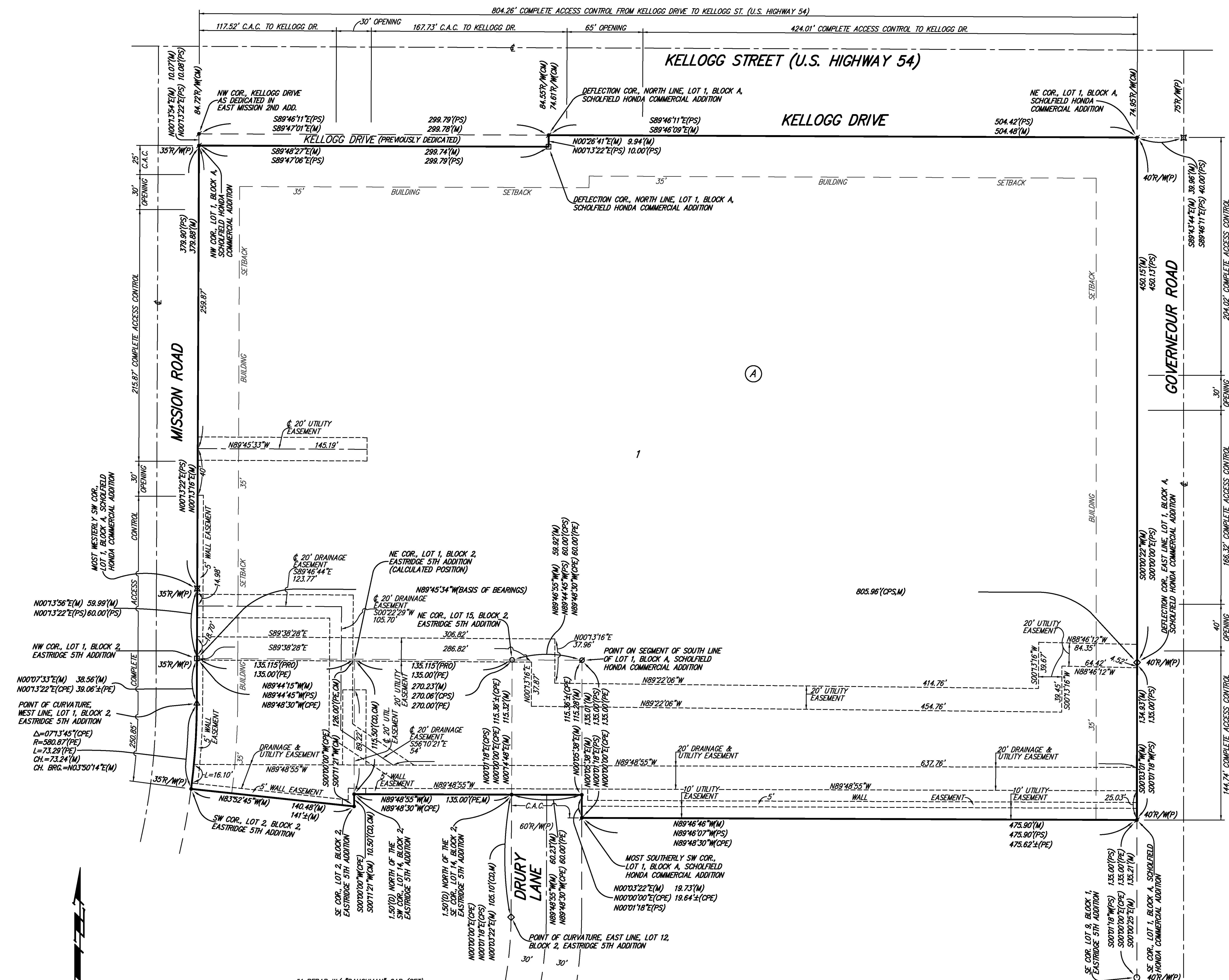


SCHOLFIELD HONDA COMMERCIAL 2ND ADDITION

WICHITA, SEDGWICK COUNTY, KANSAS



• = #4 REBAR W/ "BAUGHMAN" CAP (SET)
 # = #4 REBAR W/ "BAUGHMAN" CAP (FOUND)
 @ = 3/4" IRON PIPE (FOUND)(ORIGIN UNKNOWN)
 □ = #4 REBAR (FOUND)(ORIGIN UNKNOWN)
 ○ = 1/2" IRON PIPE (FOUND)(ORIGIN UNKNOWN)
 ⊕ = CHISELED CROSS (FOUND)(ORIGIN UNKNOWN)
 ⊙ = 1/2" PINCHED IRON PIPE (FOUND)(ORIGIN UNKNOWN)
 △ = 1" IRON PIPE (FOUND)(ORIGIN UNKNOWN)
 ▽ = 3/4" IRON PIPE W/ "PEC" CAP (FOUND)

(M) = MEASURED
 (P) = PLATTED
 (CM) = CALCULATED FROM MEASURED INFO.
 (PRO) = PROPOSED MEASUREMENT
 (PE) = PLATTED INFO. FROM EASTRIDGE 5TH ADDITION
 (CPE) = CALCULATED FROM PLATTED INFO. FROM EASTRIDGE 5TH ADDITION
 (PS) = PLATTED INFO. FROM SCHOLFIELD HONDA COMMERCIAL ADDITION
 (CPS) = CALCULATED FROM PLATTED INFO. FROM SCHOLFIELD HONDA COMMERCIAL ADDITION

NOTE:
 ADDITIONAL BUILDING SETBACKS AND OTHER REQUIREMENTS PER SCHOLFIELD HONDA COMMERCIAL COMMUNITY UNIT PLAN, (CUP2015-00003, DP-305).
 C.A.C. = COMPLETE ACCESS CONTROL
 NOTE:
 A drainage plan has been developed for the plot and that all drainage easements, rights-of-way, or easements shall remain at established grades or as modified with the approval of the applicable City or County Engineer and unobstructed to allow for the conveyance of stormwater.

State of Kansas) SS We, Baughman Company, P.A., Surveyors in Sedgwick County and state do hereby certify that we have surveyed and platted "SCHOLFIELD HONDA COMMERCIAL 2ND ADDITION", Wichita, Sedgwick County, Kansas and that the accompanying plat is a true and correct exhibit of the property surveyed, described as and being a replat of all of Lot 1, Block A, Scholfield Honda Commercial Addition, Wichita, Sedgwick County, Kansas, TOGETHER with all of Lots 1, 2, and 15, and Lot 14 except the south 1.5 feet thereof, all in Block 2, Eastridge 5th Addition to Wichita, Sedgwick County, Kansas, TOGETHER with that part of Orme Street as dedicated in said Eastridge 5th Addition lying north of said Lots 1 and 15, and TOGETHER with that part of Drury Lane as dedicated in said Eastridge 5th Addition lying east of said Lot 15 and Lot 14, except the south 1.5 feet thereof.

Existing public easements, dedications, building setbacks, and access controls, if any, being vacated by virtue of K.S.A. 12-512b, as amended.

All being situated in the Northwest Quarter of Section 30, Township 27 South, Range 2 East of the Sixth Principal Meridian, Sedgwick County, Kansas.

Baughman Company, P.A.

This plat approved and all dedications shown hereon accepted by the City Council of the City of Wichita, Kansas, this _____ day of _____, 2015.

_____, Surveyor
Michael G. Conrey

_____, Mayor
Jeff Longwell

_____, City Clerk
Karen Sublett

Know all men by these presents that we, the undersigned, have caused the land in the surveyors certificate to be platted into a Lot and a Block, to be known as "SCHOLFIELD HONDA COMMERCIAL 2ND ADDITION", Wichita, Sedgwick County, Kansas. The utility easements are hereby granted as indicated for the construction and maintenance of all public utilities. The drainage easement is hereby granted as indicated for drainage purposes. The drainage and utility easement is hereby granted as indicated for drainage purposes and for the construction and maintenance of all public utilities. The wall easements are hereby granted as indicated for the construction and maintenance of a private screening wall and utility main lines and service lines shall be allowed to cross these easements. Access controls shall be as depicted on the face of the plat and are hereby granted to the City of Wichita, Kansas. The permitted opening locations shall be as determined by the City Engineer of the City of Wichita, Kansas.

_____, President
Roger Scholfield

_____, Partner
Victor H. Scholfield

_____, Secretary
Tricia L. Robello, L.S. #1246
Deputy County Surveyor
Sedgwick County, Kansas

State of Kansas) SS The foregoing instrument acknowledged before me, this _____ day of _____, 2015, by Roger Scholfield, President of RJ Realty, LLC, a/k/a R.J. Realty, LLC, a Kansas limited liability company, on behalf of the limited liability company.

_____, Notary Public

State of Kansas) SS This is to certify that this plat has been filed for record in the office of the Register of Deeds, this _____ day of _____, 2015 at _____ o'clock _____ M; and is duly recorded.

_____, Register of Deeds
Bill Meek

_____, Deputy
Tonya Buckingham

State of Kansas) SS The foregoing instrument acknowledged before me, this _____ day of _____, 2015, by Victor H. Scholfield, Partner of V & B Scholfield, L.P., a Kansas limited partnership, on behalf of the limited partnership.

_____, Notary Public

My App't. Exp. _____

This plat of "SCHOLFIELD HONDA COMMERCIAL 2ND ADDITION", Wichita, Sedgwick County, Kansas has been submitted to and approved by the Wichita-Sedgwick County Metropolitan Area Planning Commission, Wichita, Kansas.

Dated this _____ day of _____, 2015.
 Wichita-Sedgwick County Metropolitan Area Planning Commission

_____, Chairman
Carol Chapman Neugent

_____, Interim Secretary
W. David Barber

_____, Mayor
Jeff Longwell

_____, City Clerk
Karen Sublett

Reviewed in accordance with K.S.A. 58-2005 on this _____ day of _____, 2015.

_____, President
Roger Scholfield

_____, Partner
Victor H. Scholfield

State of Kansas) SS The foregoing instrument acknowledged before me, this _____ day of _____, 2015, by Victor H. Scholfield, Partner of V & B Scholfield, L.P., a Kansas limited partnership, on behalf of the limited partnership.

_____, Notary Public

My App't. Exp. _____

_____, Register of Deeds
Bill Meek

_____, Deputy
Tonya Buckingham

