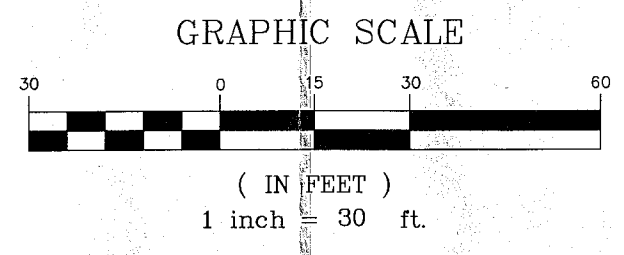
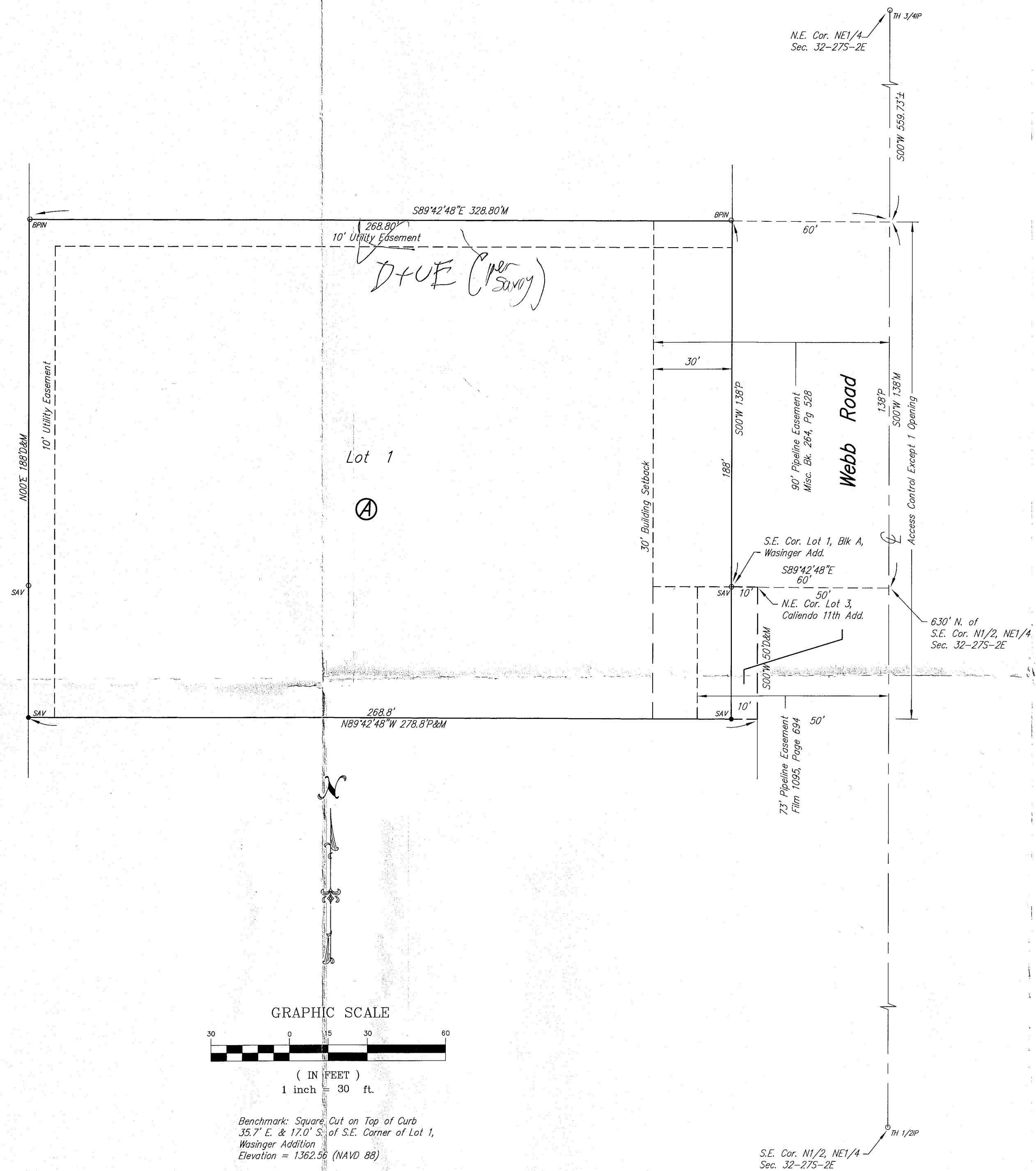


WASINGER 2ND ADDITION

Wichita, Sedgwick County, Kansas



Benchmark: Square Cut on Top of Curb
 35.7' E & 17.0' S of S.E. Corner of Lot 1,
 Wasinger Addition
 Elevation = 1,362.56 (NAVD 88)

C = Calculated
 D = Described
 M = Measured
 P = Plotted

Survey Marker Legend

- TH 1/2" = City of Wichita Control Thimble (City of Wichita)
- TH 3/4" = City of Wichita Control Thimble (City of Wichita)
- 1/2" = 1/2" Rebar (Found Origin Unknown)
- BPW = 1/2" Rebar w/Baughman Cap (Found)
- SAV = 1/2" Rebar w/Savoy Cap (Set)

State of Kansas) SS
 Sedgwick County)

We, Savoy Company, P.A., Surveyors in aforesaid county and state do hereby certify that, under the supervision of the undersigned, we have surveyed and platted "Wasinger 2nd Addition", Wichita, Sedgwick County, Kansas and that the accompanying plat is a true and correct exhibit of the property surveyed, described as and being a replat of the following:

Lot 1, Block A, Wasinger Addition, Wichita, Sedgwick County, Kansas
 AND
 The North 50 feet of Lot 3, Callendo 11th Addition, Wichita, Sedgwick County, Kansas.

All Public easements and dedications being vacated by virtue of K.S.A. 12-512b as amended.

Savoy Company, P.A.
 Mark A. Savoy, PS #788
 Surveyor

Know all men by these presents that We, the undersigned, have caused the land described in the surveyor's certificate to be platted into a Lot, Block and Street to be known as "Wasinger 2nd Addition", Wichita, Sedgwick County, Kansas. The street is hereby dedicated to and for the use of the public. The utility easements are hereby granted for the construction and maintenance of all public utilities. A drainage plan has been developed for this plat and all drainage easements, rights-of-way, or reserves shall remain at established grades, or as modified with the approval of the City Engineer and unobstructed to allow for the conveyance of storm water. Access Controls are hereby granted as shown on the face of the plat.

J. Larry Fugate Revocable Trust dated March 25, 2010
 J. Larry Fugate
 Trustee

State of Kansas) SS
 Sedgwick County)

The foregoing instrument acknowledged before me, this ___ day of _____, 2015, by J. Larry Fugate, Trustee of the J. Larry Fugate Revocable Trust dated March 25, 2010, on behalf of the Trust.

Notary Public
 My App't. Exp. _____

This plat of "Wasinger 2nd Addition", Wichita, Sedgwick County, Kansas, has been submitted to and approved by the Wichita-Sedgwick County Metropolitan Area Planning Commission, Wichita, Sedgwick County, Kansas.

Dated this ___ day of _____, 2015.

Wichita-Sedgwick County Metropolitan Area Planning Commission
OFFICE COPY
 NOT RECORDED
 Carol Chapman Neugent
 Chairman
 W. David Barbe
 Interim Secretary

THIS PLAT APPROVED BY THE SUBDIVISION COMMITTEE ON 2/2/15, SUBJECT TO THE CONDITIONS OF APPROVAL OUTLINED IN OUR LETTER DATED 1/21/15.

This plat approved and all dedications shown hereon, accepted by the City Council of the City of Wichita, Kansas, this ___ day of _____, 2015.

Jeff Longwell
 Mayor
 Karen Sublett
 City Clerk

Reviewed in accordance with K.S.A. 58-2005 on this ___ day of _____, 2015.

Deputy County Surveyor
 Sedgwick County Kansas
 Tricia L. Robello, PS #1246

Entered on transfer record this ___ day of _____, 2015.

Kelly B. Arnold
 County Clerk

State of Kansas) SS
 Sedgwick County)

This is to certify that this plat has been filed for record in the office of the Register of Deeds, this ___ day of _____, 2015, at ___ o'clock ___ M. and is duly recorded.

Register of Deeds
 Bill Meek
 Deputy
 Tonya Buckingham