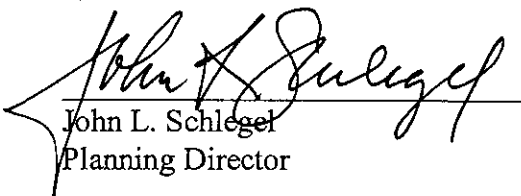


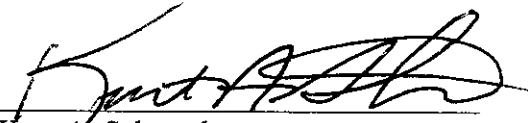
- 3) Effect on public health, safety or welfare: There will be no encroachment into public utility easements or right-of-way; therefore, there should not be a negative impact on the public health, safety or welfare nor will properties or improvements in the vicinity be materially injured.

Our signatures below indicate that a Sign Code Adjustment to increase the maximum allowed height of a ground sign to 20 feet above the height of the highway railing at a point perpendicular to the sign on the aforementioned property is hereby granted, subject to the following conditions:

- 1) The ground sign shall comply with all regulations of the Sign Code except that the maximum allowed height shall be 45.7 feet
- 2) If the Zoning Administrator finds that there is a violation of any of the conditions of the Zoning Adjustment, the Zoning Administrator, in addition to enforcing the other remedies set forth in the Unified Zoning Code, may, with the concurrence of the Planning Director, declare that the Zoning Adjustment is null and void.

The "Development Application" sign should now be removed from the property.


John L. Schlegel
Planning Director


Kurt A. Schroeder
Superintendent of Central Inspection

cc: TriMark Signworks, Attn: Byron West, 319 S Oak, Wichita, KS 67207
Kurt Schroeder, Office of Central Inspection
Dale Miller, MAPD
Paul Hays, Office of Central Inspection
Randy Sparkman, Office of Central Inspection
Herb Shaner, Office of Central Inspection
Jan Lister, Office of Central Inspection



Wichita-Sedgwick County Metropolitan Area Planning Department

August 30, 2005

Kellen Store Company, LLC dba Presto Convenience Store
Attn: Todd Brendmoen, Vice President
PO Box 609
Andover, KS 67002

FILE COPY

RE: BZA2005-00047: Sign Code Adjustment to increase the maximum allowed height of an off-site billboard sign up to 45 feet but no more than 20 feet above the height of the highway railing at a point perpendicular to the sign.

Legal Description: Lot 1, Block 1, Phillips 66 Kellogg & Tyler Addition. Generally located on the northeast corner of Kellogg Dr and Tyler Rd (1254 S Tyler).

Dear Mr. Brendmoen:

We have reviewed your request for a Sign Code Adjustment to increase the maximum allowed height a sign to 20 feet above the height of the highway railing on the aforementioned property. From reviewing your application, we understand that you propose to increase the height of a ground sign along Kellogg Drive adjacent to the overpass at Tyler Road. You submitted an exhibit that illustrates that the highest point of the highway railing at a point perpendicular to the sign is 25.7 feet above the ground elevation of the sign.

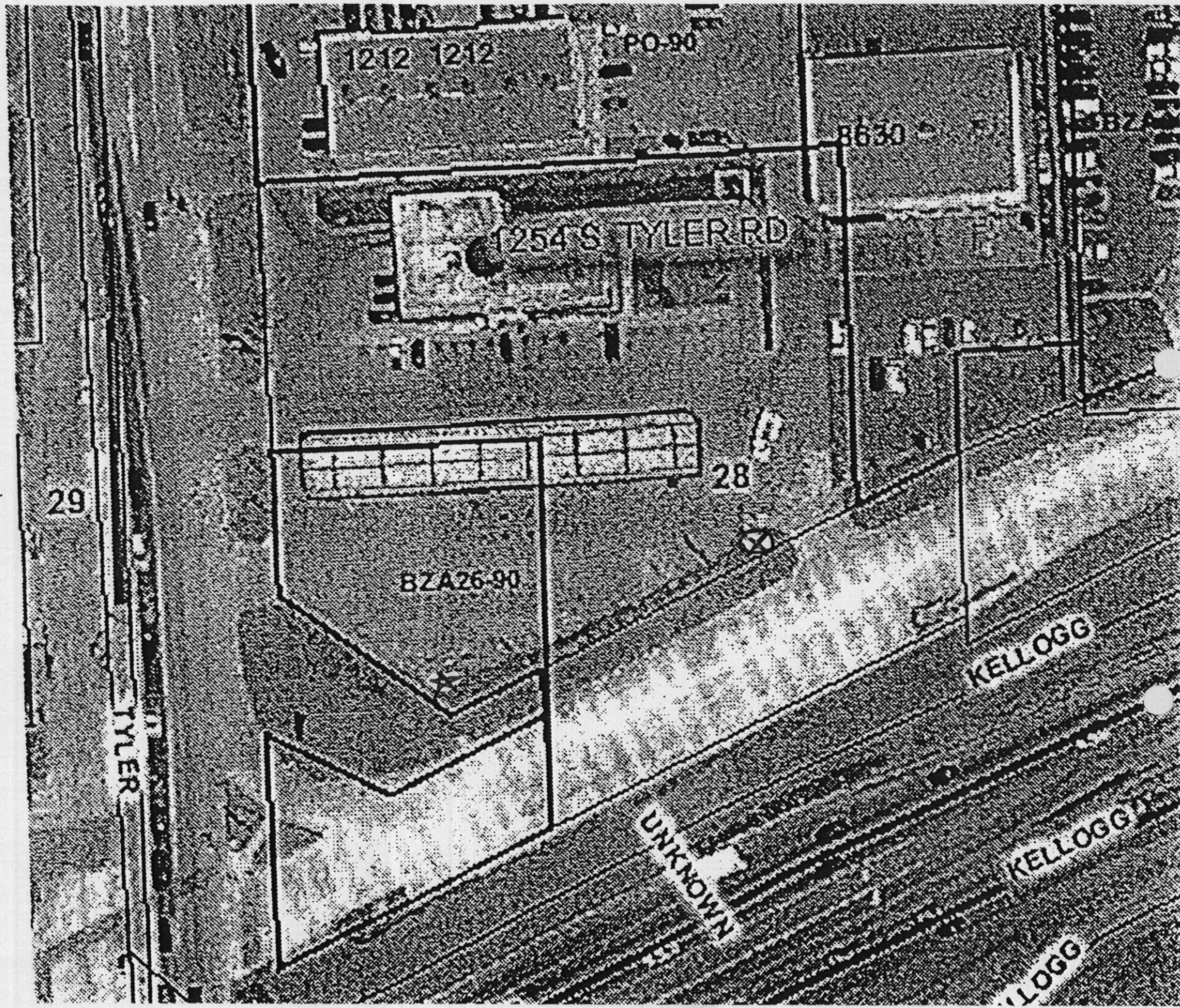
Section 24.04.251.2.h. of the Sign Code allows an adjustment to increase the maximum height of signs located within 75 feet of an elevated highway to 20 feet above the highest railing at a point perpendicular to the sign when the three conditions required by Section 24.04.251.6. of the Sign Code are met. We find that increasing the height of the sign as proposed meets the three conditions required by Section 24.04.251.6. of the Sign Code as set out below:

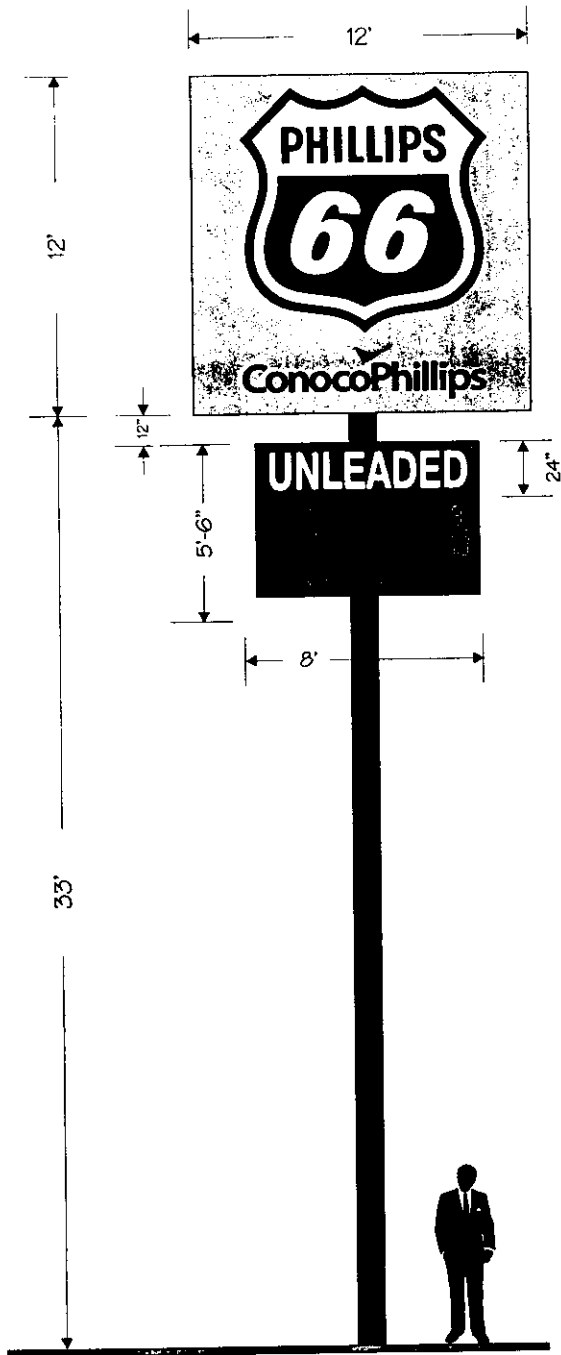
- 1) Impact on existing uses in surrounding areas: The immediate area is freeway frontage that is zoned for commercial uses. Increasing the permitted height of the sign should not adversely impact the existing uses since the increase in sign height is minor.
- 2) Compatibility with existing or permitted uses on abutting sites: Ground signs are typically located in commercial areas along freeways and increasing the sign height by 20 feet should not reduce the compatibility of the sign with existing or permitted uses on abutting sites.

★ Existing sign

⊗ Proposed 45' OAH sign

1" = 60'





TOP CABINET: 36" WIDE BODY.
 FACES: TRANSLUCENT VINYL FLEX MATERIAL
 ILLUMINATION: METAL HALIDE

POLE: 12" PAINTED BLACK.

BOTTOM SIGN: (1) DAKTRONICS LED GAS PRICE DISPLAY UNIT (D/F)
 MODEL # DF-1024-36-R-2V
 DIMENSIONS: 5'6" X 8' X 8"

METALL SITE:

KELLOGG & TYLER
 WICHITA, KS
 TODD BRENDMOEN
 733-9056

Approved By _____ Date _____ Marketing Approval _____

Please review this drawing carefully.
 By signing this you verify the accuracy of all graphics shown with respect to sizes and content. The specifications are correct and represent our order requirements exactly.