

EMERALD BAY LIFT STATION ADDITION

Wichita, Sedgwick County, Kansas

FINAL TRACING REC'D

5-31-06
(SUB 2006-16)

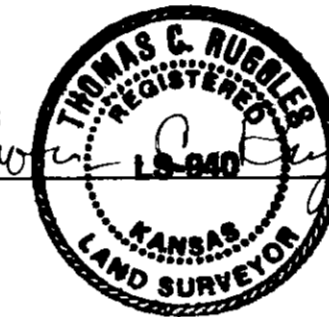
FILE COPY

State of Kansas)
Sedgwick County) SS

We, Ruggles & Bohm, P.A., Land Surveyors in aforesaid county and state, do hereby certify that, under the supervision of the undersigned, we have surveyed and platted "EMERALD BAY LIFT STATION ADDITION", Wichita, Sedgwick County, Kansas, and that the accompanying plat is a true and correct exhibit of the property surveyed, described as follows:

That part of the N1/2 of the NE1/4 of Sec. 2, T27S, R1W of the 6th P.M., Sedgwick County, Kansas, described as commencing at the S.E. corner of said N1/2; thence S89°33'23"W along the south line of said N1/2, 1559.16 feet to a place of beginning; thence N43°04'36"E, 243.47 feet; thence S46°55'24"E, 103.90 feet; thence S00°26'37"E, 105.00 feet to said south line; thence S89°33'23"W along said south line, 243.00 feet to the place of beginning.

Ruggles & Bohm, P.A.



Thomas C. Ruggles
Land Surveyor

Know all men by these presents that we, the undersigned, have caused the land described in the surveyor's certificate to be platted into a Lot and a Block to be known as "EMERALD BAY LIFT STATION ADDITION", Wichita, Sedgwick County, Kansas. Access Controls as indicated are hereby granted to the appropriate governing body. A drainage plan has been developed for this plat; the property shall remain at established grades, or as modified with the approval of the City Engineer, and unobstructed to allow for the conveyance of storm water.

City of Wichita

Carlos Mayans
Mayor

State of Kansas)
Sedgwick County) SS

The foregoing instrument acknowledged before me, this _____ day of _____, 2006, by Carlos Mayans, Mayor, on behalf of the City of Wichita.

Notary Public

My appointment expires _____

This plat of "EMERALD BAY LIFT STATION ADDITION", Wichita, Sedgwick County, Kansas, has been submitted to and approved by the Wichita-Sedgwick County Metropolitan Area Planning Commission, Wichita, Kansas.

Dated this _____ day of _____, 2006.

Wichita-Sedgwick County Metropolitan Area Planning Commission

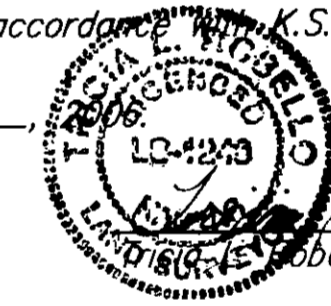
Harold L. Warner, Jr.
Chair
John L. Schlegel
Secretary

This plat approved and all dedications shown hereon accepted by the City Council of the City of Wichita, Kansas, this _____ day of _____, 2006.

At the Direction of the City Council

Carlos Mayans
Mayor
Karen Sublett
City Clerk

Reviewed in accordance with K.S.A. 58-2005 on this 19th day of May, 2006.



Deputy County Surveyor
Sedgwick County Kansas

Entered on transfer record this _____ day of _____, 2006.

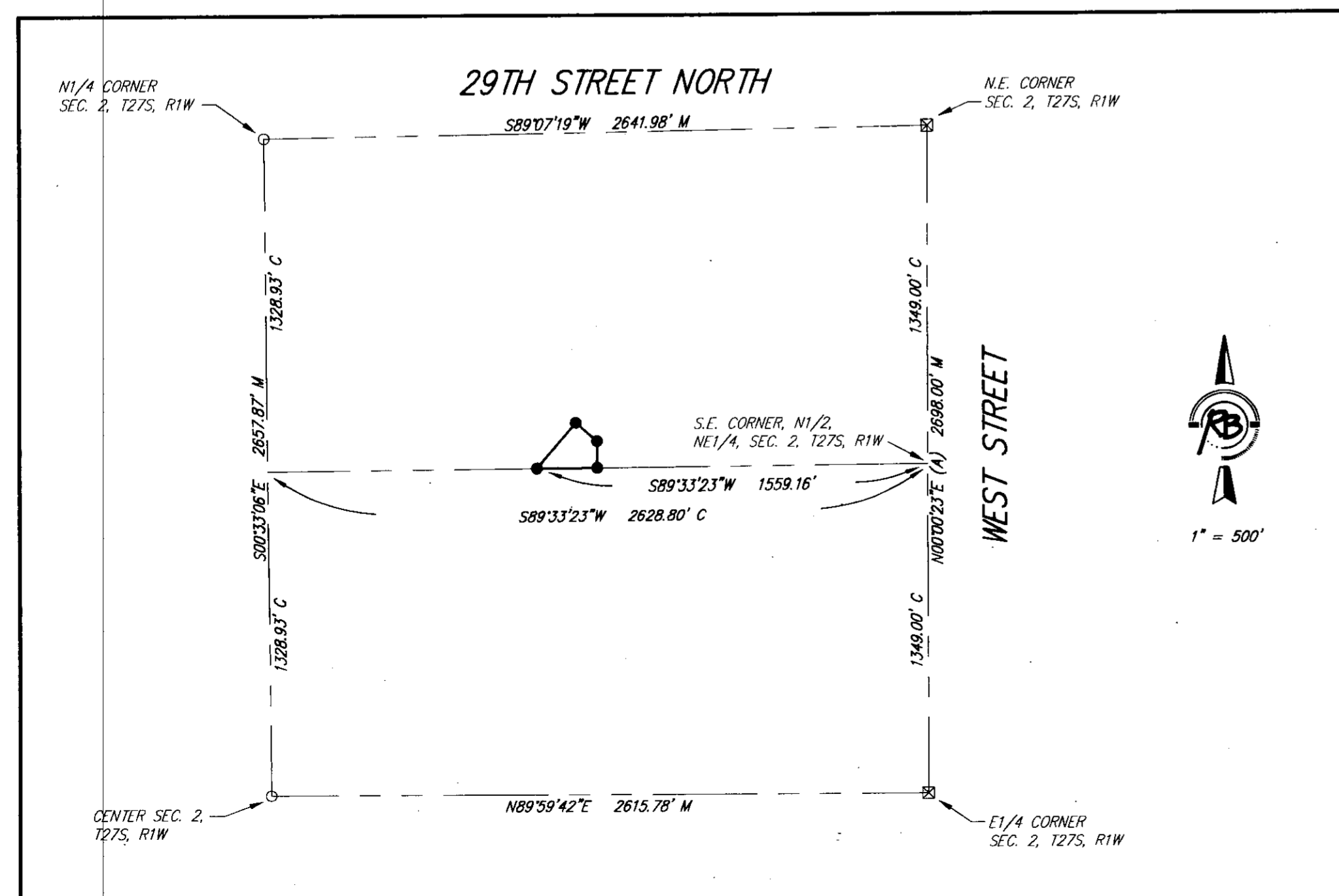
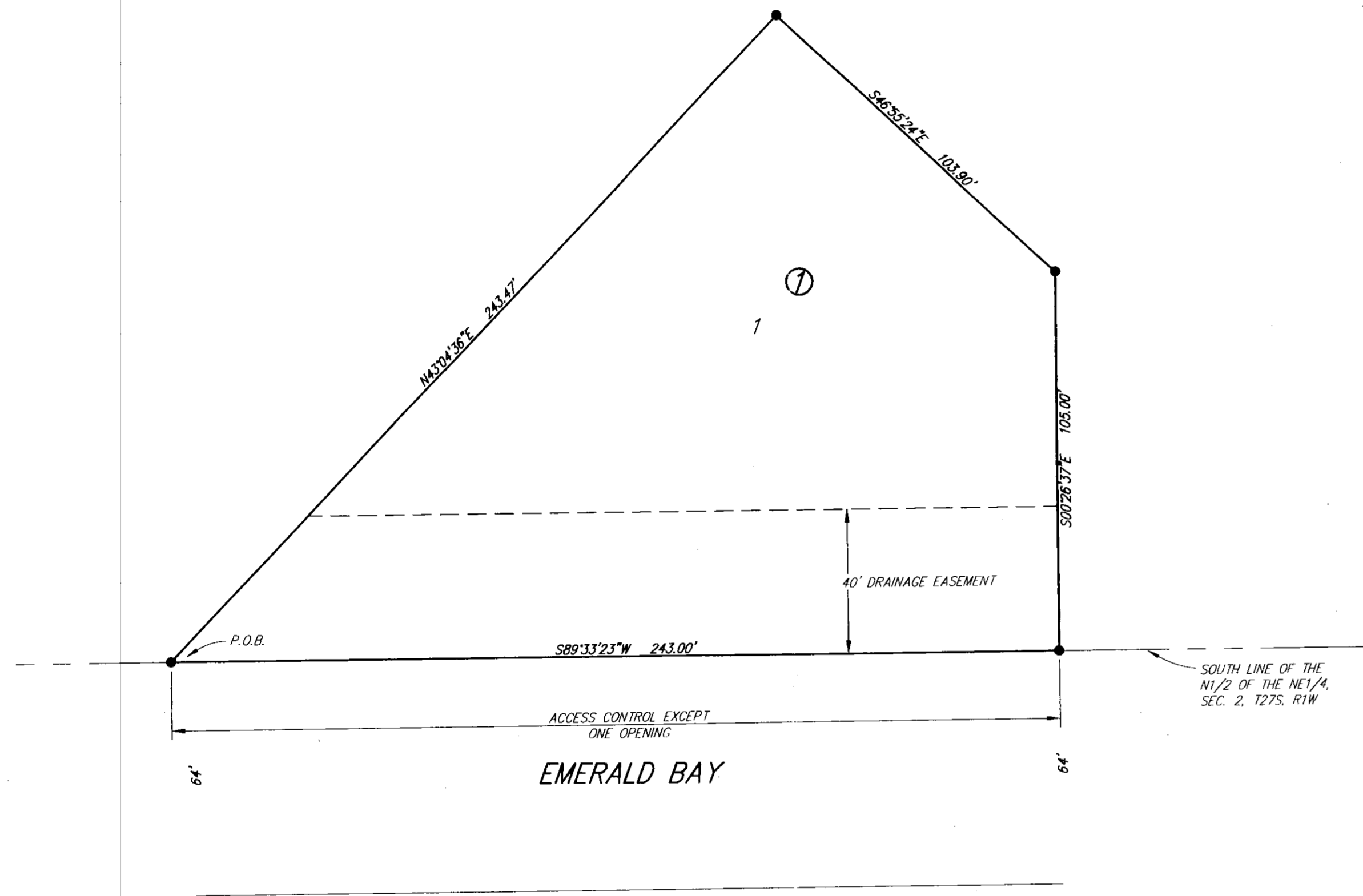
Don Brace
County Clerk

State of Kansas)
Sedgwick County) SS

This is to certify that this plat has been filed for record in the office of the Register of Deeds, this _____ day of _____, 2006, at _____ o'clock _____ M, and is duly recorded.

Bill Meek
Register of Deeds

Tonya Buckingham
Deputy



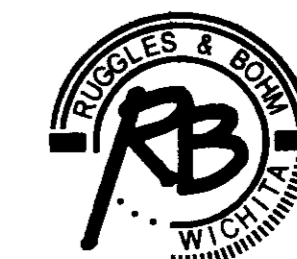
SETBACK LINES PER ZONING REGULATIONS

M = Measured
C = Calculated
A = Assumed

SURVEY MARKER LEGEND

- 1/2" IRON PIPE
- ⊗ RAILROAD SPIKE
- 5/8" REBAR W/RUGGLES & BOHM CAP (SET)

BENCH MARK: CITY OF WICHITA BRASS DISK TOP OF HEADWALL OF R.C.B.C UNDER WEST STREET, NORTH OF 29TH ST. NORTH ON EAST SIDE OF WEST ST. ELEV = 1,321.80 M.S.L.



Ruggles & Bohm, P.A.
Engineering, Surveying, Land Planning

DWG FILE: SURVEY BASE
PROJECT NO. 2836P
MAY 17, 2006

924 North Main
Wichita, Kansas 67203
www.rbkansas.com

(316) 264-8008
(316) 264-4621 fax
E-mail: info@rbkansas.com