

FILE COPY
FINAL TRACING REC'D

6-21-06
(SUB 2004-152)

McNEIL ESTATES

Sedgwick County, Kansas.

State of Kansas)
Sedgwick County) SS

We, Ruggles & Bohm, P.A., Land Surveyors in aforesaid county and state, do hereby certify that, under the supervision of the undersigned, we have surveyed and platted "McNEIL ESTATES", Sedgwick County, Kansas, and that the accompanying plat is a true and correct exhibit of the property surveyed, described as follows:

The west 697.71 feet of the south 332.38 feet of the S1/2 of the N1/2 of the SW1/4, Sec. 2, T26S, R2E of the 6th P.M., Sedgwick County, Kansas, EXCEPT the south 25.00 feet thereof.

All public easements and dedications being vacated by virtue of K.S.A. 12-512(b).

Ruggles & Bohm, P.A.

Thomas C. Ruggles
Land Surveyor
Thomas C. Ruggles

Know all men by these presents that we, the undersigned have caused the land described in the surveyor's certificate to be platted into a lot, a block and a street, to be known as "McNEIL ESTATES", Sedgwick County, Kansas. Access Controls are hereby granted to the appropriate governing body as shown. The street is hereby dedicated to and for the use of the public. A drainage plan has been approved for this plat and all drainage easements, rights-of-way or reserves shall remain at established grades, or as modified with the approval of the applicable City or County Engineer, and unobstructed to allow for the conveyance of storm water.

McNeil Enterprises, LC

Mike McNeil
President
Mike McNeil

State of Kansas)
Sedgwick County) SS

The foregoing instrument acknowledged before me, this 21st day of February, 2006, by Mike McNeil, President on behalf of McNeil Enterprises, LC.

MILDRED E. FRANZ
NOTARY PUBLIC
STATE OF KANSAS

Mildred E. Franz
Notary Public
Mildred E. Franz

My appointment expires 02-18-2007

This plat of "McNEIL ESTATES", Sedgwick County, Kansas, has been submitted to and approved by the Wichita-Sedgwick County Metropolitan Area Planning Commission, Wichita, Kansas.
Dated this _____ day of _____, 2006.

Wichita-Sedgwick County Metropolitan Area Planning Commission

Chair
Harold L. Warner, Jr.

Secretary
John L. Schlegel

This plat is approved and all dedications shown hereon, if any, accepted by the Board of County Commissioners of Sedgwick County, Kansas, this _____ day of _____, 2006.

Chairman
Ben Sciortino

ATTEST:

County Clerk
Don Brace

Reviewed in accordance with K.S.A. 58-2005 on this _____ day of _____, 2006.

Deputy County Surveyor
Tricia L. Robello, LS #1246

Entered on transfer record this _____ day of _____, 2006.

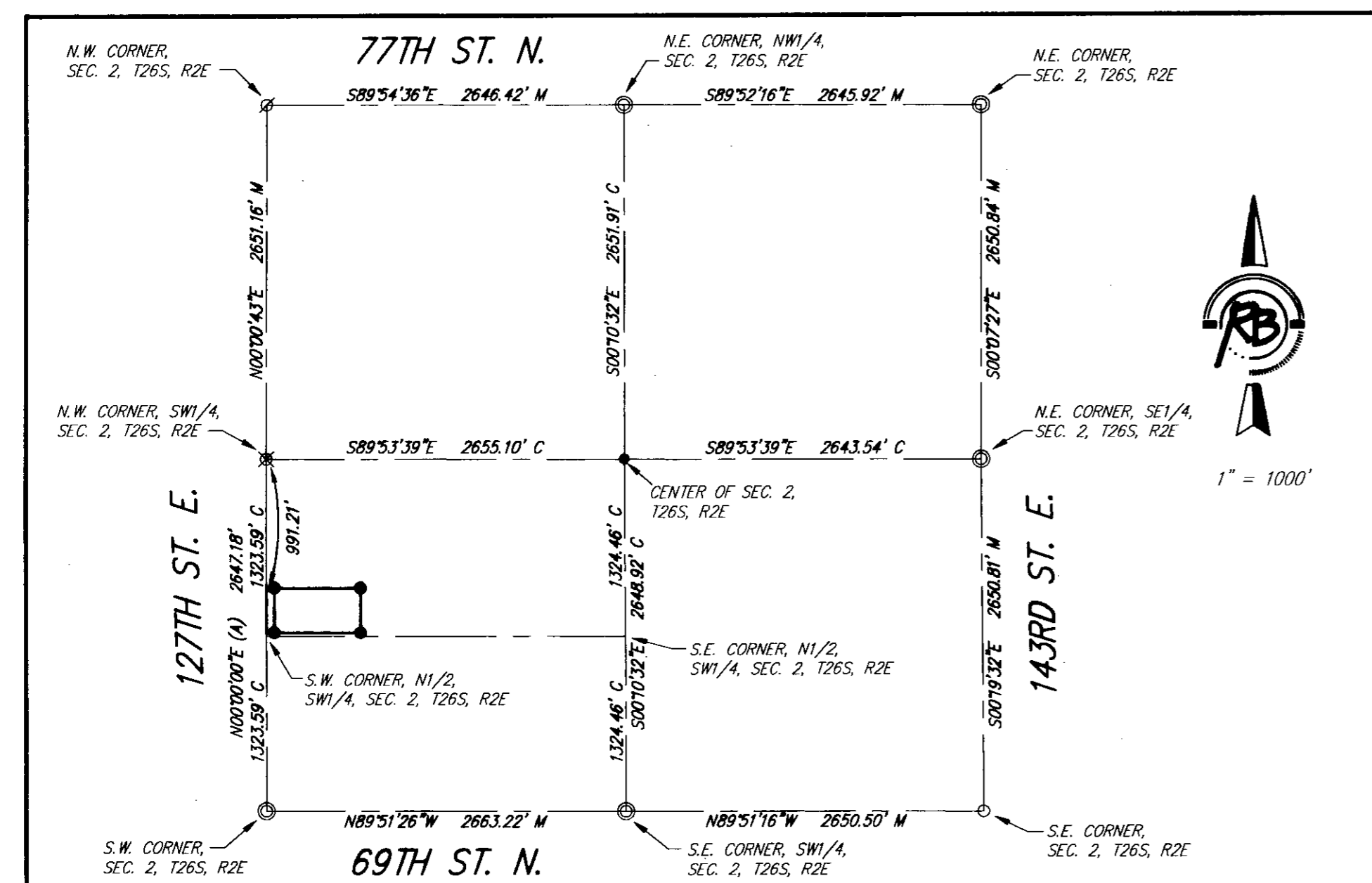
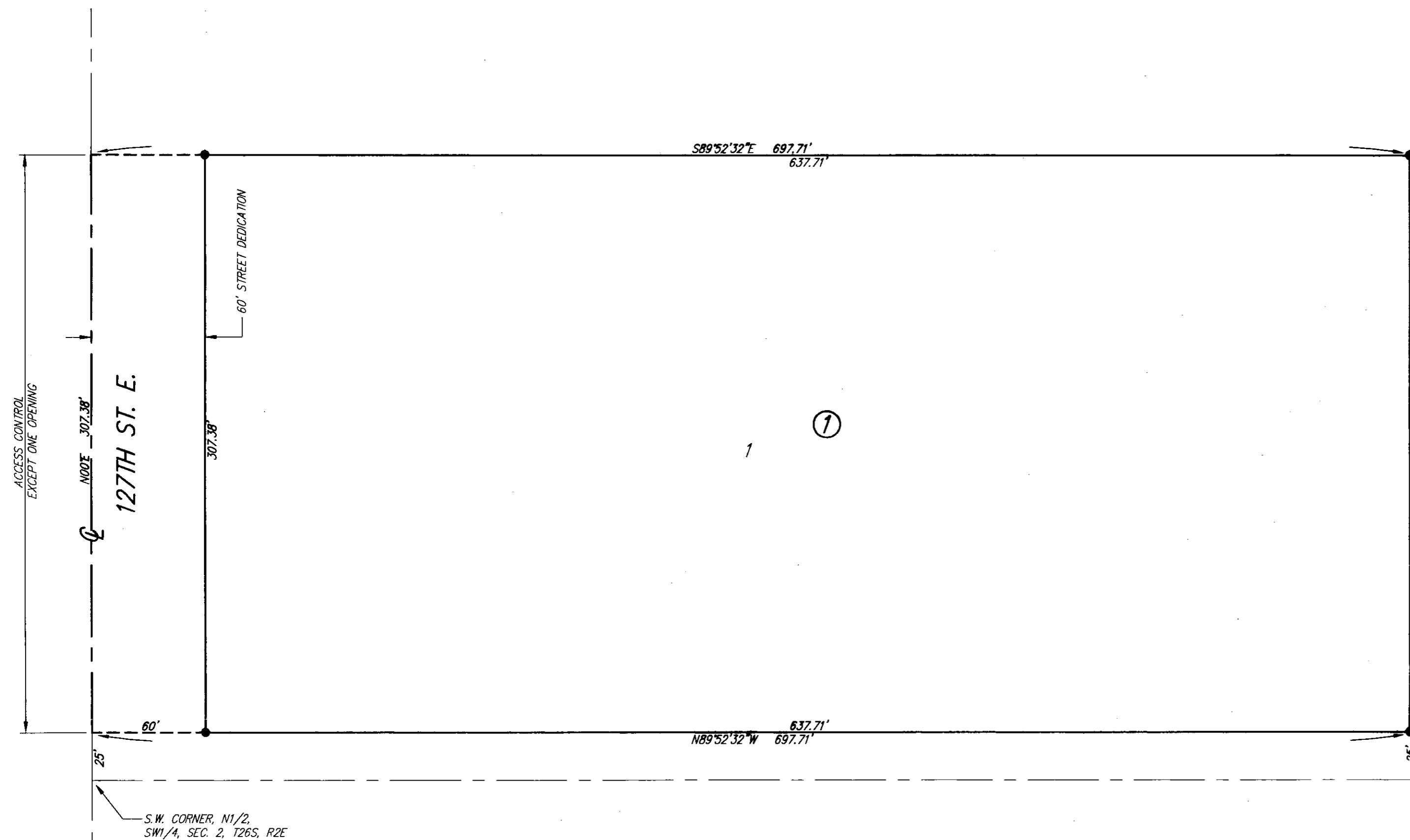
County Clerk
Don Brace

State of Kansas)
Sedgwick County) SS

This is to certify that this plat has been filed for record in the office of the Register of Deeds, this _____ day of _____, 2006, at _____ o'clock _____ M., and is duly recorded.

Register of Deeds
Bill Meek

Deputy
Tonya Buckingham



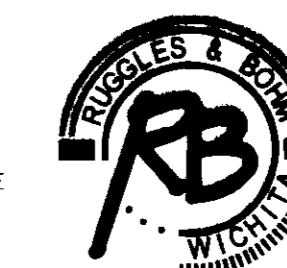
1" = 50'

1" = 1000'

- SURVEY MARKER LEGEND
- 1/2" IRON PIPE (FOUND)
 - ⊙ 3/4" IRON PIPE (FOUND)
 - ⊗ 1/2" REBAR W/CAP (FOUND)
 - ⊗ 3/4" IRON PIPE W/BAUGHMAN CAP (FOUND)
 - 5/8" REBAR W/RUGGLES & BOHM CAP (SET)

BENCHMARK: R.R. SPIKE IN WEST FACE OF POWER POLE 25' E. & 116' N. OF THE S.W. CORNER, N1/2, SW1/4, SEC. 2, T26S, R2E. ELEV.=1383.94 (NAD 27)

SETBACKS PER ZONING REGULATIONS



Ruggles & Bohm, P.A.

Engineering, Surveying, Land Planning

924 North Main (316) 264-8008
Wichita, Kansas 67203 (316) 264-4821 fax
www.rtkansas.com E-mail: info@rtkansas.com

DWG FILE: SURVEY BASE
PROJECT NO. 2548P
JANUARY 30, 2006