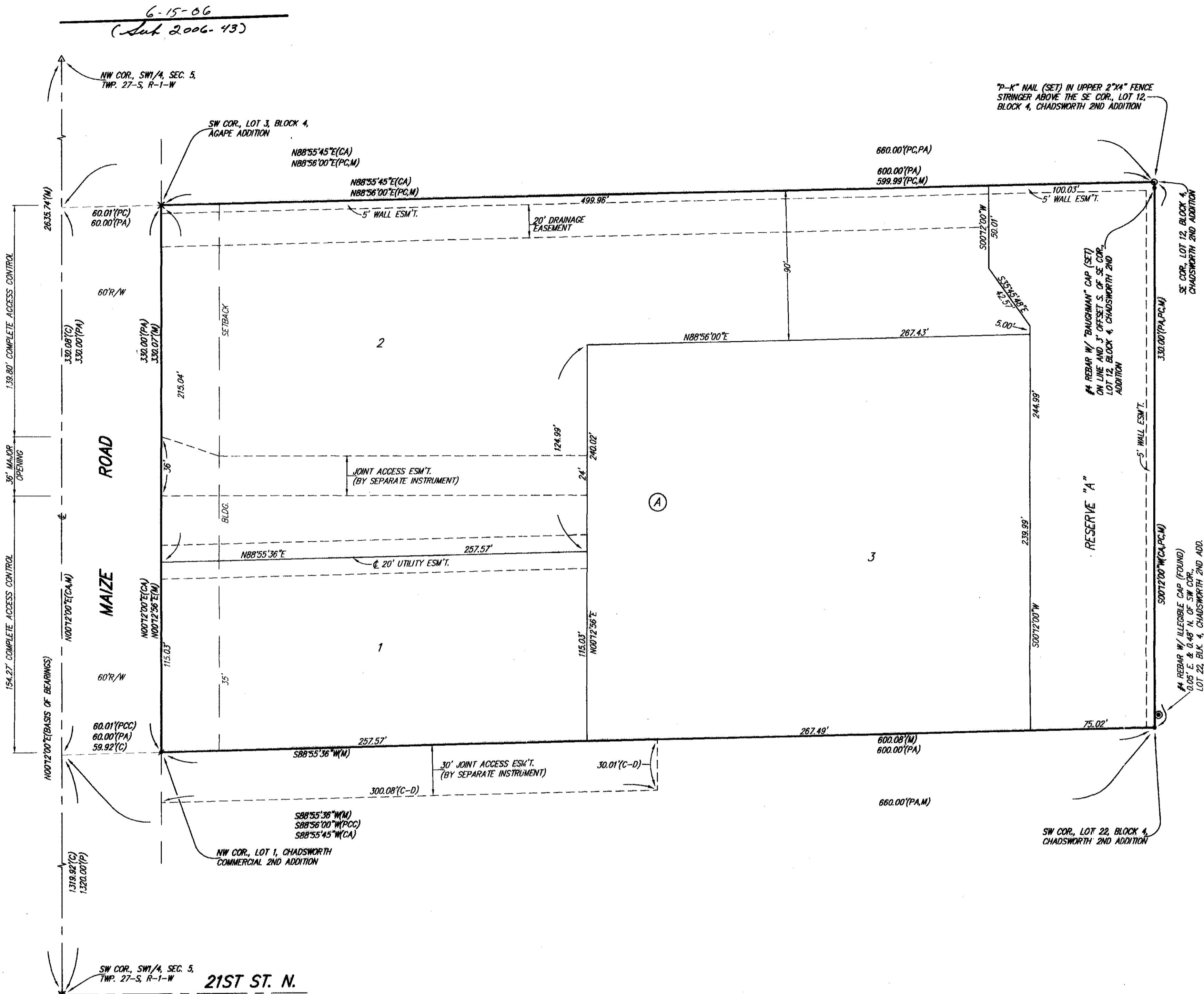


# E.S. DEVELOPMENT MIDWEST COMMERCIAL ADDITION

## WICHITA, SEDGWICK COUNTY, KANSAS

FINAL TRACING REC'D FILE COPY



LOT	BLOCK	ELEVATION
2, 3	A	1353.0

BENCHMARK:  
CITY OF WICHITA DISC - MAIZE RD. & STERLING  
(2400 BLOCK N.), TOP OF CURB, WEST END OF  
MEDIAN ON E. OF STERLING.  
61' E. OF E. OF MAIZE RD.  
ELEV. = 1353.57 NGVD29

SMALL RAILROAD SPIKE IN E. FACE OF POWER  
POLE, 34.6' S. & 6.9' W. OF THE NW COR. OF  
LOT 2, BLOCK A  
ELEV. = 1351.99 NGVD29

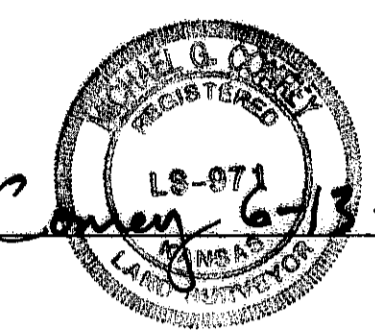
NOTE:  
ADDITIONAL BUILDING SETBACK REQUIREMENTS  
PER COMMUNITY UNIT PLAN OF-283 ON FILE  
WITH THE CITY OF WICHITA METROPOLITAN  
AREA PLANNING DEPARTMENT.

State of Kansas) SS We, Baughman Company, P.A., Surveyors in  
Sedgwick County) do hereby certify that we have surveyed and  
atforesaid county and state do hereby certify that we have surveyed and  
platted "E.S. DEVELOPMENT MIDWEST COMMERCIAL ADDITION", Wichita,  
Sedgwick County, Kansas and that the accompanying plat is a true and  
correct exhibit of the property surveyed, described as and being a replat  
of all of Lot 1, Block A, Agape Addition, Sedgwick County, Kansas,  
together with all of vacated 23rd St. N. and Crestline, as originally  
dedicated in said Agape Addition.

Existing public easements and dedications  
being vacated by virtue of K.S.A. 12-512(b).

All being situated in the SW1/4 of Sec. 5, Twp. 27-S,  
R-1-W of the 6th P.M., Sedgwick County, Kansas.

Baughman Company, P.A.



Michael G. Conrey, Surveyor

Know all men by these presents that we,  
the undersigned, have caused the land in the surveyors certificate to be  
platted into Lots, a Block, and a Reserve to be known as "E.S.  
DEVELOPMENT MIDWEST COMMERCIAL ADDITION", Wichita, Sedgwick County,  
Kansas. The utility easement is hereby granted as indicated for the  
construction and maintenance of all public utilities. The drainage  
easement is hereby granted as indicated for drainage purposes. The wall  
easements are hereby granted as indicated for construction and  
maintenance of a private screening wall and utility main lines and service  
lines shall be allowed to cross these easements. Reserve "A" is hereby  
reserved for open space, landscaping, drainage purposes, and screening  
walls as confined to easements. Reserve "A" shall be owned and  
maintained by the lot owners association for the addition. Access  
controls shall be as depicted on the face of the plat and are hereby  
granted to the City of Wichita, Kansas. The permitted opening locations  
shall be as determined by the City Engineer of the City of Wichita, Kansas.  
The Minimum Building Pad Elevations for the lowest opening to the  
structures shall be as indicated on the face of the plat.

Northwest Free Methodist Church, Inc.

Scott Vang, Chairperson of Trustees

State of Kansas) SS The foregoing instrument acknowledged  
Sedgwick County) before me, this 15th day of JUNE, 2006, by Scott Vang,  
Chairperson of Trustees of Northwest Free Methodist Church, Inc., on  
behalf of the corporation.

JUDITH M. TERHUNE, Notary Public  
My App't. Expires 11-7-07

We, the undersigned holders of a mortgage on the  
above described property, do hereby consent to this plat of  
"E.S. DEVELOPMENT MIDWEST COMMERCIAL ADDITION", Wichita, Sedgwick  
County, Kansas.

Peoples Bank & Trust Company, Trustee for the  
Great Plains Annual Conference Indenture

Rodger A. Swanson, Vice-President

State of Kansas) SS The foregoing instrument acknowledged be-  
McPherson County) fore me, this 15th day of JUNE, 2006, by Rodger A. Swanson,  
Vice-President of Peoples Bank & Trust Company, Trustee for the  
Great Plains Annual Conference Indenture, on behalf of the bank.

JUDITH M. TERHUNE, Notary Public  
My App't. Expires 11-7-07

This plat of "E.S. DEVELOPMENT MIDWEST  
COMMERCIAL ADDITION", Wichita, Sedgwick County, Kansas has been  
submitted to and approved by the Wichita-Sedgwick County Metropolitan  
Area Planning Commission, Wichita, Kansas.

Dated this \_\_\_\_\_ day of \_\_\_\_\_, 2006.  
Wichita-Sedgwick County Metropolitan Area Planning Commission

Harold L. Warner, Jr., Chair  
John L. Schlegel, Secretary

This plat approved and all dedications  
shown hereon accepted by the City Council of the City of Wichita,  
Kansas, this \_\_\_\_\_ day of \_\_\_\_\_, 2006.

Carlos Mayans, Mayor  
Karen Sublett, City Clerk

Reviewed in accordance with K.S.A. 58-2005  
on this \_\_\_\_\_ day of \_\_\_\_\_, 2006.

Entered on transfer record this \_\_\_\_\_ day  
of \_\_\_\_\_, 2006.

Don Brace, County Clerk

State of Kansas) SS This is to certify that this plat has been  
Sedgwick County) filed for record in the office of the Register of Deeds, this \_\_\_\_\_ day  
of \_\_\_\_\_, 2006 at \_\_\_\_\_ o'clock \_\_\_\_\_ M.; and is duly recorded.

Bill Meek, Register of Deeds  
Tonya Buckingham, Deputy

