

# SPANGLES ADDITION

WICHITA, SEDGWICK COUNTY, KANSAS

FILE COPY

FINAL TRACING REC'D

8/29/06  
(Sub 2006-62)

State of Kansas) SS  
Sedgwick County)

We, Savoy Company, P.A., Surveyors in aforesaid county and state do hereby certify that, under the supervision of the undersigned, we have surveyed and platted "SPANGLES ADDITION", Wichita, Sedgwick County, Kansas and that the accompanying plat is a true and correct exhibit of the property surveyed, described as:

This plat of "SPANGLES ADDITION", Wichita, Sedgwick County, Kansas, has been submitted to and approved by the Wichita-Sedgwick County Metropolitan Area Planning Commission, Wichita, Kansas.

Dated this \_\_\_\_\_ day of \_\_\_\_\_, 2006.

Wichita-Sedgwick County Metropolitan Area Planning Commission

\_\_\_\_\_  
Harold L. Warner, Jr. Chairman

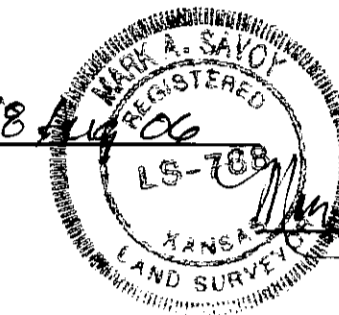
\_\_\_\_\_  
John L. Schiegel Secretary

The north 100 feet of the south 275 feet of the west 160 feet of Lot 17, except the west 10 feet there, dedicated for street, Block 4, Lyncrest Heights an Addition to Wichita, Sedgwick County, Kansas.

All Public easements and dedications being vacated by virtue of K.S.A. 12-512(b).

Savoy Company, P.A.

Date 18 Aug 2006



\_\_\_\_\_  
Mark A. Savoy RLS #788 Surveyor

This plat approved and all dedications shown hereon, accepted by the City Council of the City of Wichita, Kansas, this \_\_\_\_\_ day of \_\_\_\_\_, 2006.

\_\_\_\_\_  
Carlos Mayans Mayor

\_\_\_\_\_  
Karen Sublett City Clerk

Reviewed in accordance with K.S.A. 58-2005 on this \_\_\_\_\_ day of \_\_\_\_\_, 2006.

\_\_\_\_\_  
Tricia L. Robello, LS #1246 Deputy County Surveyor  
Sedgwick County Kansas

Spangles, Inc.

\_\_\_\_\_  
Craig A. Steven, President

Entered on transfer record this \_\_\_\_\_ day of \_\_\_\_\_, 2006.

\_\_\_\_\_  
Don Brace County Clerk

State of Kansas) SS  
Sedgwick County)

The foregoing instrument acknowledged before me, this \_\_\_\_\_ day of \_\_\_\_\_, 2006, by Craig A. Steven, President of Spangles, Inc., on behalf of the corporation.

State of Kansas) SS  
Sedgwick County)

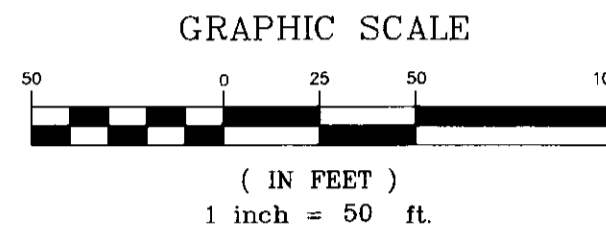
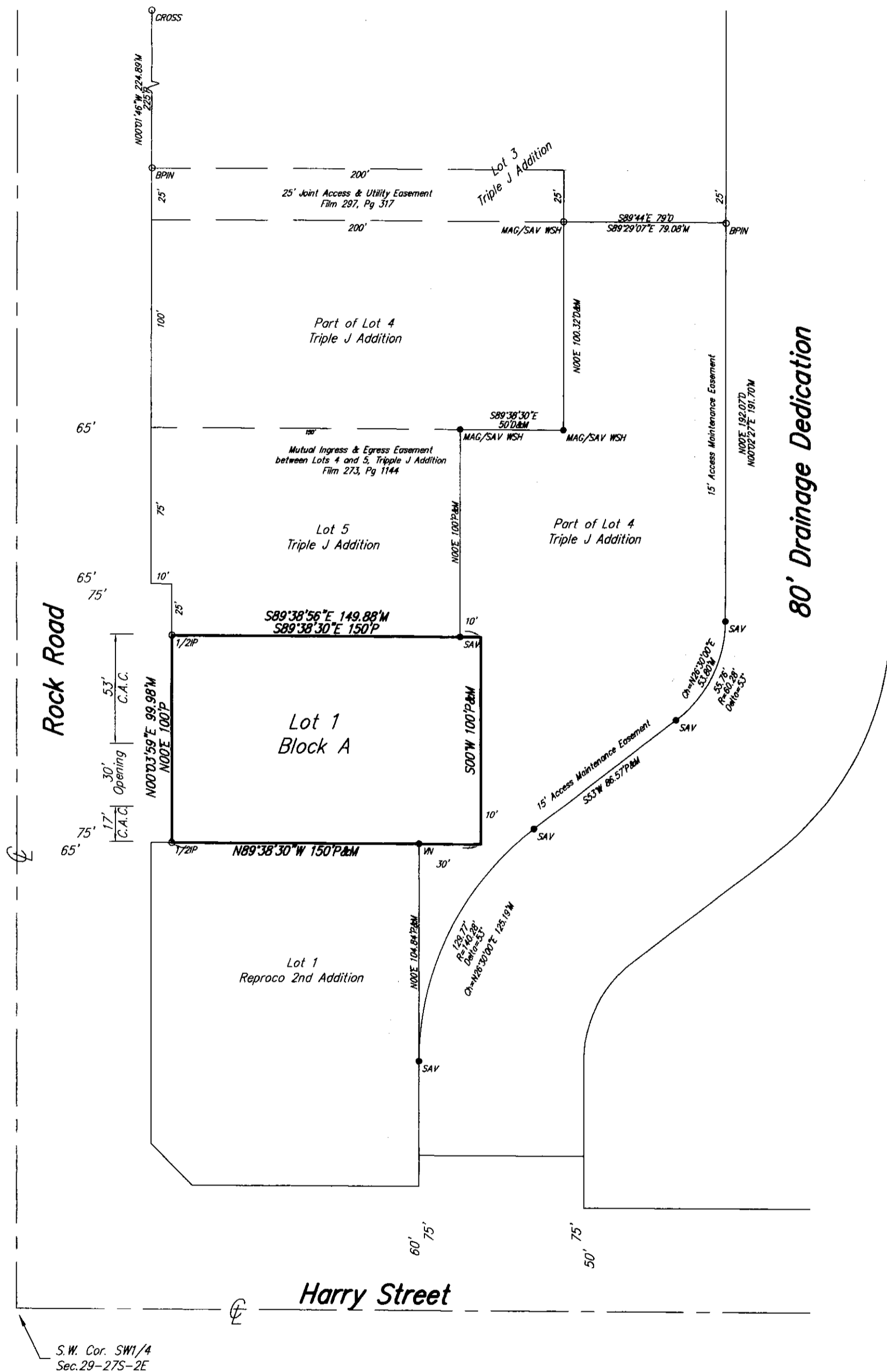
This is to certify that this plat has been filed for record in the office of the Register of Deeds, this \_\_\_\_\_ day of \_\_\_\_\_, 2006, at o'clock \_\_\_\_\_ M: and is duly recorded.

\_\_\_\_\_  
Bill Meek Register of Deeds

\_\_\_\_\_  
Notary Public

My App't. Exp. \_\_\_\_\_

\_\_\_\_\_  
Tonya Buckingham Deputy



C.A.C. = Complete Access Control

LEGEND:

P = Platted

M = Measured

1/2" P = 1/2" IRON PIPE (FOUND)

BRN P = 1/2" REBAR W/BAUGHMAN CAP (FOUND)

CROSS P = CHISELED CROSS (FOUND)

MAG/SAV WSH P = MAG NAIL W/SAVOY WASHER (FOUND)

MAG/SAV WSH P = MAG NAIL W/SAVOY WASHER (SET)

SAV P = 1/2" REBAR W/SAVOY CAP (SET)

W P = CHISELED V-NOTCH (SET)