

9/5/06

FILE COPY

# BELLECHASE

An Addition to Wichita, Sedgwick County, Kansas


State of Kansas)  
Sedgwick County) SS

We, Ruggles & Bohm, P.A., Land Surveyors in aforesaid county and state, do hereby certify that, under the supervision of the undersigned, we have surveyed and platted "BELLECHASE", An Addition to Wichita, Sedgwick County, Kansas, and that the accompanying plat is a true and correct exhibit of the property surveyed, described as follows:

### LEGAL DESCRIPTION:


That part of the N1/2 of the SW1/4 of Sec. 26, T27S, R2E of the 6th P.M., Sedgwick County, Kansas described as beginning at the N.W. corner of said SW1/4; thence N88°45'24"E 2640.50' M; thence S01°02'26"E, parallel with the west line of said SW1/4, 393.00 feet; thence S05°21'38"E, 64.18 feet; thence S43°03'34"E, 207.71 feet; thence N88°45'24"E, parallel with said north line, 213.37 feet; thence S03°08'58"E, 503.21 feet; thence S06°33'00"E, 64.27 feet; thence S01°17'44"E, 130.00 feet to the south line of said N1/2; thence S88°42'16"W along said south line, 775.52 feet to the S.W. corner of said N1/2; thence N01°02'26"W along the west line of said SW1/4, 1329.64 feet to the place of beginning.

Ruggles & Bohm, P.A.

  
Thomas C. Ruggles  
Land Surveyor

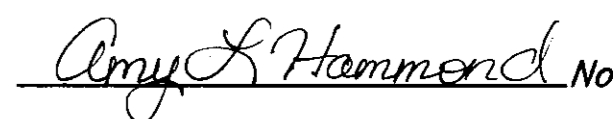
We, the undersigned, holders of a mortgage on the above described property, do hereby consent to this plat of "BELLECHASE", An Addition to Wichita, Sedgwick County, Kansas, this 24<sup>th</sup> day of May, 2006.

Garden Plain State Bank

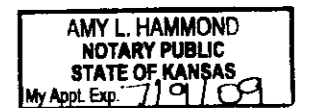
  
Patrick F. Walden  
President

State of Kansas)  
Sedgwick County) SS

The foregoing instrument acknowledged before me, this 24<sup>th</sup> day of May, 2006, by Patrick F. Walden, President of Garden Plain State Bank on behalf of the Bank.

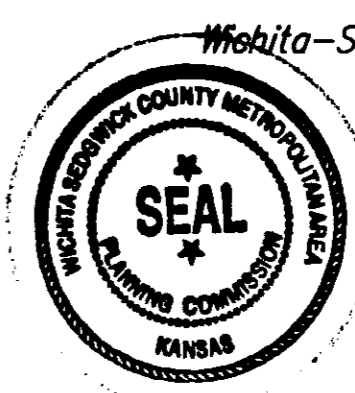
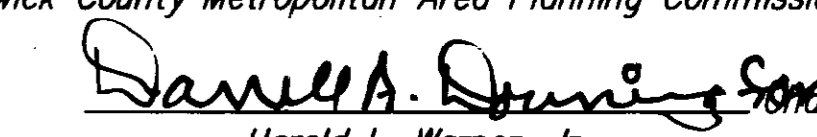
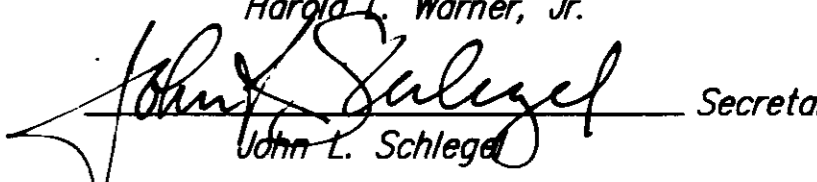
  
Amy L. Hammond, Notary Public

My appointment expires 7/9/09



This plat of "BELLECHASE", An Addition to Wichita, Sedgwick County, Kansas, has been submitted to and approved by the Wichita-Sedgwick County Metropolitan Area Planning Commission, Wichita, Kansas.

Dated this 2nd day of March, 2006.


Wichita-Sedgwick County Metropolitan Area Planning Commission  
  
  
Darrell A. Dunning, Chair  
Harold L. Warner, Jr.  
  
John L. Schlegel, Secretary  
John L. Schlegel

This plat approved and all dedications shown hereon accepted by the City Council of the City of Wichita, Kansas, this \_\_\_ day of \_\_\_, 2006.

At the Direction of the City Council

\_\_\_\_\_  
Mayor  
Carlos Mayans  
City Clerk  
Karen Sublett

Reviewed in accordance with K.S.A. 58-2005 on this 13<sup>th</sup> day of June, 2006.

  
\_\_\_\_\_  
Deputy County Surveyor  
Robella Sedgwick County Kansas  
Robella

Entered on transfer record this \_\_\_ day of \_\_\_, 2006.

\_\_\_\_\_  
County Clerk  
Don Brace

State of Kansas)  
Sedgwick County) SS

This is to certify that this plat has been filed for record in the office of the Register of Deeds, this \_\_\_ day of \_\_\_, 2006, at \_\_\_ o'clock \_\_\_ M, and is duly recorded.

\_\_\_\_\_  
Register of Deeds  
Bill Meek

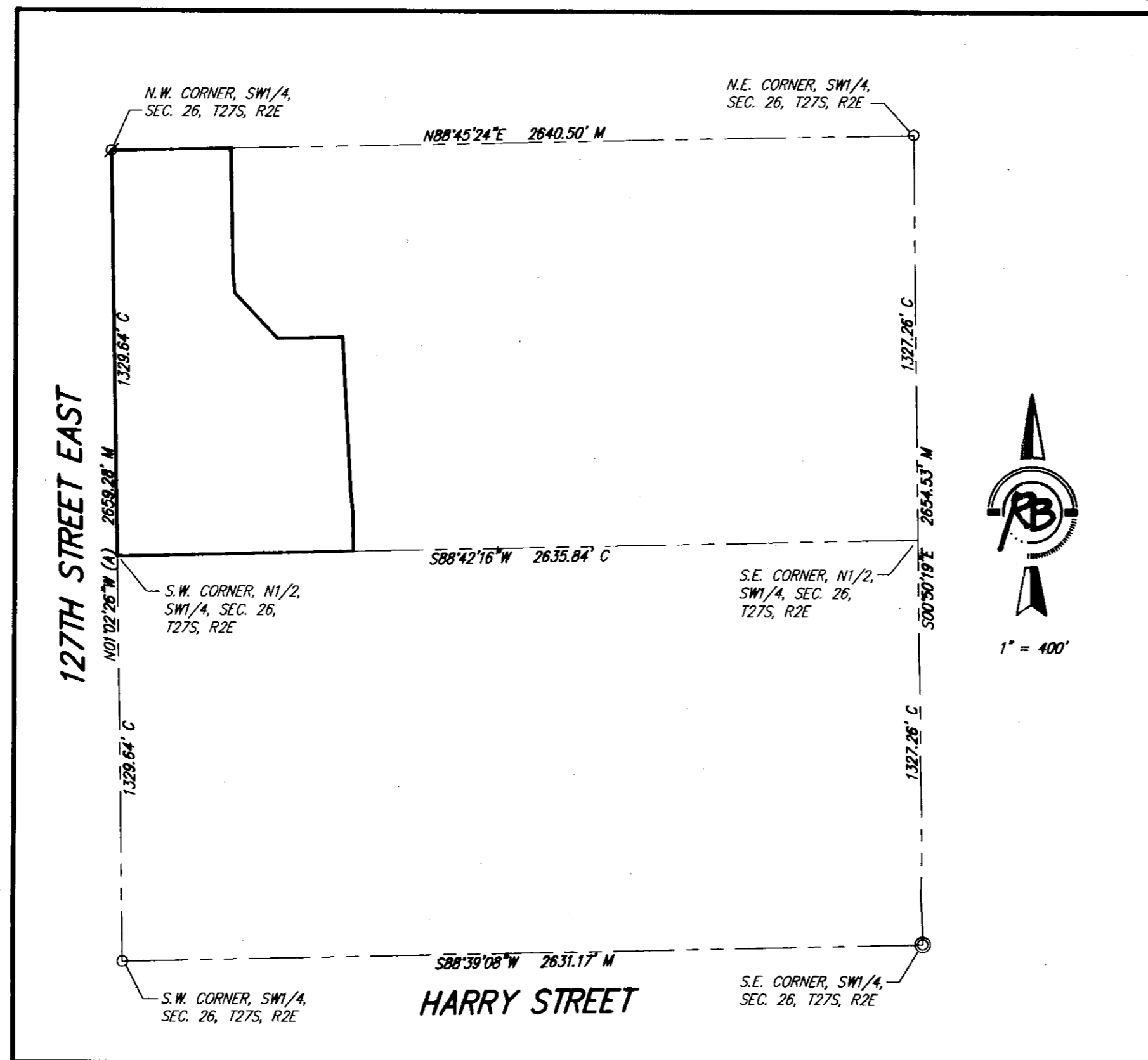
\_\_\_\_\_  
Deputy  
Tonya Buckingham

State of Kansas)  
Sedgwick County) SS

The foregoing instrument acknowledged before me, this 23rd day of May, 2006, by Stephen G. Miller, President, on behalf of BELLECHASE DEVELOPMENT L.L.C.

  
Mildred E. Franz  
Notary Public

My appointment expires 02-13-2007



SETBACK LINES PER ZONING REGULATIONS

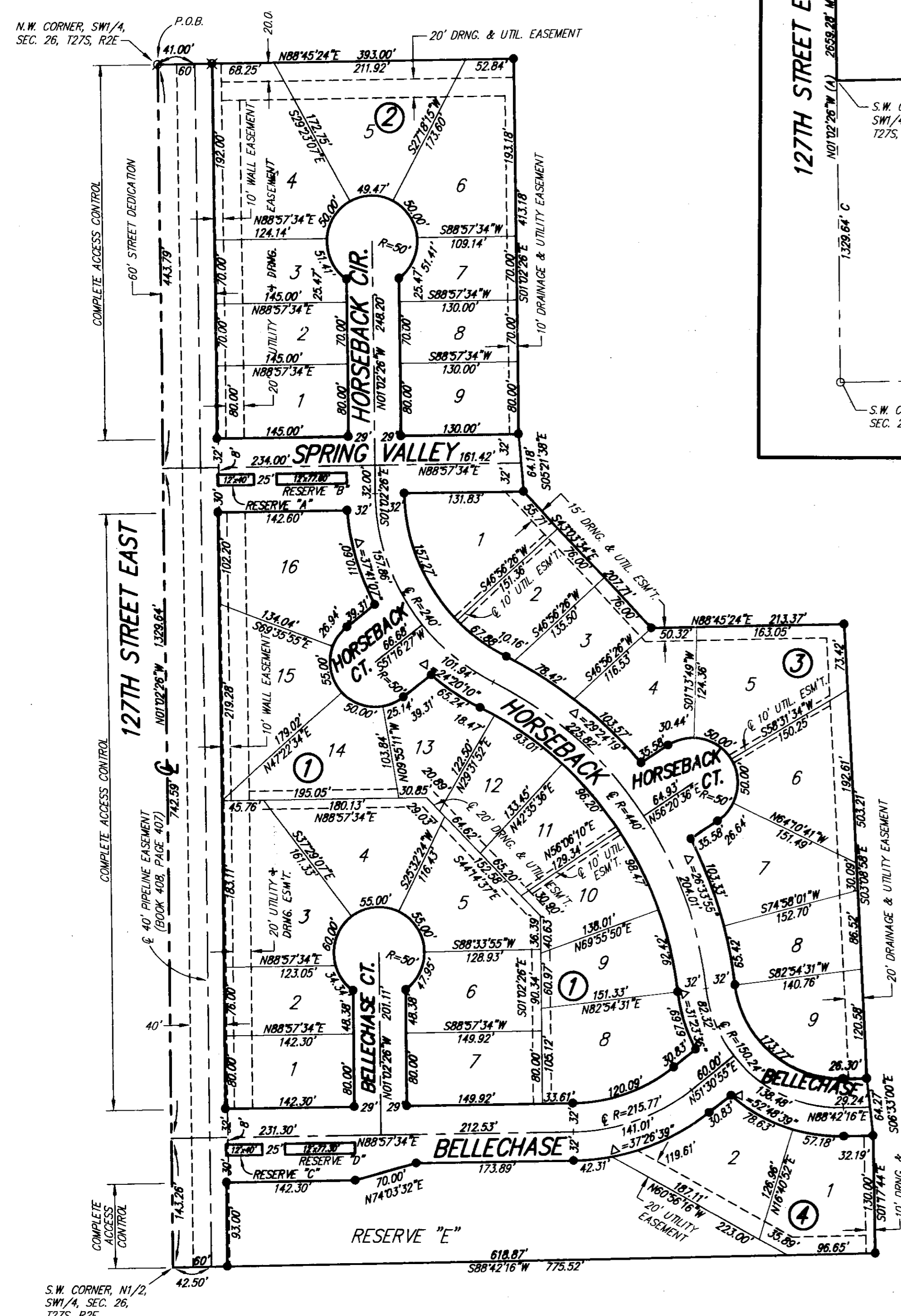
C = Calculated  
M = Measured  
A = Assumed

### SURVEY MARKER LEGEND

- ..... 1/2" IRON PIPE (FOUND)
- ..... 3/4" IRON PIPE (FOUND)
- ..... 5/8" REBAR W/ ARMSTRONG CAP (FOUND)
- ..... 5/8" REBAR W/ ANEC CAP (FOUND)
- ..... 5/8" REBAR W/ RUGGLES & BOHM CAP (SET)

BENCH MARK: RAILROAD SPIKE IN SOUTH FACE OF POWER POLE 79' SOUTH SOUTHEAST OF THE WEST QUARTER CORNER OF SEC. 26, T27S, R2E. ELEV. = 1337.46 (NGVD)

BLOCK	LOT NO.	ELEVATION (N.G.V.D.)
4	1, 2	1318.0



Ruggles & Bohm, P.A.  
Engineering, Surveying, Land Planning  
924 North Main  
Wichita, Kansas 67203  
www.rbkansas.com  
(316) 264-8008  
(316) 264-4621 fax  
E-mail: info@rbkansas.com

DWG FILE: SURVEY BASE  
PROJECT NO. 2668P  
MAY 22, 2006