

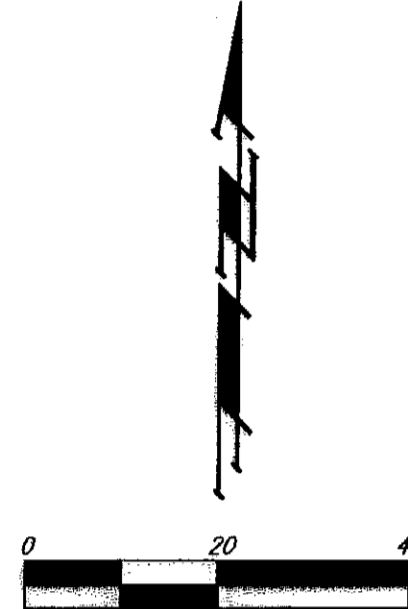
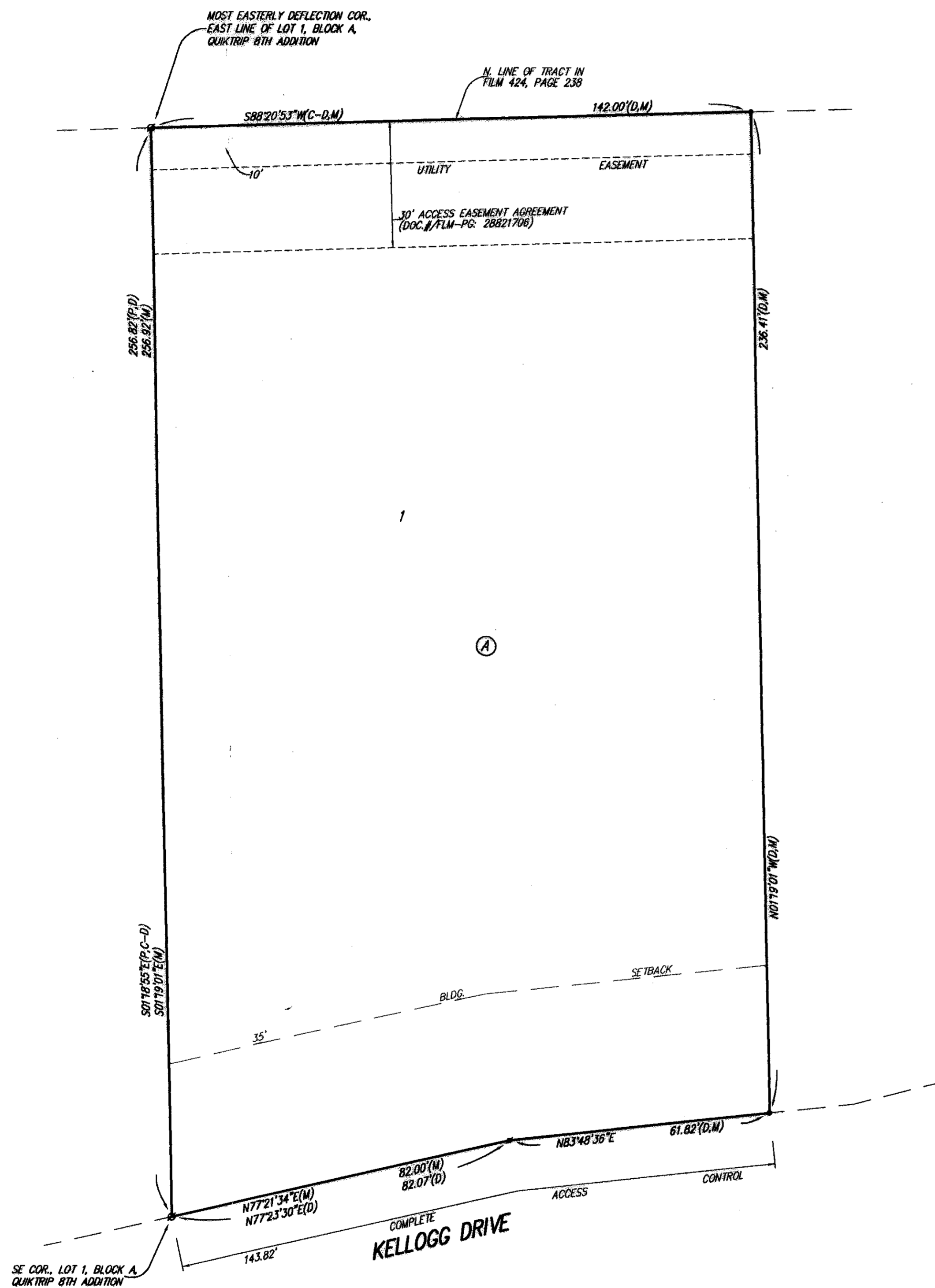
QUIKTRIP 10TH ADDITION

WICHITA, SEDGWICK COUNTY, KANSAS

FILE COPY

FINAL TRACING REC'D

10/18/06
Sub 2006-60



NOTE:
AN ACCESS EASEMENT FOR CROSS LOT CIRCULATION WILL BE ESTABLISHED BETWEEN THIS PLAT AND LOT 1, BLOCK A, QUIKTRIP 8TH ADDITION.

- = #4 REBAR W/ "BAUGHMAN CAP" (SET)
- ⊙ = #5 REBAR W/ "MKEC" CAP (FOUND)
- = #4 REBAR W/ "BAUGHMAN CAP" (FOUND)

(M) = MEASURED
(P) = PLATTED
(D) = DESCRIBED
(C-D) = CALCULATED PER DESCRIBED INFO.

NOTE:
MUTUAL ACCESS EASEMENT, (FILM 2225, PAGE 471), AFFECTING ALL OF LOT 1, BLOCK A, QUIKTRIP 10TH ADDITION AND OTHER TRACTS.
AMENDMENT TO MUTUAL ACCESS AGREEMENT, (DOC.#/FLM-PG: 28812341), RELEASING AND TERMINATING CURB CUT ACCESS ESTABLISHED IN FILM 2225 AT PAGE 471.

State of Kansas) SS We, Baughman Company, P.A., Surveyors in Sedgwick County) do hereby certify that we have surveyed and platted "QUIKTRIP 10TH ADDITION", Wichita, Sedgwick County, Kansas and that the accompanying plat is a true and correct exhibit of the property surveyed, described as a tract in the SW1/4 of Sec. 29, Twp 27-S, R-1-W of the 6th P.M. Sedgwick County, Kansas, further described as follows: Commencing at the SE corner of Lot 18, Verda Vista, Sedgwick County, Kansas; thence on an assumed bearing of N01°18'15"W, along the east line of said Verda Vista, a distance of 207.09 feet, more or less, to a point 24.99 feet north of the SE corner of Lot 16 in said Verda Vista, said point being a point on the south line of Lot 1, Block A, Quiktrip 8th Addition, Wichita Sedgwick County, Kansas; thence N77°23'30"E, 95.86 feet to the southeast corner of said Lot 1 and for a point of beginning; thence continuing N77°23'30"E, 82.07 feet; thence N83°48'36"E, 61.82 feet; thence N01°19'01"W, parallel with the west line of said SW1/4, 236.41 feet to a point on the north line of a tract described on the deed filed of record in the Sedgwick County, Register of Deeds Office on Film 424 at Page 238; thence westerly along the north line of said tract, 142.00 feet to the most easterly deflection corner in the east line of Lot 1, Block A, in said Quiktrip 8th Addition; thence southerly along the east line of said Lot 1, 256.82 feet to the point of beginning.

Existing public easements and dedications being vacated by virtue of K.S.A. 12-512(b),
Baughman Company, P.A.

Michael G. Conrey 8-10-05-2006 Surveyor
Michael G. Conrey
SEDGWICK COUNTY REGISTERED LAND SURVEYOR

Know all men by these presents that we, the undersigned, have caused the land in the surveyors certificate to be platted into a Lot and a Block to be known as "QUIKTRIP 10TH ADDITION", Wichita, Sedgwick County, Kansas. The utility easement is hereby granted as indicated for the construction and maintenance of all public utilities. All abutters rights of access to or from Kellogg Drive over and across the south line of Lot 1, Block A, are hereby granted to the City of Wichita, Kansas.

Quiktrip West, Incorporated, a Kansas corporation
James D. Marchesano Vice-President of Store Development
James D. Marchesano

Oklahoma State of Tulsa) County) SS The foregoing instrument acknowledged before me, this 13th day of October, 2006, by James D. Marchesano, Vice-President of Store Development for Quiktrip West, Incorporated, a Kansas corporation, on behalf of the corporation.

Kristy Elliott, Notary Public
My App't. Exp. 5/18/2009

This plat of "QUIKTRIP 10TH ADDITION", Wichita, Sedgwick County, Kansas has been submitted to and approved by the Wichita-Sedgwick County Metropolitan Area Planning Commission, Wichita, Kansas.
Dated this _____ day of _____, 2006,
Wichita-Sedgwick County Metropolitan Area Planning Commission

_____, Chair
Harold L. Warner, Jr.
_____, Secretary
John L. Schlegel

This plat approved and all dedications shown hereon accepted by the City Council of the City of Wichita, Kansas, this _____ day of _____, 2006.

_____, Mayor
Carlos Mayans
_____, City Clerk
Karen Sublett

Reviewed in accordance with K.S.A. 58-2005 on this _____ day of _____, 2006.

Tricia L. Robello, L.S. #1246
Deputy County Surveyor
Sedgwick County, Kansas

Entered on transfer record this _____ day of _____, 2006.

_____, County Clerk
Dan Brace

State of Kansas) SS This is to certify that this plat has been filed for record in the office of the Register of Deeds, this _____ day of _____, 2006 at _____ o'clock _____ M., and is duly recorded.

_____, Register of Deeds
Bill Meek

_____, Deputy
Tonya Buckingham