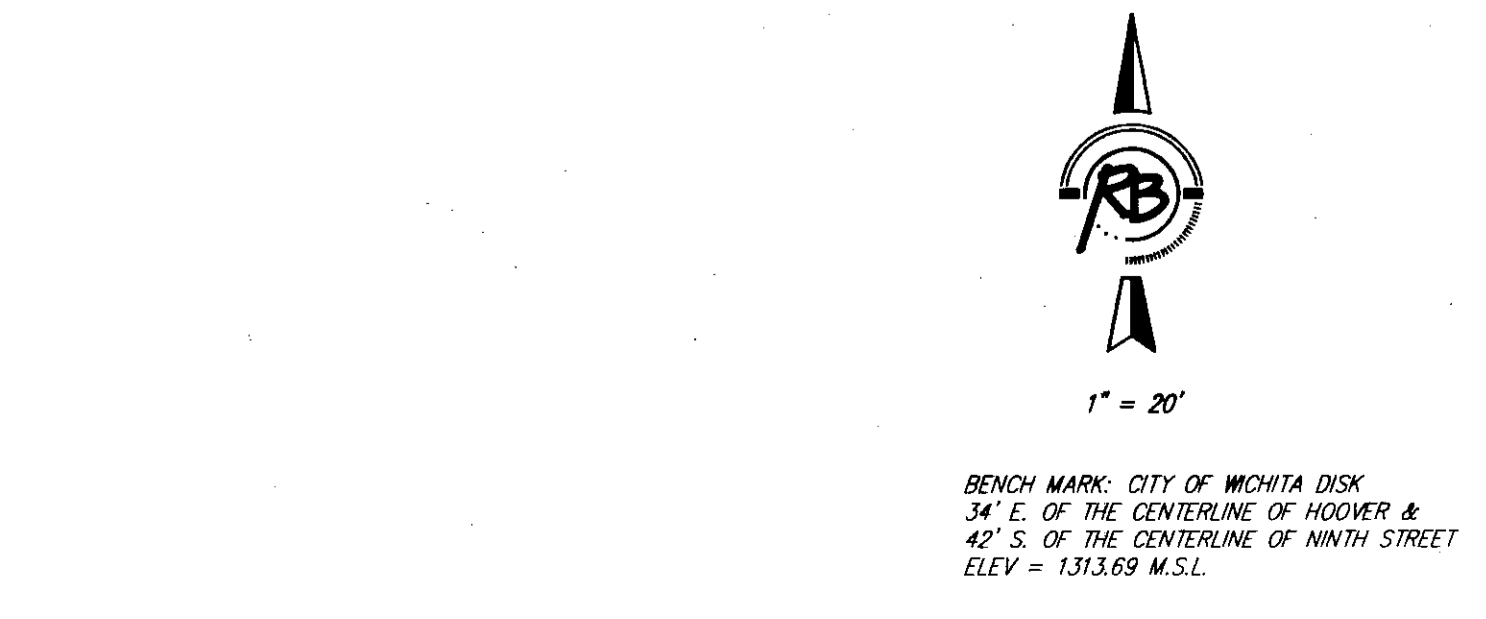
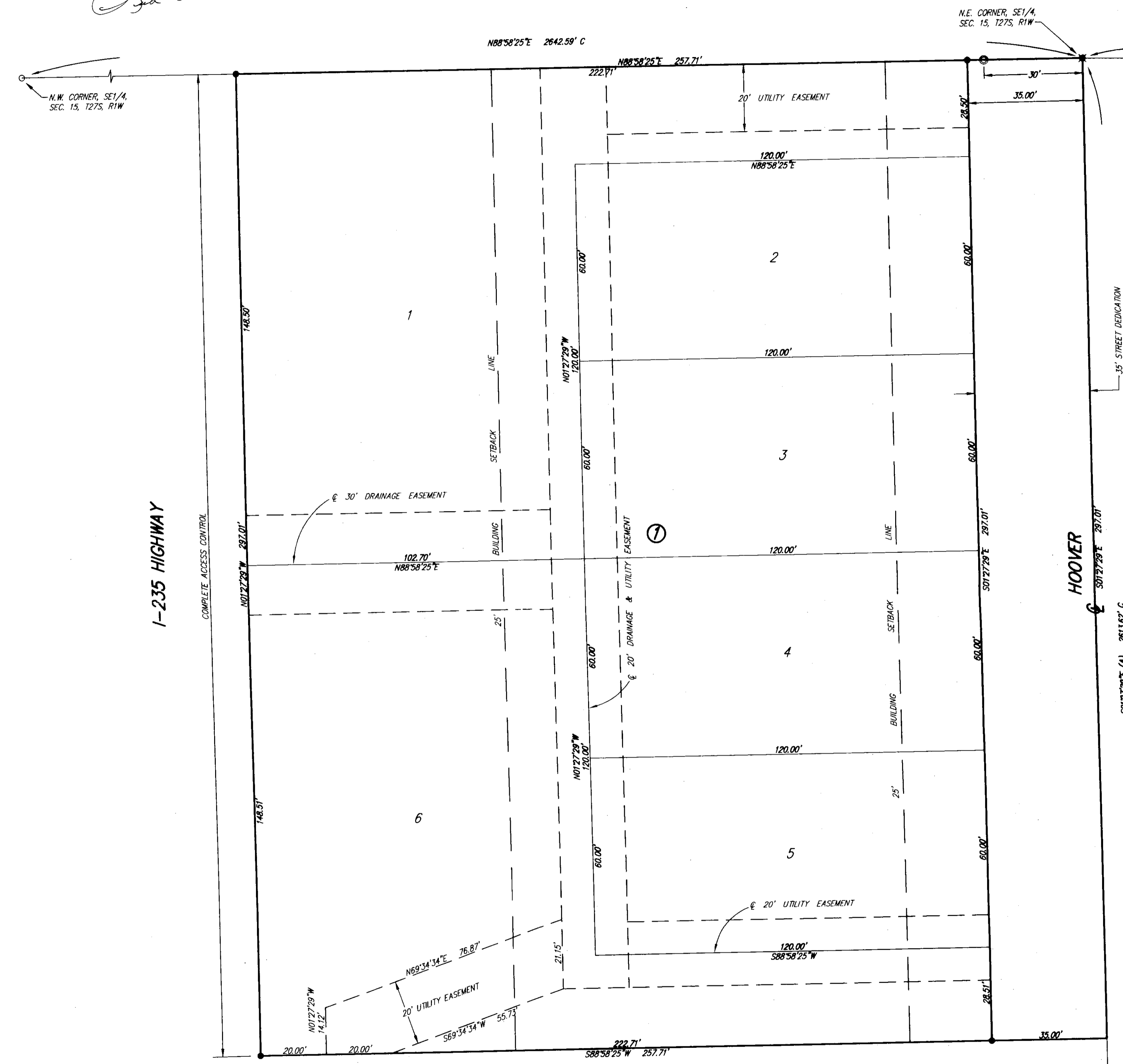


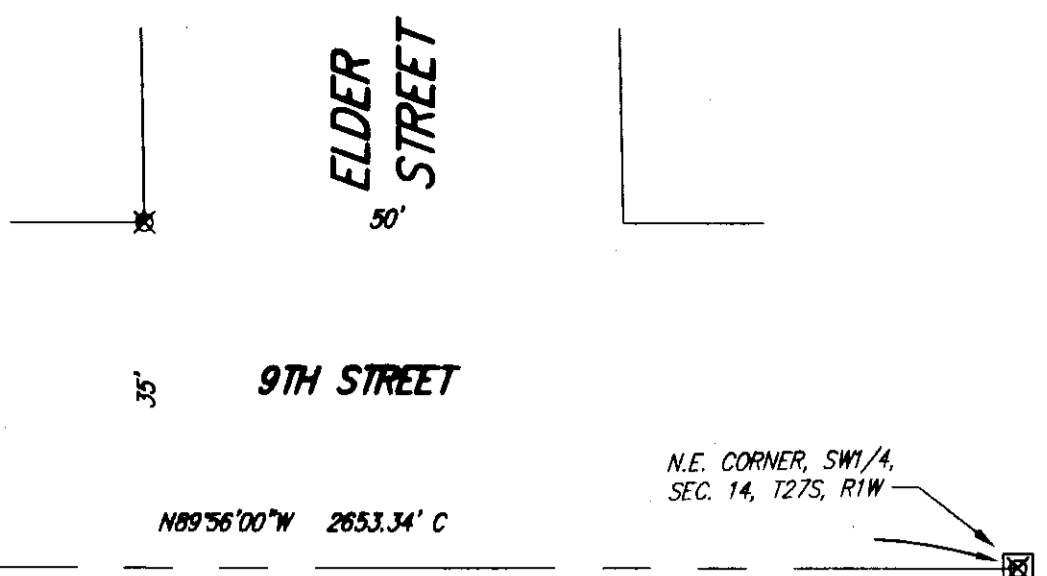
# ARMSTRONG ESTATES

Wichita, Sedgwick County, Kansas

10/31/06  
2006-72



- SETBACK LINES PER ZONING REGULATIONS
- M = Measured
  - D = Described
  - (A) = Assumed
  - CP = Calculated from plotted
- SURVEY MARKER LEGEND
- 1/2" REBAR IN 4"x4" CONCRETE BLOCK (FOUND)
  - 3/4" IRON PIPE (FOUND)
  - 3/4" IRON PIPE IN THIMBLE (FOUND)
  - 3/4" BAR (FOUND)
  - 1" BAR IN THIMBLE (FOUND)
  - 1/2" REBAR W/RUGGLES & BOHM CAP (SET)
  - 5/8" REBAR W/RUGGLES & BOHM CAP (SET)



State of Kansas) SS  
Sedgwick County)

We, Ruggles & Bohm, P.A., Land Surveyors in aforesaid county and state, do hereby certify that, under the supervision of the undersigned, we have surveyed and platted "ARMSTRONG ESTATES", Wichita, Sedgwick County, Kansas, and that the accompanying plat is a true and correct exhibit of the property surveyed, described as follows:

The east 257.7 feet of the north 297 feet of the SE1/4 of Sec. 15, T27S, R1W of the 6th P.M., Sedgwick County, Kansas.

All public easements and dedications are hereby vacated by virtue of K.S.A. 12-512(b).

Ruggles & Bohm, P.A.

*Thomas C. Ruggles*  
Thomas C. Ruggles  
Land Surveyor

Know all men by these presents that we, the undersigned, have caused the land described in the surveyor's certificate to be platted into Lots, a Block and a Street, to be known as "ARMSTRONG ESTATES", Wichita, Sedgwick County, Kansas. Access Controls as indicated are hereby granted to the appropriate governing body. The street is hereby dedicated to and for the use of the public. Utility Easements are hereby granted for the construction and maintenance of all public utilities. Drainage Easements are hereby granted to the public as indicated for drainage purposes. A drainage plan has been developed for this plat; the property shall remain at established grades, or as modified with the approval of the City Engineer, and unobstructed to allow for the conveyance of storm water.

An Avigational Easement is hereby granted to the public authority authorized by law to own and operate public-owned airports in Sedgwick County, Kansas, for the use of "Navigable Airspace" as defined by the Federal Aviation Act of 1958, over all of the accompanying plat. By virtue of this easement, the grantors, for and on behalf of themselves and all successors in interest to any and all of the real property above described, waives as to the public authority only any and all claims for damage of any kind whatsoever incurred as a result of aircraft using the "Navigable Airspace" granted herein. This easement does not grant or convey any surface use rights, nor is it to be construed to grant any right to private persons or corporations. "Navigable Airspace" means air space above the minimum altitudes of flight prescribed by regulations issued under the Federal Aviation Act of 1958, Section 101 (24) 49 U.S. Code 1301, and shall include air space needed to insure safety in take-off and landing of aircraft.

*Joe L. Applegate*  
Joe L. Applegate

*Stephany J. Applegate*  
Stephany J. Applegate

*Robert J. Armstrong*  
Robert J. Armstrong

*Dana L. Armstrong*  
Dana L. Armstrong

State of Kansas) SS  
Sedgwick County)

The foregoing instrument acknowledged before me, this 26<sup>th</sup> day of October, 2006, by Joe. L. and Stephany J. Applegate, husband and wife.

*Michael E. Franz*  
Michael E. Franz  
Notary Public  
State of Kansas

My appointment expires 02-13-2007

State of Kansas) SS  
Sedgwick County)

The foregoing instrument acknowledged before me, this 26<sup>th</sup> day of October, 2006, by Robert J. and Dana L. Armstrong, husband and wife.

*Michael E. Franz*  
Michael E. Franz  
Notary Public  
State of Kansas

My appointment expires 02-13-2007

This plat of "ARMSTRONG ESTATES", Wichita, Sedgwick County, Kansas, has been submitted to and approved by the Wichita-Sedgwick County Metropolitan Area Planning Commission, Wichita, Kansas.

Dated this \_\_\_ day of \_\_\_, 2006.

Wichita-Sedgwick County Metropolitan Area Planning Commission

Chair  
Darrell A. Downing

Secretary  
Don Anderson

This plat approved and all dedications shown hereon accepted by the City Council of the City of Wichita, Kansas, this \_\_\_ day of \_\_\_, 2006.

At the Direction of the City Council

Mayor  
Carlos Moyans

City Clerk  
Karen Sublett

Reviewed in accordance with K.S.A. 58-2005 on this 30<sup>th</sup> day of October, 2006.

*Tracie L. Lutz*  
Tracie L. Lutz  
Deputy County Surveyor  
Sedgwick County Kansas  
LS #1246

Entered on transfer record this \_\_\_ day of \_\_\_, 2006.

County Clerk  
Don Brace

State of Kansas) SS  
Sedgwick County)

This is to certify that this plat has been filed for record in the office of the Register of Deeds, this \_\_\_ day of \_\_\_, 2006, at \_\_\_ o'clock \_\_\_ M., and is duly recorded.

Register of Deeds  
Bill Meek

Deputy  
Tonya Buckingham