

STATE OF KANSAS, COUNTY OF SEDGWICK: ss.

I, Kenny E. Hill, being a duly licensed Land Surveyor in said County and State, do hereby certify that I have been in responsible charge of surveying and platting the "STONERIDGE ESTATES" an Addition to Sedgwick County, Kansas, being described as follows:

A tract of land in the East Half of the Northeast Quarter of Section 16, Township 26 South, Range 1 West of the 6th P.M., Sedgwick County, Kansas, described as follows:

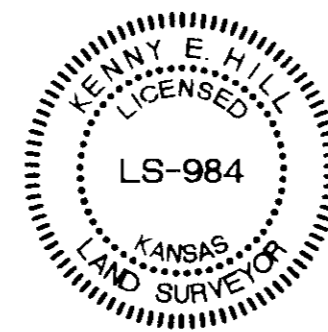
Beginning at a point on the East line and 1315.44 feet South of the Northeast corner of Section 16, thence South along the East line 558.93 feet; thence West parallel with the North line of said East Half of the Northeast Quarter of Section 16, 1324.65 feet more or less to the West line of said East Half of the Northeast Quarter of said Section 16, thence North along said West line 558.93 feet; thence East 1325.5 feet more or less to the point of beginning, subject to road right-of-way.

The accompanying plat is a true and correct exhibit of property surveyed.

Dated this 14th day of December, 2006.

Poe and Associates, Inc.

Kenny E. Hill, L.S. 984
Vice President



Scale in Feet

LEGEND

Iron Pin

KNOW ALL MEN BY THESE PRESENTS:

That we, the undersigned, have caused the land described in the Surveyor's Certificate to be platted into Lots, a Block, a Reserve and Streets. The streets are hereby dedicated to and for the use of the public. Easements are hereby granted as indicated for the construction and maintenance of a wall, drainage and utilities. Reserve A is reserved for drainage, a pond, wading path, swimming pool and related facilities, and common open space. The reserve shall be owned and maintained by a home owners association. The Temporary Cul-de-sac Easement shall become null and void upon the platting of the adjacent property and having a street connecting thereto. A drainage plan has been developed for this addition. All drainage easements and rights-of-way shall remain at established grades or as modified with the approval of the applicable City or County Engineer, and remain unobstructed to allow for the conveyance of stormwater. All abutters' rights of access to or from Ridge Road over and across the East line of the addition, except for the north 40 feet thereof and except for one opening to Lot 9 and all abutters' rights of access to or from Hidden Acres over and across the East 75' of Lot 8 are hereby granted to the appropriate governing body.

Frank J. McCormick

Kim M. McCormick

STATE OF KANSAS, COUNTY OF SEDGWICK: ss.

This instrument was acknowledged before me on this, _____ day of _____, 2006, by Frank J. McCormick and Kim M. McCormick, husband and wife.

My Appointment Expires: _____

Notary Public

KNOW ALL MEN BY THESE PRESENTS: ss

That, First National Bank of Southern Kansas, holders of a mortgage on the property described in the surveyor's certificate do hereby consent to the plat of Stoneridge Estates.

First National Bank of Southern Kansas

Rex W. Reynolds, President

STATE OF KANSAS, COUNTY OF SEDGWICK: ss.

This instrument was acknowledged before me on this, _____ day of _____, 2006, by Rex W. Reynolds, President of First National Bank of Southern Kansas.

Notary Public

My Appointment Expires: _____

This plat of STONERIDGE ESTATES an ADDITION to, Sedgwick County, Kansas has been submitted to and approved by this WICHITA--SEDGWICK COUNTY METROPOLITAN AREA PLANNING COMMISSION.

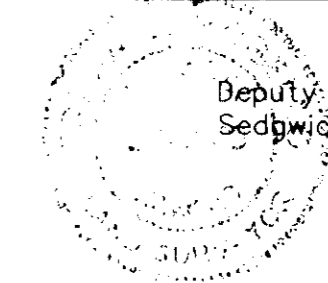
Dated this _____ day of _____, 2007.

WICHITA SEDGWICK COUNTY METROPOLITAN AREA PLANNING COMMISSION

Darrell A. Downing, Chairman

John L. Schlegel, Secretary

Reviewed in accordance with K.S.A. 58-2005 on this _____ day of _____, 2006



Deputy County Surveyor
Sedgwick County, Kansas

Tricia L. Robello, L.S. #1246

This plat approved and all dedications shown hereon accepted by the City Council of the City of Wichita, Kansas, this, _____ day of _____, 2007.

At the Direction of the City Council

Carlos Mayans, Mayor

Karen Sublett, City Clerk

This plat of STONERIDGE ESTATES on addition to Sedgwick County, Kansas has been submitted to and approved by the Board of County Commissioners of Sedgwick County, on this _____ day of _____, 2007.

Ben Sciortino, Chairman

Entered on transfer record this, _____ day of _____, 2007.

Don Brace, County Clerk

This is to certify that this instrument was filed for record in the Register of Deeds Office at _____ A.M.--P.M. on the _____ day of _____, 2007.

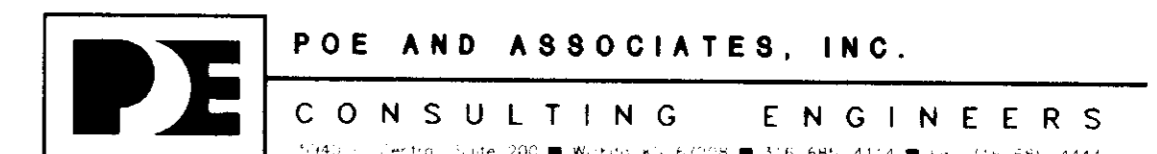
Bill Meek, Register of Deeds

Tonya Buckingham, Deputy

STONERIDGE ESTATES

AN ADDITION TO SEDGWICK COUNTY, KANSAS

FILE COPY



FINAL TRACING REC'D

12/21/06
July 2006-52