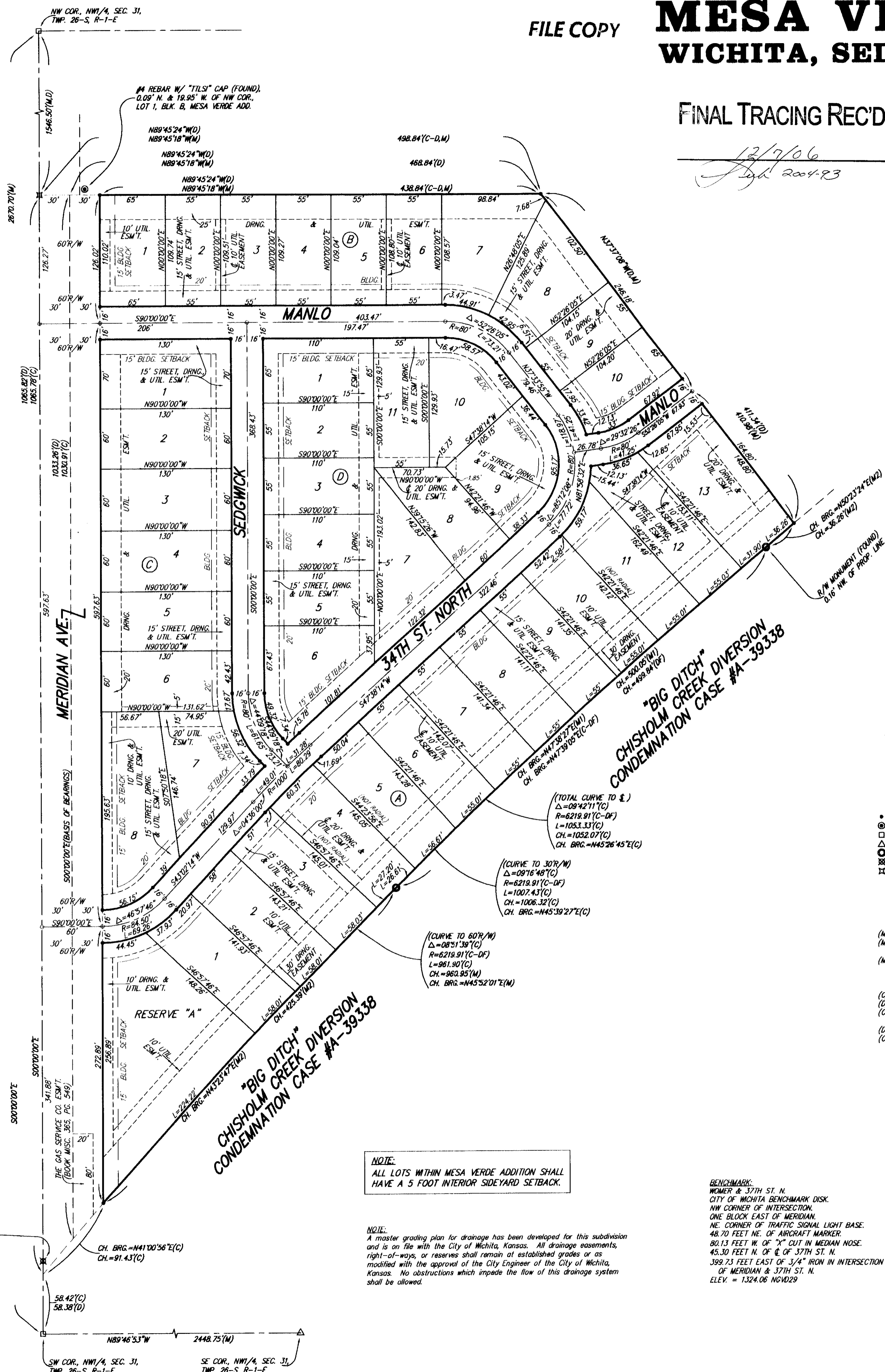


FILE COPY

MESA VERDE ADDITION WICHITA, SEDGWICK COUNTY, KANSAS

FINAL TRACING REC'D



State of Kansas) SS We, Baughman Company, P.A., Surveyors in
Sedgwick County) do hereby certify that we have surveyed and
platted "MESA VERDE ADDITION", Wichita, Sedgwick County, Kansas and
that the accompanying plat is a true and correct exhibit of the
property surveyed, described as part of the NW1/4 of Sec. 31, Twp.
26-S, R-1-E of the 6th P.M., Sedgwick County, Kansas, further
described as follows: Beginning at a point 1546.50 feet south and 30
feet east of the NW corner of said NW1/4; thence south along the east
right-of-way of Meridian Avenue, having an assumed bearing of
S00°00'00"E, a distance of 1033.26 feet to a point on the northwesterly
right-of-way of the Chisholm Creek Diversion as acquired in
Condemnation Case No. A-39338; thence northeasterly along the
northwesterly right-of-way of said Chisholm Creek Diversion, being a
00°55.27' curve to the right, having a central angle of 09°16'48" and a
radius of 6219.91 feet, an arc distance of 1007.43 feet, (having a long
chord distance of 1006.32 feet bearing N45°39'27"E); thence
N37°37'08"W, a distance of 411.34 feet; thence N89°45'24"W, a distance
of 468.84 feet to the point of beginning.

Existing public easements and dedications
being vacated by virtue of K.S.A. 12-512(b).
Baughman Company, P.A.

Michael G. Conroy 12/7/2006, Surveyor
Michael G. Conroy

This plat of "MESA VERDE ADDITION",
Wichita, Sedgwick County, Kansas has been submitted to and approved
by the Wichita-Sedgwick County Metropolitan Area Planning Commission,
Wichita, Kansas.
Dated this _____ day of _____,
Wichita-Sedgwick County Metropolitan Area Planning Commission

_____, Chair
Ronald L. Marnell
_____, Secretary
John L. Schlegel

This plat approved and all dedications
shown hereon accepted by the City Council of the City of Wichita,
Kansas, this _____ day of _____, 2006.

_____, Mayor
Carlos Mayans
_____, City Clerk
Karen Sublett

Know all men by these presents that we,
the undersigned, have caused the land in the surveyors certificate to be
platted into Lots, Blocks, Streets, and a Reserve to be known as "MESA
VERDE ADDITION", Wichita, Sedgwick County, Kansas. The utility easements
are hereby granted as indicated for the construction and maintenance of
all public utilities. The drainage and utility easements are hereby granted
as indicated for drainage purposes and for the construction and
maintenance of all public utilities. The drainage easements are hereby
granted as indicated for drainage purposes. The street, drainage, and
utility easements are hereby granted as indicated for street purposes,
for drainage purposes, and for the construction and maintenance of all public
utilities. The streets are hereby dedicated to and for the use of the
public. Reserve "A" shall hereby reserved for clubhouse and clubhouse
related facilities, recreational areas, open space, landscaping, drainage
purposes, and utilities as confined to easements. Reserve "A" shall be
owned and maintained by the homeowners association for the addition.
The Minimum Building Pad Elevations shall be as indicated on the face of
the plat.

Community Economic Resource Corporation,
a Kansas Non-Profit corporation

Richard E. Lopez
Richard E. Lopez, Chief Executive Officer

Reviewed in accordance with K.S.A. 58-2005
on this _____ day of _____, 2006.

Tricia L. Robello, L.S. #1246
Deputy County Surveyor
Sedgwick County, Kansas

Entered on transfer record this _____ day
of _____, 2006.

Don Brace, County Clerk

State of Kansas) SS This is to certify that this plat has been
Sedgwick County) filed for record in the office of the Register of Deeds, this _____ day
of _____, 2006 at _____ o'clock _____ M, and is duly recorded.

Bill Meek, Register of Deeds

Linda Kizzire, Deputy

State of Kansas) SS The foregoing instrument acknowledged before
County) me, this _____ day of _____, 2006, by Richard E. Lopez,
Chief Executive Officer of Community Economic Resource Corporation, a
Kansas Non-Profit corporation, on behalf of the corporation.

JUDITH M. TERHUNE
Notary Public, State of Kansas
My Appl. Expires 11-7-09

Judith M. Terhune
Judith M. Terhune, Notary Public

My App'l. Exp. 11-7-09

LOT	BLOCK	ELEVATION
1-13	A	1322.0
1-10	B	1322.0
1-8	C	1322.0
1-11	D	1322.0
RESERVE "A"		1322.0

BENCHMARK:
MONUMENT & 37TH ST. N.
CITY OF WICHITA BENCHMARK DISK.
NW CORNER OF INTERSECTION.
ONE BLOCK EAST OF MERIDIAN.
NE CORNER OF TRAFFIC SIGNAL LIGHT BASE.
48.70 FEET N.E. OF AIRCRAFT MARKER.
80.13 FEET N.E. OF "X" CUT IN MERIDIAN ROSE.
45.30 FEET N. OF Q. OF 37TH ST. N.
399.73 FEET EAST OF 3/4" IRON IN INTERSECTION
OF MERIDIAN & 37TH ST. N.
ELEV. = 1324.06 NGVD29

NOTE:
ALL LOTS WITHIN MESA VERDE ADDITION SHALL
HAVE A 5 FOOT INTERIOR SIDERYARD SETBACK.

NOTE:
A master grading plan for drainage has been developed for this subdivision
and is on file with the City of Wichita, Kansas. All drainage easements,
right-of-ways, or reserves shall remain at established grades or as
modified with the approval of the City Engineer of the City of Wichita,
Kansas. No obstructions which impede the flow of this drainage system
shall be allowed.