

# PRICE TRANSPORTATION ADDITION

## WICHITA, SEDGWICK COUNTY, KANSAS

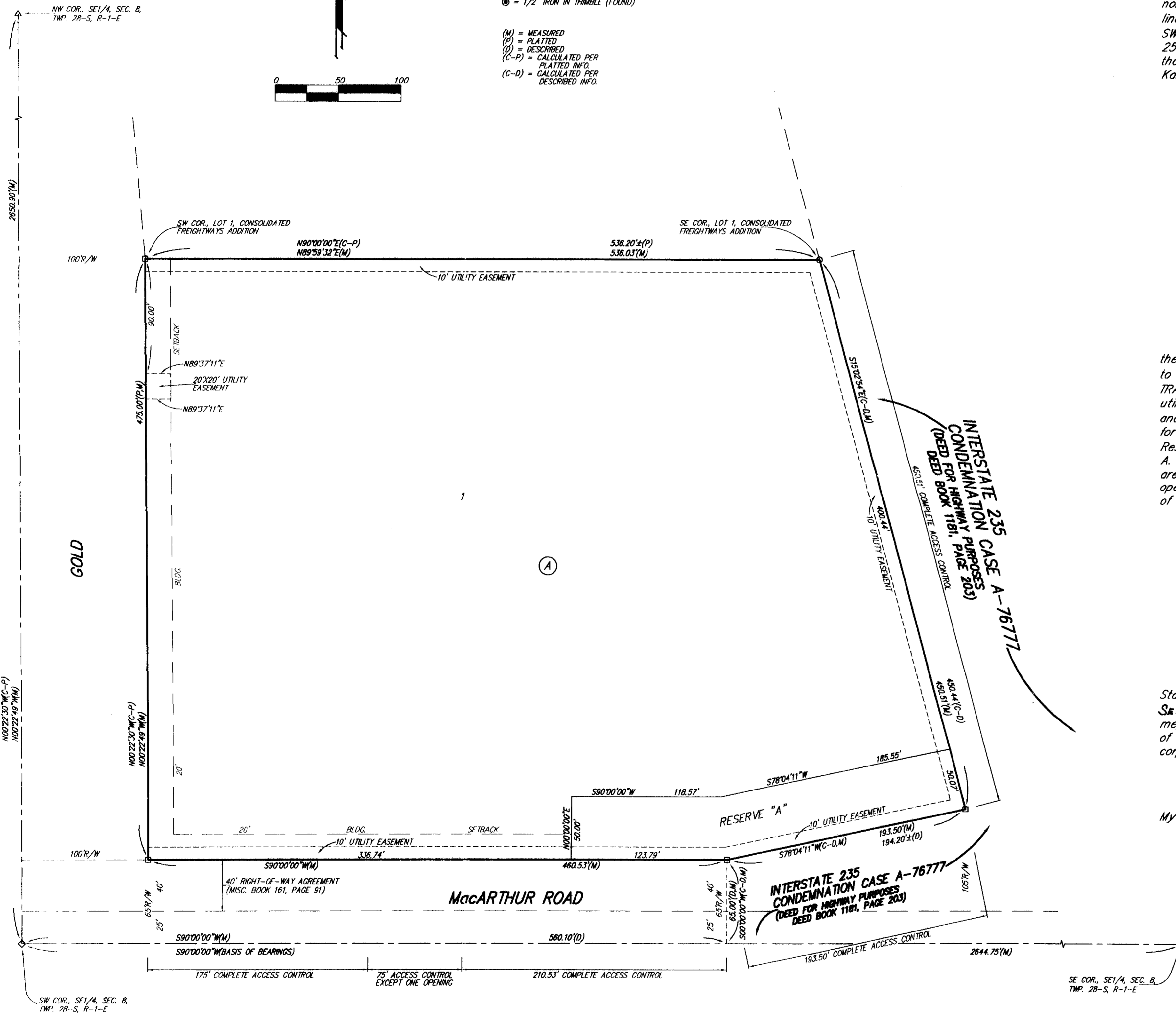
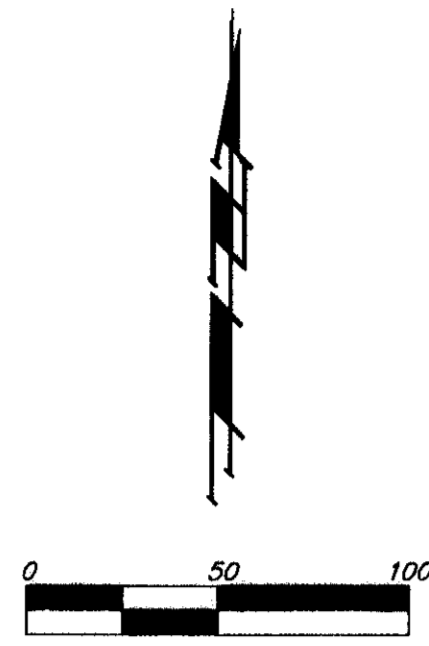
FILE COPY

FINAL TRACING REC'D

12-21-06  
Dec 2006-70

- = #4 REBAR W/ "BAUGHMAN" CAP (FOUND)
- = 1/2" IRON (FOUND)
- △ = #6 REBAR (FOUND)
- ◇ = 3/4" IRON IN THIMBLE (FOUND)
- = 1/2" IRON IN THIMBLE (FOUND)

- (M) = MEASURED
- (P) = PLATTED
- (D) = DESCRIBED
- (C-P) = CALCULATED PER PLATTED INFO
- (C-D) = CALCULATED PER DESCRIBED INFO



State of Kansas )  
 Sedgwick County) SS We, Baughman Company, P.A., Surveyors in  
 aforesaid county and state do hereby certify that we have surveyed and  
 platted "PRICE TRANSPORTATION ADDITION", Wichita, Sedgwick County,  
 Kansas and that the accompanying plat is a true and correct exhibit of  
 the property surveyed, described as that part of the SE1/4 of Sec. 8,  
 Twp. 28-S, R-1-E of the 6th P.M., Sedgwick County, Kansas lying  
 southwesterly of Interstate 235 right-of-way, EXCEPT that part lying  
 north of the following described line: Beginning at a point on the west  
 line of said SE1/4, 185.36 feet south of the northwest corner of the  
 SW1/4 of said SE1/4; thence east at right angles to said west line,  
 257.5 feet, more or less, to said Interstate right-of-way, and EXCEPT  
 that part platted as Lot 1, Consolidated Freightways Addition to Wichita,  
 Kansas, all being subject to road rights-of-way of record.  
 Existing public easements and dedications  
 being vacated by virtue of K.S.A. 12-512(b).  
 Baughman Company, P.A.

This plat of "PRICE TRANSPORTATION  
 ADDITION", Wichita, Sedgwick County, Kansas has been submitted to and  
 approved by the Wichita-Sedgwick County Metropolitan Area Planning  
 Commission, Wichita, Kansas.  
 Dated this \_\_\_\_\_ day of \_\_\_\_\_, 2006.  
 Wichita-Sedgwick County Metropolitan Area Planning Commission

\_\_\_\_\_, Chair  
 Harold L. Warner, Jr.  
 \_\_\_\_\_, Secretary  
 John L. Schlegel

Michael A. Conrey 12-21-2006, Surveyor  
 Michael G. Conrey

This plat approved and all dedications  
 shown hereon accepted by the City Council of the City of Wichita,  
 Kansas, this \_\_\_\_\_ day of \_\_\_\_\_.

\_\_\_\_\_, Mayor  
 Carlos Mayans  
 \_\_\_\_\_, City Clerk  
 Karen Sublett

Know all men by these presents that we,  
 the undersigned owners, have caused the land in the surveyors certificate  
 to be platted into a Lot, a Block, and a Reserve to be known as "PRICE  
 TRANSPORTATION ADDITION", Wichita, Sedgwick County, Kansas. The  
 utility easements are hereby granted as indicated for the construction  
 and maintenance of all public utilities. Reserve "A" is hereby reserved  
 for open space, drainage purposes, and utilities as confined to easement.  
 Reserve "A" shall be owned and maintained by the owner of Lot 1, Block  
 A. Access controls shall be as depicted on the face of the plat and  
 are hereby granted to the City of Wichita, Kansas. The permitted  
 opening locations shall be as determined by the City Engineer of the City  
 of Wichita, Kansas.

Reviewed in accordance with K.S.A. 58-2005  
 on this \_\_\_\_\_ day of \_\_\_\_\_.

Price Transportation, Inc., a Kansas corporation

Edward J. Toon, President  
 Edward J. Toon

Tricia L. Robello, L.S. #1246  
 Deputy County Surveyor  
 Sedgwick County, Kansas

State of Kansas )  
 Sedgwick County) SS The foregoing instrument acknowledged before  
 me, this 20th day of DECEMBER, 2006, by Edward J. Toon, President  
 of Price Transportation, Inc., a Kansas corporation, on behalf of the  
 corporation.

JUDITH M. TERHUNE  
 Notary Public - State of Kansas  
 My Appl. Expires 11-7-09

Judith M. Terhune, Notary Public  
 JUDITH M. TERHUNE

My App't. Exp. 11-7-09

Entered on transfer record this \_\_\_\_\_ day  
 of \_\_\_\_\_.

\_\_\_\_\_, County Clerk  
 Don Brace

State of Kansas )  
 Sedgwick County) SS This is to certify that this plat has been  
 filed for record in the office of the Register of Deeds, this \_\_\_\_\_ day  
 of \_\_\_\_\_, at \_\_\_\_\_ o'clock \_\_\_\_\_ M.; and is duly recorded.

\_\_\_\_\_, Register of Deeds  
 Bill Meek  
 \_\_\_\_\_, Deputy  
 Tonya Buckingham

NOTE:  
 A DRAINAGE PLAN HAS BEEN DEVELOPED FOR THIS SUBDIVISION AND IS  
 ON FILE WITH THE CITY OF WICHITA, KANSAS. DRAINAGE INTENT SHALL  
 REMAIN AS DEPICTED OR AS MODIFIED WITH THE APPROVAL OF THE CITY  
 ENGINEER OF THE CITY OF WICHITA, KANSAS. NO OBSTRUCTIONS WHICH  
 IMPEDE THE FLOW OF THIS DRAINAGE PLAN SHALL BE ALLOWED.