

FILE COPY

# HOSKINSON 3RD ADDITION WICHITA, SEDGWICK COUNTY, KANSAS

FINAL TRACING REC'D

12-20-06  
PL 5006.77

This plat of "HOSKINSON 3RD ADDITION",  
Wichita, Sedgwick County, Kansas has been submitted to and approved by  
the Wichita-Sedgwick County Metropolitan Area Planning Commission,  
Wichita, Kansas.  
Dated this \_\_\_\_\_ day of \_\_\_\_\_,  
Wichita-Sedgwick County Metropolitan Area Planning Commission

State of Kansas) SS  
Sedgwick County) We, Baughman Company, P.A., Surveyors in  
aforesaid county and state do hereby certify that we have surveyed and  
platted "HOSKINSON 3RD ADDITION", Wichita, Sedgwick County, Kansas and  
that the accompanying plat is a true and correct exhibit of the property  
surveyed, described as that part of the E1/2 of the NE1/4 of Sec. 33,  
Twp. 26-S, R-1-W of the 6th P.M., Sedgwick County, Kansas and further  
described as follows: Beginning at the NW corner of Lot 8, Block 1,  
Hoskinson 2nd Addition, Sedgwick County, Kansas; thence S00°07'35"W  
along the west line of said Lot 8, 206.00 feet to the SW corner of said  
Lot 8; thence S89°29'08"W parallel with the north line of said NE1/4,  
205.00 feet; thence N00°07'35"E parallel with the west line of said Lot 8,  
206.00 feet; thence N89°29'08"E parallel with the north line of said  
NE1/4, 205.00 feet to the point of beginning, EXCEPT the north 50 feet  
thereof for street.  
Existing public easements and dedications  
being vacated by virtue of K.S.A. 12-512(b).  
Baughman Company, P.A.

\_\_\_\_\_, Chair  
Harold L. Warner, Jr.

\_\_\_\_\_, Secretary  
John L. Schlegel

This plat approved and all dedications  
shown hereon accepted by the City Council of the City of Wichita,  
Kansas, this \_\_\_\_\_ day of \_\_\_\_\_.

\_\_\_\_\_, Mayor  
Carlos Mayans

\_\_\_\_\_, City Clerk  
Karen Sublett

Michael A. Conrey 12-20-06, Surveyor  
Michael G. Conrey

Reviewed in accordance with K.S.A. 58-2005  
on this \_\_\_\_\_ day of \_\_\_\_\_.

Know all men by these presents that we,  
the undersigned, have caused the land in the surveyors certificate to be  
platted into a Lot, a Block, and a Street, to be known as "HOSKINSON  
3RD ADDITION", Wichita, Sedgwick County, Kansas. The utility easement is  
hereby granted as indicated for the construction and maintenance of all  
public utilities. The drainage and utility easements are hereby granted as  
indicated for drainage purposes and for the construction and maintenance  
of all public utilities. The street is hereby dedicated to and for the use  
of the public. Access controls shall be as depicted on the face of the  
plat and are hereby granted to the City of Wichita, Kansas. The Minimum  
Building Pad Elevations for the lowest opening to the structures shall be  
as indicated on the face of the plat.

Box Development, L.L.C.,  
a Kansas limited liability company

\_\_\_\_\_, Member  
Michael J. Boyd

Entered on transfer record this \_\_\_\_\_ day  
of \_\_\_\_\_.

\_\_\_\_\_, County Clerk  
Don Brace

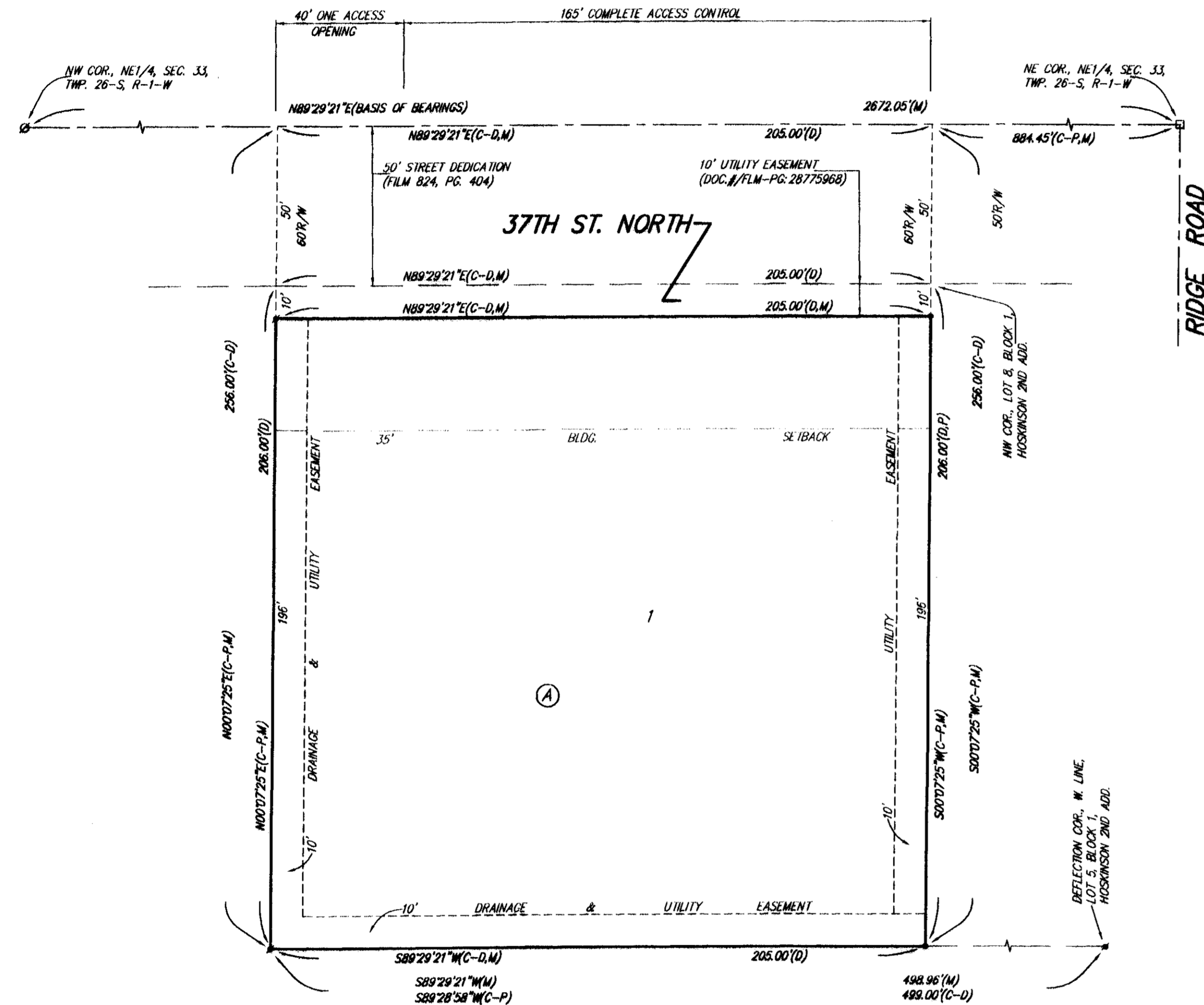
State of Kansas) SS This is to certify that this plat has been  
Sedgwick County) filed for record in the office of the Register of Deeds, this \_\_\_\_\_ day  
of \_\_\_\_\_, at \_\_\_\_\_ o'clock \_\_\_\_\_ M.; and is duly recorded.

\_\_\_\_\_, Register of Deeds  
Bill Meek

\_\_\_\_\_, Deputy  
Tonya Buckingham

State of Kansas) SS The foregoing instrument acknowledged before  
Sedgwick County) me, this 18<sup>th</sup> day of December, 2006, by Michael J. Boyd,  
Member of Box Development, L.L.C., a Kansas limited liability company, on  
behalf of the limited liability company.

RUTH A. GLAZE  
Notary Public  
RUTH A. GLAZE  
My App't. Exp. 12-21-08

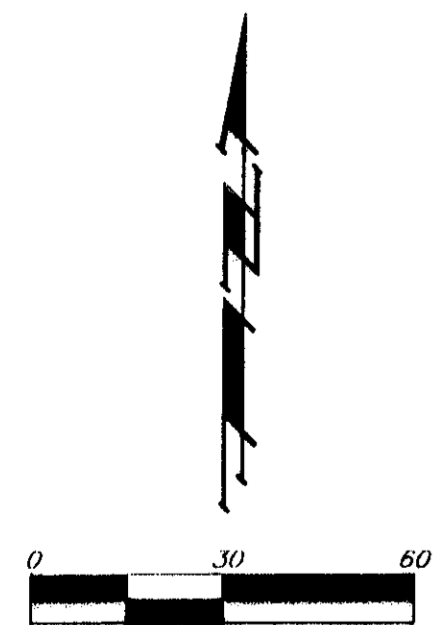


- = #4 REBAR W/ "BAUGHMAN" CAP (SET)
- = #4 REBAR W/ "BAUGHMAN" CAP (FOUND)
- = #0 REBAR IN THIMBLE (FOUND)
- = RAILROAD SPIKE (FOUND)

MINIMUM BUILDING PAD ELEVATIONS FOR LOWEST OPENING TO THE STRUCTURES		
LOTS	BLOCK	ELEVATION
1	A	1333.0

BENCHMARK:  
SQUARE CUT ON SOUTH HURGUARD OF R.C.B.C.,  
78' WEST OF RIDGE ROAD ON S. SIDE OF 37TH ST. N.  
ELEV. = 1331.52 NGVD29

- (M) = MEASURED
- (P) = PLATTED
- (D) = DESCRIBED
- (C-P) = CALCULATED PER  
PLATTED INFO.
- (C-D) = CALCULATED PER  
DESCRIBED INFO.



NOTE:  
A DRAINAGE PLAN HAS BEEN DEVELOPED FOR THIS SUBDIVISION AND IS  
ON FILE WITH THE CITY OF WICHITA, KANSAS. DRAINAGE INTENT SHALL  
REMAIN AS DEPICTED OR AS MODIFIED WITH THE APPROVAL OF THE CITY  
ENGINEER OF THE CITY OF WICHITA, KANSAS. NO OBSTRUCTIONS WHICH  
IMPEDE THE FLOW OF THIS DRAINAGE PLAN SHALL BE ALLOWED.