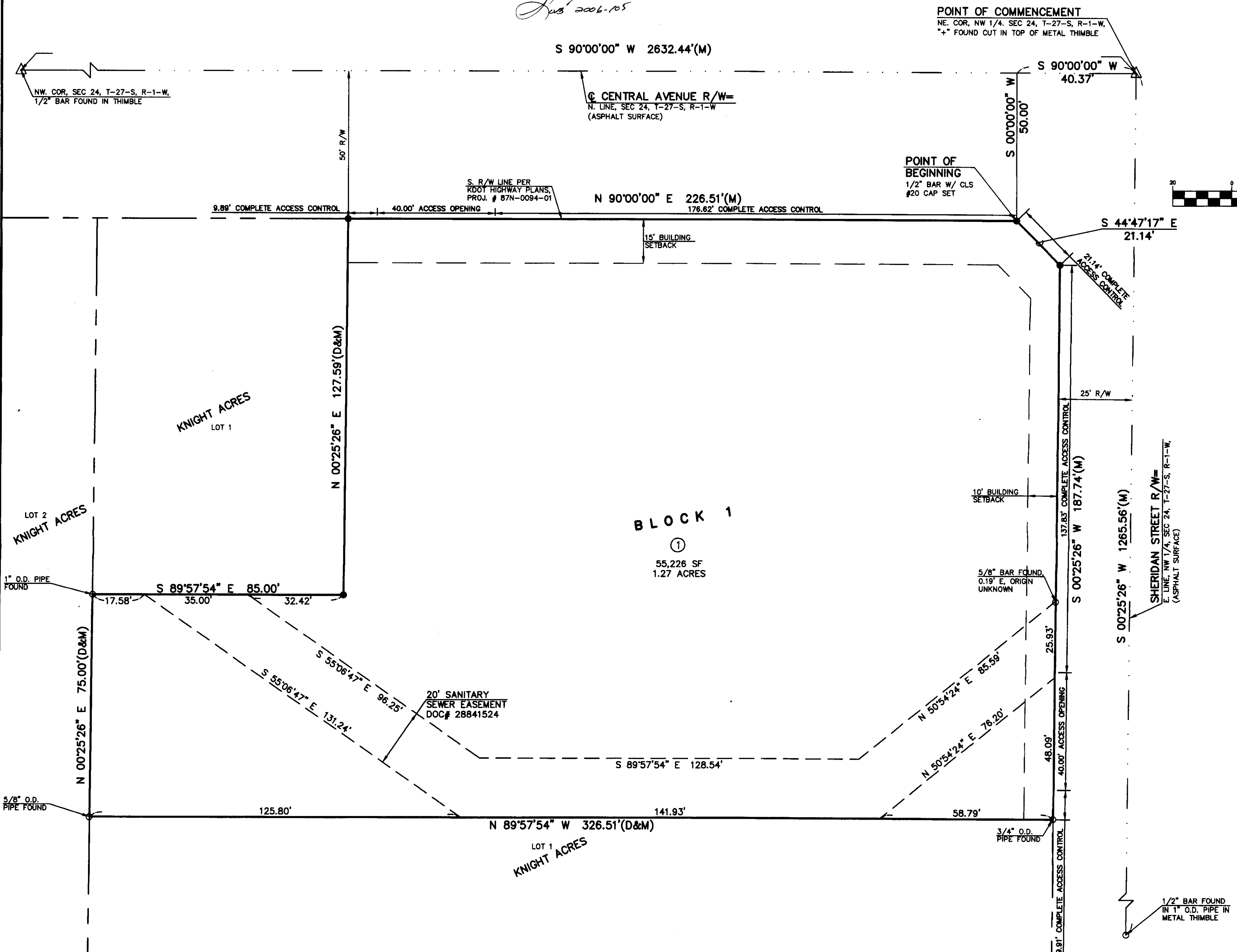


FINAL TRACING REC'D

THE FAMILY VIDEO ADDITION

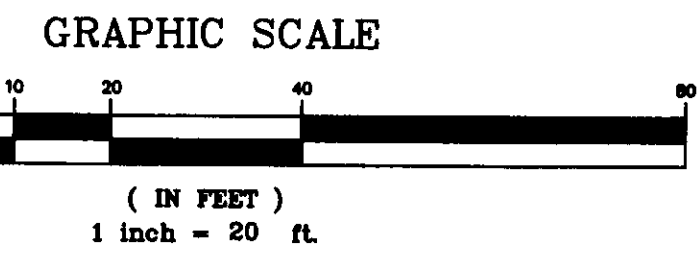
A REPLAT OF A PORTION OF LOT 1, KNIGHT ACRES ADDITION
CITY OF WICHITA, SEDGWICK COUNTY, KANSAS
IN THE NW 1/4, SEC. 24, T-27-S, R-1-W

2/8/07
KAS 2006-105



POINT OF COMMENCEMENT
NE. COR. NW 1/4, SEC 24, T-27-S, R-1-W,
"X" FOUND CUT IN TOP OF METAL THIMBLE

POINT OF BEGINNING
1/2" BAR W/ CLS
#20 CAP SET



KNOW ALL MEN BY THESE PRESENTS THAT I, THE UNDERSIGNED PROPERTY OWNER OF THE LAND AS SET FORTH HEREON IN THE LAND SURVEYOR'S CERTIFICATE, HAVE CAUSED THE SAME TO BE SURVEYED AND PLATTED INTO LOTS AND BLOCKS THE SAME TO BE KNOWN AS "THE FAMILY VIDEO ADDITION" AN ADDITION TO WICHITA, SEDGWICK COUNTY, KANSAS.

EASEMENTS FOR THE CONSTRUCTION AND MAINTENANCE OF DRAINAGE AND PUBLIC UTILITIES AS INDICATED ON THE ACCOMPANYING PLAT ARE HEREBY GRANTED.

A DRAINAGE PLAN HAS BEEN DEVELOPED FOR THIS PLAT. ALL DRAINAGE EASEMENTS, RIGHT-OF-WAY, OR RESERVES, SHALL REMAIN AT ESTABLISHED GRADES OR AS MODIFIED WITH THE APPROVAL OF THE CITY ENGINEER AND UNOBTSTRUCTED TO ALLOW FOR THE CONVEYANCE OF STORMWATER.

RESERVE "A" IS HEREBY ESTABLISHED FOR STORMWATER RUN-OFF FOR THE BENEFIT OF THE SUBDIVISION. MAINTENANCE AND OPERATION OF STORMWATER DETENTION FACILITY IN RESERVE "A" IS AS STIPULATED IN "RESTRICTIVE AGREEMENT AND GRANT OF EASEMENTS" AS FILED IN

ALL ACCESS LOCATIONS ARE AS INDICATED ON THE ACCOMPANYING PLAT OR AS DETERMINED BY THE CITY ENGINEER. ALL ACCESS CONTROLS ARE HEREBY DEDICATED TO THE CITY OF WICHITA.

KA Hoogland
FAMILY VIDEO MOVIE CLUB, INC.
KEITH HOOGLAND; PRESIDENT

THIS INSTRUMENT WAS ACKNOWLEDGED BEFORE ME ON 22 DAY OF February, 2007 BY KEITH HOOGLAND AS PRESIDENT OF FAMILY VIDEO MOVIE CLUB, INC.



Heather Hanrahan
NOTARY PUBLIC HEATHER HANRAHAN

MY COMMISSION EXPIRES: 8/21/10

I, LEON D. OSBOURN, A CIVIL ENGINEER AND LICENSED LAND SURVEYOR IN KANSAS, DO HEREBY CERTIFY THAT I HAVE BEEN IN RESPONSIBLE CHARGE OF SURVEYING AND PLATTING OF "THE FAMILY VIDEO ADDITION" AN ADDITION TO WICHITA, SEDGWICK COUNTY, KANSAS, INTO LOTS AND BLOCKS, THE SAME BEING ACCURATELY SET FORTH IN THE ACCOMPANYING PLAT AND DESCRIBED HEREIN:

A TRACT OF LAND BEING A PORTION OF LOT 1, KNIGHT ACRES TO SEDGWICK COUNTY, KANSAS BEING MORE PARTICULARLY DESCRIBED AS FOLLOWS:
COMMENCING AT THE NORTHEAST CORNER OF THE NORTHWEST QUARTER OF SECTION 24, TOWNSHIP 27 SOUTH, RANGE 1 WEST OF THE 6TH PRINCIPAL MERIDIAN, SEDGWICK COUNTY, KANSAS, SAID POINT ALSO BEING THE INTERSECTION OF THE CENTERLINE OF CENTRAL AVENUE AND SHERIDAN STREET RIGHTS-OF-WAY;

THENCE S 90°00'00" W ALONG THE NORTH LINE OF SAID NORTHWEST QUARTER AND SAID CENTERLINE OF CENTRAL AVENUE, A DISTANCE OF 40.37 FEET;
 THENCE S 00°00'00" W A DISTANCE OF 50.00 FEET TO A POINT ON THE SOUTH RIGHT-OF-WAY LINE OF SAID CENTRAL AVENUE, SAID POINT ALSO BEING THE POINT OF BEGINNING OF THE TRACT TO BE DESCRIBED;
 THENCE S 44°47'17" E CONTINUING ALONG SAID SOUTH R/W LINE A DISTANCE OF 21.14 FEET TO THE INTERSECTION OF SAID SOUTH RIGHT-OF-WAY LINE AND THE WEST RIGHT-OF-WAY LINE OF SHERIDAN STREET;
 THENCE S 00°25'26" W ALONG SAID WEST RIGHT-OF-WAY LINE, A DISTANCE OF 187.74 FEET;
 THENCE N 89°57'54" W A DISTANCE OF 326.51 FEET TO A POINT ON THE WEST LINE OF SAID LOT 1;
 THENCE N 00°25'26" E ALONG SAID WEST LINE A DISTANCE OF 75.00 FEET;
 THENCE S 89°57'54" E A DISTANCE OF 85.00 FEET;
 THENCE N 00°25'26" E A DISTANCE OF 127.59 FEET TO A POINT ON SAID SOUTH RIGHT-OF-WAY LINE;
 THENCE N 90°00'00" E ALONG SAID NORTH LINE AND SAID SOUTH RIGHT-OF-WAY LINE A DISTANCE OF 226.51 FEET TO THE POINT OF BEGINNING, CONTAINS 55,226 SF, 1.27 ACRES, MORE OR LESS. SUBJECT TO EASEMENTS, RESERVATIONS, AND RESTRICTIONS NOW OF RECORD.
 END OF DESCRIPTION

THE PROPERTY DESCRIBED ABOVE IS THE SAME AS THE PROPERTY DESCRIBED IN DEED BOOK 738, PAGE 0949, DOC#/FLM-PG: 28726062, & DOC#/FLM-PG: 28666299 IN OF OFFICE OF THE SEDGWICK COUNTY REGISTER OF DEEDS.

BASIS OF BEARINGS:
WAS AN ASSUMED BEARING OF S 90°00'00" W ON THE NORTH LINE OF SECTION 24, TOWNSHIP 27 SOUTH, RANGE 1 WEST, WICHITA, SEDGWICK COUNTY, KANSAS.

ALL LOTS, BLOCKS, STREETS, ACCESS CONTROL, EASEMENTS AND BUILDING SETBACKS WITHIN THE ABOVE DESCRIBED PROPERTY ARE HEREBY VACATED AND REPLATTED BY VIRTUE OF K.S.A. 12-512(b).

I HEREBY CERTIFY THAT THE DETAILS OF THIS PLAT ARE CORRECT TO THE BEST OF MY KNOWLEDGE AND BELIEF THIS 5 DAY OF January, 2007.

ERROR OF CLOSURE IS 1:66,601



LEON D. OSBOURN
KAW VALLEY ENGINEERING, INC
2319 NORTH JACKSON STREET
PO BOX 1304
JUNCTION CITY, KANSAS 66441

REVIEWED IN ACCORDANCE WITH K.S.A. 58-2005 ON THIS _____ DAY OF _____, 2007.

TRICIA L. ROBELLO, L.S. #1246
DEPUTY COUNTY SURVEYOR
SEDGWICK COUNTY, KANSAS

THIS PLAT OF "THE FAMILY VIDEO ADDITION" HAS BEEN SUBMITTED TO AND APPROVED BY THE WICHITA-SEDGWICK COUNTY METROPOLITAN AREA PLANNING COMMISSION, WICHITA, KANSAS.

DATED THIS _____ DAY OF _____, 2007.

WICHITA-SEDGWICK COUNTY METROPOLITAN AREA PLANNING COMMISSION

BY _____ CHAIR
DARRELL A. DOWNING

ATTEST: _____ SECRETARY
JOHN L. SCHLEGEL

THIS PLAT APPROVED AND ALL DEDICATIONS SHOWN HEREON, IF ANY, ACCEPTED BY THE CITY COUNCIL OF THE CITY OF WICHITA, KANSAS, THIS _____ DAY OF _____, 2007.

AT THE DIRECTION OF THE CITY COUNCIL

CARLOS MAYANS, MAYOR
KAREN SUBLETT, CITY CLERK

ENTERED ON TRANSFER RECORD THE _____ DAY OF _____, 2007.

DON BRACE, COUNTY CLERK

STATE OF KANSAS }
SEDGWICK COUNTY }SS

THIS IS TO CERTIFY THAT THIS INSTRUMENT WAS FILED FOR RECORD IN THE REGISTER OF DEEDS OFFICE, AT _____, ON THE _____ DAY OF _____, 2007.

BILL MEEK, REGISTER OF DEEDS

TONYA BUCKINGHAM, DEPUTY

KAW VALLEY ENGINEERING, INC.
2319 NORTH JACKSON - PO BOX 1304
JUNCTION CITY, KANSAS 66441