

FINAL TRACING REC'D

GRAY'S 6TH ADDITION WICHITA, SEDGWICK COUNTY, KANSAS

State of Kansas) SS We, Baughman Company, P.A., Surveyors in
Sedgwick County) aforesaid county and state do hereby certify that we have surveyed and
platted "GRAY'S 6TH ADDITION", Wichita, Sedgwick County, Kansas and that
the accompanying plat is a true and correct exhibit of the property
surveyed, described as and being a replat of Lot 1, Block A, Wheatland
Commercial Addition, Wichita, Sedgwick County, Kansas, EXCEPT the east
10 feet of the south 47.77 feet thereof dedicated for street.
All being situated in the NE 1/4 of Sec. 15, Twp. 28-S,
R-1-W of the 6th P.M., Sedgwick County, Kansas.
Existing public easements and dedications
being vacated by virtue of K.S.A. 12-512(b).
Baughman Company, P.A.

This plat of "GRAY'S 6TH ADDITION", Wichita,
Sedgwick County, Kansas has been submitted to and approved by the
Wichita-Sedgwick County Metropolitan Area Planning Commission, Wichita,
Kansas.

Dated this _____ day of _____, 2007.
Wichita-Sedgwick County Metropolitan Area Planning Commission

_____, Chair
Darrell A. Downing

_____, Secretary
John L. Schlegel

This plat approved and all dedications
shown hereon accepted by the City Council of the City of Wichita,
Kansas, this _____ day of _____, 2007.

_____, Mayor
Carl Brewer

_____, City Clerk
Karen Sublett

Reviewed in accordance with K.S.A. 58-2005
on this _____ day of _____, 2007.

Know all men by these presents that we,
the undersigned, have caused the land in the surveyors certificate to be
platted into Lots, Blocks, and Streets, to be known as "GRAY'S 6TH
ADDITION", Wichita, Sedgwick County, Kansas. The utility easements are
hereby granted as indicated for the construction and maintenance of all
public utilities. The streets are hereby dedicated to and for the use of the
public. Access controls shall be as depicted on the face of the plat and
are hereby granted to the City of Wichita, Kansas.

Gray Development, Inc., a Kansas corporation

_____, President
Billy J. Gray

Entered on transfer record this _____ day
of _____, 2007.

_____, County Clerk
Don Brace

State of Kansas) SS This is to certify that this plat has been
Sedgwick County) filed for record in the office of the Register of Deeds, this _____ day
of _____, 2007 at _____ o'clock _____ M; and is duly recorded.

_____, Register of Deeds
Bill Meek

_____, Deputy
Tonya Buckingham

State of Kansas) SS The foregoing instrument acknowledged before
Sedgwick County) me, this 3RD day of MAY, 2007, by Billy J. Gray, President of
Gray Development, Inc., a Kansas corporation, on behalf of the corporation.

JUDITH M. TERHUNE
Notary Public - State of Kansas
My Appl. Expires 11-7-09

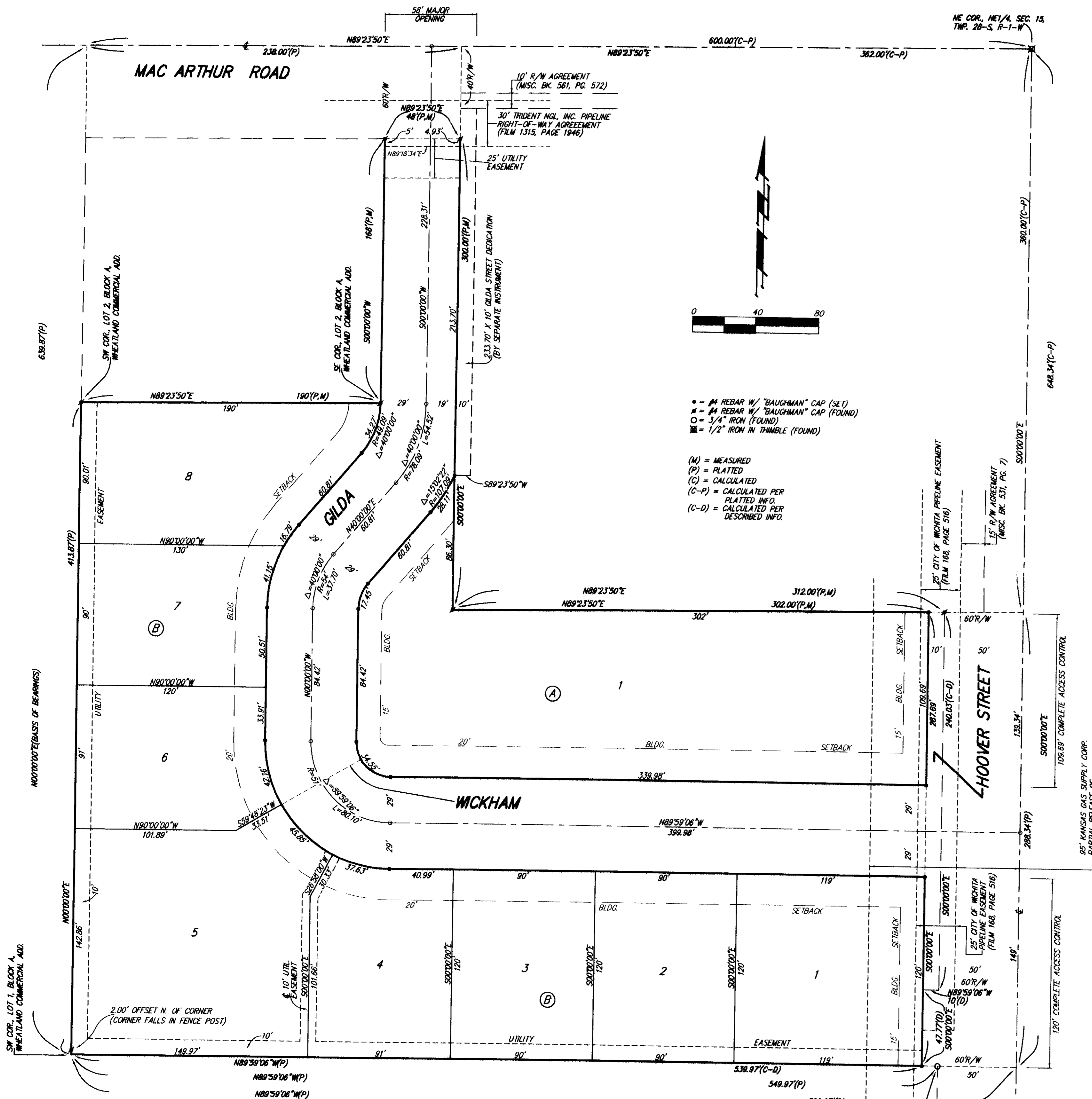
_____, Notary Public
Judith M. Terhune

My App't. Exp. 11-7-09

GRAY'S 6TH ADDITION

Baughman Company, P.A.
315 Ellis St. Wichita, KS 67211 P 316.262.7271 F 316.262.0149
ENGINEERING | SURVEYING | PLANNING | LANDSCAPE ARCHITECTURE

E:\PLAT\GRAY'S 6TH ADD\DWG\GRAY6.DWG\MCC



- = #4 REBAR W/ "BAUGHMAN" CAP (SET)
 - = #4 REBAR W/ "BAUGHMAN" CAP (FOUND)
 - = 3/4" IRON (FOUND)
 - ⊠ = 1/2" IRON IN THIMBLE (FOUND)
- (M) = MEASURED
 - (P) = PLATTED
 - (C) = CALCULATED
 - (C-P) = CALCULATED PER PLATTED INFO.
 - (C-D) = CALCULATED PER DESCRIBED INFO.

NOTE:
A DRAINAGE PLAN HAS BEEN DEVELOPED FOR THIS SUBDIVISION AND IS
ON FILE WITH THE CITY OF WICHITA, KANSAS. DRAINAGE INTENT SHALL
REMAIN AS DEPICTED OR AS MODIFIED WITH THE APPROVAL OF THE CITY
ENGINEER OF THE CITY OF WICHITA, KANSAS. NO OBSTRUCTIONS WHICH
IMPEDE THE FLOW OF THIS DRAINAGE PLAN SHALL BE ALLOWED.

NOTE:
GRANT OF 30' UTILITY ACCESS EASEMENT, (FILM 2222,
PAGE 880), IS NOW LYING ENTIRELY WITHIN THE GLDA
STREET RIGHT-OF-WAY AND IS IN THE PROCESS OF
BEING RELEASED THIS 2ND DAY OF MAY, 2007.