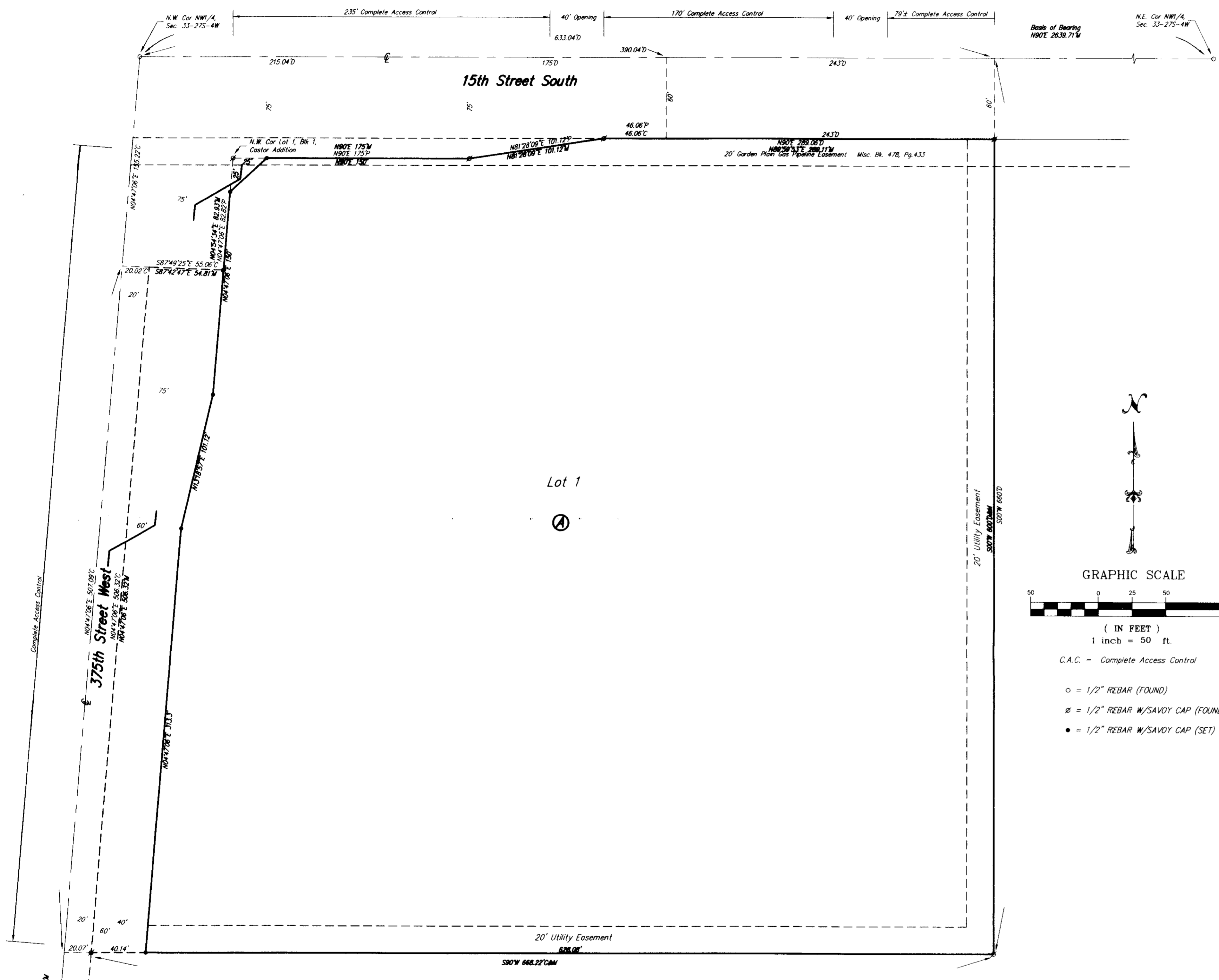


MDI ADDITION

SEDGWICK COUNTY, KANSAS

FILE COPY
Date 05-22-07



State of Kansas)
Sedgwick County) SS

We, Savoy Company, P.A., Surveyors in aforesaid county and state do hereby certify that, under the supervision of the undersigned, we have surveyed and platted "MDI ADDITION", Sedgwick County, Kansas and that the accompanying plat is a true and correct exhibit of the property surveyed, described as follows:

A tract of land beginning 390.04 feet east of the N.W. Corner of the NW1/4 of Sec. 33, Twp. 27-S, R-4-W of the 6th P.M., Sedgwick County, Kansas, said point being the N.E. Corner of Castor Addition, Sedgwick County, Kansas; thence south with a deflection angle to the right of 90°; 560 feet; thence west with a deflection to the right of 90°; 175 feet; thence south with a deflection angle to the left of 90°; 100 feet; thence east with a deflection angle to the right of 90°; 418 feet; thence north with a deflection to the left of 90°; 660 feet to the north line of said NW1/4; thence west, along the north line of said NW1/4, 243 feet to the point of beginning, except the north 60 feet thereof for road right-of-way, AND

Beginning at a point 60 feet south and 20 feet east of the N.W. Corner of the NW1/4 of Sec. 33, Twp. 27-S, R-4-W of the 6th P.M., Sedgwick County, Kansas; thence east, parallel with the north line of said Section, 200 feet; thence south, on a line 90° to the north line of said Section, 600 feet; thence west 252.3 feet more or less to a point 20 feet east of the west line of said NW1/4; thence north, parallel with the west line of said NW1/4, 600 feet more or less to the point of beginning, except that part platted as Castor Addition, Sedgwick County, Kansas, AND
Being a replat of Lot 1, Block 1, Castor Addition, Sedgwick County, Kansas.

All Public easements and dedications being vacated by virtue of K.S.A. 12-512(b).

Savoy Company, P.A.

Date 8 Jan 07
Mark A. Savoy RLS #788
Surveyor

Know all men by these presents that we, the undersigned, have caused the land described in the surveyors certificate to be platted into a Lot, Block and Streets to be known as "MDI ADDITION", Sedgwick County, Kansas. The streets are hereby dedicated to and for the use of the public. The utility easements are hereby granted as indicated for the construction and maintenance of all public utilities. A drainage plan has been developed for this plat and all drainage easements, and rights-of-way shall remain at established grades or as modified with the approval of the County Engineer, and unobstructed to allow for the conveyance of stormwater. Access Controls are hereby granted to the appropriate governing body as shown on the face of the plat.

MDI Corporation, a Kansas Corporation

JOHN F. MIES
Notary Public - State of Kansas
My Agent Expires 08/09/2008
Robert D. Mies Secretary

State of Kansas)
Sedgwick County) SS

The foregoing instrument, acknowledged before me, this 23rd day of February, 2007, by Robert D. Mies, Secretary of MDI Corporation, a Kansas Corporation on behalf of the corporation.

My App't. Exp. 12/29/08
Notary Public

State of Kansas)
Sedgwick County) SS

The foregoing instrument acknowledged before me, this 16th day of January, 2007, by _____, _____ of Bank of America, on behalf of the bank.

My App't. Exp. August 3, 2007
Notary Public

State of Kansas)
Sedgwick County) SS

The foregoing instrument acknowledged before me, this 23rd day of February, 2007, by Frank L. Castor and Sharon Castor, husband and wife.

My App't. Exp. 10/30/07
Notary Public

LINDA S. HAMBY
NOTARY PUBLIC
STATE OF KANSAS

We, the undersigned, holders of a mortgage on the above described property do hereby consent to this plat of "MDI ADDITION", Sedgwick County, Kansas.

Bank of America
Sharon L. Castor
Frank L. Castor

This plat of "MDI ADDITION", Sedgwick County, Kansas, has been submitted to and approved by the Wichita-Sedgwick County Metropolitan Area Planning Commission, Wichita, Kansas. Dated this _____ day of _____, 2005.

Wichita-Sedgwick County Metropolitan Area Planning Commission
Morris K. Dunlap Acting Chairman
John L. Schlegel Secretary

State of Kansas)
Sedgwick County) SS

This plat approved and all dedications shown hereon, are hereby accepted by the Board of County Commissioners, Sedgwick County, Kansas, on this _____ day of _____, 2007.

Ben Sciortino Chairman
Don Brace County Clerk

Reviewed in accordance with K.S.A. 58-2005 on this _____ day of _____, 2007.

Tricia L. Robello, L.S. #1246
Deputy County Surveyor
Sedgwick County, Kansas

Entered on transfer record this _____ day of _____, 2007.

Don Brace County Clerk

State of Kansas)
Sedgwick County) SS

This is to certify that this plat has been filed for record in the office of the Register of Deeds, this _____ day of _____, 2007, at _____ o'clock _____ M.; and is duly recorded.

Bill Meek Register of Deeds
Tonya Buckingham Deputy