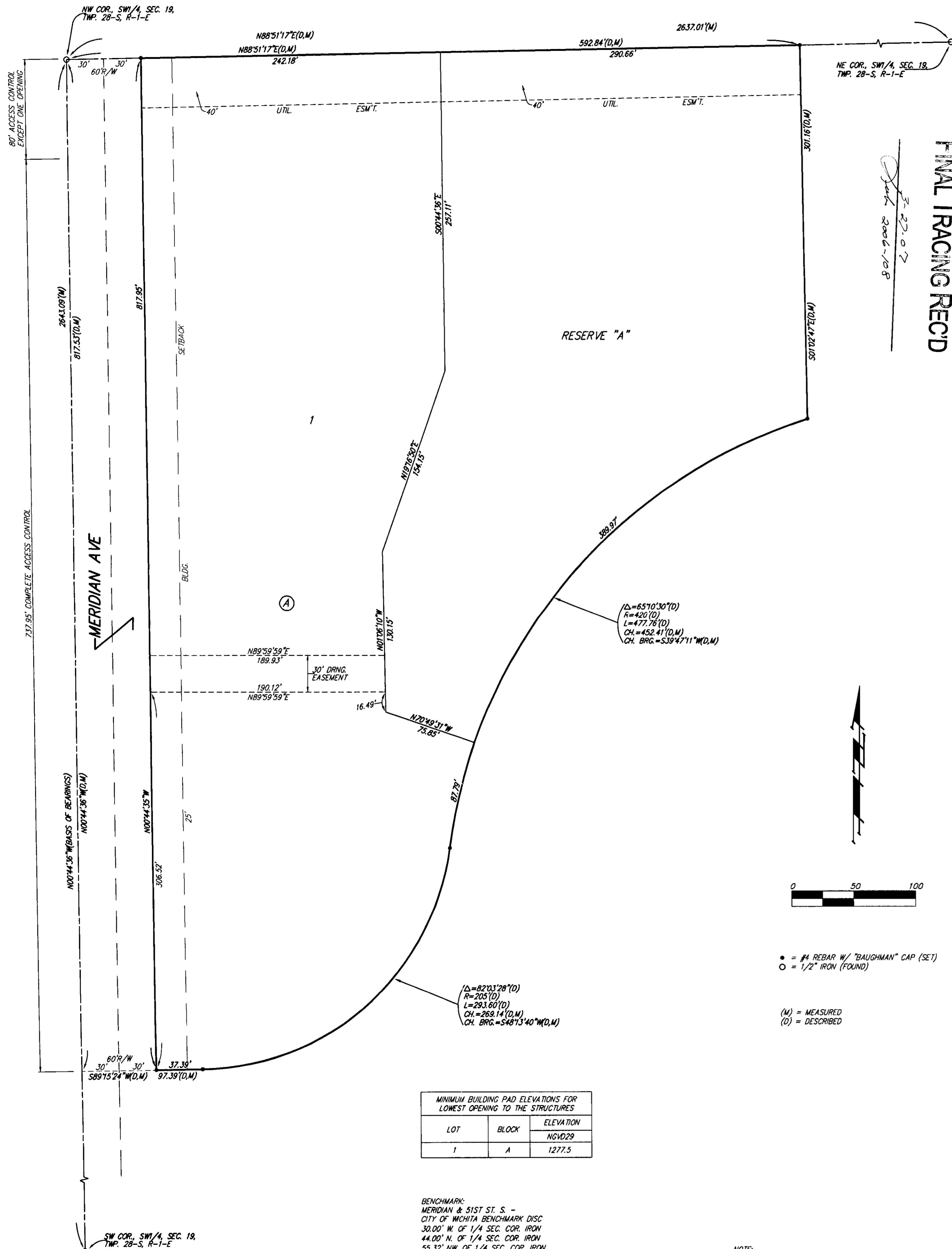


SOUTH LAKES SPORTS COMPLEX ADDITION

WICHITA, SEDGWICK COUNTY, KANSAS



MINIMUM BUILDING PAD ELEVATIONS FOR LOWEST OPENING TO THE STRUCTURES		
LOT	BLOCK	ELEVATION
1	A	NGVD29 1277.5

BENCHMARK:
MERIDIAN & 51ST ST. S. -
CITY OF WICHITA BENCHMARK DISC
30.00' W. OF 1/4 SEC. COR. IRON
44.00' N. OF 1/4 SEC. COR. IRON
55.32' NW. OF 1/4 SEC. COR. IRON
54.70' NW. OF @ OF SAN. SEWER MANHOLE
55.80' SSW. OF @ OF HEADWALL UNDER MERIDIAN
ELEV. = 1276.02 NGVD29

NOTE:
A DRAINAGE PLAN HAS BEEN DEVELOPED FOR THIS SUBDIVISION AND IS ON FILE WITH THE CITY OF WICHITA, KANSAS. DRAINAGE INTENT SHALL REMAIN AS DEPICTED OR AS MODIFIED WITH THE APPROVAL OF THE CITY ENGINEER OF THE CITY OF WICHITA, KANSAS. NO OBSTRUCTIONS WHICH IMPEDE THE FLOW OF THIS DRAINAGE PLAN SHALL BE ALLOWED.

State of Kansas) SS We, Baughman Company, P.A., Surveyors in
Sedgwick County) aforesaid county and state do hereby certify that we have surveyed and
platted "SOUTH LAKES SPORTS COMPLEX ADDITION", Wichita, Sedgwick
County, Kansas and that the accompanying plat is a true and correct
exhibit of the property surveyed, described as follows: A tract in the
SW1/4 of Sec. 19, Twp. 28-S, R-1-E of the 6th P.M., Sedgwick County,
Kansas, described as beginning at the NW corner of said SW1/4; thence
N88°51'17"E along the north line of said SW1/4, 592.84 feet; thence
S01°02'47"E, 301.16 feet to a point on a curve to the left; thence
southwesterly along said curve, having a central angle of 65°10'30" and a
radius of 420.00 feet, an arc distance of 477.76 feet, (having a chord
length of 452.41 feet bearing S39°47'11"W), to the P.R.C. of a curve to
the right; thence southwesterly and westerly along said curve, having a
central angle of 82°03'28" and a radius of 205.00 feet, an arc distance
of 293.60 feet, (having a chord length of 269.14 feet bearing
S48°13'40"W), to the P.T. of said curve; thence S89°15'24"W, 97.39 feet to
a point on the west line of said SW1/4; thence N00°44'36"W along the
west line of said SW1/4, 817.53 feet to the point of beginning, all being
subject to road rights-of-way of record.

Existing public easements and dedications
being vacated by virtue of K.S.A. 12-512(b).
Baughman Company, P.A.

_____, Surveyor
Michael G. Conrey

Know all men by these presents that we,
the undersigned, have caused the land in the surveyors certificate to be
platted into a Lot, a Block, a Street, and a Reserve to be known as
"SOUTH LAKES SPORTS COMPLEX ADDITION", Wichita, Sedgwick County,
Kansas. The utility easement is hereby granted as indicated for the
construction and maintenance of all public utilities. The drainage
easement is hereby granted as indicated for drainage purposes. The
street is hereby dedicated to and for the use of the public. Reserve "A"
is hereby reserved for open space, landscaping, berms, sidewalks, lakes,
drainage purposes, and utilities as confined to easement. Reserve "A"
shall be owned and maintained by the owner of Lot 1, Block A. Access
controls shall be as depicted on the face of the plat and are hereby
granted to the City of Wichita, Kansas. The permitted opening location
shall be as determined by the City Engineer of the City of Wichita, Kansas.
The Minimum Building Pad Elevation for the lowest opening to the
structures on Lot 1, Block A, shall be as indicated on the face of the plat.

City of Wichita, Kansas, a Municipal Corporation

_____, Mayor
Carlos Mayans

Attest: _____, City Clerk
Karen Sublett

_____, Notary Public

State of Kansas) SS The foregoing instrument acknowledged before
Sedgwick County) me, this _____ day of _____, 2007, by Carlos Mayans, Mayor
of the City of Wichita, Kansas, a Municipal Corporation, on behalf
of the corporation.

My App't. Exp. _____

This plat of "SOUTH LAKES SPORTS COMPLEX
ADDITION", Wichita, Sedgwick County, Kansas has been submitted to and
approved by the Wichita-Sedgwick County Metropolitan Area Planning
Commission, Wichita, Kansas.

Dated this _____ day of _____, 2006.
Wichita-Sedgwick County Metropolitan Area Planning Commission

_____, Chair
Darrell A. Downing

_____, Secretary
John L. Schlegel

This plat approved and all dedications
shown hereon accepted by the City Council of the City of Wichita,
Kansas, this _____ day of _____, 2007.

_____, Mayor
Carlos Mayans

_____, City Clerk
Karen Sublett

Reviewed in accordance with K.S.A. 58-2005
on this _____ day of _____, 2007.

_____,
Tricia L. Robello, L.S. #1246
Deputy County Surveyor
Sedgwick County, Kansas

Entered on transfer record this _____ day
of _____, 2007.

_____, County Clerk
Don Brace

State of Kansas) SS This is to certify that this plat has been
Sedgwick County) filed for record in the office of the Register of Deeds, this _____ day
of _____, 2007 at _____ o'clock _____ M; and is duly recorded.

_____, Register of Deeds
Bill Meek

_____, Deputy
Tonya Buckingham