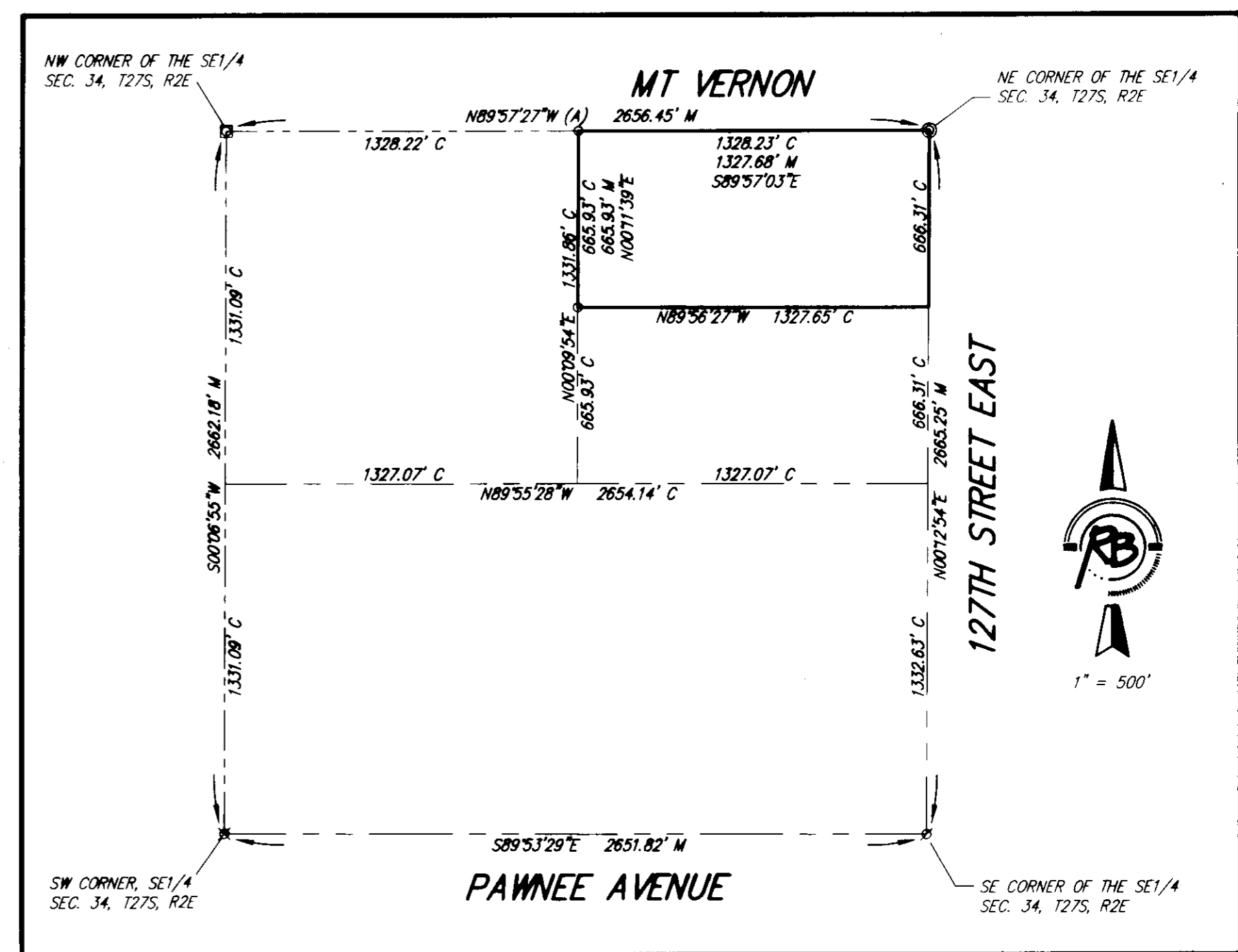
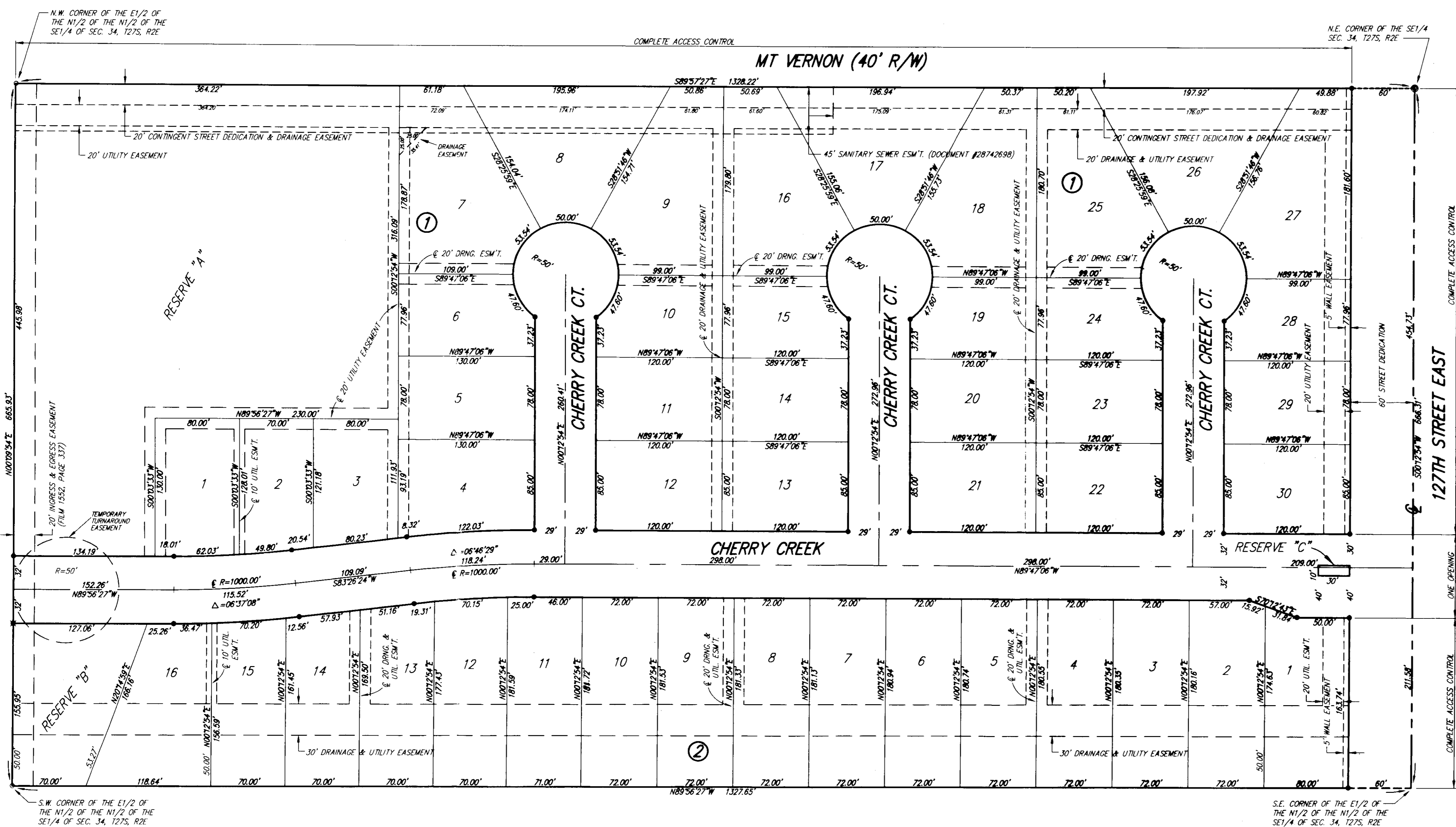


TARA CREEK

An Addition to Wichita, Sedgwick County, Kansas

Sub 2006-23



This plat approved and all dedications shown hereon accepted by the City Council of the City of Wichita, Kansas, this _____ day of _____.

At the Direction of the City Council

 Carl Brewer Mayor
 Karen Sublett City Clerk

Reviewed in accordance with K.S.A. 58-2005 on this _____ day of February, 2007.



 Deputy County Surveyor
 Sedgwick County Kansas

Entered on transfer record this _____ day of _____, _____

 Don Brace County Clerk

State of Kansas) SS
 Sedgwick County)

This is to certify that this plat has been filed for record in the office of the Register of Deeds, this _____ day of _____, _____, at _____ o'clock _____ M, and is duly recorded.

 Register of Deeds
 Bill Meek
 _____ Deputy
 Tonya Buckingham

- SURVEY MARKER LEGEND**
- = PK NAIL IN CONCRETE (FOUND)
 - = 1/2" REBAR W/LAND MEASURE CAP (FOUND)
 - ⊙ = 3/4" IRON PIPE (FOUND)
 - ⊗ = 5/8" REBAR W/GARBER CAP (FOUND)
 - ⊠ = 1" BAR (FOUND)
 - ⊡ = 5/8" REBAR W/R&B CAP (FOUND FROM CASA BELLA ADDITION)
 - = 5/8" REBAR W/R&B CAP (SET)

BENCH MARK: SRB BRASS DISC 55.45' E. & 5.13' S. OF THE N.W. COR., SW1/4, SEC. 35, T27S, R2E. ELEV=1348.35 (N.G., V.D., 1929)

BLOCK	LOT NO.	ELEVATION (N.G.A., 1929)
1	1, 2, 3, 5, 6, 7	1336.8

State of Kansas) SS
 Sedgwick County)

We, Ruggles & Bohm, P.A., Land Surveyors in aforesaid county and state, do hereby certify that, under the supervision of the undersigned, we have surveyed and platted "TARA CREEK", An Addition to Wichita, Sedgwick County, Kansas, and that the accompanying plat is a true and correct exhibit of the property surveyed, described as follows:

The East Half of the North Half of the North Half of the Southeast Quarter of Section 34, Township 27 South, Range 2 East of the 6th P.M., Sedgwick County, Kansas.

All public easements and dedications are hereby vacated by virtue of K.S.A. 12-512(b).

Ruggles & Bohm, P.A.

 Thomas C. Ruggles
 Land Surveyor

Know all men by these presents that we, the undersigned, have caused the land described in the surveyor's certificate to be platted into Lots, Blocks, Reserves and Streets, to be known as "TARA CREEK", An Addition to Wichita, Sedgwick County, Kansas. Access Controls as indicated are hereby granted to the appropriate governing body. The streets are hereby dedicated to and for the use of the public. Utility Easements are hereby granted for the construction and maintenance of all public utilities. Drainage Easements are hereby granted to the public as indicated for drainage purposes. Reserves "A" and "B" are hereby reserved for walls, signage, gazebos, playground, structures, picnic areas/ tables with canopies, irrigation, walks, lighting, landscaping, berms, lakes, drainage, drainage structures, and utilities confined to easements. Reserve "C" is hereby reserved for entry features, signage, irrigation, lighting and landscaping. The Reserves are to be owned and maintained by the Home Owners Association for the addition. The contingent street dedication shall become effective in the event that the City determines a need for the right-of-way for any street-related purposes. The temporary turnaround easement is hereby granted for the use of the public, and will expire upon extension of Cherry Creek beyond the limits of this plat. A drainage plan has been developed for this plat; the property shall remain at established grades, or as modified with the approval of the City Engineer, and unobstructed to allow for the conveyance of storm water.

A & D Properties, Inc.

 Eugene Vitarelli
 President

State of Kansas)
 Sedgwick County) SS

The foregoing instrument acknowledged before me, this 19th day of FEBRUARY, 2007, by Eugene Vitarelli, President of A&D Properties, Inc., on behalf of the corporation.

 Rachelle Fox
 Notary Public

My appointment expires 6-04-2007

This plat of "TARA CREEK", An Addition to Wichita, Sedgwick County, Kansas, has been submitted to and approved by the Wichita-Sedgwick County Metropolitan Area Planning Commission, Wichita, Kansas.

Dated this _____ day of _____, 200__

Wichita-Sedgwick County Metropolitan Area Planning Commission

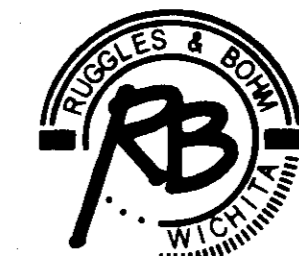
 Darrell A. Downing
 Chair

 John L. Schlegel
 Secretary



M = Measured
 C = Calculated
 (A) = Assumed

BUILDING SETBACKS PER ZONING REGULATIONS



Ruggles & Bohm, P.A.
 Engineering, Surveying, Land Planning
 924 North Main (316) 264-0008
 Wichita, Kansas 67203 (316) 264-4821 fax
 www.rbkansas.com E-mail: info@rbkansas.com