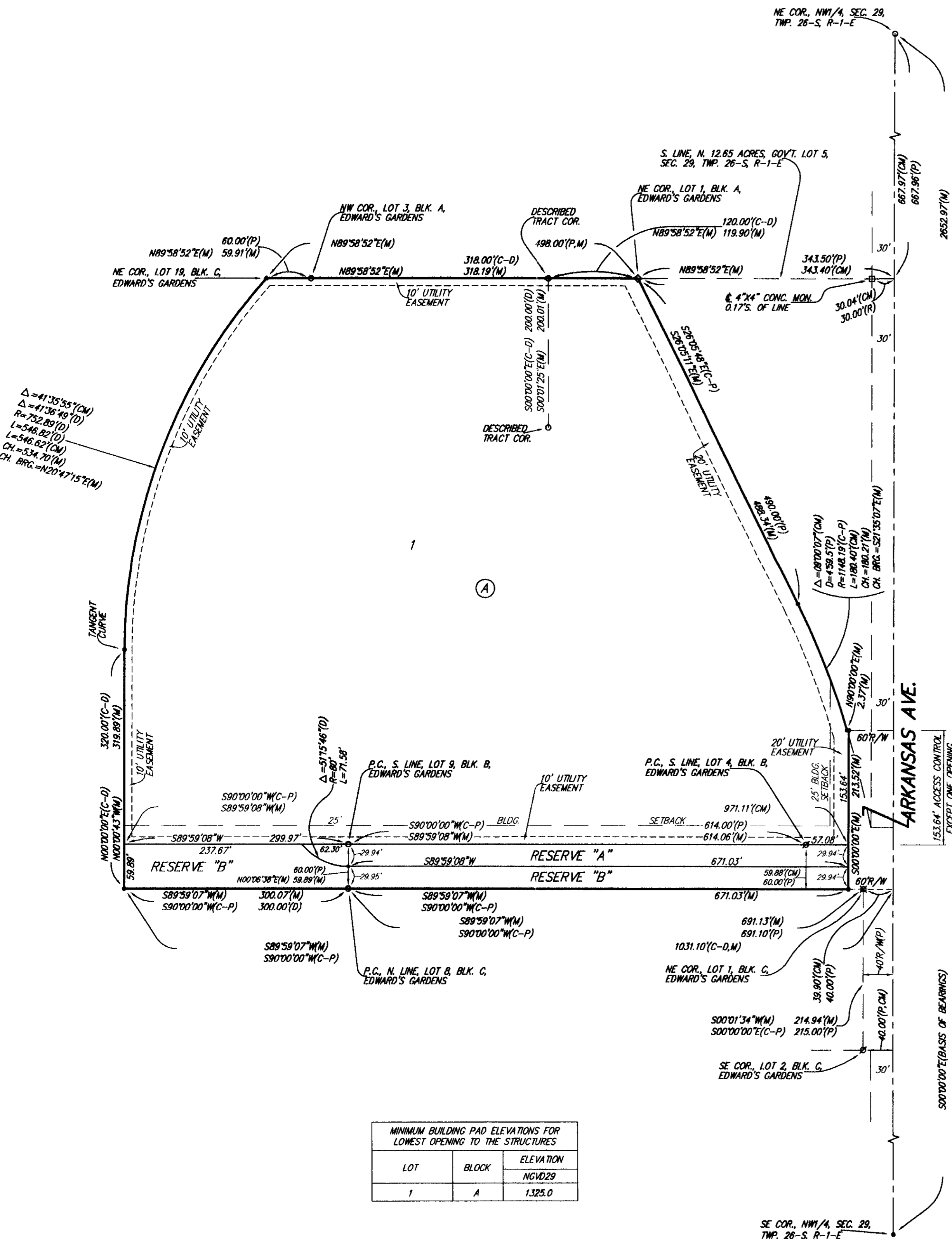


# EARHART ELEMENTARY SCHOOL ADDITION

## WICHITA, SEDGWICK COUNTY, KANSAS

FINAL TRACING REC'D  
FILE COPY

6-6-07  
June 2006-112



NOTE:  
"□" CUT ON CROSSWALK SIGNAL POLE BASE  
6.4' N. & 25.3' E. OF THE NE COR., SE1/4,  
NW1/4, SEC. 29, TWP. 26-S, R-1-E  
ELEV. = 1323.27 NGVD29

ARKANSAS AND DALE  
BRASS CAP ON WEST FACE OF WALK, EAST  
SIDE OF ARKANSAS ON NORTH END OF FLOOD  
CONTROL STRUCTURE  
300.00' N. OF DALE STREET  
ELEV. = 1322.91 NGVD29

NOTE:  
A master grading plan for drainage has been developed for this subdivision  
and is on file with the City of Wichita, Kansas. All drainage easements,  
right-of-ways, or reserves shall remain at established grades or as  
modified with the approval of the City Engineer of the City of Wichita,  
Kansas. No obstructions which impede the flow of this drainage system  
shall be allowed.

State of Kansas) SS We, Baughman Company, P.A., Surveyors in  
Sedgwick County) do hereby certify that we have surveyed and  
platted "EARHART ELEMENTARY SCHOOL ADDITION", Wichita, Sedgwick  
County, Kansas and that the accompanying plat is a true and correct  
exhibit of the property surveyed, described as Lots 1 and 2, except the  
west 54 feet of the north 200 feet of said Lot 2 and Lot 5, except the  
north 48 feet thereof, Block A, and Lots 1, 2, 3, 4, 5, 6, 7, 8, 9, 10, 11,  
12, 13, 14, and 15, Block B, and all of vacated 44th Street North lying  
east of the east line of Mascot Avenue extended north and all of vacated  
Interurban Drive lying north of the north line of 43rd Street extended east,  
and all of said 43rd Street lying west of the west line of Arkansas Ave.,  
all in Edward's Gardens, Sedgwick County, Kansas, together with that part  
of the South 52 feet of Government Lot 5 in the Northwest Quarter of  
Section 29, Township 26 South, Range 1 East of the Sixth Principal  
Meridian, Sedgwick County, Kansas, and lying east of the center line of the  
abandoned A.V.I. Railroad right-of-way and that part of the Southeast  
Quarter of the Northwest Quarter of said Section 29, lying east of the  
center line of the abandoned A.V.I. Railroad right-of-way, together with  
the west 54 feet of the north 200 feet of Lot 2 and the north 48 feet  
of Lot 5 and all of Lots 3 and 4, Block A, and that part of 44th Street  
North lying north of the south line of the north 48 feet of Lot 5,  
extended west and east of the east line of Mascot Avenue extended north,  
Edward's Gardens, Sedgwick County, Kansas, together with that part of  
Lots 10, 11, 12, 13, 14, 15, 16, 17, 18 and 19, Block C, Edward's Gardens,  
Sedgwick County, Kansas described as beginning at the NE corner of said  
Lot 19; thence S00°49'23"E along the west line of Mascot Avenue as  
platted in said Edward's Gardens, 710 feet to the P.C. of a curve to the  
left, having a radius of 110 feet; thence southerly along said curve and  
through a central angle of 27°02'08", 51.90 feet to the point of  
intersection with the north line of 43rd Street North as extended west;  
thence S89°10'37"W along said extended north line, 202.02 feet;  
thence N00°49'23"W, 260 feet to the P.C. of a curve to the right having a radius  
of 752.89 feet; thence northeasterly along said curve and through a  
central angle of 41°36'49", 546.82 feet to the place of beginning, and  
together with that part of Lots 8, 9, and 10, Block C, Edward's Gardens,  
Sedgwick County, Kansas described as follows: Commencing at the P.C.  
of a curve to the left in the east line of Lot 11 in said Block C; thence  
southerly along said curve, having a radius of 110.00 feet and through a  
central angle of 27°02'08", 51.90 feet to the point of intersection with the  
north line of 43rd Street North as extended west, and for a point of  
beginning; thence S89°10'37"W along said extended north line, 202.02 feet;  
thence S00°49'23"E parallel with the southerly extension of the west line  
of Mascot Avenue as platted in said Edward's Gardens, 60.00 feet to the  
intersection with the westerly extension of the south line of said 43rd  
Street North; thence N89°10'37"E along said extended south line, 300.00  
feet to the P.C. of a curve to the right in the north line of Lot 8 in said  
Block C; thence westerly and northwesterly along said curve, having a  
radius of 110.00 feet and through a central angle of 62°57'52", an arc  
distance of 120.88 feet to the point of beginning, and together with all  
of Mascot Avenue as platted in Edward's Gardens, Sedgwick County,  
Kansas, lying north of the north line of 43rd Street North extended west.  
Existing public easements and dedications  
being vacated by virtue of K.S.A. 12-512(b).

All being situated in the NW1/4 of  
Sec. 29, Twp. 26-S, R-1-E of the  
6th P.M., Sedgwick County, Kansas.

Baughman Company, P.A.  
Michael G. Conrey, Surveyor

Know all men by these presents that we,  
the undersigned, have caused the land in the surveyors certificate to be  
platted into a Lot, a Block, Streets, and Reserves to be known as  
"EARHART ELEMENTARY SCHOOL ADDITION", Wichita, Sedgwick County,  
Kansas. The utility easements are hereby granted as indicated for the  
construction and maintenance of all public utilities. The drainage and  
utility easements are hereby granted as indicated for drainage purposes  
and for the construction and maintenance of all public utilities. The  
streets are hereby dedicated to and for the use of the public. Reserves  
"A" and "B" are hereby reserved for open space, landscaping, drainage  
purposes, utilities, and access purposes to or from Arkansas Ave. over  
and across the south line of Lot 1, Block A, Earhart Elementary School  
Addition and over and across the north line of Lots 1, 3, 4, 5, 6, 7, 8, 9,  
and 10, Block C, Edwards Gardens, Sedgwick County, Kansas. Reserve "A"  
shall be owned and maintained by the owner of Lot 1, Block A, in said  
Earhart Elementary School Addition. Reserve "B" shall be owned and  
maintained by the owners of Lots 1, 3, 4, 5, 6, 7, 8, 9, and 10, Block C,  
in said Edwards Gardens. Access controls shall be as depicted on the  
face of the plat and are hereby granted to the City of Wichita, Kansas.  
The permitted opening locations shall be as determined by the City  
Engineer of the City of Wichita, Kansas. The Minimum Building Pad  
Elevations for the lowest opening to the structures shall be as indicated  
on the face of the plat.

Unified School District 259,  
Wichita, Sedgwick County, Kansas  
Sarah A. Skelton, President  
City of Wichita, Kansas, a Municipal Corporation

Attest: Carl Brewer, Mayor  
Karen Sublett, City Clerk

This plat of "EARHART ELEMENTARY SCHOOL  
ADDITION", Wichita, Sedgwick County, Kansas has been submitted to and  
approved by the Wichita-Sedgwick County Metropolitan Area Planning  
Commission, Wichita, Kansas.

Dated this 6th day of June, 2007,  
Wichita-Sedgwick County Metropolitan Area Planning Commission  
Darrell A. Downing, Chair  
John L. Schlegel, Secretary

This plat approved and all dedications  
shown hereon accepted by the City Council of the City of Wichita,  
Kansas, this 6th day of June, 2007.

Carl Brewer, Mayor  
Karen Sublett, City Clerk

Reviewed in accordance with K.S.A. 58-2005  
on this 6th day of June, 2007.

Tricia L. Robello, L.S. #1246  
Deputy County Surveyor  
Sedgwick County, Kansas

Entered on transfer record this 6th day  
of June, 2007.

Don Brace, County Clerk

State of Kansas) SS This is to certify that this plat has been  
Sedgwick County) filed for record in the office of the Register of Deeds, this 6th day  
of June, 2007 at 10 o'clock A.M. and is duly recorded.

Bill Meek, Register of Deeds

Tonya Buckingham, Deputy

State of Kansas) SS The foregoing instrument acknowledged before  
Sedgwick County) me, this 5th day of June, 2007, by Sarah Skelton, President of  
Unified School District 259, Wichita, Sedgwick County, Kansas, on behalf of  
the unified school district.

Luanne Freund, Notary Public

My App't. Exp. 9-7-2008

State of Kansas) SS The foregoing instrument acknowledged before  
Sedgwick County) me, this 6th day of June, 2007, by Carl Brewer, Mayor  
of the City of Wichita, Kansas, a Municipal Corporation, on behalf  
of the corporation.

My App't. Exp. \_\_\_\_\_

### EARHART ELEMENTARY SCHOOL

Baughman Company, P.A.  
315 Ellis St. Wichita, KS 67211 P 316-262-7271 F 316-262-0149  
Baughman INCORPORATED | SURVEYING | PLANNING | LANDSCAPE ARCHITECTURE  
E:\PLAT\EARHART ADDITION\DWG\EARHART.DWG\MGC