

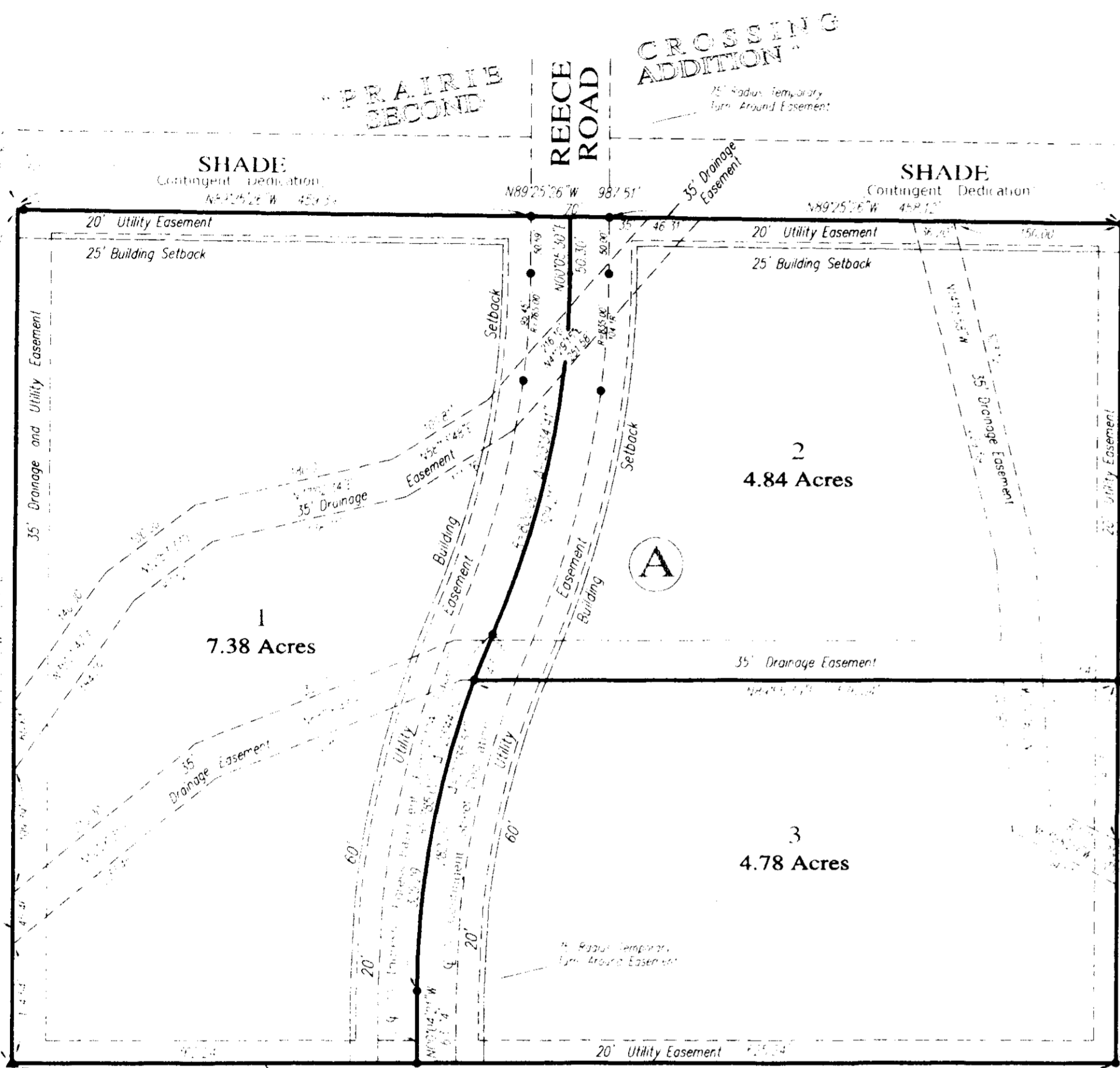
6-21-07
Sub 2005-145

FINAL PLAT OF

"MARTIN ESTATES SECOND ADDITION"

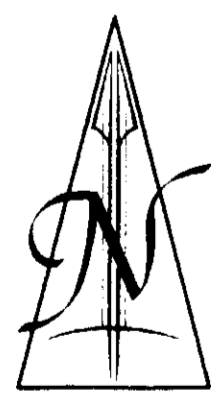
SEDGWICK COUNTY, KANSAS

IN THE NORTHEAST QUARTER OF SECTION 22,
TOWNSHIP 27 SOUTH, RANGE 2 WEST OF THE 6TH P.M.



Southwest Corner of the Northeast 1/4
of Section 22, T27S, R2W of the 6th P.M.

Southwest Corner of the Northeast Quarter
of Section 22, T27S, R2W of the 6th P.M.
Easement 3' x 6' x 7' Found



SCALE: 1" = 100'

- ▲ Section Corner Found as noted
 - #4 Rebar with 1/2" Cap
 - THSICLS22 Found
- Bearing Basis Assumed

BENCHMARK:

County Bench Mark, Railroad Spike
in High Line Pole 35' Northwest of
Northeast Corner of Section 22,
T27S, R2W of the 6th P.M.

This plat of "MARTIN ESTATES SECOND ADDITION", Sedgwick County, Kansas, has been submitted to and approved by the Wichita-Sedgwick County Metropolitan Area Planning Commission, Wichita, Kansas.

Dated this _____ day of _____, 2006.

WICHITA-SEDGWICK COUNTY
METROPOLITAN AREA PLANNING COMMISSION

_____, Chair
Darrell A. Downing

_____, Secretary
John L. Schlegel

Reviewed in accordance with K.S.A. 58-2005 on this _____ day of _____, 2007.

Tricia L. Robello, LS#1246
Deputy County Surveyor
Sedgwick County, Kansas



TERRA TECH
LAND SURVEYING, INC.

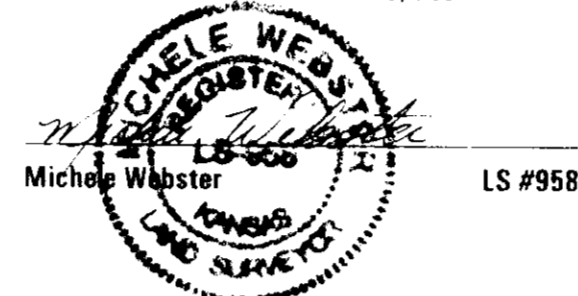
22200 W. 63rd St., S.
Viro, Kansas 67149
(316) 794-2863 / 794-3273
Fax (316) 794-3274

State of Kansas)
Sedgwick County) ss

Terra Tech Land Surveying, Inc., a corporation registered and authorized to practice Land Surveying in the State of Kansas, hereby certifies that it has surveyed and platted "MARTIN ESTATES SECOND ADDITION", Sedgwick County, Kansas, being a replat of "MARTIN ESTATES", an Addition to Sedgwick County, Kansas, and the accompanying plat is a true and correct exhibit of such re-survey formerly described as:

The West 987.47 feet of the Northeast Quarter of Section 22, Township 27 South, Range 2 West of the Sixth Principal Meridian, Sedgwick County, Kansas, EXCEPT the North 1896.77 feet thereof.

TERRA TECH LAND SURVEYING, INC.



January 19, 2007
Date

Know all men by these presents that the undersigned, owners of the land described in the Surveyor's Certificate, have caused the same to be re-surveyed and re-platted into Lots and a Block, to be known as "MARTIN ESTATES SECOND ADDITION", Sedgwick County, Kansas. The utility easements as shown hereon are hereby granted for the construction and maintenance of all public utilities. Drainage easements as shown hereon are hereby granted for the conveyance of stormwater. A drainage plan has been developed for this plat and all drainage easements, rights-of-way, or reserves shall remain at established grades or as modified with the approval of the applicable City or County Engineer, and unobstructed to allow for the conveyance of stormwater.

All lots, blocks, bundles, street dedications, contingent street dedications, temporary turn-around easements, utility easements, drainage easements, and building setbacks, as platted in "MARTIN ESTATES", an Addition to Sedgwick County, Kansas, are hereby vacated by virtue of K.S.A. 12-512(b) et. seq.

Bundle "A", "MARTIN ESTATES"
Now
Lot 1, Block A,
"MARTIN ESTATES SECOND ADDITION"

William J. Martin Anne M. Martin

State of Kansas)
Sedgwick County) ss

This instrument was acknowledged before me this _____ day of _____, 2007,
by William J. Martin and Anne M. Martin.

_____, Notary Public
Jeremy Mock
My Commission Expires: _____

Bundle "B", "MARTIN ESTATES"
Now
Lot 2, Block A, "MARTIN ESTATES SECOND ADDITION"

Mike C. Martin Lisa A. Martin

State of Kansas)
Sedgwick County) ss

This instrument was acknowledged before me this _____ day of _____, 2007,
by Mike C. Martin and Lisa A. Martin.

_____, Notary Public
Jeremy Mock
My Commission Expires: _____

Bundle "C", "MARTIN ESTATES"
Now
Lot 3, Block A, "MARTIN ESTATES SECOND ADDITION"

Thomas J. Martin Jo E. Martin

State of Kansas)
Sedgwick County) ss

This instrument was acknowledged before me this _____ day of _____, 2007,
by Thomas J. Martin and Jo E. Martin.

_____, Notary Public
Jeremy Mock
My Commission Expires: _____

This plat approved and all dedications shown hereon are accepted by the City Council of the City of Wichita, Kansas, this _____ day of _____, 2007.

WICHITA CITY COUNCIL

_____, Mayor
Carl Brewer

_____, City Clerk
Karen Sublett

State of Kansas)
County of Sedgwick) ss

The dedications shown on the plat, if any, are hereby accepted by the Board of County Commissioners, Sedgwick County, Kansas, on _____, 2007.

_____, Commission Chairman
David M. Unruh

_____, County Clerk
Donald Brace

Entered on transfer record this _____ day of _____, 2007.

_____, County Clerk
Donald Brace

State of Kansas)
Sedgwick County) ss

This is to certify that this instrument was filed for record in the Register of Deeds Office, at _____ o'clock _____ M., on the _____ day of _____, 2007.

_____, Register of Deeds
Bill Meek

_____, Deputy
Tonya Buckingham