

NORTHRIDGE INDUSTRIAL THIRD ADDITION WICHITA, SEDGWICK COUNTY, KANSAS

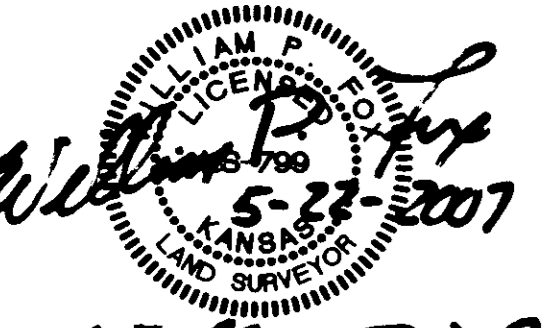
FINAL TRACING REC'D

State of Kansas) ss
Sedgwick County)

I, the undersigned licensed land surveyor in aforesaid county and state, do hereby certify that, under the supervision of the undersigned, we, Poe and Associates, Inc. have surveyed and platted "NORTHRIDGE INDUSTRIAL THIRD ADDITION", Wichita, Sedgwick County, Kansas and that the accompanying plat is a true and correct exhibit of the property surveyed, described as follows:

Parcel 1:
The West 350 feet of the North Half of the Northeast Quarter of Section 34, Township 26 South, Range 1 East of the Sixth Principal Meridian, Sedgwick County, Kansas, EXCEPT that part platted as Northridge Industrial Park Addition to Wichita, Sedgwick County, Kansas.

Existing public dedications, rights of way, and easements being vacated by virtue of K.S.A. 12-512(b).


William P. Fox, Surveyor
William P. Fox, L.S. # 799

State of Kansas) ss
Sedgwick County)

Know all men by these presents that we, the undersigned, have caused the land described in the surveyor's certificate to be platted into a Lot and a Block, to be known as "NORTHRIDGE INDUSTRIAL THIRD ADDITION", Wichita, Sedgwick County, Kansas. The utility easements are hereby granted as indicated for constructing, maintaining, operating, and repairing utilities. The vacation of the temporary cul-de-sac will be effective upon the extension of Poplar Street southward.

A drainage plan has been developed for the plat. All drainage easements, and/or right-of-ways, shall remain at established grades, or as modified with the approval of the applicable City or County Engineer, and unobstructed to allow for the conveyance of stormwater.

Leslie G. Rudd
Leslie G. Rudd

State of Kansas) ss
Sedgwick County)

BE IT REMEMBERED that on this 27th day of June, 2007, before me, the undersigned, a notary public in and for the County and State aforesaid came Leslie G. Rudd, to me personally known to be the same person who executed this instrument and such person duly acknowledged the execution of the same.

IN WITNESS WHEREOF, I have hereunto set my hand and affixed my official seal the day and year first above written.

Janie L. Graham
Notary Public JANIE L. GRAHAM

11-13-09
My Appointment expires:

State of Kansas) ss
Sedgwick County)

This plat of "NORTHRIDGE INDUSTRIAL THIRD ADDITION", Wichita, Sedgwick County, Kansas has been submitted to and approved by the Wichita/Sedgwick County Metropolitan Area Planning Commission, Wichita, Kansas.

Dated this _____ day of _____, 2007.
Wichita/Sedgwick County Metropolitan Area Planning Commission.

_____, Chair
Darrel A. Downing

_____, Secretary
John L. Schlegel

State of Kansas) ss
City of Wichita)

This plat approved and all dedications shown hereon accepted by the City Council of the City of Wichita, Kansas, this _____ day of _____, 2007. At the Direction of the City Council.

_____, Mayor
Carl Brewer

_____, City Clerk
Karen Sublett

Entered on transfer record this _____ day of _____, 2007.

_____, County Clerk
Don Brace

State of Kansas) ss
Sedgwick County)


This is to certify that this instrument was filed for record in the Register of Deeds office at _____ o'clock _____ .m., on the _____ day of _____, 2007, and is duly recorded.

_____, Register of Deeds
Bill Meek

_____, Deputy
Tonya Buckingham

State of Kansas) ss
Sedgwick County)

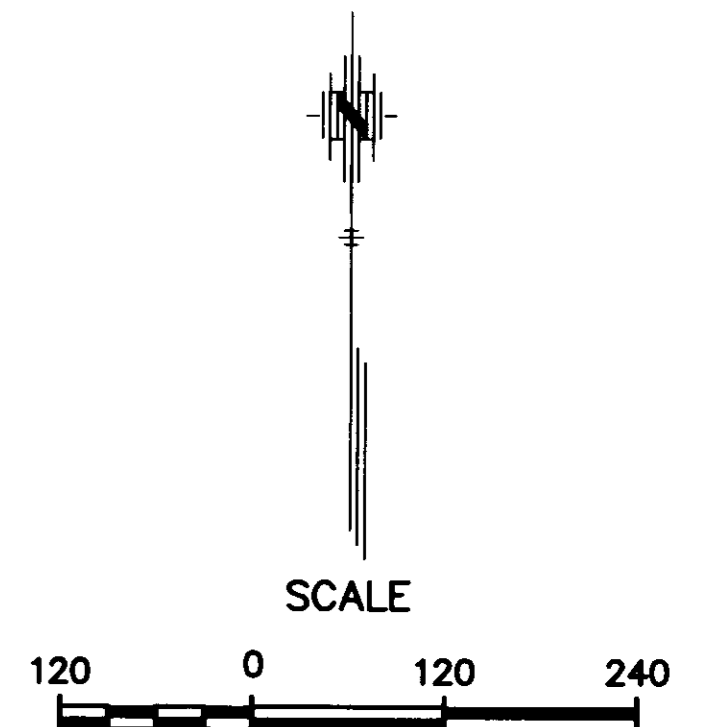
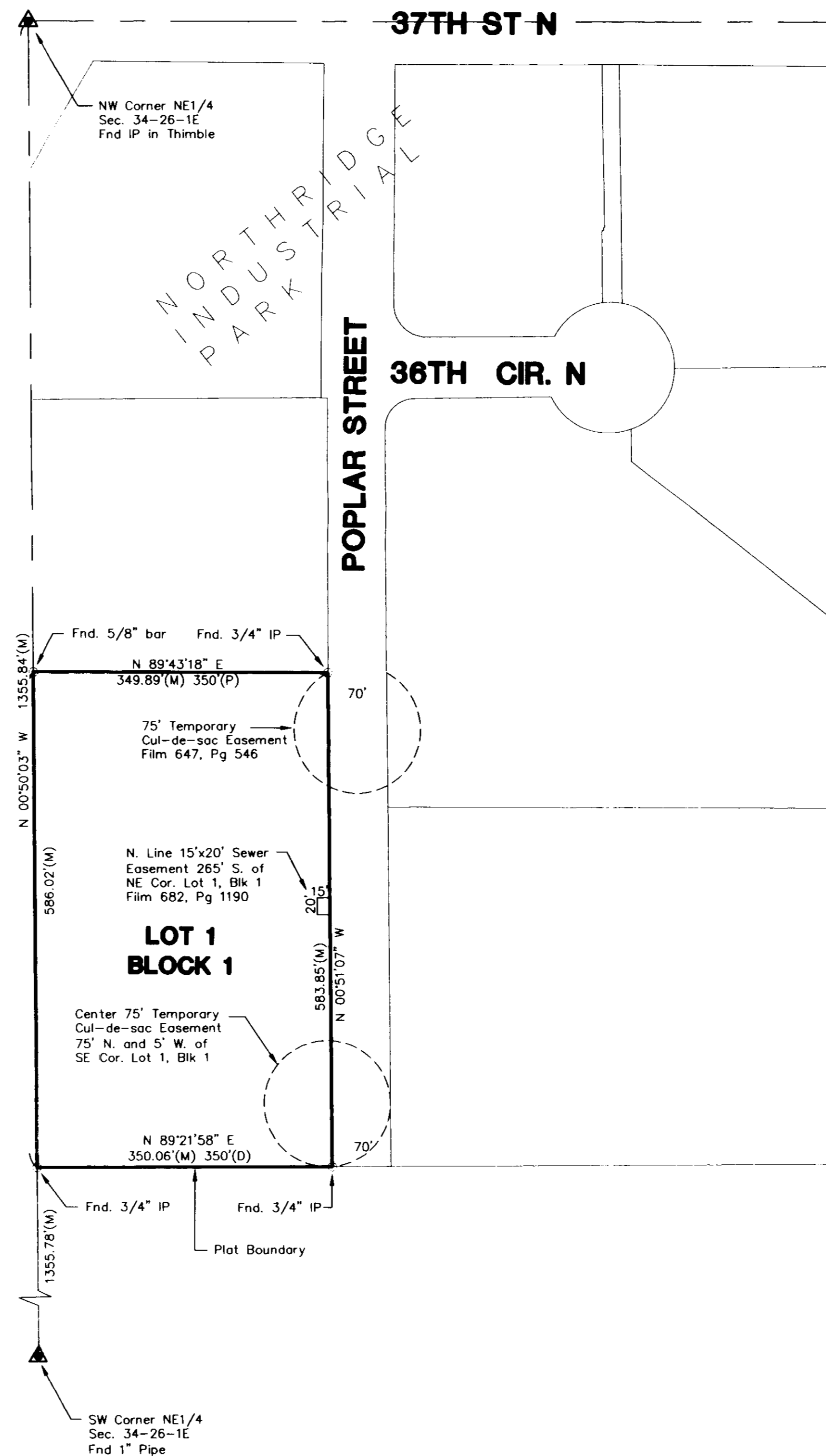
Reviewed in accordance with K.S.A. 58-2005 on this 23rd day of _____, 2007.


Tricia L. Robello, L.S. # 1246
Deputy County Surveyor
Sedgwick County, Kansas

BENCH MARKS

City of Wichita Datum

1. City of Wichita Disc on Concrete traffic signal pole base @ S.E. corner of 37th & Hillside.
Elev. = 165.35 City Datum
Elev. = 1352.75 NGVD29 Datum
2. City of Wichita Disc 2.5' W. of E. end of N. hubguard of 3-RCB under 37th St. W. of centerline of Hillside.
Elev. = 157.85 City Datum
Elev. = 1345.25 NGVD29 Datum
3. "□" cut on median curb @ centerline of Poplar 54' S. of centerline of 37th.
Elev. = 163.64 City Datum
Elev. = 1351.04 NGVD29 Datum
4. "□" cut on N.E. corner concrete pad for electric transformer box W. of yellow building @ 2525 E, 36th St., Suite B.
Elev. = 154.80 City Datum
Elev. = 1342.20 NGVD29 Datum



LEGEND

- ▲ Section corner found
- Point found
- (M) Measured distance
- (D) Deed distance