

CITY HALL COMPLEX ADDITION

Wichita, Sedgwick County, Kansas

This plat of "CITY HALL COMPLEX ADDITION", Wichita, Sedgwick County, Kansas, has been submitted to and approved by the Wichita-Sedgwick County Metropolitan Area Planning Commission, Wichita, Kansas.

Dated this _____ day of _____, 2007.

Wichita-Sedgwick County Metropolitan Area Planning Commission

Darrell A. Downing Chair

John L. Schlegel Secretary

This plat approved and all dedications shown hereon accepted by the City Council of the City of Wichita, Kansas, this _____ day of _____, 2007.

At the Direction of the City Council

Carl Brewer Mayor

Karen Sublett City Clerk

Reviewed in accordance with K.S.A. _____ this _____ day of _____, 2007.

Tricia L. Robello, LS #1246 Deputy County Surveyor Sedgwick County Kansas

Entered on transfer record this _____ day of _____, 2007.

Don Brace County Clerk

State of Kansas) Sedgwick County) SS

This is to certify that this plat has been filed for record in the office of the Register of Deeds, this _____ day of _____, 2007, at _____ o'clock _____ M., and is duly recorded.

Bill Meek Register of Deeds

Tonya Buckingham Deputy

Know all men by these presents that we, the undersigned, have caused the land described in the surveyor's certificate to be platted into a Lot and a Block, to be known as "CITY HALL COMPLEX ADDITION", Wichita, Sedgwick County, Kansas. Access Controls as indicated are hereby granted to the appropriate governing body. The Utility Easement is hereby granted to the public as indicated for drainage purposes. A drainage plan has been developed for this plat; the property shall remain at established grades, or as modified with the approval of the City Engineer, and unobstructed to allow for the conveyance of storm water.

City of Wichita, a Municipal Corporation

Carl Brewer Mayor

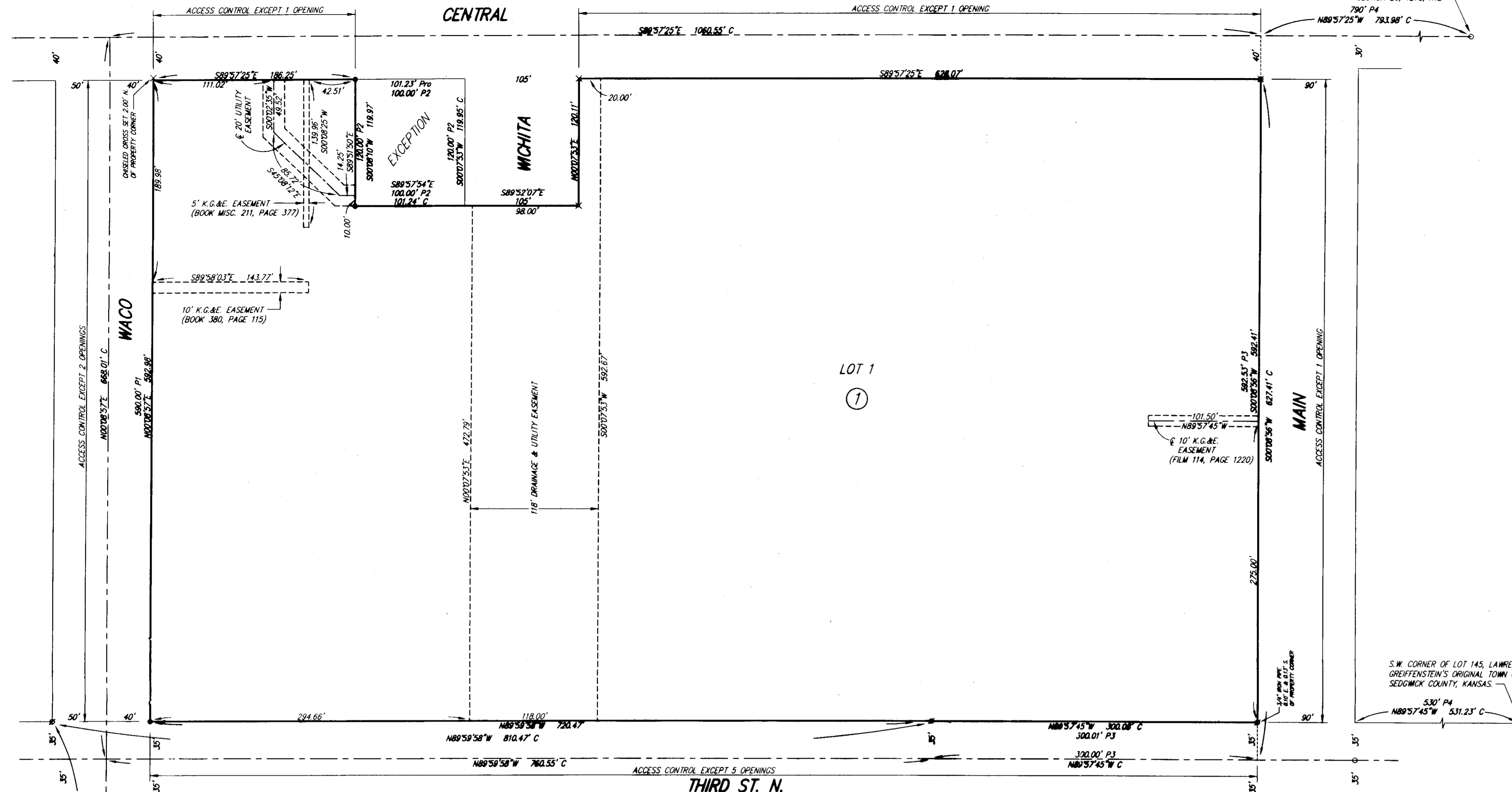
Karen Sublett City Clerk

State of Kansas) Sedgwick County) SS

Be it remembered that on this _____ day of _____, 2007, before me, Notary Public in aforesaid state and county, came Carl Brewer, Mayor; and Karen Sublett, City Clerk, of the City of Wichita, a Municipal Corporation, to me personally known to be the same persons who executed the foregoing instrument of writing and duly acknowledge the execution of same, for and on behalf and as the voluntary act and deed of said municipal corporation, in testimony whereof I have hereunto set my hand and affixed my Notarial Seal the day and year above written.

Notary Public

My appointment expires _____



State of Kansas) Sedgwick County) SS

We, Ruggles & Bohm, P.A., Land Surveyors in aforesaid county and state, do hereby certify that, under the supervision of the undersigned, we have surveyed and platted "CITY HALL COMPLEX ADDITION", Wichita, Sedgwick County, Kansas, and that the accompanying plat is a true and correct exhibit of the property surveyed, described as follows:

Block 1, Administrative Center Addition, Wichita, Sedgwick County, Kansas; Large Lot No. 2, Waterman's Addition to Wichita (Sedgwick County, Kansas), EXCEPT that part platted as Center Addition to Wichita (Sedgwick County, Kansas), AND EXCEPT that part platted as Shields' Addition to Waterman's Addition to Wichita (Sedgwick County, Kansas), AND EXCEPT that part platted as United Addition to Wichita (Sedgwick County, Kansas); TOGETHER WITH all of Center Addition to Wichita (Sedgwick County, Kansas); all of Shields' Addition to Waterman's Addition to Wichita (Sedgwick County, Kansas); Lots all of United Addition to Wichita (Sedgwick County, Kansas); AND Wichita Street between the north right-of-way line of Third Street and the south right-of-way line of Central Avenue, EXCEPT that part described as beginning at the N.E. corner of Lot 4, Center Addition to Wichita (Sedgwick County, Kansas); thence S00°07'53"W, along the east line of said Lot 4, 119.95 feet to the S.E. corner of said Lot 4; thence S89°52'07"E, 105.00 feet; thence N00°07'53"E, parallel with said east line, 120.11 feet; thence N89°57'25"W, thence N89°57'25"W, 105.00 feet to the place of beginning.

All public easements and dedications are hereby vacated by virtue of K.S.A. 12-512(b).

Ruggles & Bohm, P.A.

Thomas C. Ruggles Land Surveyor

PROPERTY CORNER LEGEND

- NAIL IN THIMBLE (FOUND-ORIGIN UNKNOWN)
- ⊗ 3/4" IRON PIPE (FOUND-ORIGIN UNKNOWN)
- ⊗ 3/4" IRON PIPE IN THIMBLE (FOUND-ORIGIN UNKNOWN)
- 1/2" REBAR W/BAUGHMAN CAP (FOUND)
- × CHISELED CROSS (SET)
- MAG NAIL (SET)
- 1/2" REBAR W/R&B CAP (SET)
- 5/8" REBAR W/R&B CAP (SET)

BENCH MARK: SQUARE CUT ON TOP OF CURB AT S.E. CORNER OF CONC. SLAB ON NORTH SIDE OF WHEAT STATUE, SOUTH SIDE OF CENTRAL AVE. ELEVATION = 1300.97 (NGVD29)

BENCH MARK: SQUARE CUT ON TOP OF CURB AT THE CENTER OF THE EAST END OF THE MEDIAN AT THE CENTERLINE OF CENTRAL, 136' EAST OF WACO ELEVATION = 1299.54 (NGVD29)

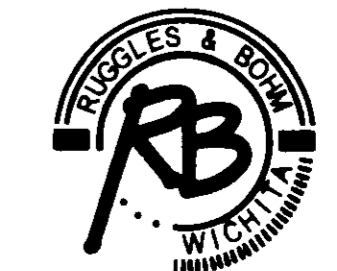
BENCH MARK: SQUARE CUT AT THE S.E. CORNER OF CONCRETE TRAFFIC SIGNAL BASE, N.W. CORNER OF MAIN STREET AND 3RD STREET NORTH ELEVATION = 1299.89 (NGVD29)

BUILDING SETBACK PER ZONING REGULATIONS

1" = 60'

(A) = ASSUMED
P = PLATTED (FARM CREDIT BANKS OF WICHITA ADD + MAP OF WATERMANS ADD TO WATERMANS ADD)
P1 = PLATTED (WATERMAN'S ADDITION)
P2 = PLATTED (CENTER ADDITION)
P3 = PLATTED (ADMINISTRATIVE CENTER ADDITION)
P4 = PLATTED (GRIFFENSTEIN'S ORIGINAL TOWN OF WICHITA)
C = CALCULATED
M = MEASURED

S.E. CORNER, LOT 1, BLOCK 1, FARM CREDIT BANKS OF WICHITA ADDITION, WICHITA (SEDGWICK COUNTY), KANSAS.



Ruggles & Bohm, P.A.
Engineering, Surveying, Land Planning
924 North Main (316) 264-8008
Wichita, Kansas 67203 (316) 264-4621 fax
www.rbkansas.com E-mail: info@rbkansas.com

DWG FILE: FINAL PLAT
PROJECT NO. 3033P
AUGUST 21, 2007