


ROCKY FORD INDUSTRIAL PARK

SEDGWICK COUNTY, KANSAS

State of Kansas) SS We, Baughman Company, P.A., Surveyors in
Sedgwick County) and state do hereby certify that we have surveyed and
platted "ROCKY FORD INDUSTRIAL PARK", Sedgwick County, Kansas and
that the accompanying plat is a true and correct exhibit of the property
surveyed, described as the S1/2 of the NW1/4 of Sec. 8, Twp. 28-S,
R-2-E of the 6th P.M., EXCEPT the east 118.50 feet thereof, all being
subject road rights-of-way of record.

Existing public easements and dedications
being vacated by virtue of K.S.A. 12-512(b).

Baughman Company, P.A.


Michael G. Conrey, Surveyor
Michael G. Conrey

We the undersigned holders of a mortgage on the
above described property, do hereby consent to this plat of "ROCKY
FORD INDUSTRIAL PARK", Sedgwick County, Kansas.

Legacy Bank

Steve Gagen, VP
STEVE GAGEN (Title)

This plat of "ROCKY FORD INDUSTRIAL PARK",
Sedgwick County, Kansas has been submitted to and approved by the
Wichita-Sedgwick County Metropolitan Area Planning Commission, Wichita,
Kansas.

Dated this _____ day of _____, 2007.
Wichita-Sedgwick County Metropolitan Area Planning Commission

_____, Chair
Darrell A. Downing

_____, Secretary
John L. Schlegel

This plat approved and all dedications
shown hereon accepted by the Board of Commissioners of
Sedgwick County, Kansas, this _____ day of _____, 2007.

_____, Chairman
Dave Unruh

ATTEST: _____, County Clerk
Don Brace

This plat approved and all dedications
shown hereon accepted by the City Council of the City of Wichita,
Kansas, this _____ day of _____, 2007.

_____, Mayor
Carl Brewer

_____, City Clerk
Karen Sublett

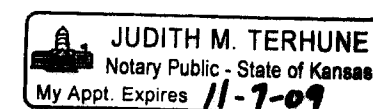
Reviewed in accordance with K.S.A. 58-2005
on this _____ day of _____, 2007.

Tricia L. Robello, L.S. #1246
Deputy County Surveyor
Sedgwick County, Kansas

Entered on transfer record this _____ day
of _____, 2007.

_____, County Clerk
Don Brace

State of Kansas) SS The foregoing instrument acknowledged before me,
Sedgwick County) this 19th day of NOVEMBER, 2007, by Rob Ramseyer, Vice-President
of Ritchie Associates, Inc., as Manager of 31st South Rock Investments, LLC,
a Kansas limited liability company, on behalf of the limited liability company.



Judith M. Terhune, Notary Public
JUDITH M. TERHUNE

My App't. Exp. 11-7-09

State of Kansas) SS This is to certify that this plat has been
Sedgwick County) filed for record in the office of the Register of Deeds, this _____ day
of _____, 2007 at _____ o'clock _____ M.; and is duly recorded.

_____, Register of Deeds
Bill Meek

_____, Deputy
Tonya Buckingham

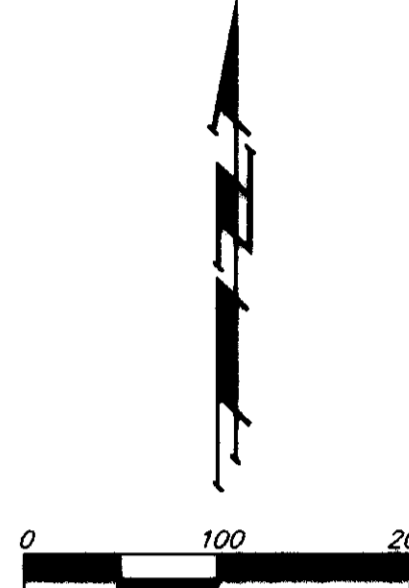
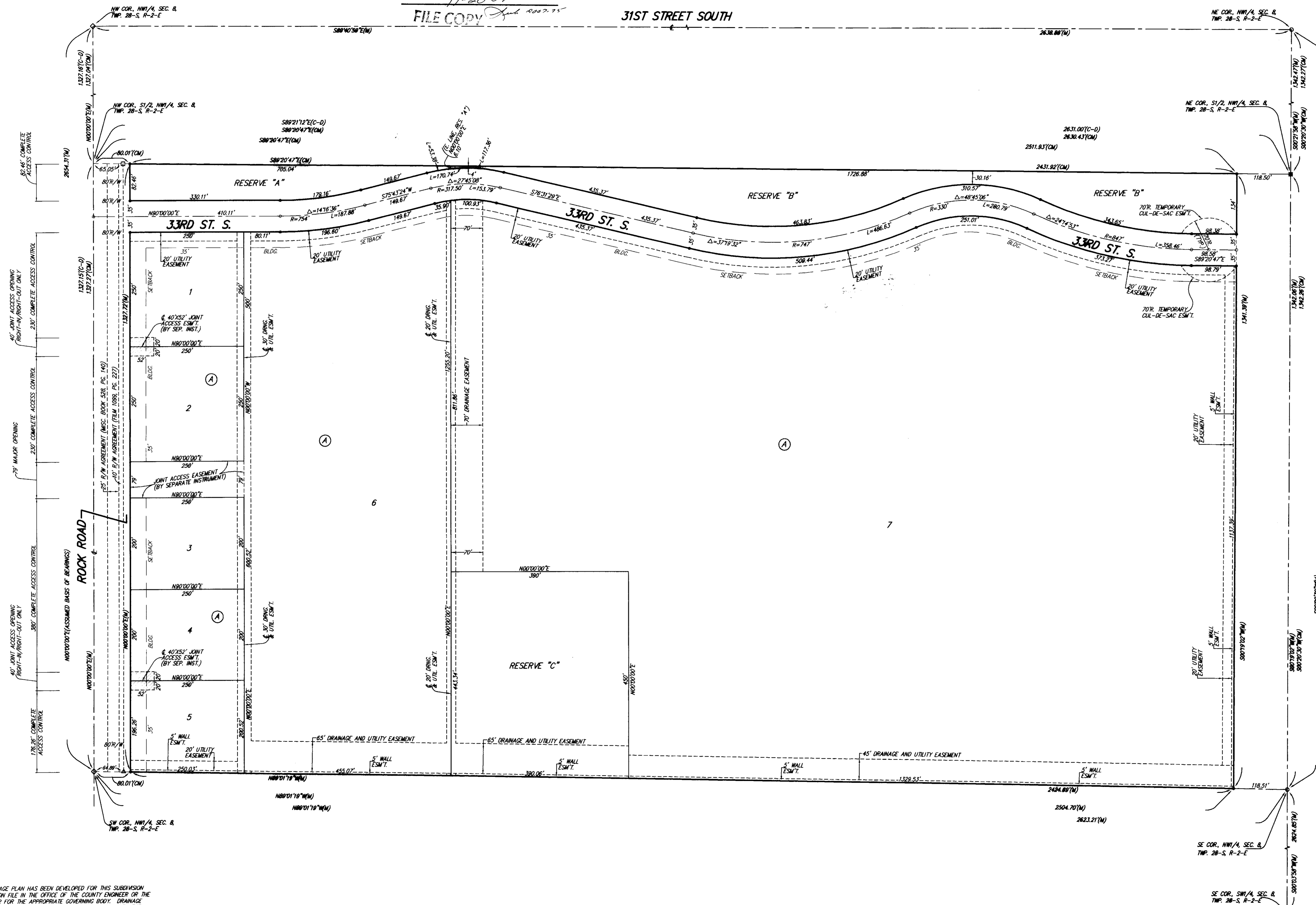
ROCKY FORD INDUSTRIAL PARK

SEDGWICK COUNTY, KANSAS

FINAL TRACING REC'D

11-20-07
FILE COPY

31ST STREET SOUTH



NOTE:
ADDITIONAL BUILDING SETBACK REQUIREMENTS PER ROCKY FORD
COMMERCIAL COMMUNITY UNIT PLAN (CUP 2007-49/DP-300)

- #4 REBAR W/ "BAUGHMAN" CAP (SET)
- ◊ #5 REBAR (FOUND)
- #4 REBAR (FOUND)
- ◻ #5 REBAR W/ "MKEC" CAP (FOUND)
- ◼ #4 REBAR W/ "MKEC" CAP (FOUND)
- STONE (FOUND)
- 1" IRON PIPE (FOUND)

(M) = MEASURED
(CM) = CALCULATED PER
MEASURED INFO
(C-D) = CALCULATED PER
DESCRIBED INFO

BENCHMARK:
ROCK ROAD & 600'± SOUTH OF 31ST STREET
SOUTH, CITY OF WICHITA BENCHMARK DISK, SOUTH
END OF HURD ROAD ON THE SW COR. OF R.C.B.C.
ELEV. = 1367.44 NOV029

MINIMUM BUILDING PAD ELEVATIONS FOR LOWEST OPENING TO THE STRUCTURES		
LOT	BLOCK	ELEVATION
6, 7	A	1373.0

NOTE:
A DRAINAGE PLAN HAS BEEN DEVELOPED FOR THIS SUBDIVISION
AND IS ON FILE IN THE OFFICE OF THE COUNTY ENGINEER OR THE
ENGINEER FOR THE APPROPRIATE GOVERNING BODY. DRAINAGE
INTENT SHALL REMAIN AS DEPICTED OR AS MODIFIED WITH THE
APPROVAL OF THE COUNTY ENGINEER OR THE ENGINEER FOR THE
APPROPRIATE GOVERNING BODY. NO OBSTRUCTIONS WHICH
IMPEDE THE FLOW OF THIS DRAINAGE PLAN SHALL BE ALLOWED.