

CROSS POINTE 2ND

AN ADDITION TO WICHITA, SEDGWICK COUNTY, KANSAS

REVISED 11/2

FINAL TRACING RECORD

12-5-07

STATE OF KANSAS)
) SS
COUNTY OF SEDGWICK)

WE, PROFESSIONAL ENGINEERING CONSULTANTS, P.A., ENGINEERS AND SURVEYORS IN AFORESAID STATE AND COUNTY, DO HEREBY CERTIFY THAT OF

THIS 20TH DAY OF NOVEMBER, 2007, WE HAVE SURVEYED

AND PLATTED CROSS POINTE 2ND, AN ADDITION TO WICHITA, SEDGWICK COUNTY, KANSAS, INTO LOTS, BLOCKS, RESERVES, AND A STREET THE SAME BEING DESCRIBED AS FOLLOWS:

PARCEL 1:
LOTS 1, 2, 3, 4, 7, 8, 9, 11, 12, 13, AND THE EAST 142.00 FEET OF LOT 6, BLOCK 1, AND RESERVES A AND B, CROSS POINTE, AN ADDITION TO WICHITA, SEDGWICK COUNTY, KANSAS.

PARCEL 2:
LOT 2, BLOCK A, EASTSIDE COMMUNITY CHURCH ADDITION TO WICHITA, SEDGWICK COUNTY, KANSAS.

ALL PUBLIC EASEMENTS LYING WITHIN THE ABOVE DESCRIBED TRACT OF LAND ARE HEREBY VACATED AND REPLATTED BY VIRTUE OF KSA 12-512(b) AMENDED.

JAMES R. BECKETT, R.L.S. NO. 832
PROFESSIONAL ENGINEERING CONSULTANTS, P.A.

THIS ADDITION IS SUBJECT TO THE CONDITIONS OF CROSS POINTE COMMUNITY UNIT PLAN (DP-279).

FOR ADDITIONAL INFORMATION AND BUILDING SETBACK LINES SEE C.U.P. DP-279 ON FILE AT THE WICHITA-SEDGWICK COUNTY METROPOLITAN AREA PLANNING DEPARTMENT, WICHITA, KANSAS.

THE 5' WALL EASEMENTS ALONG SOUTH LINE OF LOT 1, BLOCK 1 AND RESERVE "A", AS WELL AS THE WEST LINE OF LOT 7, BLOCK 1, AS SHOWN, ARE HEREBY PLATTED FOR THE CONSTRUCTION AND MAINTENANCE OF A PRIVATE WALL. UTILITIES MAY CROSS THE WALL EASEMENT.

THE STREETS ARE HEREBY DEDICATED TO AND FOR THE USE OF THE PUBLIC.

EASEMENTS FOR THE CONSTRUCTION AND MAINTENANCE OF PUBLIC UTILITIES ARE HEREBY GRANTED.

FEMA FLOOD PLAIN AND REGULATORY FLOODWAY BOUNDARIES ARE SUBJECT TO PERIODIC CHANGE, AND SUCH CHANGE MAY AFFECT THE INTENDED LAND USE WITHIN THE SUBDIVISION.

RESERVE "A" IS HEREBY PLATTED FOR DRAINAGE, LAKES, WALLS, FENCES, LANDSCAPING, SIDEWALKS, VEHICULAR SERVICE DRIVES, AND UTILITIES CONFINED TO EASEMENTS. RESERVES "B", "C", "D", "E", AND "F" ARE HEREBY PLATTED FOR LANDSCAPING, SIGNS, DRAINAGE, SIDEWALKS, AND UTILITIES CONFINED TO EASEMENTS. RESERVES "D" AND "F" SHALL ALLOW FOR PUBLIC ACCESS ACROSS AT VARIOUS LOCATIONS FOR DRIVEWAYS, AS APPROVED BY THE CITY ENGINEER. RESERVES "A" THRU "F" SHALL BE OWNED AND MAINTAINED BY AN OWNER'S ASSOCIATION TO BE FORMED WITHIN CROSS POINTE 2ND.

ALL ADJUTTER'S RIGHT OF ACCESS TO AND FROM 21ST ST. NORTH OVER AND ACROSS THE NORTH PROPERTY LINE AND TO AND FROM GREENWICH ROAD OVER AND ACROSS THE WEST PROPERTY LINE IS HEREBY GRANTED TO THE CITY OF WICHITA. PROVIDED HOWEVER THAT THERE SHALL BE ACCESS TO 21ST STREET NORTH AT SIX LOCATIONS AS SHOWN, AND ACCESS TO GREENWICH ROAD AT THREE LOCATIONS AS SHOWN.

MINIMUM PAD ELEVATIONS (LOWEST OPENING) SHALL BE AS FOLLOWS:

BLOCK 1	ELEVATION (N.G.V.D.)	City Datum
LOT 1	1364.50	177.10
LOT 2	1366.00	178.60
LOT 4	1366.00	178.60
LOT 6	1362.00	174.60
LOT 7	1368.00	170.60
BLOCK 2		
LOT 1	1366.00	177.60

A DRAINAGE PLAN HAS BEEN APPROVED FOR THIS PLAT. ALL DRAINAGE EASEMENTS, RIGHTS-OF-WAY, OR RESERVES SHALL REMAIN AT ESTABLISHED GRADES AND UNOBSTRUCTED TO ALLOW FOR THE CONVEYANCE OF STORM WATER, UNLESS MODIFIED WITH THE APPROVAL OF THE CITY ENGINEER.

KNOW ALL MEN BY THESE PRESENTS THAT WE, THE UNDERSIGNED PROPERTY OWNERS OF THE LAND AS ABOVE SET FORTH IN THE SURVEYOR'S CERTIFICATE, HAVE CAUSED THE LAND TO BE SURVEYED AND PLATTED INTO LOTS, BLOCKS, AND RESERVES; THE SAME TO BE KNOWN AS CROSS POINTE 2ND, AN ADDITION TO WICHITA, SEDGWICK COUNTY, KANSAS.

OWNER:
SLAWSON EAST, INC., A KANSAS CORPORATION

JERRY D. JONES, VICE PRESIDENT OF MARKETING

STATE OF KANSAS)
) SS
COUNTY OF SEDGWICK)

THIS INSTRUMENT WAS ACKNOWLEDGED BEFORE ME ON THIS 20TH DAY OF

NOVEMBER, 2007, BY JERRY D. JONES, VICE PRESIDENT OF MARKETING OF SLAWSON EAST, INC., A KANSAS CORPORATION.

SARAH E. MATSTRUP, NOTARY PUBLIC

MY APPOINTMENT EXPIRES: December 16, 2008

WE, INTRUST BANK, N.A., HOLDER OF A MORTGAGE ON THE ABOVE DESCRIBED PROPERTY, DO HEREBY CONSENT TO THE PLATTING OF CROSS POINTE 2ND, AN ADDITION TO WICHITA, SEDGWICK COUNTY, KANSAS.

ROGER G. EASTWOOD, SENIOR VICE PRESIDENT

STATE OF KANSAS)
) SS
COUNTY OF SEDGWICK)

THIS INSTRUMENT WAS ACKNOWLEDGED BEFORE ME ON THIS 21ST DAY OF NOVEMBER, 2007, BY ROGER G. EASTWOOD, SENIOR VICE PRESIDENT OF INTRUST BANK, N.A.

MELINDA A. SPIES, NOTARY PUBLIC

MY APPOINTMENT EXPIRES: 2/18/11

THIS PLAT OF CROSS POINTE 2ND HAS BEEN SUBMITTED TO AND APPROVED BY THE WICHITA-SEDGWICK COUNTY METROPOLITAN AREA PLANNING COMMISSION, WICHITA, KANSAS.

DATED THIS _____ DAY OF _____, 2007.

WICHITA-SEDGWICK COUNTY METROPOLITAN AREA PLANNING COMMISSION

_____, CHAIR
M.S. MITCHELL

_____, SECRETARY
JOHN L. SCHLEGEL

REVIEWED IN ACCORDANCE WITH K.S.A. 58-2005 ON THIS 3rd DAY OF December, 2007.

TRICIA L. ROBELLO, LS #1246
DEPUTY COUNTY SURVEYOR
SEDGWICK COUNTY KANSAS

THIS PLAT IS APPROVED AND ALL DEDICATIONS SHOWN HEREON, IF ANY ARE ACCEPTED BY THE CITY COUNCIL OF THE CITY OF WICHITA, KANSAS, THIS _____ DAY OF _____, 2007.

_____, MAYOR
CARL BREWER

_____, CITY CLERK
KAREN SUBLETT

ENTERED ON TRANSFER RECORD THIS _____ DAY OF _____, 2007.

_____, COUNTY CLERK
DONALD BRACE

THIS IS TO CERTIFY THAT THIS INSTRUMENT WAS FILED FOR RECORD IN THE REGISTER OF DEEDS OFFICE AT _____ M., ON THE _____ DAY OF _____, 2007.

_____, REGISTER OF DEEDS
BILL MEEK

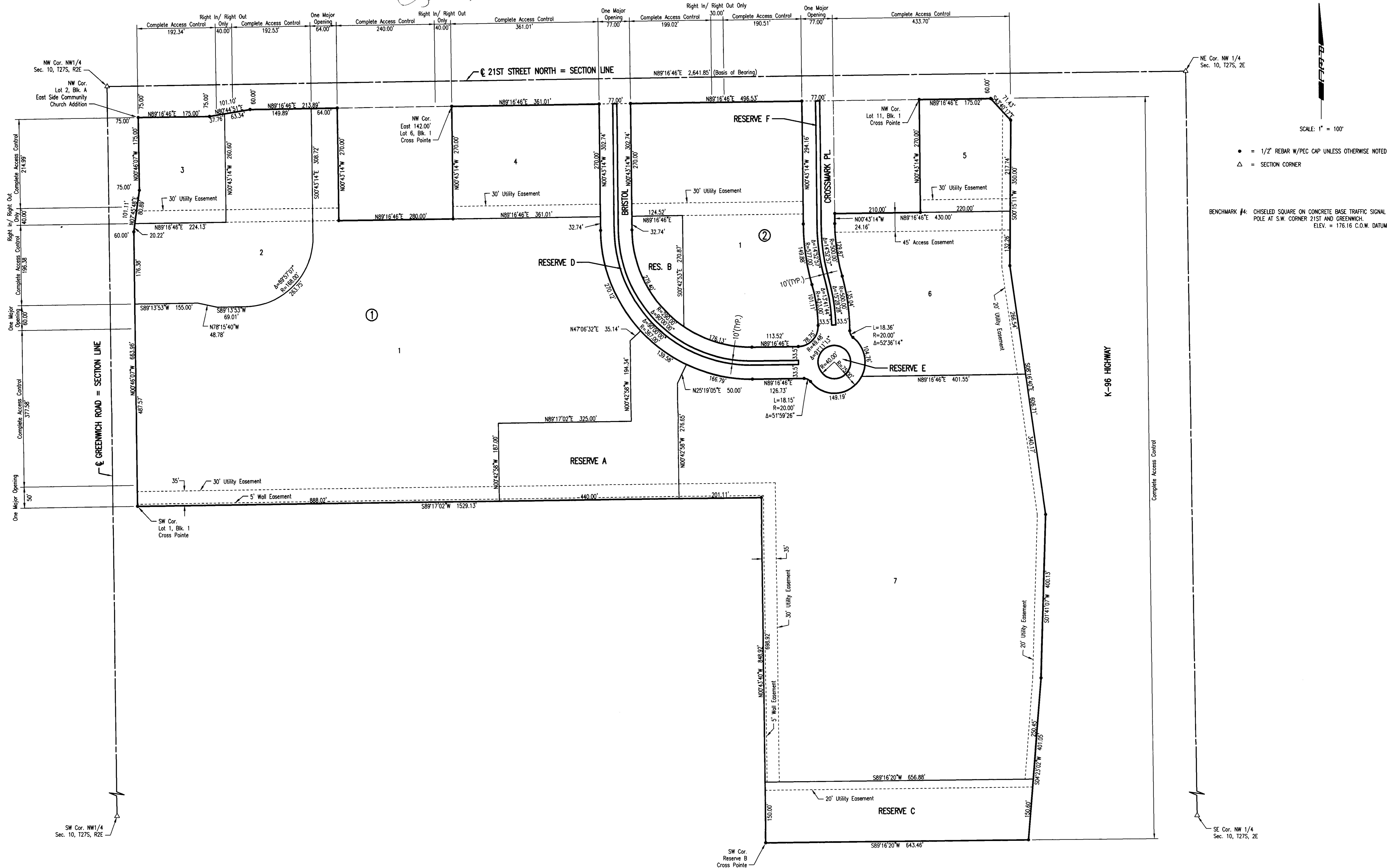
_____, DEPUTY
TONYA BUCKINGHAM

Revised
FINAL TRACING RECD

CROSS POINTE 2ND

AN ADDITION TO WICHITA, SEDGWICK COUNTY, KANSAS

12-06-07
3007-97



SCALE: 1" = 100'
● = 1/2" REBAR W/PEC CAP UNLESS OTHERWISE NOTED
△ = SECTION CORNER
BENCHMARK #4: CHISELED SQUARE ON CONCRETE BASE TRAFFIC SIGNAL POLE AT S.W. CORNER 21ST AND GREENWICH. ELEV. = 176.16 C.O.W. DATUM