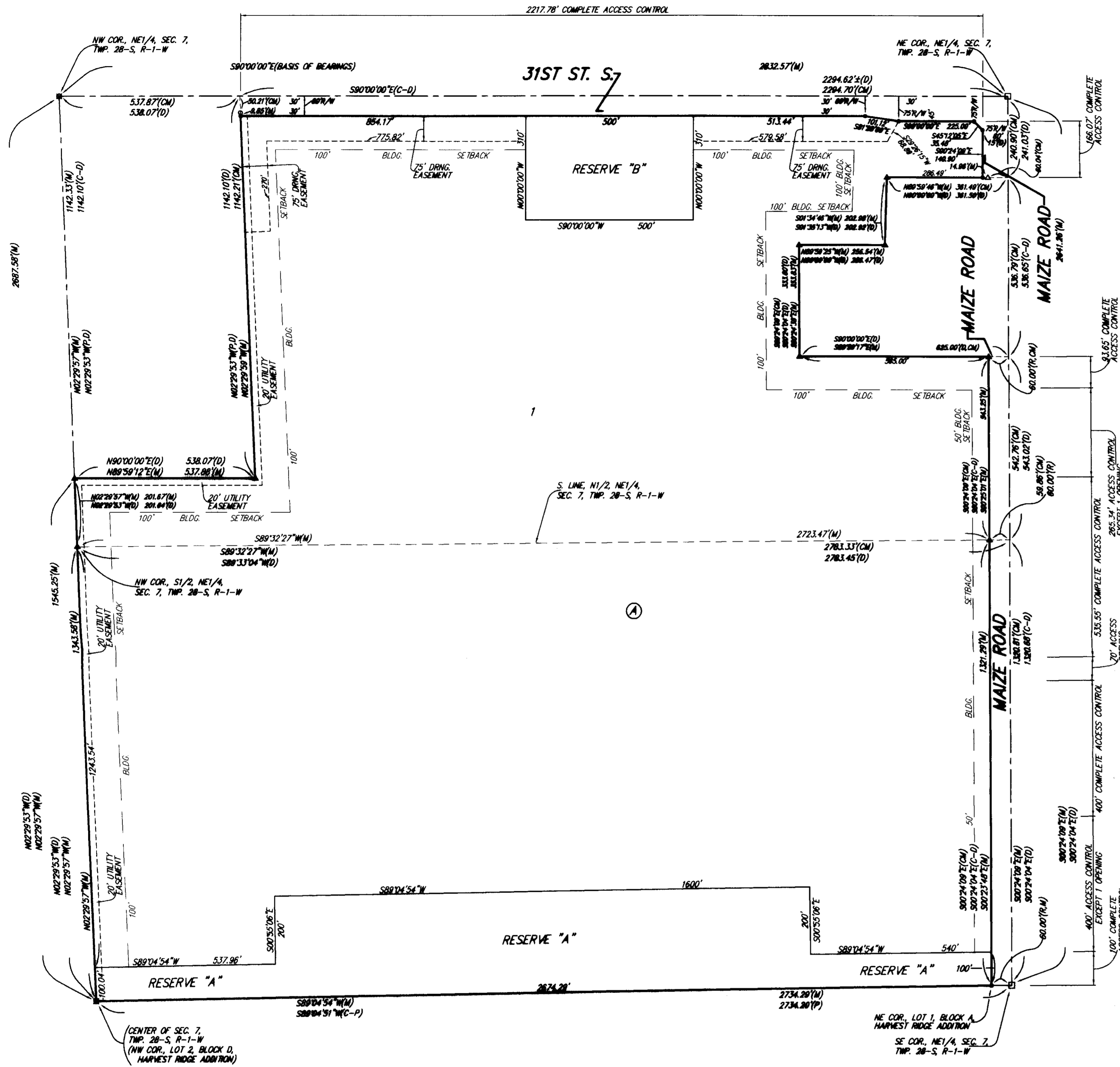


# SKYWAY WEST ADDITION WICHITA, SEDGWICK COUNTY, KANSAS

FILE COPY FINAL TRACING RECORD

12-12-07  
SUB 2005-18



State of Kansas) SS We, Baughman Company, P.A., Surveyors in Sedgwick County) do hereby certify that we have surveyed and platted "SKYWAY WEST ADDITION", Wichita, Sedgwick County, Kansas and that the accompanying plat is a true and correct exhibit of the property surveyed, described as the S1/2 of the NE1/4 of Sec. 7, Twp. 28-S, R-1-W of the 6th P.M., Sedgwick County, Kansas, TOGETHER with that part of the N1/2 of said NE1/4 described as beginning at the NE corner thereof; thence N90°00'00"W along the north line of said N1/2, 2294.62 feet to a point 538.07 feet east of the NW corner of said N1/2; thence S02°29'53"E parallel with the west line of said N1/2, 1142.10 feet; thence S90°00'00"W parallel with the north line of said N1/2, 538.07 feet to the west line of said N1/2; thence S02°29'53"E along said west line, 201.64 feet to the SW corner of said N1/2; thence N89°33'04"E along the south line of said N1/2, 2783.45 feet to the SE corner of said N1/2; thence N00°24'04"W along the east line of said N1/2, 543.02 feet; thence N90°00'00"W parallel with the north line of said N1/2, 625 feet; thence N00°24'04"W parallel with the east line of said N1/2, 333.80 feet; thence N90°00'00"E parallel with the north line of said N1/2, 256.47 feet; thence N01°35'13"E, 202.92 feet; thence N90°00'00"E parallel with said north line, 361.50 feet to the east line of said N1/2; thence N00°24'04"W along said east line, 241.03 feet to the point of beginning, all being subject to road rights-of-way of record.

Existing public easements and dedications being vacated by virtue of K.S.A. 12-512(b).

Baughman Company, P.A.

Michael G. Conrey  
Michael G. Conrey  
LS-019-17-2007 Surveyor

This plat of "SKYWAY WEST ADDITION", Wichita, Sedgwick County, Kansas has been submitted to and approved by the Wichita-Sedgwick County Metropolitan Area Planning Commission, Wichita, Kansas.  
Dated this \_\_\_\_\_ day of \_\_\_\_\_, 2007.  
Wichita-Sedgwick County Metropolitan Area Planning Commission

Darrell A. Downing, Chair

John L. Schlegel, Secretary

This plat approved and all dedications shown hereon accepted by the City Council of the City of Wichita, Kansas, this \_\_\_\_\_ day of \_\_\_\_\_, 2007.

Carl Brewer, Mayor

Karen Sublett, City Clerk

Reviewed in accordance with K.S.A. 58-2005 on this \_\_\_\_\_ day of \_\_\_\_\_, 2007.

Tricia L. Robella, L.S. #1246  
Deputy County Surveyor  
Sedgwick County, Kansas

Entered on transfer record this \_\_\_\_\_ day of \_\_\_\_\_, 2007.

Don Brace, County Clerk

Know all men by these presents that we, the undersigned, have caused the land in the surveyors certificate to be platted into a Lot, a Block, Streets, and Reserves, to be known as "SKYWAY WEST ADDITION", Wichita, Sedgwick County, Kansas. The utility easements are hereby granted as indicated for the construction and maintenance of all public utilities. The drainage easements are hereby granted as indicated for drainage purposes. The streets are hereby dedicated to and for the use of the public. Reserve "A" is hereby reserved for landscaping, open space, berms, lakes, drainage purposes, and utilities as confined to easement. Reserve "B" is hereby reserved for landscaping, open space, berms, lakes, and drainage purposes. Reserves "A" and "B" shall be owned and maintained by the owners of Lot 1, Block A. Access controls shall be as depicted on the face of the plat and are hereby granted to the City of Wichita, Kansas. The permitted opening locations shall be as determined by the City Engineer of the City of Wichita, Kansas. The Minimum Building Pad Elevation for the lowest opening to the structures shall be as indicated on the face of the plat.  
John E. Dugan Family Partnership, LP

John E. Dugan, Manager  
John E. Dugan, Trustee of the John E. Dugan Revocable Trust #1

State of Kansas) SS This is to certify that this plat has been filed for record in the office of the Register of Deeds, this \_\_\_\_\_ day of \_\_\_\_\_, 2007 at \_\_\_\_\_ o'clock \_\_\_\_\_ M.; and is duly recorded.

Bill Meek, Register of Deeds

Tonya Buckingham, Deputy

State of Kansas) SS The foregoing instrument acknowledged before me, this \_\_\_\_\_ day of \_\_\_\_\_, 2007, by John E. Dugan, Trustee of the John E. Dugan Revocable Trust #1, as Manager of the John E. Dugan Family Partnership, LP, on behalf of the limited partnership.

Judith M. Terhune, Notary Public  
JUDITH M. TERHUNE

My App't. Exp. 11-7-09

BENCHMARK:  
MAIZE ROAD & 31ST STREET SOUTH -  
CITY OF WICHITA BENCHMARK DISK  
200'± WEST OF INTERSECTION, SOUTHWEST  
CORNER OF HUBBARD OF R.C.B.C.  
ELEV. = 1331.35 MGD029

- = #4 REBAR W/ "BAUGHMAN" CAP (SET)
- = #4 REBAR W/ "TILS" CAP (FOUND)
- = 1" IRON PIPE (FOUND)
- = #4 REBAR (FOUND)
- △ = #5 REBAR W/ "ARMSTRONG" CAP (FOUND)

LOT	BLOCK	ELEVATION
1	A	1338.5

- (M) = MEASURED
- (P) = PLATTED
- (D) = DESCRIBED
- (R) = RECORD MEASUREMENT
- (CM) = CALCULATED PER MEASURED INFO
- (C-D) = CALCULATED PER DESCRIBED INFO
- (C-P) = CALCULATED PER PLATTED INFO

NOTE:  
BLANKET RIGHT-OF-WAY EASEMENT GRANTED TO THE SEDGWICK COUNTY ELECTRIC COOPERATIVE ASSOCIATION, INC. OVER THE NE1/4 OF SEC. 7, TWP. 28-S, R-1-W IN MSC. BOOK 147, PAGE 34

BLANKET GRANT OF RIGHT-OF-WAY GRANTED TO THE STATE CORPORATION COMMISSION OF KANSAS OVER THE NE1/4 OF SEC. 7, TWP. 28-S, R-1-W IN FILM 2236, PAGE 110.

BLANKET SALT WATER DISPOSAL AGREEMENT, FILM 796, PAGE 1273, AND CORRECTED IN FILM 842, PAGE 958 OVER THAT PART OF THE NE1/4 OF SEC. 7, TWP. 28-S, R-1-W OCCUPIED BY THIS PLAT AND ADDITIONAL LANDS IN SAID NE1/4.

NOTE:  
A drainage plan has been developed for this subdivision and is on file with the City of Wichita, Kansas. Drainage intent shall remain as depicted or as modified with the approval of the City Engineer of the City of Wichita, Kansas. No obstructions which impede the flow of this drainage plan shall be allowed.