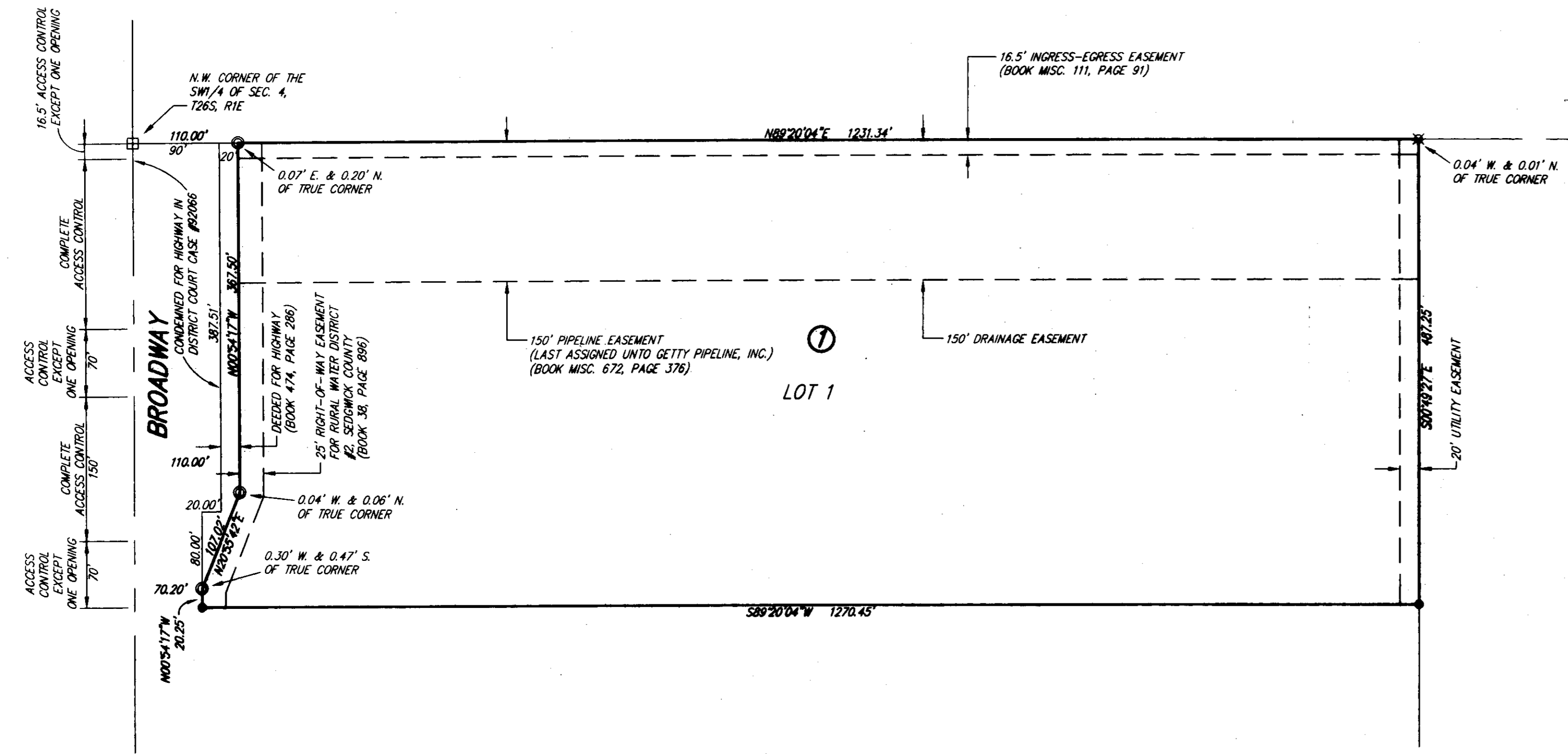


2-7-08
Sub 2007-113

HUSKERHAWK

an Addition to Sedgwick County, Kansas



State of Kansas)
Sedgwick County) SS

We, Ruggles & Bohm, P.A., Land Surveyors in aforesaid county and state, do hereby certify that, under the supervision of the undersigned, we have surveyed and platted "HUSKERHAWK", an Addition to Sedgwick County, Kansas, and that the accompanying plat is a true and correct exhibit of the property surveyed, described as follows:

The north 15 acres of the West Half of the Southwest Quarter of Section 4, T26S, R1E of the 6th P.M., Sedgwick County, Kansas, EXCEPT that part condemned for Highway in District Court Case #92066, and except that part deeded for Highway in Deed Book 474, Page 286.

All public easements and dedications are hereby vacated by virtue of K.S.A. 12-512(b).

Ruggles & Bohm, P.A.

Thomas C. Ruggles
Land Surveyor
1-8-08

This plat approved and all dedications shown hereon accepted by the City Council of the City of Wichita, Kansas, this ___ day of ___, 2008.

At the Direction of the City Council

Mayor
Carl Brewer

City Clerk
Karen Sublett

This plat of "HUSKERHAWK", an Addition to Sedgwick County, Kansas, has been submitted to and approved by the Wichita-Sedgwick County Metropolitan Area Planning Commission, Wichita, Kansas. Dated this ___ day of ___, 2008.

Wichita-Sedgwick County Metropolitan Area Planning Commission

Chair
M.S. Mitchell

Secretary
John L. Schlegel

This plat is approved and all dedications shown hereon, if any, accepted by the Board of County Commissioners of Sedgwick County, Kansas, this ___ day of ___, 2008.

Chairman
Thomas G. Winters

ATTEST:

County Clerk
Don Brace

Reviewed in accordance with K.S.A. 58-2005 on this ___ day of January, 2008.

Deputy County Surveyor
Sedgwick County Kansas
Robello, LS #1246

Entered on transfer record this ___ day of ___, 2008.

County Clerk
Don Brace

State of Kansas)
Sedgwick County) SS
This is to certify that this plat has been filed for record in the office of the Register of Deeds, this ___ day of ___, 2008, at ___ o'clock ___ M., and is duly recorded.

Register of Deeds
Bill Meek

Deputy
Tonya Buckingham

Huskerhawk Leasing, LLC
Rodney Gerlach
Managing Member

State of Kansas)
Sedgwick County) SS

The foregoing instrument acknowledged before me, this 4th day of January, 2008, by Rodney Gerlach, Managing Member, on behalf of Huskerhawk Leasing, LLC.

Jeffery
Notary Public
My appointment expires 10/21/10

We the undersigned, holders of a mortgage on a portion of the above described property, do hereby consent to this plat of "HUSKERHAWK", an Addition to Sedgwick County, Kansas.

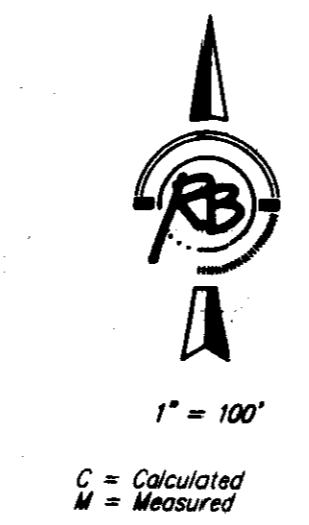
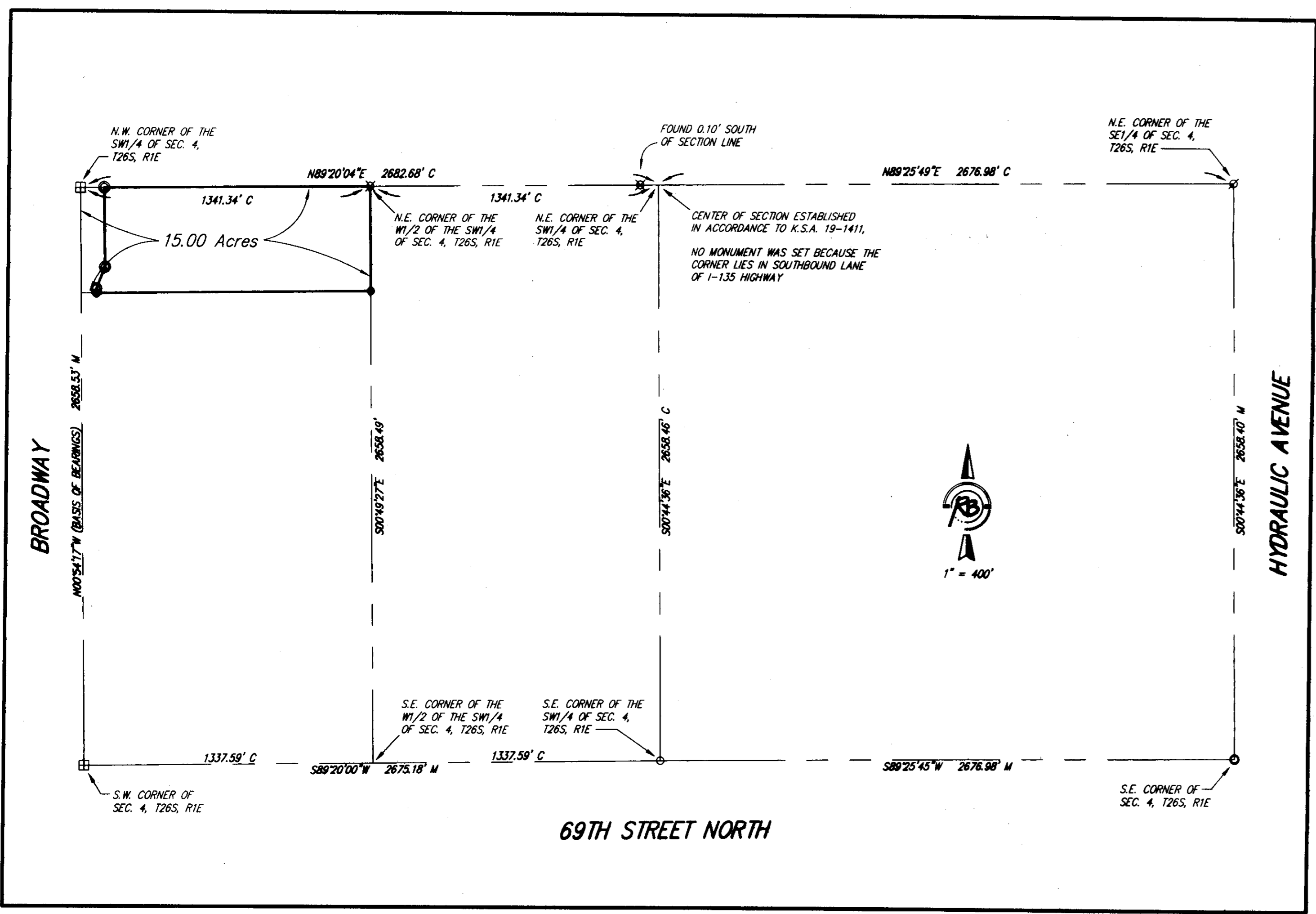
Randy Williams
Senior Vice President
Fidelity Bank

State of Kansas)
Sedgwick County) SS

The foregoing instrument acknowledged before me this 17th day of January, 2008, by Randy Williams, Senior Vice President of Fidelity Bank, on behalf of the Bank.

Marian J. Shortz
Notary Public
My appointment expires 1-17-09

Sherryll L. Leahy
Notary Public
My appointment expires December 16, 2011



- SURVEY MARKER LEGEND**
- ⊠ RAILROAD SPIKE WITH PUNCH HOLE (FOUND - ORIGIN UNKNOWN)
 - LEAD PLUG WITH PUNCH HOLE (FOUND - ORIGIN UNKNOWN)
 - ⊗ 5/8" REBAR (FOUND - ORIGIN UNKNOWN)
 - ⊗ 5/8" REBAR WITH MREK CAP (FOUND)
 - ⊗ 1/2" REBAR WITH GARBER CAP (FOUND)
 - PK NAIL IN 3/4" IRON PIPE (FOUND - ORIGIN UNKNOWN)
 - 5/8" REBAR W/RUGGLES & BOHM CAP (SET)

BENCH MARK: USGS STANDARD TABLE, 29' N. AND 64' W. OF THE SOUTHWEST CORNER OF SEC. 4, T26S, R1E ELEV = 1338.525 (NGVD29)

RIGHT-OF-WAY EASEMENT OVER SUBJECT PROPERTY FOR PIPELINES, TELEGRAPH AND TELEPHONE LINES, FILM 201, PAGE 66, LAST ASSIGNED TO TEXACO TRADING & TRANSPORTATION INC.

We the undersigned, holders of a mortgage on a portion of the above described property, do hereby consent to this plat of "HUSKERHAWK", an Addition to Sedgwick County, Kansas.

U.S. Small Business Administration
Wichita District Office
Linda McMaster
District Counsel
Linda McMaster

State of Kansas)
Sedgwick County) SS

The foregoing instrument acknowledged before me this 17th day of January, 2008, by Linda McMaster, District Counsel for the U.S. Small Business Administration, Wichita District Office.

Sherryll L. Leahy
Notary Public
My appointment expires December 16, 2011



Ruggles & Bohm, P.A.
Engineering, Surveying, Land Planning
924 North Main (316) 264-8008
Wichita, Kansas 67203 (316) 264-4621 fax
www.rbkansas.com E-mail: info@rbkansas.com

DWG FILE: SURVEY BASE PROJECT NO. 3143P JANUARY 8, 2008