

FINAL TRACING REC'D

3-10-08 SUB 2008-04

FINAL PLAT

FOLIAGE CENTER SECOND ADDITION

AN ADDITION TO WICHITA, SEDGWICK COUNTY, KANSAS

PLANNING COMMISSION CERTIFICATE

This plat of "FOLIAGE CENTER SECOND ADDITION" has been submitted to and approved by the Wichita-Sedgwick County Metropolitan Area Planning Commission, Wichita, Kansas.

Dated this ____ day of _____, 2008

WICHITA-SEDGWICK COUNTY METROPOLITAN AREA PLANNING COMMISSION

_____, Chair
M.S. Mitchell, Chair

Attest: _____, Secretary
John L. Schlegel, Secretary

Affix MAPC Seal

GOVERNING BODY CERTIFICATE

The dedications shown on this plat are hereby accepted and this plat is hereby approved by the governing body of the City of Wichita, Kansas.

Dated this ____ day of _____, 2008

At the direction of the City Council.

_____, Mayor
Carl Brewer, Mayor

Attest: _____, City Clerk
Karen Sublett, City Clerk

Affix City Seal

TRANSFER RECORD

STATE OF KANSAS, SEDGWICK COUNTY) ss:

Entered on transfer record this ____ day of _____, 2008

_____, County Clerk
Don Brace, County Clerk

Affix County Clerk Seal

REGISTER OF DEEDS CERTIFICATE

This is to certify that this instrument was filed for record in the Register of Deeds office this ____ day of _____, 2008, at ____ o'clock ____ M., and is duly recorded.

_____, Register of Deeds
Bill Meek, Register of Deeds

Attest: _____, Deputy
Tonya E. Buckingham, Deputy

Affix Seal

COUNTY SURVEYOR

Reviewed in accordance with K.S.A. 58-2005 on this ____ day of _____, 2008.

_____, Deputy County Surveyor
Tricia L. Robello, LS #1246
Deputy County Surveyor
Sedgwick County, Kansas

CERTIFICATE OF SURVEY

I, Gregory J. Allison, a registered land surveyor in Kansas, do hereby certify that I have been in responsible charge of surveying and platting of "FOLIAGE CENTER SECOND ADDITION", an addition to Wichita, Sedgwick County, Kansas, into a Lot, a Block, and a Street the same being accurately set forth in the accompanying plat and described hereinafter:

COMMENCING at the southeast corner of said Southeast Quarter, thence along the east line of said Southeast Quarter on a Kansas coordinate system of 1983 south zone grid bearing of N00°53'35"W, 759.97 feet to the POINT OF BEGINNING, thence S89°06'25"W, 338.42 feet; thence N00°53'35"W, 87.92 feet; thence N89°04'47"E, 26.23 feet; thence N00°53'35"W, 144.45 feet; thence N89°05'03"E, 312.19 feet to said east line; thence along said east line, S00°53'35"E, 232.51 feet to the POINT OF BEGINNING.

All reserves, streets, easements, setbacks, and access controls, together with that portion of easement recorded on Film 476, Page 289, together with that portion of easement recorded on Film 843, Page 888, together with that portion of easement for right-of-way recorded on Film 1624, Page 1442, together with all other public dedications or rights-of-way within the above described property are hereby vacated and replatted by virtue of K.S.A. 12-512(b).

I hereby certify that the details of this plat are correct to the best of my knowledge and belief this ____ day of _____, 2008.

Gregory J. Allison, PE, LS #1257
MKEC Engineering Consultants, Inc.
411 North Webb Road
Wichita, Kansas 67206

OWNER'S CERTIFICATE

Know all men by these presents that we the undersigned property owners of the land above set forth in the Registered Land Surveyor's Certificate, have caused the same to be surveyed and platted into a Lot, and a Block, and a Street the same to be known as "FOLIAGE CENTER SECOND ADDITION," an addition to Wichita, Sedgwick County, Kansas.

Easements for the construction and maintenance of public utilities, as indicated hereon, are hereby granted to and for the use of the public. The wall easements are non-exclusive and are platted for the construction and maintenance of a private wall; utilities may cross under the private wall.

The streets are hereby dedicated to and for the use of the public.

All abutters rights of access to or from Webb Road over and across the east line of "FOLIAGE CENTER SECOND ADDITION," are hereby granted to the public, provided however, Lot 1 is allowed one full movement connection to Webb Road as indicated hereon. These access controls are hereby granted to the City of Wichita, Kansas.

A drainage plan has been developed for this plat and all drainage easements, right-of-way, or reserves shall remain at established grades or as modified with the approval of the applicable City or County Engineer, and unobstructed to allow for the conveyance of storm water.

BEECH LAKE INVESTMENT, LLC, a Kansas limited liability company

_____, manager
Johnny Stevens, manager
_____, manager
Stephen L. Clark, manager

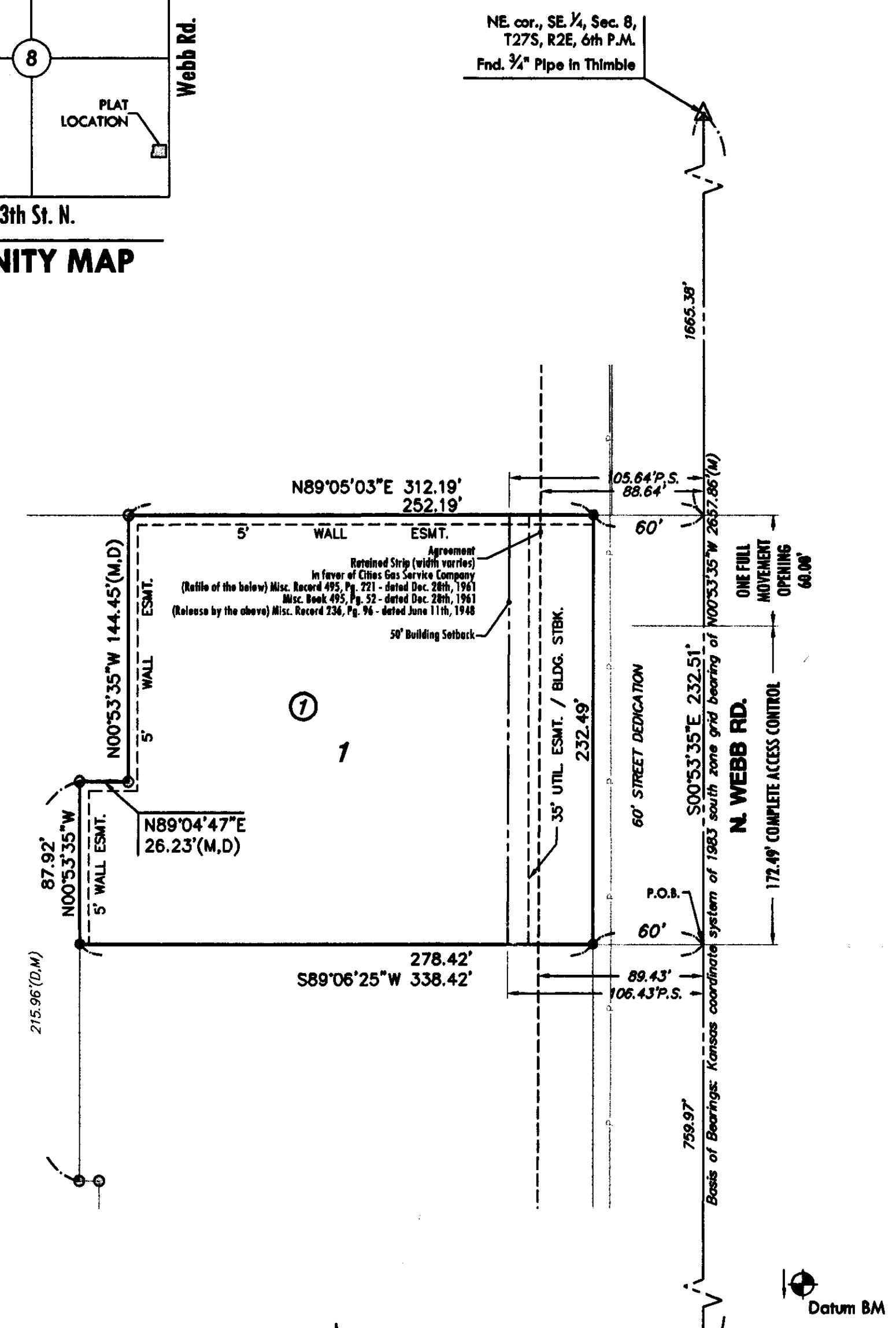
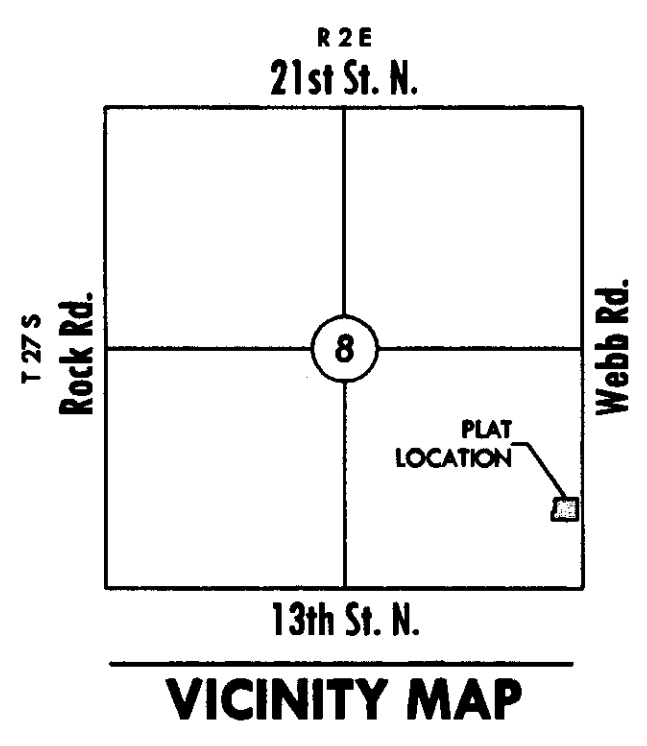
STATE OF KANSAS, SEDGWICK COUNTY) ss:

This instrument was acknowledged before me on ____ day of _____, 2008, by Johnny Stevens, and Stephen L. Clark, managers, Beech Lake Investment, LLC, a Kansas limited liability company.

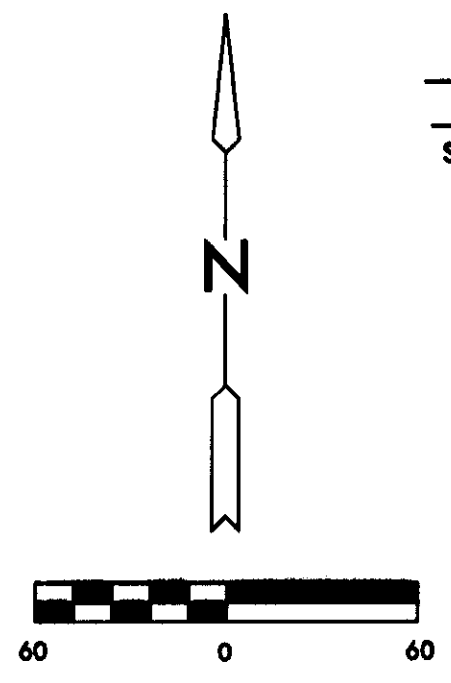
IN WITNESS WHEREOF, I have hereunto set my hand and affixed my official seal, the day and year last above written.

_____, Notary Public
Notary Public

My Term Expires: _____



- △ = Section Corner Monument Found
- = Found Survey Monument 3/8" rebar w/ MKEC CLS 39 id. cap
- = Set 3/8" rebar w/ MKEC CLS 39 id. cap
- (M) = Measured
- (D) = Described or record description
- P.S. = Pipeline setback



Basis of Bearings: Kansas coordinate system of 1983 south zone grid bearing of N00°53'35"W along the E. line of SE 1/4, Sec. 8, T27S, R2E, 6th P.M.

BENCH MARK
Datum BM
Square cut on SW corner of signal light pole base at NE corner of Webb Rd. and 13th St.
Elev.=1373.345 (NGVD 29)