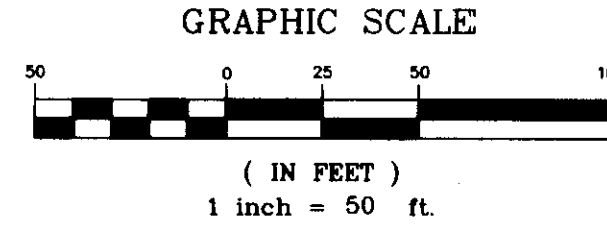
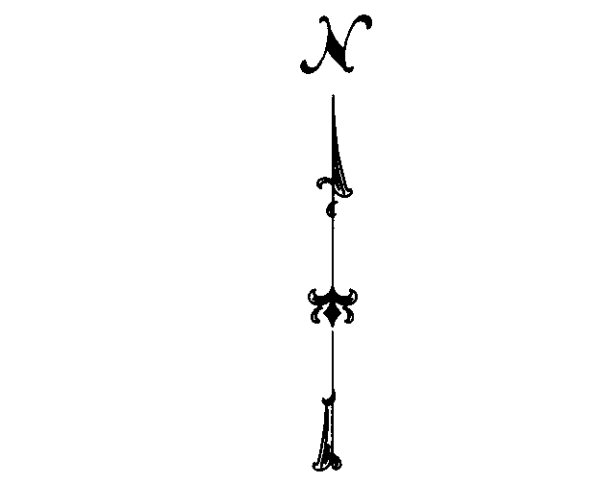
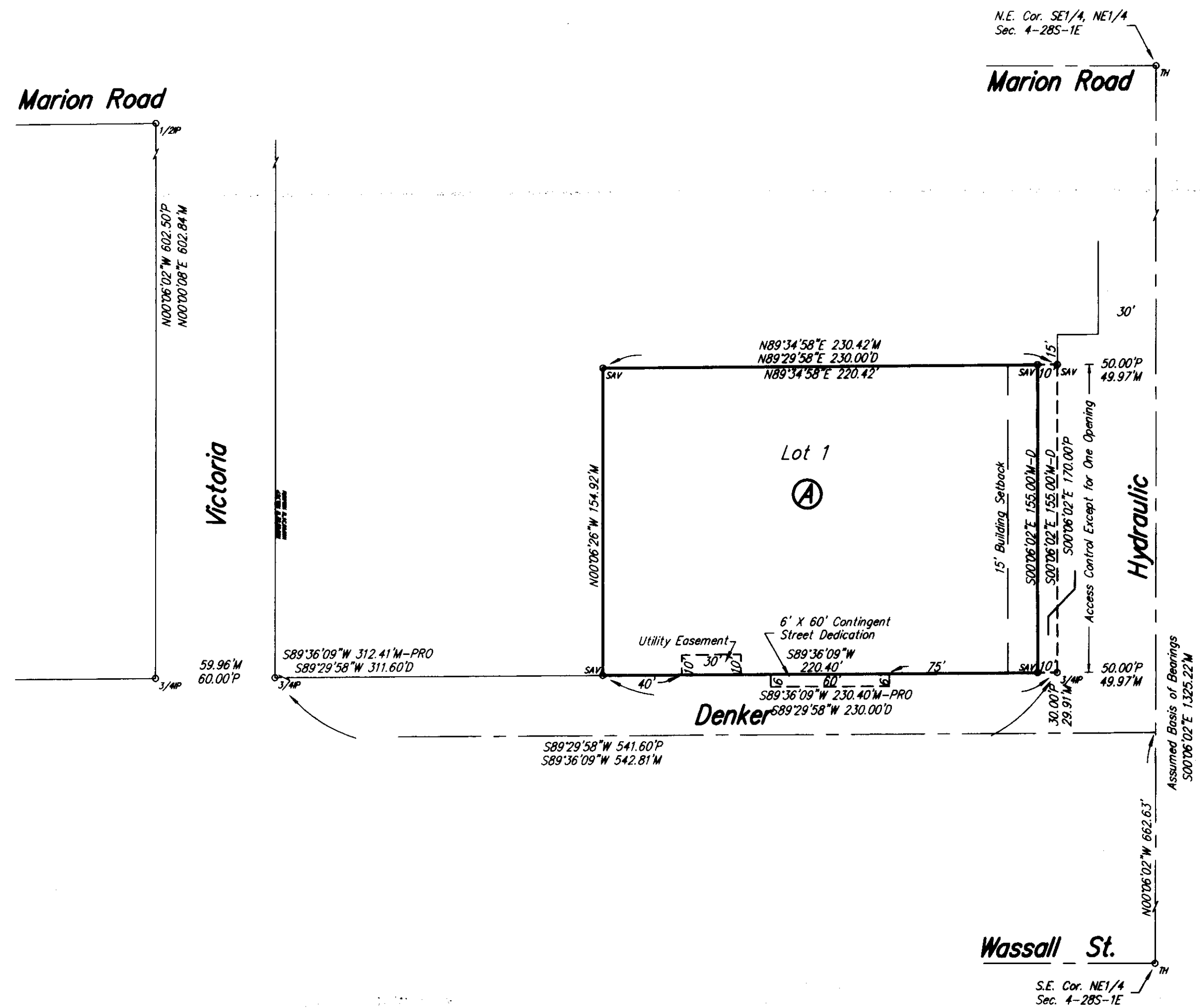


3-18-08
2008-09

FIRE STATION 22 ADDITION WICHITA, SEDGWICK COUNTY, KANSAS



- LEGEND:
Survey Datum = NAVD 88
- P = Plotted
 - M = Measured
 - C = Calculated
 - D = Described
 - Pro = Prorated
- * 3/4" IP 3/4" IRON PIPE (FOUND)
 - * 1/2" IP 1/2" IRON PIPE (FOUND)
 - * SKV 1/2" REBAR W/SAVOY CAP (SET)
 - * TH CITY OF WICHITA CONTROL (FOUND)

Site Bench Mark: Square Cut "□" Top of curb 6.3' W. & 14.3' S. of the S.E. corner Lot 1, Este Cate Second Addition
Elevation = 1281.00 NAVD88

State of Kansas) SS
Sedgwick County)

We, Savoy Company, P.A., Surveyors in aforesaid county and state do hereby certify that, under the supervision of the undersigned, we have surveyed and platted "FIRE STATION 22 ADDITION", Wichita, Sedgwick County, Kansas and that the accompanying plat is a true and correct exhibit of the property surveyed, described as and being a replat of:

Lot 1, and the East 50.00 feet of Lot 2, Este Cate Second Addition Wichita, Sedgwick County, Kansas, except the North 15.00 feet thereof.

All Public easements and dedications being vacated by virtue of K.S.A. 12-512(b).

Savoy Company, P.A.

Date 12/18/08
Mark A. Savoy RLS #788
Surveyor

Know all men by these presents that We, the undersigned, have caused the land described in the surveyors certificate to be platted into a Lot and Block to be known as "FIRE STATION 22 ADDITION", Wichita, Sedgwick County, Kansas. The drainage and utility easements are hereby granted as indicated for the construction and maintenance of all public utilities, and for drainage purposes. A drainage plan has been developed for this plat and all drainage easements, rights-of-way, or reserves shall remain at established grades, or as modified with the approval of the City Engineer, and unobstructed to allow for the conveyance of stormwater. Access Controls are hereby granted to the appropriate governing body (as indicated on the face of the plat). The contingent street dedication is contingent upon the removal of the existing structure.

City of Wichita

Carl Brewer Mayor

Attest: Karen Sublett City Clerk

State of Kansas) SS
Sedgwick County)

The foregoing instrument acknowledged before me, this _____ day of _____ 2008, by Carl Brewer, Mayor and Karen Sublett, City Clerk of the City of Wichita, Kansas on behalf of the City of Wichita.

My App't. Exp. _____

Notary Public

This plat of "FIRE STATION 22 ADDITION", Wichita, Sedgwick County, Kansas, has been submitted to and approved by the Wichita-Sedgwick County Metropolitan Area Planning Commission, Wichita, Kansas.
Dated this _____ day of _____, 2008.

Wichita-Sedgwick County Metropolitan Area Planning Commission

Chairman
M. S. Mitchell

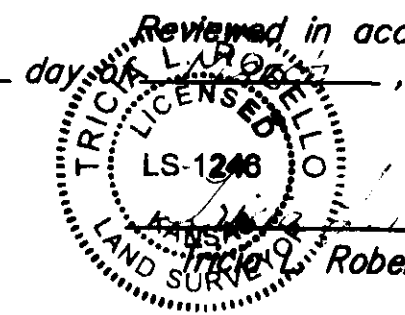
Secretary
John L. Schiegel

This plat approved and all dedications shown hereon, accepted by the City Council of the City of Wichita, Kansas, this _____ day of _____, 2008.

Mayor
Carl Brewer

City Clerk
Karen Sublett

Reviewed in accordance with K.S.A. 58-2005 on this 17th day of December, 2008.



Deputy County Surveyor
Sedgwick County Kansas
Robello, LS #1246

Entered on transfer record this _____ day of _____, 2008.

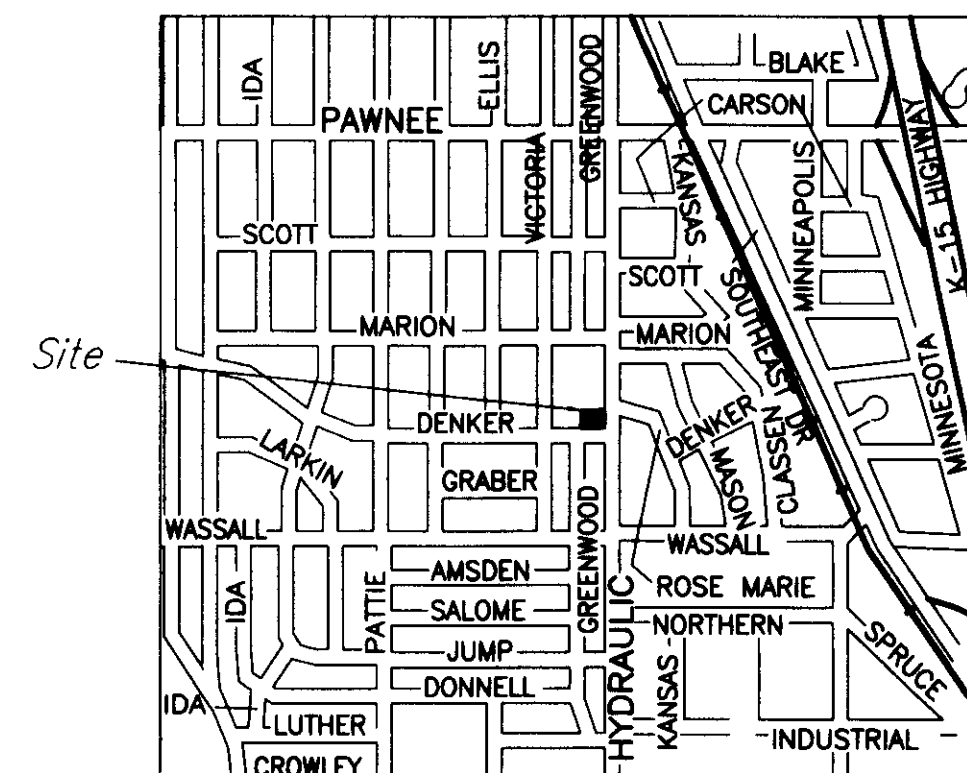
County Clerk
Don Brace

State of Kansas) SS
Sedgwick County)

This is to certify that this plat has been filed for record in the office of the Register of Deeds, this _____ day of _____, 2008, at o'clock _____ M. and is duly recorded.

Register of Deeds
Bill Meek

Deputy
Tonya Buckingham



Savoy Company, P.A.
Land Surveyors