

# Second CHAUTAUQUA ADDITION WICHITA, SEDGWICK COUNTY, KANSAS

FILE COPY  
FINAL TRACING RECD

1-31-08  
SUB 2007-96  
(5)

State of Kansas) SS  
Sedgwick County)

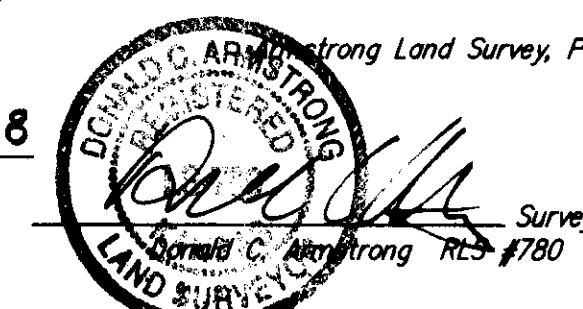
We, Armstrong Land Survey, P.A., Surveyors in aforesaid county and state do hereby certify that, under the supervision of the undersigned, we have surveyed and platted "CHAUTAUQUA ADDITION", Second Sedgwick County, Kansas and that the accompanying plat is a true and correct exhibit of the property surveyed, described as and being a replat of the following:

That part vacated 26th St. North lying between Block 4 and Block 1, in Agee-Hunter Addition, Wichita, Sedgwick County, Kansas, described as beginning at the S.W. corner of said Block 4; thence East along the South line of said Block 4, 245.28 feet; thence South 59.72 feet to a point 245.07 feet East of the N.W. corner of said Block 1; thence West along the North line of said Block 1, 245.07 feet to the N.W. of said Block 1; thence North 59.93 feet to the point of beginning.

All Public easements and dedications being vacated by virtue of K.S.A. 12-512(b).

Armstrong Land Survey, P.A.

Date 1-23-08



Know all men by these presents that we, the undersigned, have caused the land described in the surveyors certificate to be platted into a Lot and Block to be known as "CHAUTAUQUA- Second ADDITION", Wichita, Sedgwick County, Kansas. The utility easement is hereby granted for the construction and maintenance of all public utilities. A drainage plan has been developed for this plat and all drainage easements, rights-of-way, or reserves shall remain at established grades, or as modified with the approval of the City Engineer, and unobstructed to allow for the conveyance of stormwater. Access Control is hereby granted as indicated on the face of the plat.

Mennonite Housing Rehabilitation Services, Inc.

Andrew L. Bias, President

State of Kansas) SS  
Sedgwick County)

The foregoing instrument acknowledged before me, this day of January 2008, by Andrew L. Bias, President of Mennonite Housing Rehabilitation Services, Inc. on behalf of the corporation

Roy G. Richards, Notary Public

My App'l. Exp. 12-1-09

This plat of "CHAUTAUQUA ADDITION", Wichita, Sedgwick County, Kansas, has been submitted to and approved by the Wichita-Sedgwick County Metropolitan Area Planning Commission, Wichita, Kansas.

Dated this \_\_\_\_\_ day of \_\_\_\_\_, 2008.

Wichita-Sedgwick County Metropolitan Area Planning Commission

M. S. Mitchell, Chairman

John L. Schiegel, Secretary

This plat approved and all dedications shown hereon, accepted by the City Council of the City of Wichita, Kansas, this \_\_\_\_\_ day of \_\_\_\_\_, 2008.

Carl Brewer, Mayor

Karen Sublett, City Clerk

Approved in accordance with K.S.A. 58-2005 on this \_\_\_\_\_ day of \_\_\_\_\_, 2008.

Deputy County Surveyor  
L. Robello, LS #1246

Entered on transfer record this \_\_\_\_\_ day of \_\_\_\_\_, 2008.

Don Brace, County Clerk

State of Kansas) SS  
Sedgwick County)

This is to certify that this plat has been filed for record in the office of the Register of Deeds, this \_\_\_\_\_ day of \_\_\_\_\_, 2008, at o'clock \_\_\_\_\_ M. and is duly recorded.

Bill Meek, Register of Deeds

Tonya Buckingham, Deputy

Second

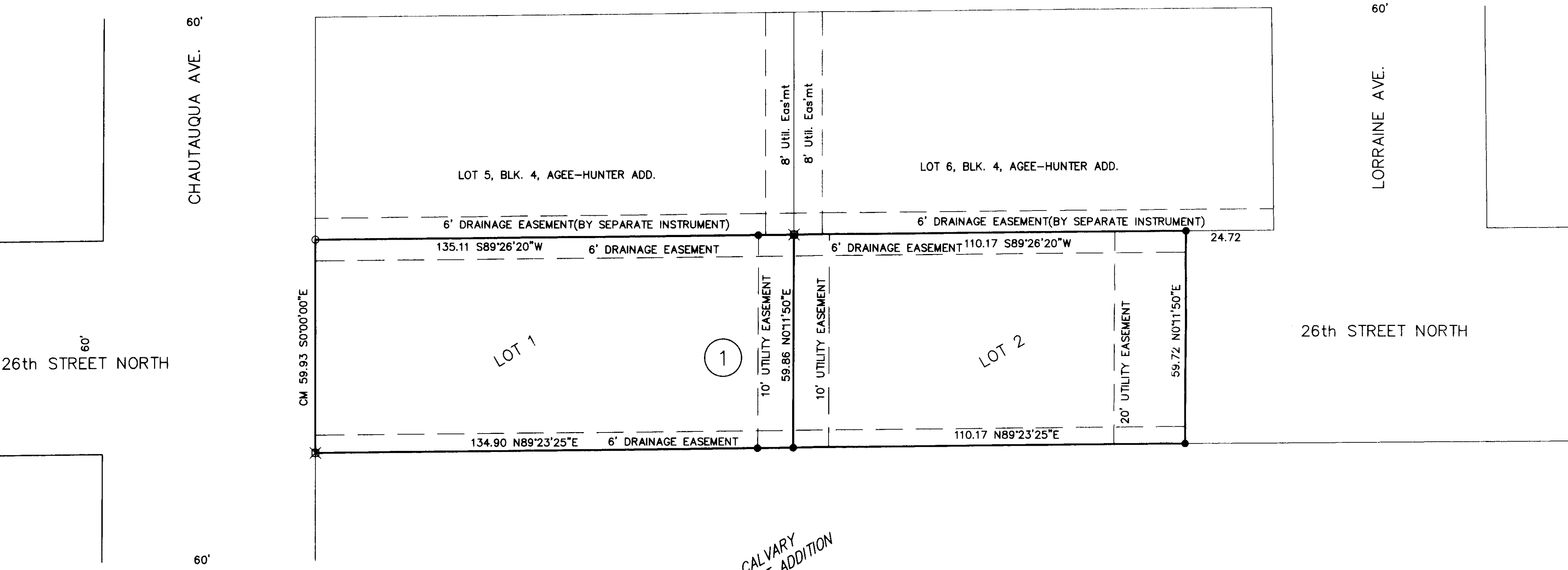
MENNONITE HOUSING REHABILITATION SERVICES, INC.  
CHAUTAUQUA ADDITION  
WICHITA, KANSAS

CED PROJ. NO.: 20071575

**CERTIFIED ENGINEERING DESIGN, P.A.**

810 WEST DOUGLAS, SUITE C  
WICHITA, KANSAS 67203  
PH.(316)262-8808 FAX.(316)262-1669

DESIGNED: HDF	SCALE: 1"=20'	SHEET
DRAWN: BKS	DATE: 8/07	1
CHECKED: HDF	CED FILE: 32406.DWG	TOTAL 1



26th STREET NORTH

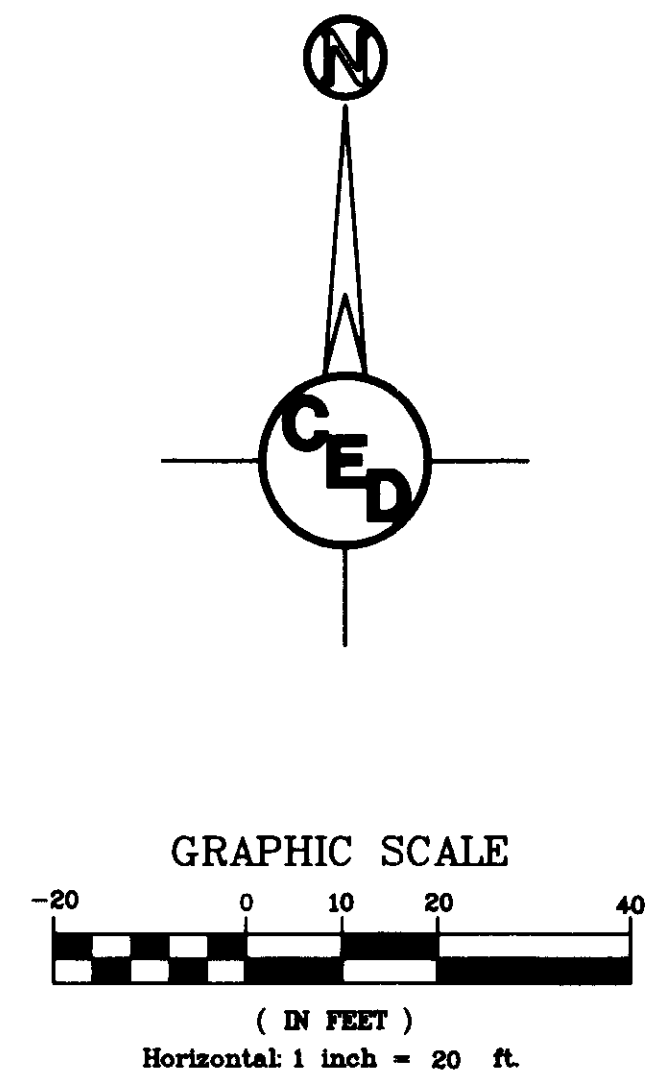
26th STREET NORTH

CALVARY BAPTIST ADDITION

AGEE-HUNTER ADDITION

### LEGEND

- - Set 5/8" rebar & "Armstrong" cap
- - Found 1" iron pin
- ⊠ - Found chiseled in concrete
- M - Measured distance
- P - Plat distance
- CM - Calculated from measured distance
- — — — — Property line
- — — — — Right of Way line
- - - - - Easement line



FOUNDATION ELEVATIONS (NGVD DATUM)		
TOP OF FOUNDATION = TOP OF ROLL CURB + 2'-8"(MIN)		
LOT	BLOCK	MIN. TOP OF STANDARD BASEMENT FOUNDATION
1	1	1354.0
2	1	1356.0

