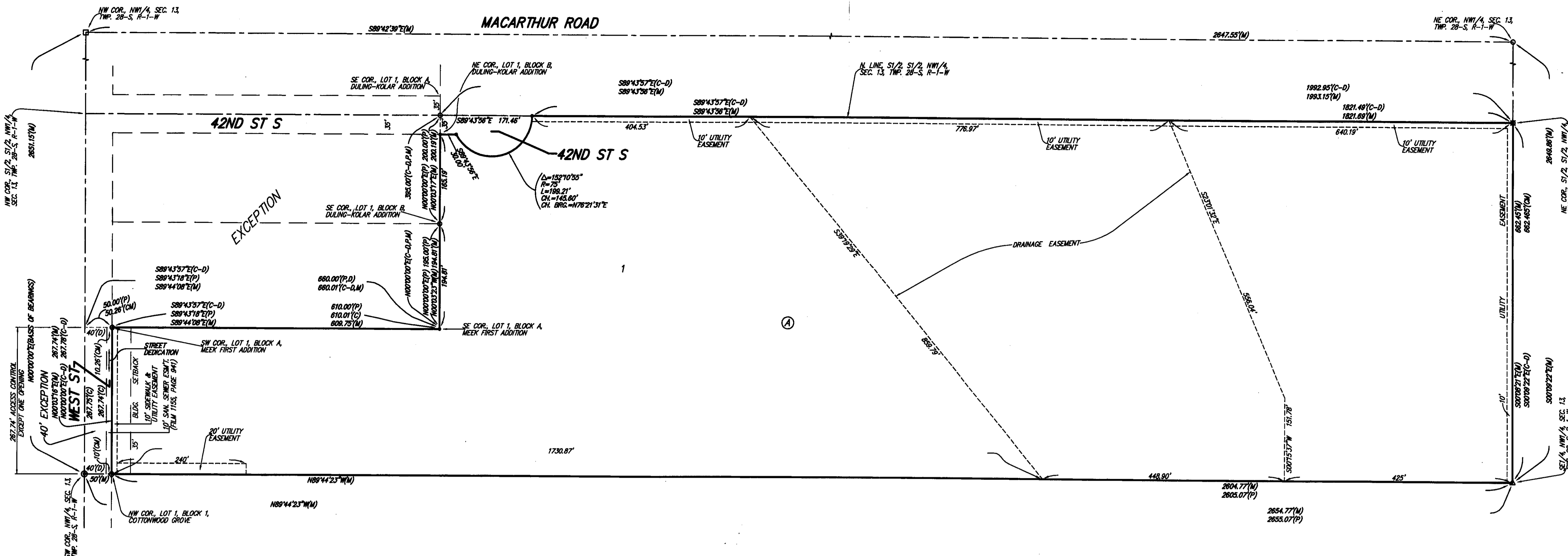


FINAL TRACING REC'D

4-15-08
S.O.B. 8007-116

LANGE ADDITION

WICHITA, SEDGWICK COUNTY, KANSAS



State of Kansas) SS We, Baughman Company, P.A., Surveyors in
Sedgwick County) Sedgwick County, Kansas do hereby certify that we have surveyed and
platted "LANGE ADDITION", Wichita, Sedgwick County, Kansas and that the
accompanying plat is a true and correct exhibit of the property surveyed,
described as the S1/2 of the S1/2 of the NW1/4 of Sec. 13, Twp. 28-S,
R-1-W of the 6th P.M., Sedgwick County, Kansas, EXCEPT the north
395.00 feet of the west 660.00 feet thereof, and EXCEPT the west 40
feet for road.
Existing public easements and dedications
being vacated by virtue of K.S.A. 12-512(b).
Baughman Company, P.A.

Michael G. Conrey
Michael G. Conrey
3-17-2008, Surveyor

We, the undersigned, holders of a mortgage on the
above described property, do hereby consent to this plat of "LANGE
ADDITION", Wichita, Sedgwick County, Kansas.
Kanza Bank

Max Whittle, SUP, SUP
(Min)

State of Kansas) SS The foregoing instrument acknowledged be-
fore me, this 19 day of April, 2008, by Max Whittle,
SUP of Kanza Bank, on behalf of the bank.

Ashley Clinesmith, Notary Public
My App't. Exp. October 1, 2011

State of Kansas) SS The foregoing instrument acknowledged before
me, this 14 day of April, 2008, by Jeff M. Lange, President of
JBL, Inc., a Kansas corporation, on behalf of the corporation.

Judith M. Terhune, Notary Public
My App't. Exp. 11-1-09

Know all men by these presents that we,
the undersigned, have caused the land in the surveyors certificate to be
platted into a Lot, a Block, and Streets, to be known as "LANGE
ADDITION", Wichita, Sedgwick County, Kansas. The utility easements are
hereby granted as indicated for the construction and maintenance of all
public utilities. The sidewalk and utility easement is hereby granted as
indicated for the construction and maintenance of a public sidewalk and
for the construction and maintenance of all public utilities. The drainage
easement is hereby granted as indicated for drainage purposes. The
streets are hereby dedicated to and for the use of the public. Access
controls shall be as depicted on the face of the plat and are hereby
granted to the City of Wichita, Kansas. The permitted opening location
shall be as determined by the City Engineer of the City of Wichita, Kansas.
The Minimum Building Pad Elevations for the lowest opening to the
structures shall be as indicated on the face of the plat.

JBL, Inc., a Kansas corporation
Jeff M. Lange, President

This plat of "LANGE ADDITION", Wichita,
Sedgwick County, Kansas has been submitted to and approved by the
Wichita-Sedgwick County Metropolitan Area Planning Commission, Wichita,
Kansas.

Dated this day of , 2008.
Wichita-Sedgwick County Metropolitan Area Planning Commission

M. S. Mitchell, Chair

John L. Schlegel, Secretary

Carl Brewer, Mayor

Karen Sublett, City Clerk

Reviewed in accordance with K.S.A. 58-2005
on this day of , 2008.

Tricia L. Robello, L.S. #1246
Deputy County Surveyor
Sedgwick County, Kansas

Entered on transfer record this day
of , 2008.

Don Brace, County Clerk

State of Kansas) SS This is to certify that this plat has been
filed for record in the office of the Register of Deeds, this day
of , 2008 at o'clock M., and is duly recorded.

Bill Meek, Register of Deeds

Tonya Buckingham, Deputy

NOTE:
A DRAINAGE PLAN HAS BEEN DEVELOPED FOR THIS SUBDIVISION AND IS
ON FILE WITH THE CITY OF WICHITA, KANSAS. DRAINAGE INTENT SHALL
REMAIN AS DEPICTED OR AS MODIFIED WITH THE APPROVAL OF THE CITY
ENGINEER OF THE CITY OF WICHITA, KANSAS. NO OBSTRUCTIONS WHICH
IMPEDE THE FLOW OF THIS DRAINAGE PLAN SHALL BE ALLOWED.

Baughman Company, P.A.
315 Ellis St. Wichita, KS 67211 P 316-262-7271 F 316-262-0149
ENGINEERING | SURVEYING | PLANNING | LANDSCAPE ARCHITECTURE