

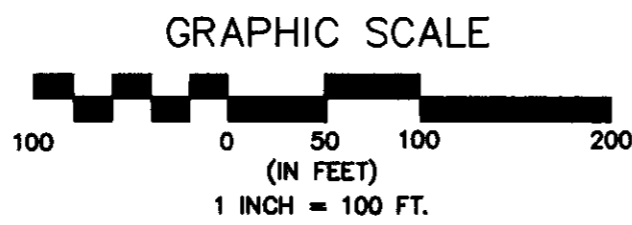
TERRADYNE WEST 2nd ADDITION

to Wichita, Sedgwick County, Kansas

CURVE TABLE				
Curve	Length	Radius	Chord	Delta
C2	43.41	54.50	42.27	45°38'20"
C3	58.07	75.00	56.63	44°21'40"
C4	25.62	20.00	23.90	73°23'54"
C5	64.05	50.00	59.76	73°23'54"
C6	157.08	50.00	100.00	180°00'00"
C7	15.71	10.00	14.14	90°00'13"
C9	40.23	50.50	39.17	45°38'20"

LINE TABLE		
Line	Length	Bearing
L1	123.99	N90°00'00"E
L2	38.23	S00°00'00"W
L3	25.00	N89°59'47"W
L4	145.84	S45°38'20"E
L5	234.06	N00°00'13"E
L6	25.00	N90°00'00"E

Minimum Building Elevations	
Low Opening	
Description	Elevation
Lot 1, Block 1	1322.6
Lots 2 through 6, Block 1	1322.0
Lot 7, Block 1	1321.5
Lots 8 and 9, Block 1	1321.0



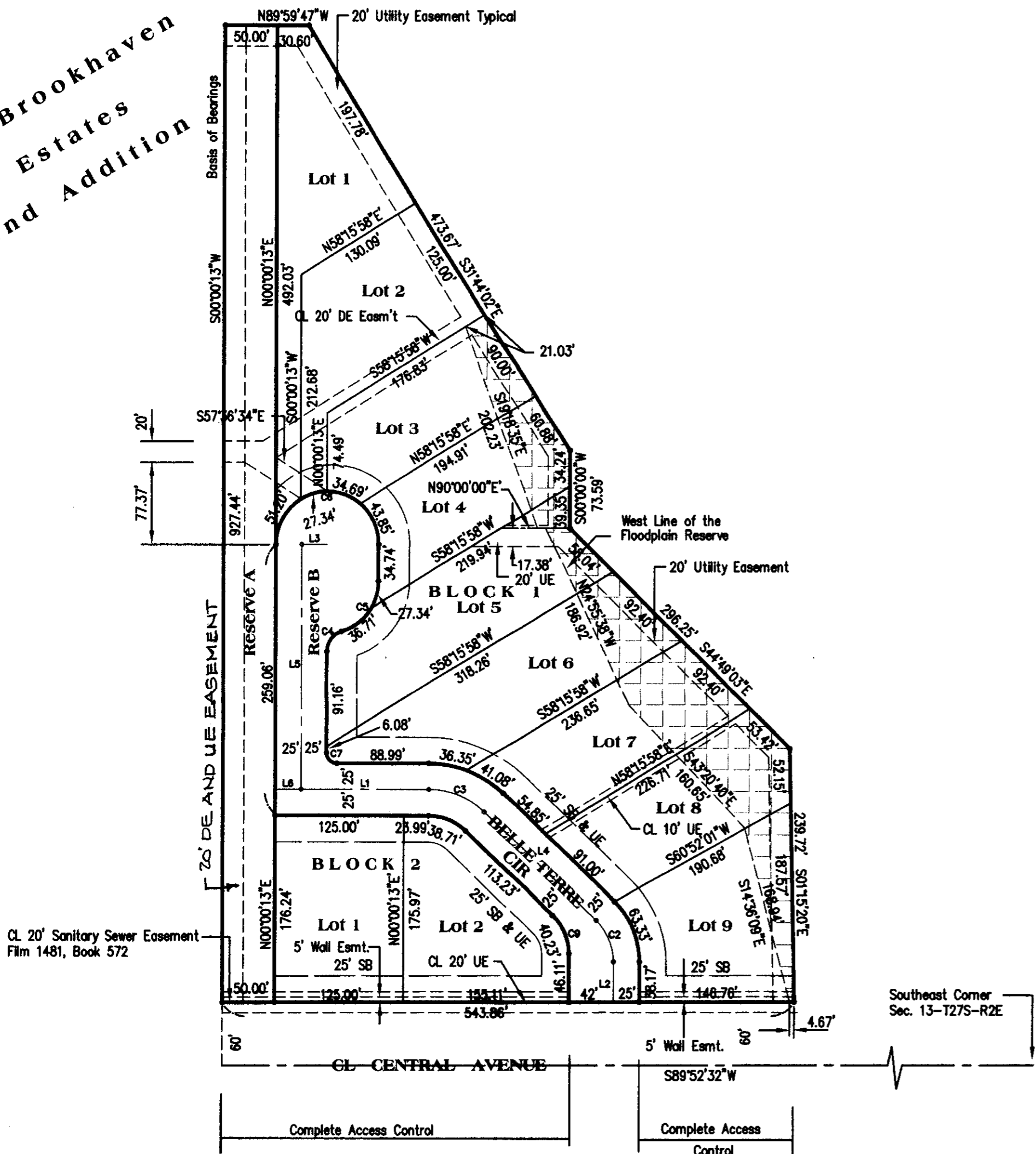
Legend:

- Building Setback SB
- Utility Easement UE
- Drainage Easement DE
- Centerline CL
- Curve Number C7
- Line Number L1
- Iron Bar *

Benchmarks:

- NGVD Datum - Date of survey: November 2004
- Square cut on top of curb at N.W. corner concrete parking lot at S.W. corner Terradyne 2nd Addition.
Elev. 1332.42
 - Square cut in center of south end of concrete walk at information building N. side terradyne at N.E. corner Terradyne 2nd Addition.
Elev. 1341.06

Brookhaven
Estates
2nd Addition



STATE OF KANSAS, COUNTY OF SEDGWICK: ss

I, Kenny E. Hill, being a duly licensed Land Surveyor in said County and State, do hereby certify that I have been in responsible charge of surveying and platting the "TERRADYNE WEST 2ND ADDITION" to Wichita, Sedgwick County, Kansas, being described as follows:

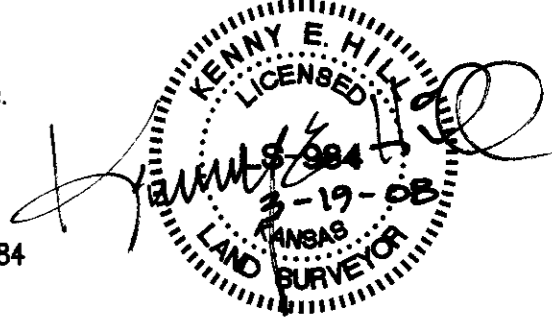
A re-plot of Lots 1 through 6, Block 3 and Lot 1, Block 4, Reserve B and C all in Terradyne West, an addition to Wichita, Sedgwick County, Kansas.

The accompanying plat is a true and correct exhibit of property surveyed.

Dated this 19TH day of MARCH, 2008.

Poe and Associates, Inc.

Kenny E. Hill, L.S. 984
Vice President



KNOW ALL MEN BY THESE PRESENTS:

That we, the undersigned, have caused the land described in the Surveyor's Certificate to be platted into Lots, Blocks, Streets and Reserves. The streets are hereby dedicated to and for the use of the public. Easements are hereby granted as indicated for the construction and maintenance of drainage, screening berm, trails, open space and utilities. A drainage plan has been developed for this addition. All drainage easements and rights-of-way shall remain at established grades or as modified with the approval of the applicable City or County Engineer, and remain unobstructed to allow for the conveyance of stormwater. The minimum low opening elevation for homes built on Lots 1 through 9, Block 1 is as shown on the Minimum Building Elevation Table. Reserve A is for a screening berm, landscaping and walking trail. Reserve B is for a private street, fire lane access, utilities, drainage, berms, landscaping, irrigation and entry monuments and utilities. Reserves A and B are to be owned and maintained by an owners association. All abutters' rights of access to or from Central Avenue over and across the South line of Reserve A, Lots 1 and 2, Block 2, and Lot 9, Block 1 as indicated on the plat map are hereby granted to the appropriate governing body.

Terradyne Residential, LLC

Craig Smith
Craig Smith, Managing Member

STATE OF KANSAS, COUNTY OF SEDGWICK: ss

This instrument was acknowledged before me on this, 26th day of March, 2008, by Craig Smith, Managing Member of Terradyne Residential, LLC.



Carol R. Barnes
Notary Public

My Appointment Expires: 4/25/2008

KNOW ALL MEN BY THESE PRESENTS:

That Fidelity Bank, fsb., holders of a mortgage on the property described in the surveyor's certificate do hereby consent to this plat of Terradyne West 2nd Addition.

Fidelity Bank, fsb.

Michael E. Smith
Michael E. Smith, Sr. Vice President

STATE OF KANSAS, COUNTY OF SEDGWICK: ss

This instrument was acknowledged before me on this, 25 day of April, 2008, by Michael E. Smith, Senior Vice President of Fidelity Bank, fsb.



Lori Richardson
Notary Public

My Appointment Expires: 11-2011

This plat of TERRADYNE WEST an ADDITION to Wichita, Sedgwick County, Kansas has been submitted to and approved by this WICHITA-SEDGWICK COUNTY METROPOLITAN AREA PLANNING COMMISSION, Wichita, Kansas.

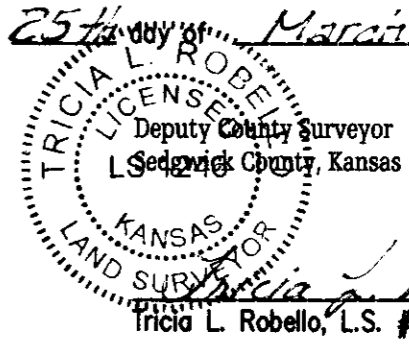
Dated this _____ day of _____, 2008.

Wichita, Sedgwick County
Metropolitan Area Planning Commission

Darrell A. Downing, Chair

John L. Schlegel, Secretary

Reviewed in accordance with K.S.A. 58-2005 on this 25th day of March, 2008.



Tricia L. Robello
Tricia L. Robello, L.S. #1246

This plat approved and all dedications shown hereon accepted by the City Council of the City of Wichita, Kansas, this _____ day of _____, 2008.

At the Direction of the City Council

Carl Brewer, Mayor

Karen Sublett, City Clerk

Entered on transfer record this, _____ day of _____, 2008.

Don Brace, County Clerk

This is to certify that this instrument was filed for record in the Register of Deeds Office at _____, A.M.-P.M. on the _____ day of _____, 2008.

Bill Meek, Register of Deeds

Tonya Buckingham, Deputy