

FINAL TRACING RECORD FLIGHT SAFETY ADDITION

Sedgwick County, Kansas

7-17-08
July 2008-05

State of Kansas) SS
Sedgwick County)

State of Kansas) SS
Sedgwick County)

We, Ruggles & Bohm, P.A., Land Surveyors in aforesaid county and state, do hereby certify that, under the supervision of the undersigned, we have surveyed and platted "FLIGHTSAFETY ADDITION", Sedgwick County, Kansas, and that the accompanying plat is a true and correct exhibit of the property surveyed, described as follows:

The foregoing instrument acknowledged before me this _____ day of _____, 2008, by _____, on behalf of Credit Suisse, as administrative agent, Mortgagee.

A tract of land located in the Southwest Quarter of Section 16, Township 27 South, Range 2 East of the Sixth Principal Meridian, Sedgwick County, Kansas, described as beginning at the Southwest corner of Lot 1, Block 6, Travel Air City, Sedgwick County, Kansas; thence northeast to a point on the East line of said Lot 1, 50.41 feet north of the Southeast corner of said Lot 1; thence south 345.41 feet; thence northwesterly to the East line of relocated Central Avenue; thence northeasterly along relocated Central Avenue to the point of beginning; and the west half of vacated Hoyt Avenue adjacent thereto.

My appointment expires _____, Notary Public

My appointment expires _____

This plat of "FLIGHTSAFETY ADDITION", Sedgwick County, Kansas, has been submitted to and approved by the Wichita-Sedgwick County Metropolitan Area Planning Commission, Wichita, Kansas. Dated this _____ day of _____, 2008.

Wichita-Sedgwick County Metropolitan Area Planning Commission

_____, Chair
M.S. Mitchell

_____, Secretary
John L. Schlegel

This plat approved and all dedications shown hereon accepted by the City Council of the City of Wichita, Kansas, this _____ day of _____, 2008.

At the Direction of the City Council

_____, Mayor
Carl Brewer

_____, City Clerk
Karen Sublett

All public easements and dedications are hereby vacated by virtue of K.S.A. 12-512(b).

Ruggles & Bohm, P.A.

_____, Land Surveyor
Thomas C. Ruggles

This plat is approved and all dedications shown hereon, if any, accepted by the Board of County Commissioners of Sedgwick County, Kansas, this _____ day of _____, 2008.

_____, Chairman
Thomas G. Winters

ATTEST:

_____, County Clerk
Don Brace

Reviewed in accordance with K.S.A. 58-2005 on this _____ day of _____, 2008.

_____, Deputy County Surveyor
Sedgwick County Kansas
Tricia L. Robello, LS #1246

Entered on transfer record this _____ day of _____, 2008.

_____, County Clerk
Don Brace

State of Kansas) SS
Sedgwick County)

This is to certify that this plat has been filed for record in the office of the Register of Deeds, this _____ day of _____, 2008, at _____ o'clock _____ M, and is duly recorded.

_____, Register of Deeds
Bill Meek

_____, Deputy
Tonya Buckingham

State of Kansas) SS
Sedgwick County)

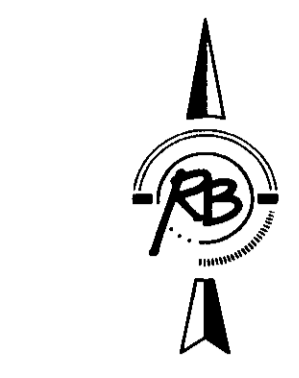
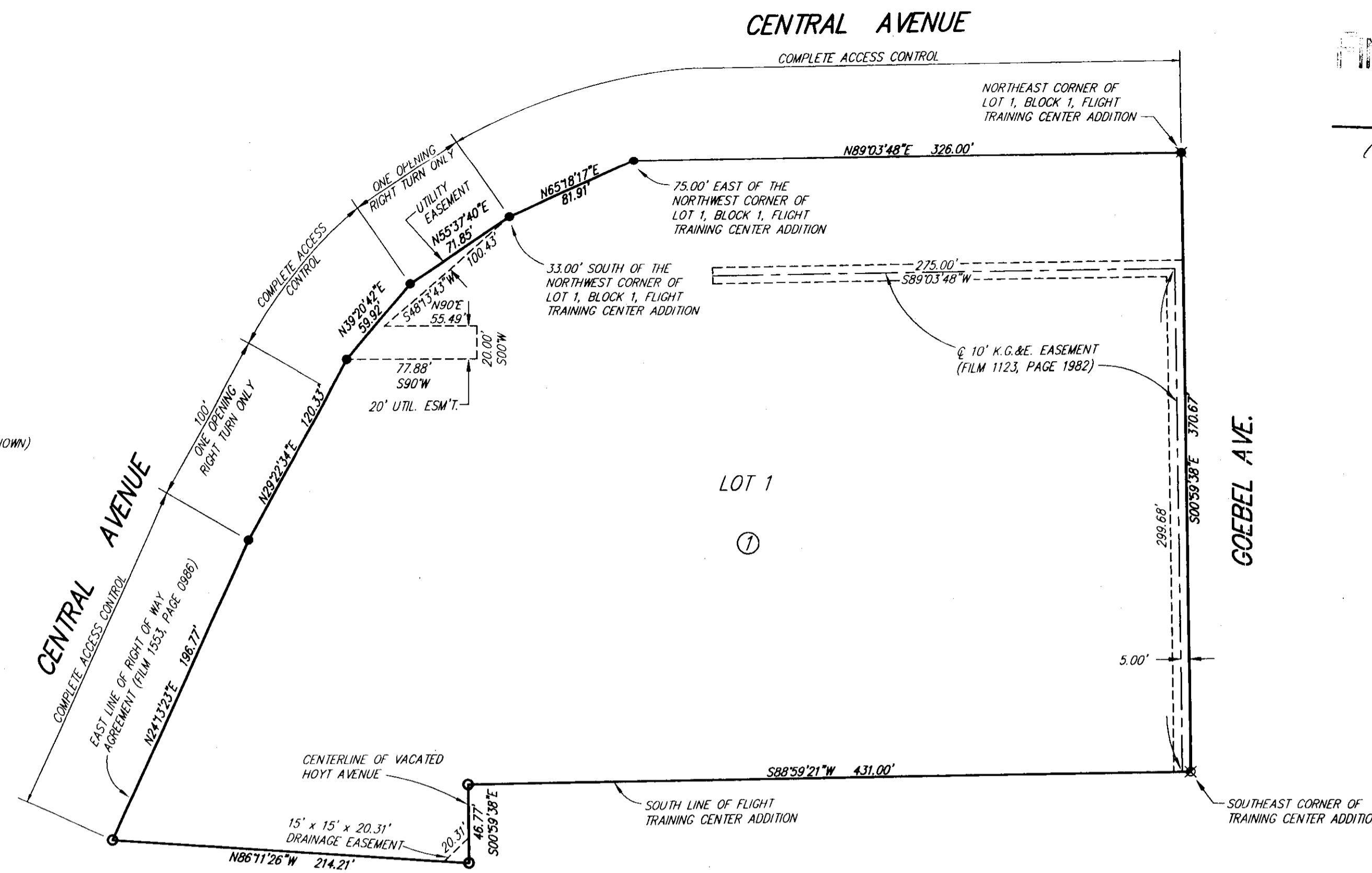
The foregoing instrument acknowledged before me, this _____ day of _____, 2008, by _____, on behalf of Hawker Beechcraft Corporation.

_____, Notary Public

My appointment expires _____

We the undersigned, holders of a mortgage on a portion of the above described property, do hereby consent to this plat of "FLIGHTSAFETY ADDITION" Sedgwick County, Kansas.

Credit Suisse, as administrative agent, Mortgagee



1" = 60'

P = Plotted
M = Measured
C = Calculated

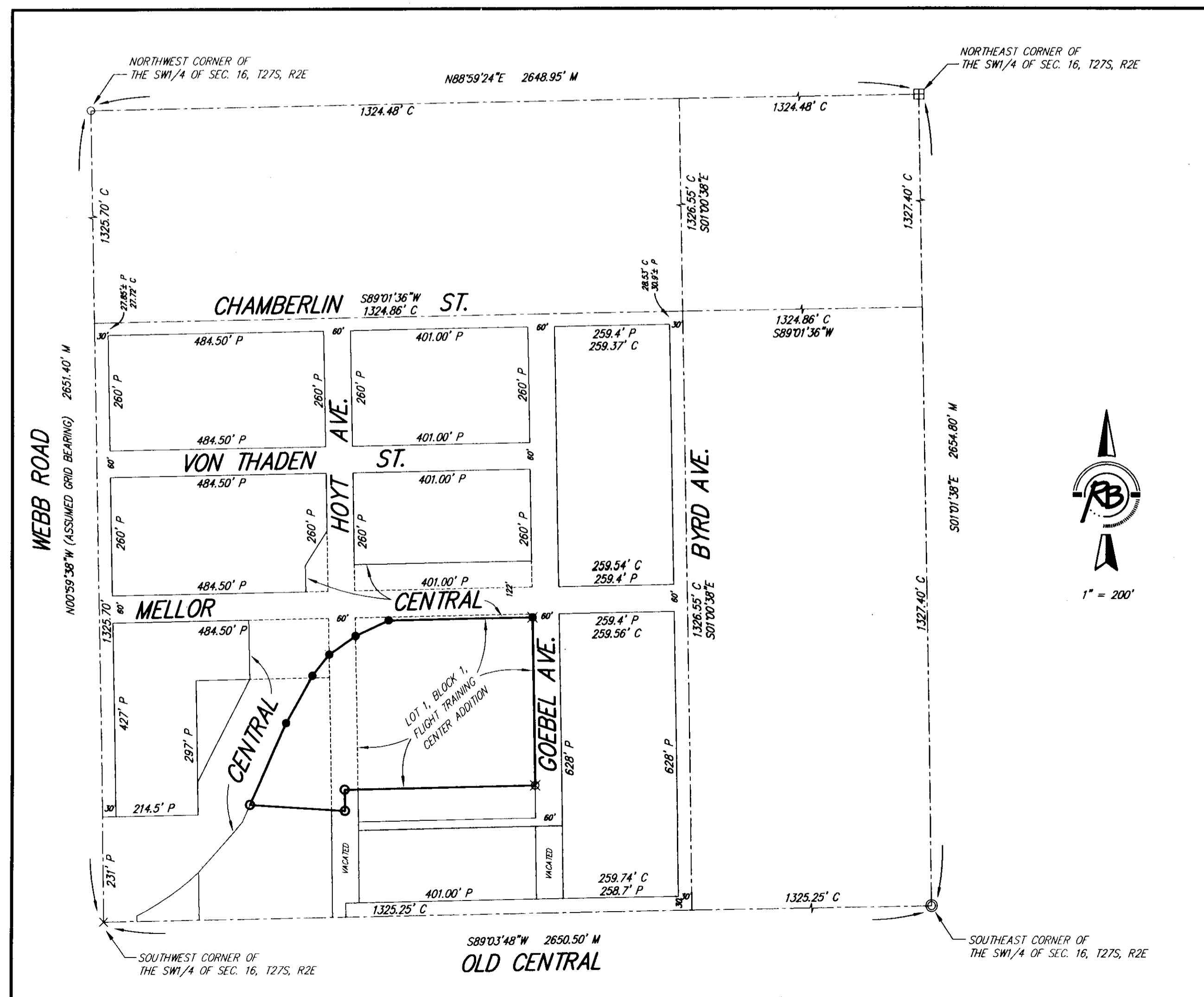
SURVEY MARKER LEGEND

- STONE WITH CHISELED CROSS (FOUND)
- X..... CHISELED CROSS (FOUND - ORIGIN UNKNOWN)
- 1/2" REBAR W/BAUGHMAN CAP (FOUND)
- 3/4" IRON PIPE IN THIMBLE (FOUND - ORIGIN UNKNOWN)
- ⊗..... CHISELED CROSS (SET)
- MAG NAIL (SET)
- 1/2" REBAR W/RUGGLES & BOHM CAP (SET)
- 5/8" REBAR W/RUGGLES & BOHM CAP (SET)

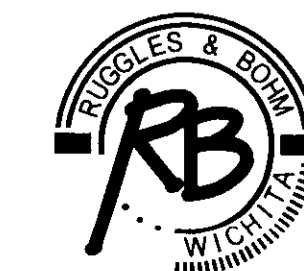
BENCH MARK: CITY OF WICHITA BENCH MARK AT THE SOUTHWEST CORNER OF A R.C.B.C. 200' NORTH OF CENTRAL AND 40.41' WEST OF BACK OF CURB OF EAST MEDIAN CURB ON WEBB ROAD ELEVATION = 1362.13 (NGVD29)

BENCH MARK: CHISELED SQUARE ON THE TOP OF CURB AT THE NORTH CURB RETURN ON THE EAST SIDE OF THE DRIVE ENTRANCE OFF OF OLD CENTRAL AT THE SOUTHWEST CORNER OF BLECH ACTIVITY CENTER ELEVATION = 1363.10 (NGVD29)

BENCH MARK: CHISELED SQUARE ON THE TOP OF CURB AT THE SOUTH CURB RETURN AT THE SOUTHWEST CORNER OF CENTRAL AND GOEBEL ELEVATION = 1375.02 (NGVD29)



1" = 200'



Ruggles & Bohm, P.A.
Engineering, Surveying, Land Planning

DWG FILE: SURVEY BASE
PROJECT NO. 3200E
MAY 4, 2008

924 North Main
Wichita, Kansas 67203
www.rbkansas.com

(316) 264-8008
(316) 264-4621 fax
E-mail: info@rbkansas.com