

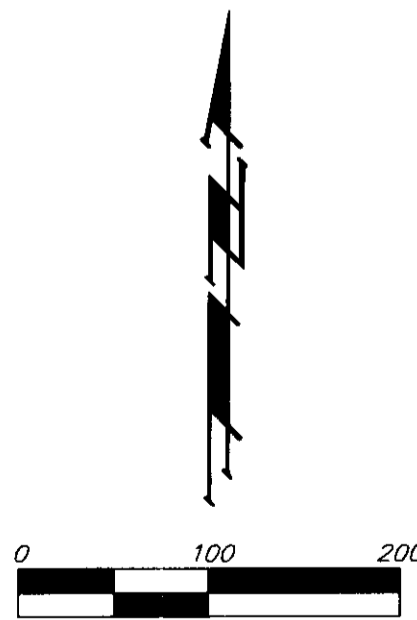
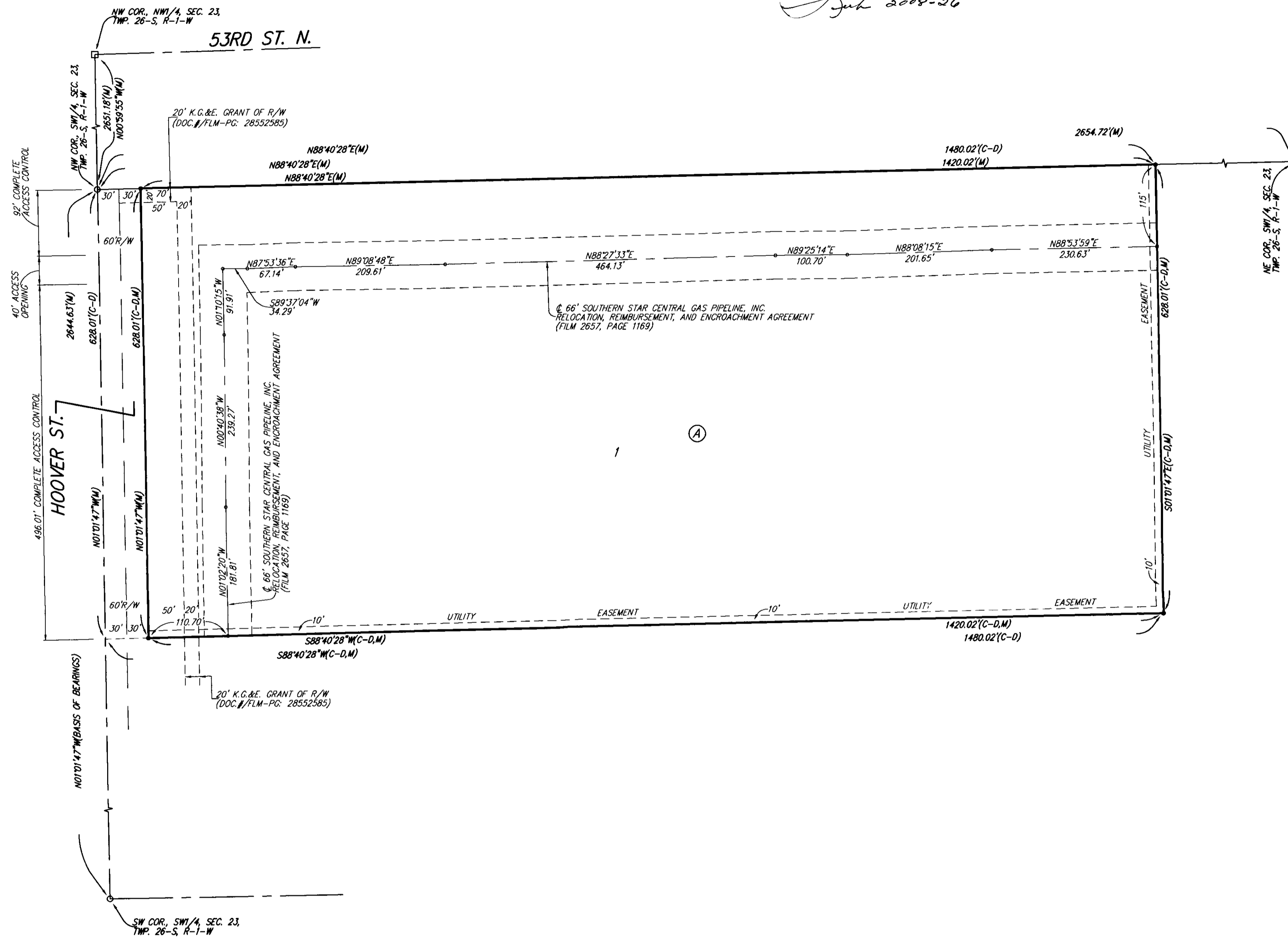
FILE COPY

KINGSBURY ADDITION

WICHITA, SEDGWICK COUNTY, KANSAS

FINAL TRACING RECORD

7-14-08
Jub 2008-26



- = #4 REBAR W/ "BAUGHMAN" SET (SET)
- = #4 REBAR W/ "GARBER" CAP (FOUND)
- △ = STONE (FOUND)
- = 1/2" IRON PIPE IN THIMBLE (FOUND)

(M) = MEASURED
(C-D) = CALCULATED PER DESCRIBED INFO.

NOTE: BLANKET RIGHT-OF-WAY AGREEMENT GRANTED TO THE DERBY OIL COMPANY, INC. OVER THE S1/2 OF SEC. 23, TWP. 26-S, R-1-W. (MISC. BOOK 267, PAGE 131).

NOTE: A DRAINAGE PLAN HAS BEEN DEVELOPED FOR THIS SUBDIVISION AND IS ON FILE WITH THE CITY OF WICHITA, KANSAS. DRAINAGE INTENT SHALL REMAIN AS DEPICTED OR AS MODIFIED WITH THE APPROVAL OF THE CITY ENGINEER OF THE CITY OF WICHITA, KANSAS. NO OBSTRUCTIONS WHICH IMPEDE THE FLOW OF THIS DRAINAGE PLAN SHALL BE ALLOWED.

State of Kansas) SS We, Baughman Company, P.A., Surveyors in Sedgwick County) aforesaid county and state do hereby certify that we have surveyed and platted "KINGSBURY ADDITION", Wichita, Sedgwick County, Kansas and that the accompanying plat is a true and correct exhibit of the property surveyed, described as follows: The west 1480 feet of the north 628 feet of the SW1/4 of Sec. 23, Twp. 26-S, R-1-W of the 6th P.M., Sedgwick County, Kansas, subject to road rights-of-way of record.

Existing public easements and dedications being vacated by virtue of K.S.A. 12-512(b).
Baughman Company, P.A.

Michael G. Conrey, Surveyor

This plat of "KINGSBURY ADDITION", Wichita, Sedgwick County, Kansas has been submitted to and approved by the Wichita-Sedgwick County Metropolitan Area Planning Commission, Wichita, Kansas.

Dated this _____ day of _____, 2008.
Wichita-Sedgwick County Metropolitan Area Planning Commission

M. S. Mitchell, Chair

John L. Schlegel, Secretary

This plat approved and all dedications shown hereon accepted by the City Council of the City of Wichita, Kansas, this _____ day of _____, 2008.

Carl Brewer, Mayor

Karen Sublett, City Clerk

Reviewed in accordance with K.S.A. 58-2005 on this _____ day of _____, 2008.

Know all men by these presents that we, the undersigned, have caused the land in the surveyors certificate to be platted into a Lot, a Block, and a Street, to be known as "KINGSBURY ADDITION", Wichita, Sedgwick County, Kansas. The utility easements are hereby granted as indicated for the construction and maintenance of all public utilities. The street is hereby dedicated to and for the use of the public. Access controls shall be as depicted on the face of the plat and are hereby granted to the City of Wichita, Kansas.

City of Wichita, Kansas, a municipal corporation

Carl Brewer, Mayor

ATTEST: Karen Sublett, City Clerk

Tricia L. Robella, L.S. #1246
Deputy County Surveyor
Sedgwick County, Kansas

Entered on transfer record this _____ day of _____, 2008.

Don Brace, County Clerk

State of Kansas) SS This is to certify that this plat has been Sedgwick County) filed for record in the office of the Register of Deeds, this _____ day of _____, 2008 at _____ o'clock _____ M; and is duly recorded.

Bill Meek, Register of Deeds

Tonya Buckingham, Deputy

State of Kansas) SS The foregoing instrument acknowledged before Sedgwick County) me, this _____ day of _____, 2008, by Carl Brewer, Mayor of the City of Wichita, Kansas, a municipal corporation, on behalf of the corporation.

Notary Public

My App't. Exp. _____