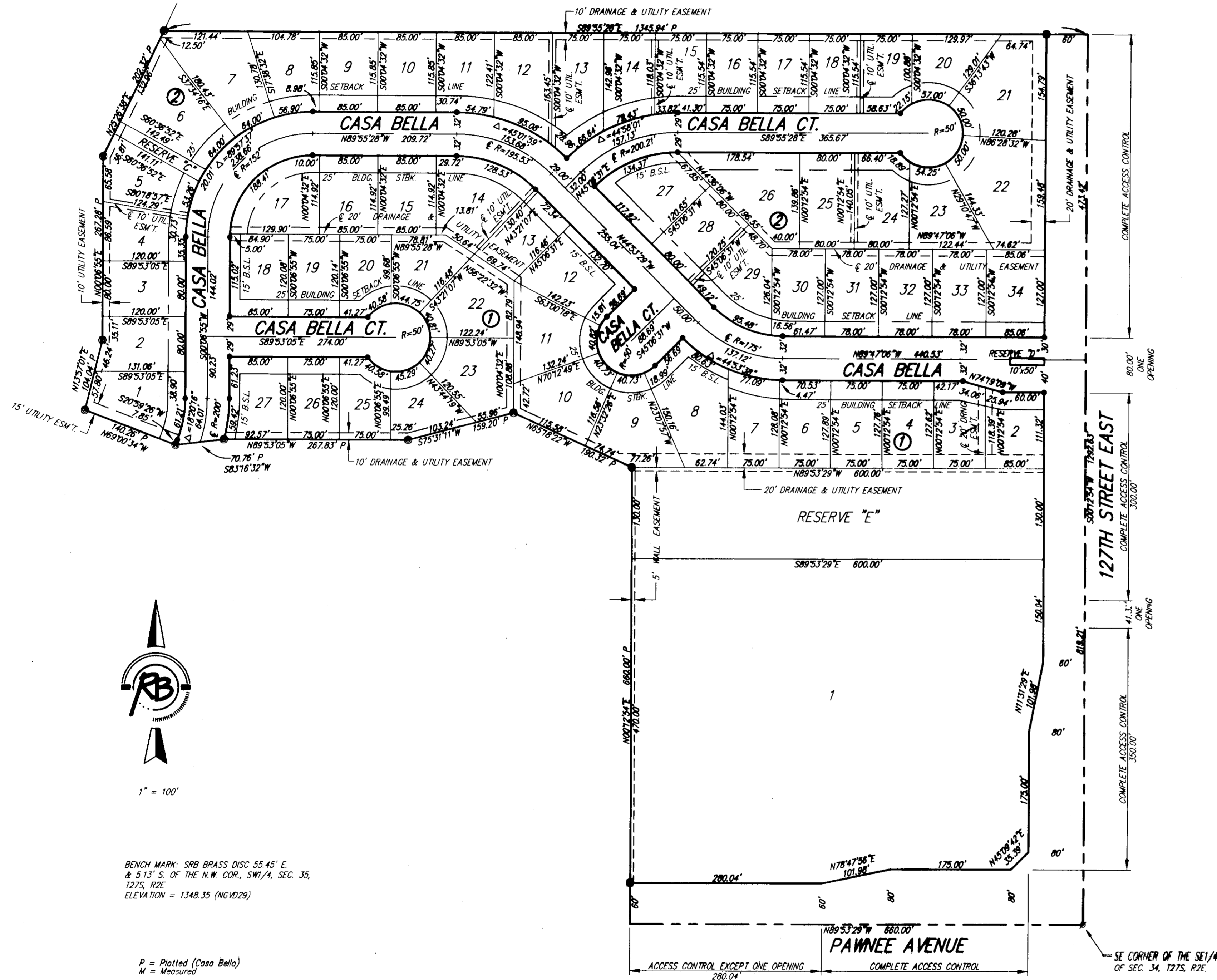


FILE COPY
CASA BELLA SECOND ADDITION
 FINAL TRACING RECD
 Wichita, Sedgwick County, Kansas

8-06-08
 2008-34



BENCH MARK: SRB BRASS DISC 55.45' E & 5.13' S OF THE N.W. COR., SW1/4, SEC. 35, T27S, R2E ELEVATION = 1348.35 (NGVD29)

P = Platted (Casa Bella)
 M = Measured

- SURVEY MARKER LEGEND**
- PK NAIL IN CONCRETE (FOUND - ORIGIN UNKNOWN)
 - 1/2" IRON PIPE (FOUND - ORIGIN UNKNOWN)
 - ⊙ 3/4" IRON PIPE (FOUND - ORIGIN UNKNOWN)
 - ⊗ 5/8" REBAR W/GARBER CAP (FOUND)
 - ⊗ 1" BAR (FOUND - ORIGIN UNKNOWN)
 - ⊗ 5/8" REBAR W/SRB CAP (FOUND)
 - ⊗ 5/8" REBAR W/R&B CAP (FOUND)
 - ⊗ 5/8" REBAR W/R&B CAP (SET)

BLOCK	LOT NO.	ELEVATION (NGVD29)
2	1, 2, 3, 4, 5, 6, 7	1,345.4
3	10, 11, 12	1,345.4
3	1, 2, 3, 4, 5, 6, 7, 8, 9	1,339.4
6	1, 2, 3, 4, 5	1,336.8

State of Kansas)
 Sedgwick County) SS

We, Ruggles & Bohm, P.A., Land Surveyors in aforesaid county and state, do hereby certify that, under the supervision of the undersigned, we have surveyed and platted "CASA BELLA SECOND ADDITION", Wichita, Sedgwick County, Kansas, and that the accompanying plat is a true and correct exhibit of the property surveyed, described as follows:

LEGAL DESCRIPTION:
 The SE1/4 of Section 34, T27S, R2E of the 6th P.M., Sedgwick County, Kansas, EXCEPT the NE1/4 of said SE1/4, AND EXCEPT that portion platted as Casa Bella, Wichita, Sedgwick County, Kansas.

All public easements and dedications are hereby vacated by virtue of K.S.A. 12-512(b).

Ruggles & Bohm, P.A.

Thomas C. Ruggles
 Thomas C. Ruggles Land Surveyor

Know all men by these presents that we, the undersigned, have caused the land described in the surveyor's certificate to be platted into Lots, Blocks, Reserves and Streets, to be known as "CASA BELLA SECOND ADDITION", Wichita, Sedgwick County, Kansas. Utility easements are hereby granted for the construction and maintenance of all public utilities. Drainage easements are hereby granted to the public as indicated for drainage purposes. Reserves "A" and "B" are hereby reserved for irrigation, lighting, landscaping, gazebos, playground, structures, picnic areas/tables with canopies, and utilities confined to easements. Reserve "C" is hereby reserved for irrigation, walls, signage, gazebos, playground structures, picnic areas/ tables with canopies, walks, lighting, landscaping, berms, lakes, drainage, drainage structures, and utilities confined to easements. Reserve "D" is hereby reserved for irrigation and entry features. Reserve "E" is hereby reserved for irrigation, walls, signage, lighting, landscaping, lakes, drainage, drainage structures, and utilities confined to easements. The Reserves shall be owned and maintained by the Home Owners Association for the addition. The streets are hereby dedicated to and for the use of the public. Access Controls as indicated are hereby granted to the appropriate governing body. A drainage plan has been developed for this plat; all drainage easements and reserves shall remain at established grades, or as modified with the approval of the City Engineer, and unobstructed to allow for the conveyance of storm water.

Tara Development Inc.
Eugene Vitarelli
 Eugene Vitarelli President

State of Kansas)
 Sedgwick County) SS

The foregoing instrument acknowledged before me, this 31st day of July, 2008, by Eugene Vitarelli, President of Tara Development Inc., on behalf of the corporation.

Mildred E. Franz
 Mildred E. Franz Notary Public

My appointment expires 02-13-2011

We the undersigned, holders of a mortgage on a portion of the above described property, do hereby consent to this plat of "CASA BELLA SECOND ADDITION" Wichita, Sedgwick County, Kansas.

Collin Stieben
 Collin Stieben
 Commerce Bank, N.A.
 Assistant Vice President

State of Kansas)
 Sedgwick County) SS

The foregoing instrument acknowledged before me this 5th day of August, 2008, by Collin Stieben, Assistant Vice President of Commerce Bank, N.A., on behalf of the Bank.

Patsy E. Nellis
 Patsy E. Nellis Notary Public

My appointment expires 12-31-09

This plat of "CASA BELLA SECOND ADDITION", Wichita, Sedgwick County, Kansas, has been submitted to and approved by the Wichita-Sedgwick County Metropolitan Area Planning Commission, Wichita, Kansas.

Dated this ___ day of ___, 2008.
 Wichita-Sedgwick County Metropolitan Area Planning Commission

M.S. Mitchell
 M.S. Mitchell Chairman
John L. Schlegel
 John L. Schlegel Secretary

This plat approved and all dedications shown hereon accepted by the City Council of the City of Wichita, Kansas, this ___ day of ___, 2008.

At the Direction of the City Council
Carl Brewer
 Carl Brewer Mayor
Karen Sublett
 Karen Sublett City Clerk

Reviewed in accordance with K.S.A. 58-2005 on this ___ day of ___, 2008.
E. Robello
 E. Robello Deputy County Surveyor
 Sedgwick County Kansas

Entered on transfer record this ___ day of ___, 2008.
Don Brace
 Don Brace County Clerk

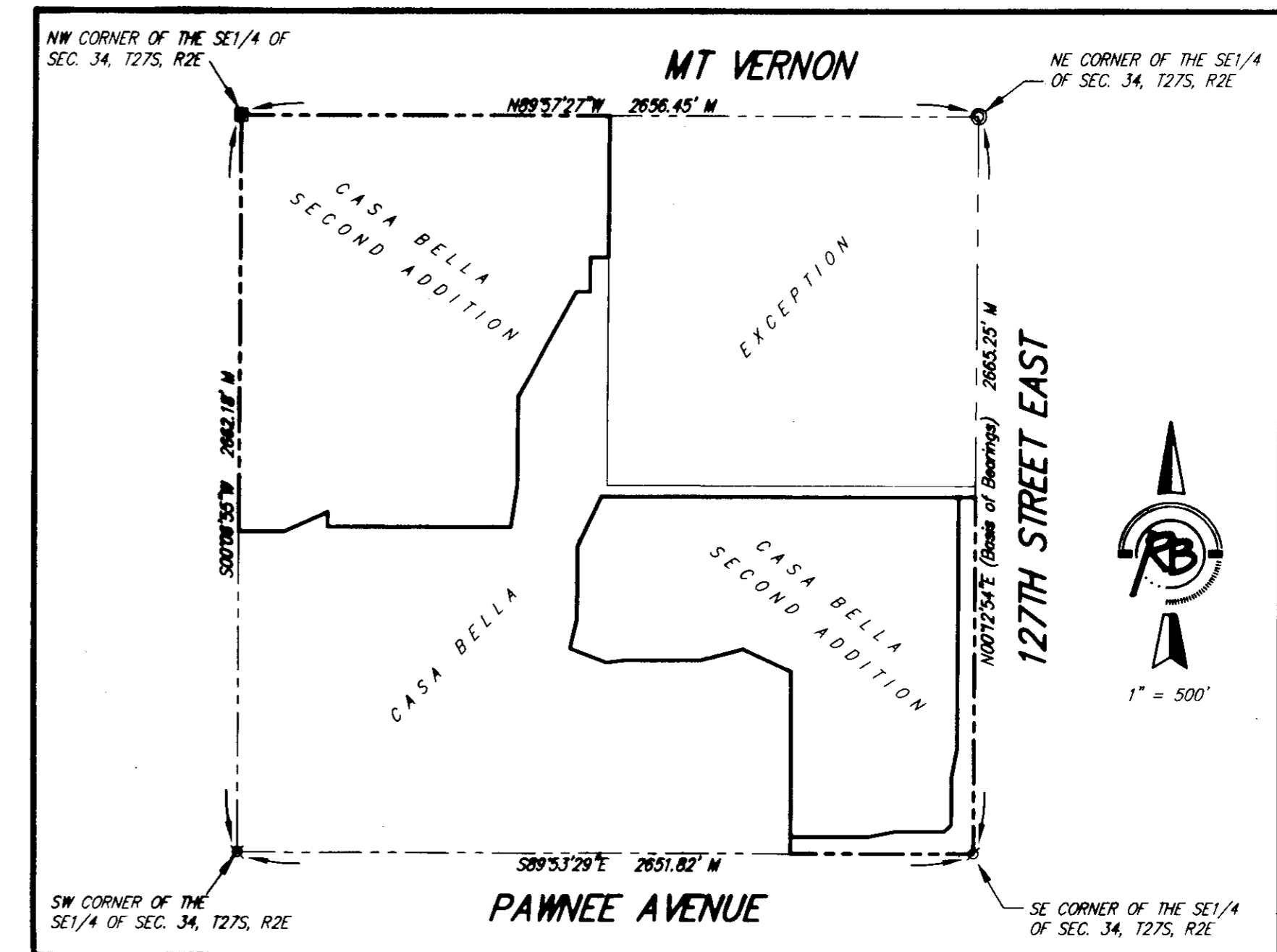
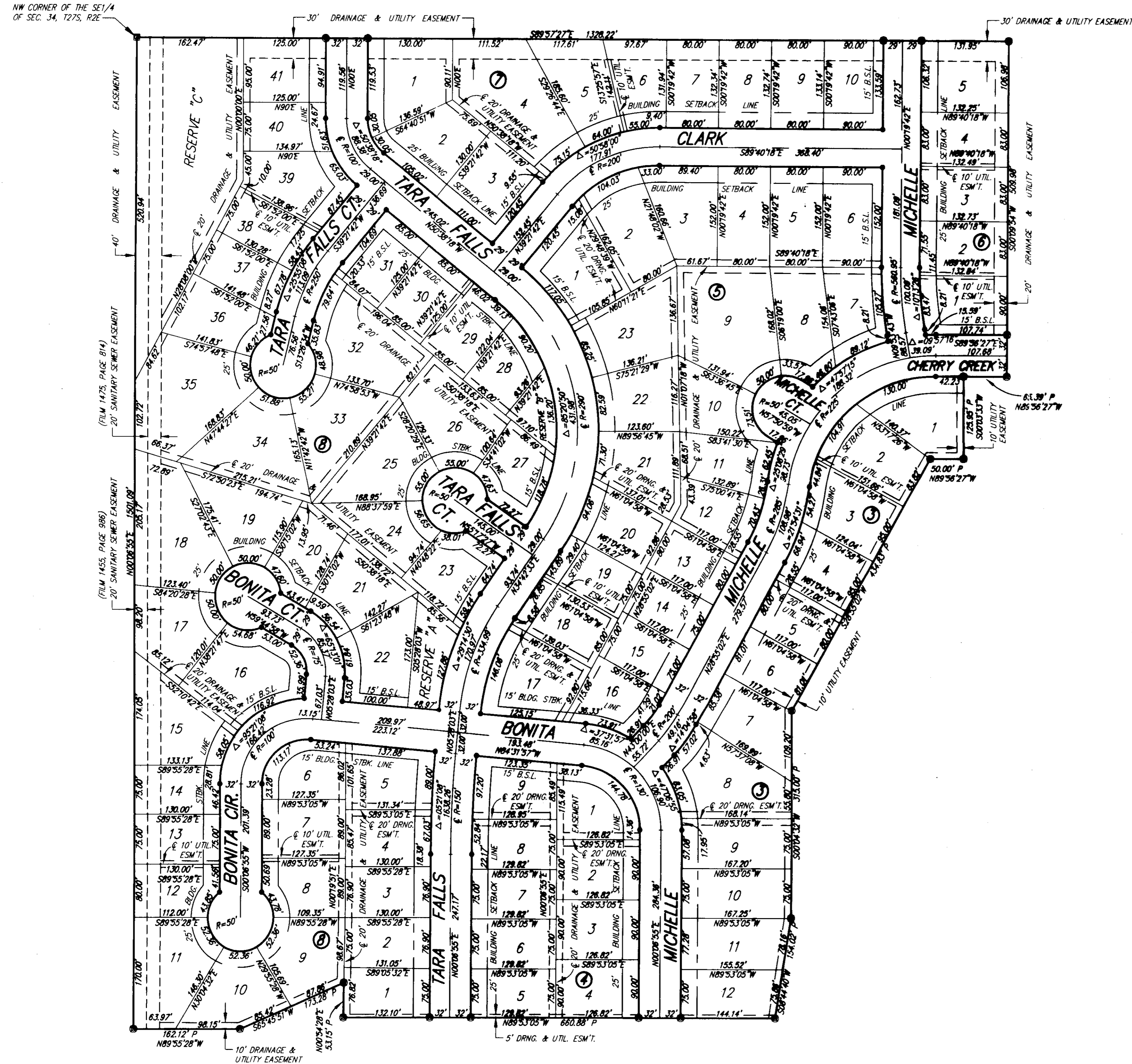
State of Kansas)
 Sedgwick County) SS

This is to certify that this plat has been filed for record in the office of the Register of Deeds, this ___ day of ___, 2008, at ___ o'clock ___ M, and is duly recorded.

Bill Meek
 Bill Meek Register of Deeds
Tonya Buckingham
 Tonya Buckingham Deputy

CASA BELLA SECOND ADDITION

Wichita, Sedgwick County, Kansas



1" = 100'

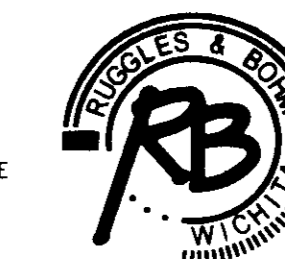
BENCH MARK: SRB BRASS DISC 55.45' E.
 & 5.13' S. OF THE N.W. COR., SW 1/4, SEC. 35,
 T27S, R2E
 ELEVATION = 1348.35 (NGVD29)

P = Platted (Casa Bella)
 M = Measured

SURVEY MARKER LEGEND

- PK NAIL IN CONCRETE (FOUND - ORIGIN UNKNOWN)
- 1/2" IRON PIPE (FOUND - ORIGIN UNKNOWN)
- 3/4" IRON PIPE (FOUND - ORIGIN UNKNOWN)
- 5/8" REBAR W/GARBER CAP (FOUND)
- 1" BAR (FOUND - ORIGIN UNKNOWN)
- 5/8" REBAR W/SRB CAP (FOUND)
- 5/8" REBAR W/R&B CAP (FOUND)
- 5/8" REBAR W/R&B CAP (SET)

MINIMUM BUILDING PAD ELEVATION FOR LOWEST OPENING INTO STRUCTURES		
BLOCK	LOT NO.	ELEVATION (NGVD29)
2	1, 2, 3, 4, 5, 6, 7	1345.4
3	10, 11, 12	1345.4
3	1, 2, 3, 4, 5, 6, 7, 8, 9	1339.4
6	1, 2, 3, 4, 5	1336.8



Ruggles & Bohm, P.A.

Engineering, Surveying, Land Planning

924 North Main (316) 264-8008
 Wichita, Kansas 67203 (316) 264-4621 fax
 www.rbkansas.com E-mail: info@rbkansas.com

DWG FILE: SURVEY BASE
 PROJECT NO. 3233P
 JULY 24, 2008