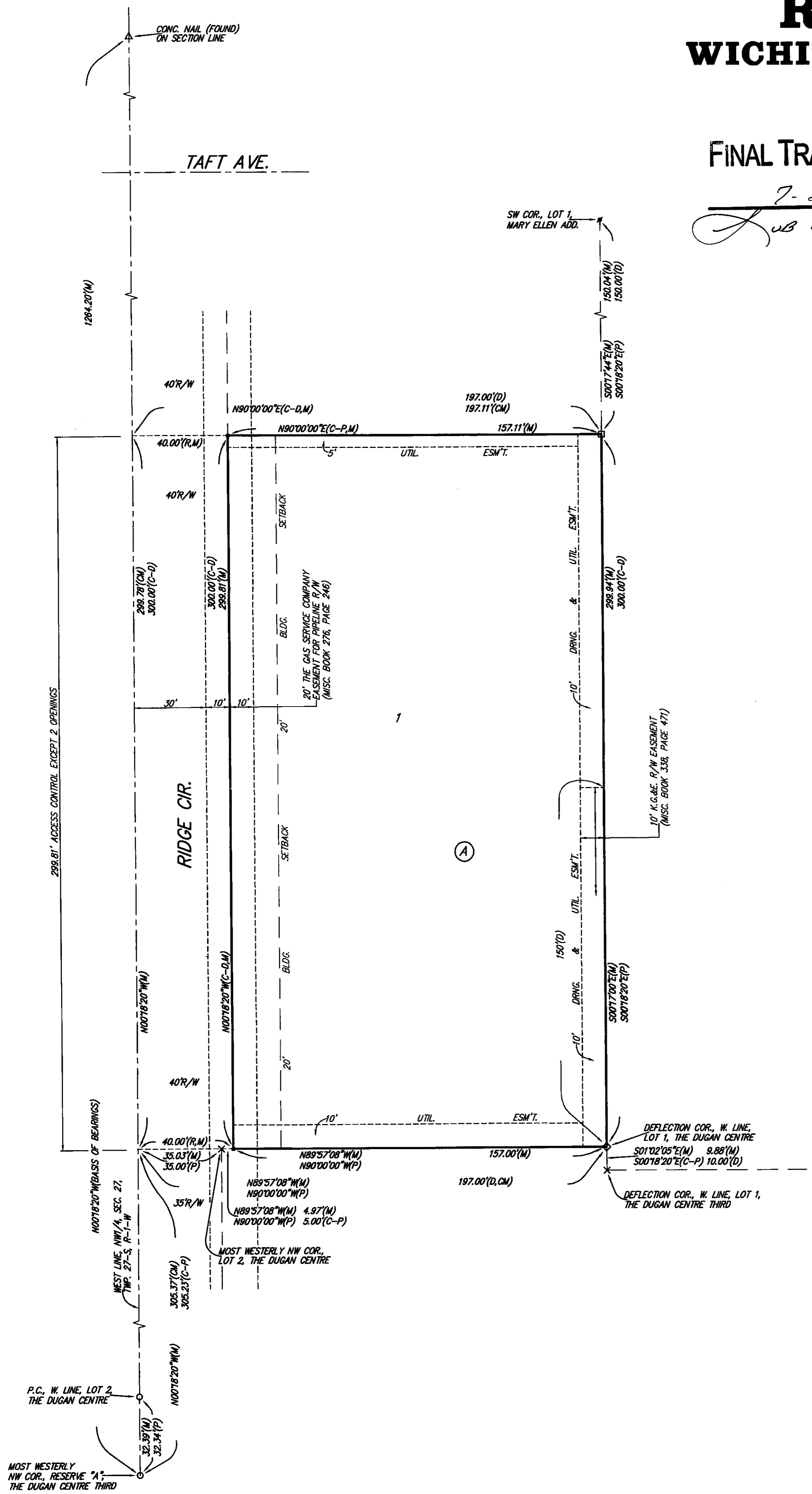


# RISHEL ADDITION WICHITA, SEDGWICK COUNTY, KANSAS

FILE COPY

FINAL TRACING REC'D

7-29-08  
UB 2008-25



- = #4 REBAR W/ "BAUGHMAN" CAP (SET)
- = #4 REBAR W/ "BAUGHMAN" CAP (FOUND)
- = 1/2" IRON (FOUND)
- = 3/4" DRIFT PIN (FOUND)
- x = CROSS (FOUND)
- △ = CONCRETE NAIL (FOUND)
- ◇ = #4 REBAR (FOUND)

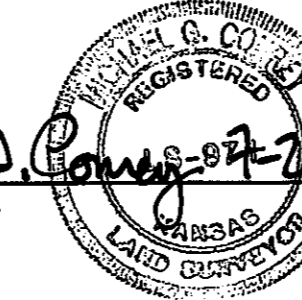
- (M) = MEASURED
- (P) = PLATTED
- (D) = DESCRIBED
- (R) = RECORD MEASUREMENT
- (CM) = CALCULATED PER MEASURED INFO.
- (C-D) = CALCULATED PER DESCRIBED INFO.
- (C-P) = CALCULATED PER PLATTED INFO.

State of Kansas) SS We, Baughman Company, P.A., Surveyors in Sedgwick County) do hereby certify that we have surveyed and platted "RISHEL ADDITION", Wichita, Sedgwick County, Kansas and that the accompanying plat is a true and correct exhibit of the property surveyed, described as follows: The south 150 feet of the north 480 feet of the west 197 feet of the S1/2 of the NW1/4 of Sec. 27, Twp. 27-S, R-1-W of the 6th P.M., Sedgwick County, Kansas, except the west 40 feet for road, together with the south 150 feet of the north 630 feet of the west 197 feet of the S1/2 of said NW1/4, except the west 40 feet for road.

Existing public easements and dedications being vacated by virtue of K.S.A. 12-512(b).

Baughman Company, P.A.

Michael G. Conrey, Surveyor



Know all men by these presents that we, the undersigned, have caused the land in the surveyors certificate to be platted into a Lot and a Block, to be known as "RISHEL ADDITION", Wichita, Sedgwick County, Kansas. The utility easements are hereby granted as indicated for the construction and maintenance of all public utilities. The drainage and utility easement is hereby granted as indicated for drainage purposes and for the construction and maintenance of all public utilities. Access controls shall be as depicted on the face of the plat and are hereby granted to the City of Wichita, Kansas. The permitted access opening locations shall be as determined by the City Engineer for the City of Wichita, Kansas.

Howard A. Rishel Trust  
dated September 14, 2000

Howard A. Rishel, Trustee

Doris M. Rishel, Trustee

State of Kansas) SS The foregoing instrument acknowledged before me, this 28th day of July, 2008, by Howard A. Rishel and Doris M. Rishel, Trustees of the Howard A. Rishel Trust dated September 14, 2000, on behalf of the trust.

JUDITH M. TERHUNE  
Notary Public - State of Kansas  
My App't. Expires 11-7-09

Judith M. Terhune, Notary Public

My App't. Exp. 11-7-09

We, the undersigned holders of mortgages on the above described property, do hereby consent to this plat of "RISHEL ADDITION", Wichita, Sedgwick County, Kansas.

First State Bank and Trust

Elaine Campbell, V.P.

State of Kansas) SS The foregoing instrument acknowledged before me, this 29th day of July, 2008, by ELAINE CAMPBELL, VICE PRESIDENT of First State Bank and Trust, on behalf of the bank.

Dustin Stuever, Notary Public

My App't. Exp. 6-5-2010

DUSTIN STUEVER  
Notary Public - State of Kansas  
My App't. Expires 6-5-2010

This plat of "RISHEL ADDITION", Wichita, Sedgwick County, Kansas has been submitted to and approved by the Wichita-Sedgwick County Metropolitan Area Planning Commission, Wichita, Kansas.

Dated this 29th day of July, 2008.  
Wichita-Sedgwick County Metropolitan Area Planning Commission

M. S. Mitchell, Chair

John L. Schlegel, Secretary

This plat approved and all dedications shown hereon accepted by the City Council of the City of Wichita, Kansas, this 29th day of July, 2008.

Carl Brewer, Mayor

Karen Sublett, City Clerk

Reviewed in accordance with K.S.A. 58-2005 on this 29th day of July, 2008.

Tricia L. Robello, L.S. #1246  
Deputy County Surveyor  
Sedgwick County, Kansas

Entered on transfer record this 29th day of July, 2008.

Don Brace, County Clerk

State of Kansas) SS This is to certify that this plat has been filed for record in the office of the Register of Deeds, this 29th day of July, 2008 at 10 o'clock A.M.; and is duly recorded.

Bill Meek, Register of Deeds

Tonya Buckingham, Deputy

NOTE: A DRAINAGE PLAN HAS BEEN DEVELOPED FOR THIS SUBDIVISION AND IS ON FILE WITH THE CITY OF WICHITA, KANSAS. DRAINAGE INTENT SHALL REMAIN AS DEPICTED OR AS MODIFIED WITH THE APPROVAL OF THE CITY ENGINEER OF THE CITY OF WICHITA, KANSAS. NO OBSTRUCTIONS WHICH IMPEDE THE FLOW OF THIS DRAINAGE PLAN SHALL BE ALLOWED.

Baughman Company, P.A.  
315 Ellis St. Wichita, KS 67211 P 316-262-7271 F 316-262-0149  
ENGINEERING | SURVEYING | PLANNING | LANDSCAPE ARCHITECTURE  
F:\PLAT\RISHEL ADDITION\DWG\RISHEL.FDWG\MCC