

FINAL TRACING REC'D CUNDIFF ADDITION SEDGWICK COUNTY, KANSAS

9-10-08
Sub 2008-38

State of Kansas) SS We, Baughman Company, P.A., Surveyors in
Sedgwick County) and state do hereby certify that we have surveyed and
platted "CUNDIFF ADDITION", Sedgwick County, Kansas and that the
accompanying plat is a true and correct exhibit of the property surveyed,
described as follows: The NE 1/4 of the SE 1/4 of Section 13, Twp. 25-S,
R-1-W of the 6th P.M., Sedgwick County, Kansas, except a tract of land
described as beginning at the NE corner of the NE 1/4 of the SE 1/4 of
Section 13, Twp. 25-S, R-1-W of the 6th P.M., Sedgwick County, Kansas;
thence southerly along the east line of said quarter, 337.35 feet;
thence westerly with an interior angle of 89°50'09", a distance of 1,323.05 feet;
thence northerly with an interior angle of 90°07'13", 339.21 feet to the
north line of said quarter; thence easterly along the north line of said
quarter, 1,322.80 feet to the point of beginning, and except a tract of
land in the NE 1/4 of the SE 1/4 of Sec. 13, Twp. 25-S, R-1-W of the
6th P.M., Sedgwick County, Kansas, described as the south 10 acres of
the NE 1/4 of the SE 1/4.

Existing public easements and dedications
being vacated by virtue of K.S.A. 12-512(b),
Baughman Company, P.A.

This plat of "CUNDIFF ADDITION", Sedgwick
County, Kansas has been submitted to and approved by the
Wichita-Sedgwick County Metropolitan Area Planning Commission, Wichita,
Kansas.

Dated this _____ day of _____, 2008,
Wichita-Sedgwick County Metropolitan Area Planning Commission

_____, Chair
M. S. Mitchell
_____, Secretary
John L. Schlegel

This plat approved and all dedications
shown hereon accepted by the Board of Commissioners of
Sedgwick County, Kansas, this _____ day of _____, 2008.

_____, Chairman
Thomas G. Winters

ATTEST: _____, County Clerk
Don Brace

Reviewed in accordance with K.S.A. 58-2005
on this _____ day of _____, 2008.

Tricia L. Robello, L.S. #1246
Deputy County Surveyor
Sedgwick County, Kansas

Entered on transfer record this _____ day
of _____, 2008.

_____, County Clerk
Dan Brace

State of Kansas) SS This is to certify that this plat has been
Sedgwick County) filed for record in the office of the Register of Deeds, this _____ day
of _____, 2008 at _____ o'clock _____ M.; and is duly recorded.

_____, Register of Deeds
Bill Meek

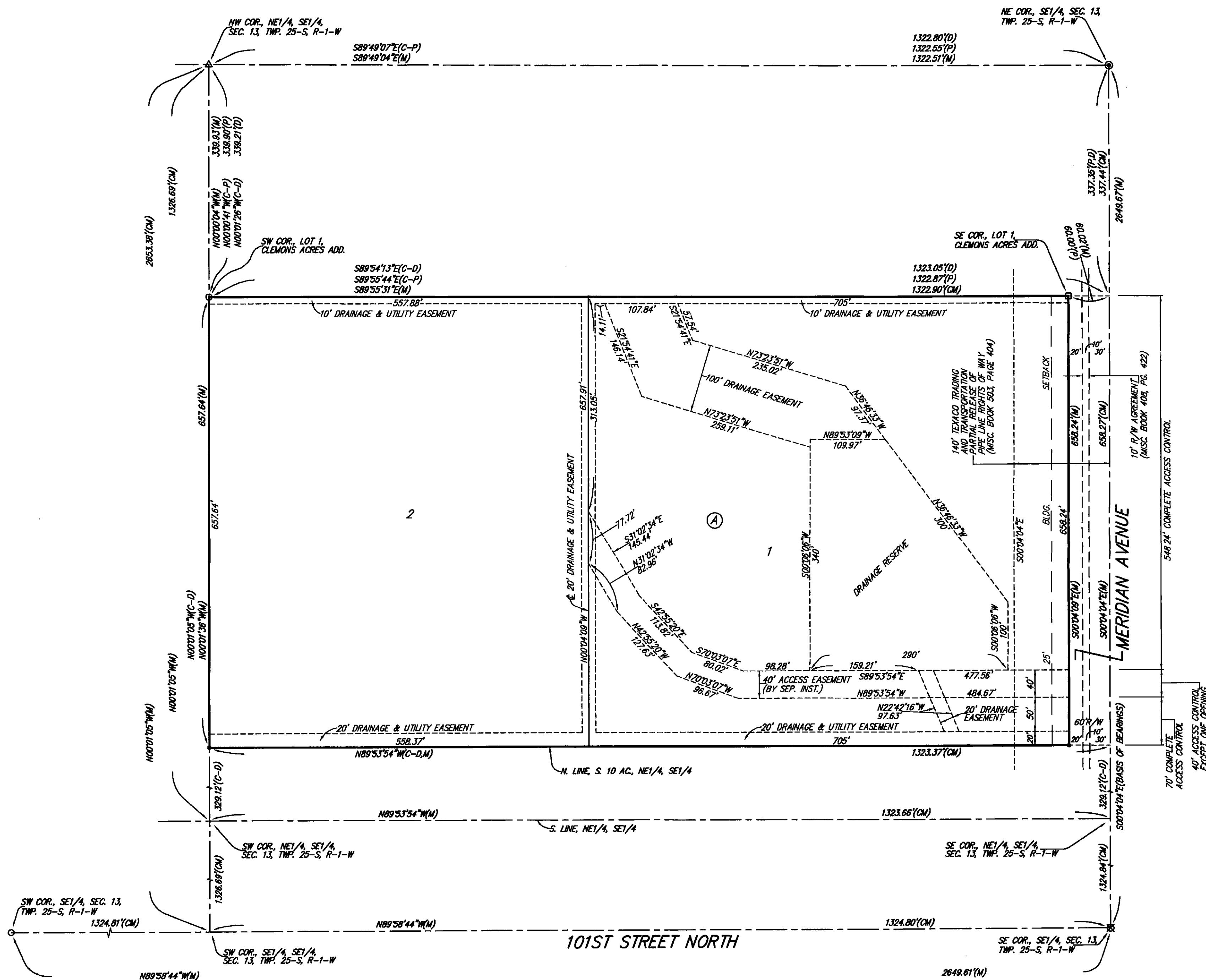
_____, Deputy
Tonya Buckingham

State of Kansas) SS The foregoing instrument acknowledged before
Sedgwick County) me, this 8th day of SEPTEMBER, 2008, by David Cundiff and Jan
Cundiff, husband and wife.

JUDITH M. TERHUNE
Notary Public - State of Kansas
My App't. Expires 11-7-09

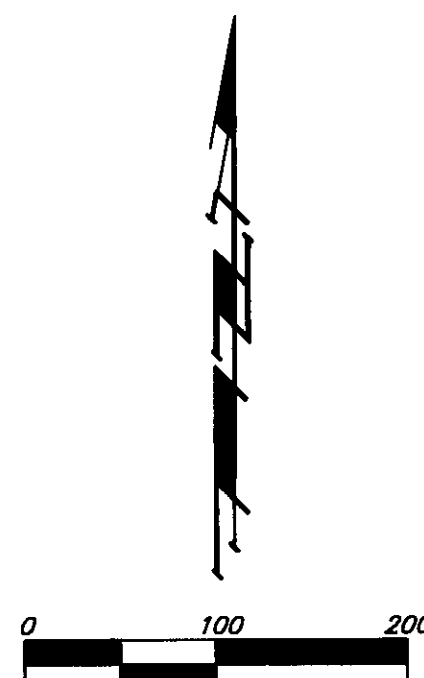
Judith M. Terhune, Notary Public
JUDITH M. TERHUNE

My App't. Exp. 11-7-09



- = #4 REBAR W/ "BAUGHMAN" CAP (SET)
- ⊙ = #4 REBAR W/ "BROSEMER" CAP (FOUND)
- ⊗ = #5 REBAR (FOUND)
- △ = STONE W/ CROSS (FOUND)
- = 1/2" IRON (FOUND)
- = #4 REBAR W/ "SAVOY" CAP (FOUND)

- (M) = MEASURED
- (P) = PLATTED
- (D) = DESCRIBED
- (CM) = CALCULATED PER MEASURED INFO.
- (C-P) = CALCULATED PER PLATTED INFO.
- (C-D) = CALCULATED PER DESCRIBED INFO.



LOT	BLOCK	ELEVATION
1	A	1398.0

BENCHMARK:
SITE BENCHMARK, SMALL RAILROAD SPIKE IN SOUTH
FACE OF TRANSFORMER/POWER POLE 24' E. & 75' N.
OF THE NE CORNER OF HOUSE #10459 N. MERIDIAN.
ELEV. = 1398.34 (NAVD88)

NOTE:
A MASTER GRADING PLAN FOR DRAINAGE HAS BEEN DEVELOPED FOR THIS
SUBDIVISION AND IS ON FILE IN THE OFFICE OF THE COUNTY ENGINEER OR
THE ENGINEER FOR THE APPROPRIATE GOVERNING BODY. ALL DRAINAGE
EASEMENTS, RIGHTS-OF-WAY, OR RESERVES SHALL REMAIN AT ESTABLISHED
GRADES OR AS MODIFIED WITH THE APPROVAL OF THE COUNTY ENGINEER
OR THE ENGINEER FOR THE APPROPRIATE GOVERNING BODY. NO OBSTRUCTIONS
WHICH IMPEDE THE FLOW OF THIS DRAINAGE SYSTEM SHALL BE ALLOWED.

NOTE:
KANSAS GAS AND ELECTRIC COMPANY AFFIDAVIT TO
SUPPLY ELECTRIC SERVICE TO 10459 NORTH MERIDIAN.
(FILM 288, PAGE 1274)