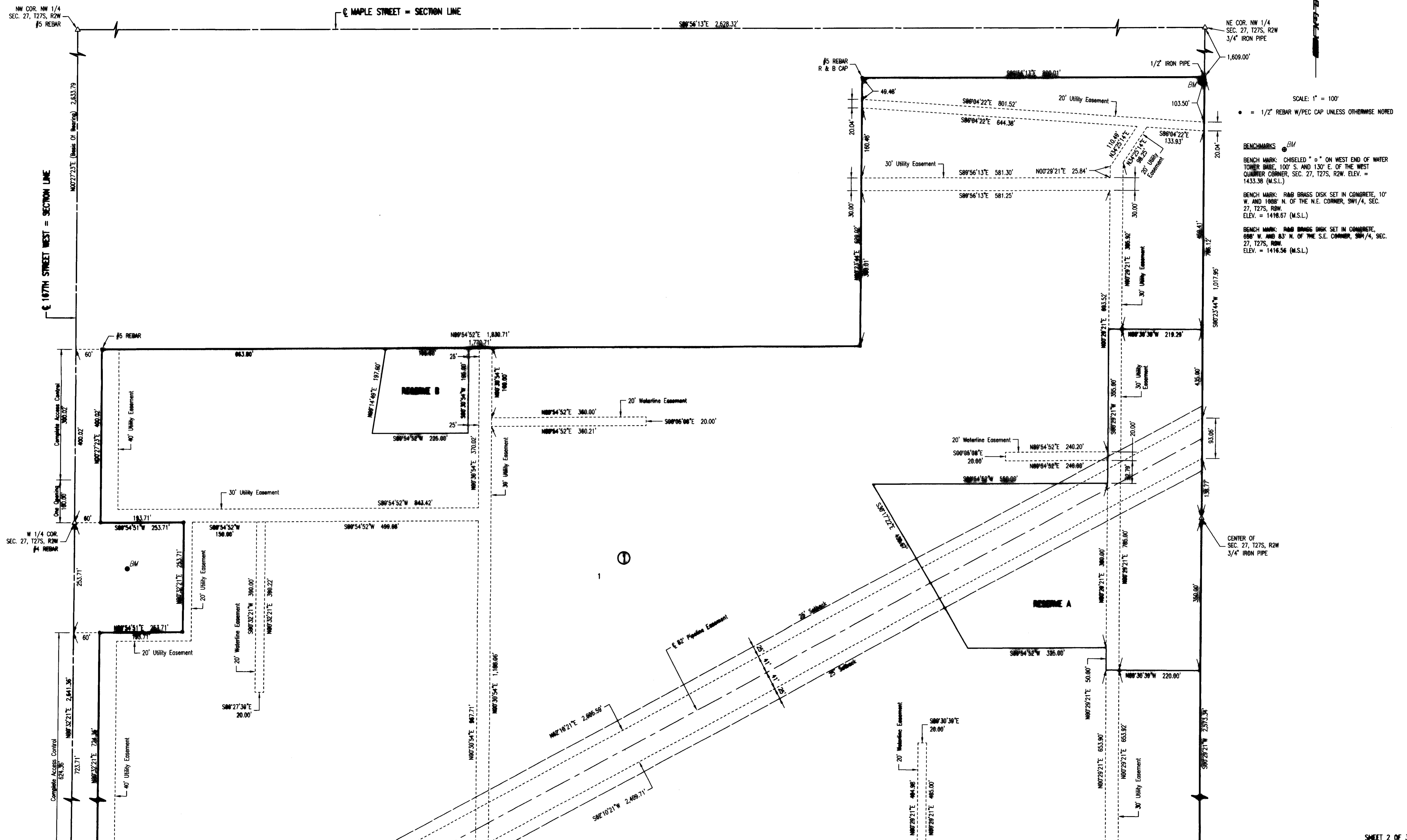


GODDARD SCHOOL 2ND ADDITION

AN ADDITION TO WICHITA, SEDGWICK COUNTY, KANSAS



SCALE: 1" = 100'
 • = 1/2" REBAR W/PEC CAP UNLESS OTHERWISE NOTED

BENCHMARKS BM
 BENCH MARK: CHISELED "o" ON WEST END OF WATER TOWER BASE, 100' S. AND 130' E. OF THE WEST QUARTER CORNER, SEC. 27, T27S, R2W. ELEV. = 1433.38 (M.S.L.)
 BENCH MARK: R&B BRASS DISK SET IN CONCRETE, 10' W. AND 1088' N. OF THE N.E. CORNER, SW1/4, SEC. 27, T27S, R2W. ELEV. = 1418.67 (M.S.L.)
 BENCH MARK: R&B BRASS DISK SET IN CONCRETE, 688' W. AND 83' N. OF THE S.E. CORNER, SW1/4, SEC. 27, T27S, R2W. ELEV. = 1416.56 (M.S.L.)

GODDARD SCHOOL 2ND ADDITION

AN ADDITION TO WICHITA, SEDGWICK COUNTY, KANSAS

SCALE: 1" = 100'

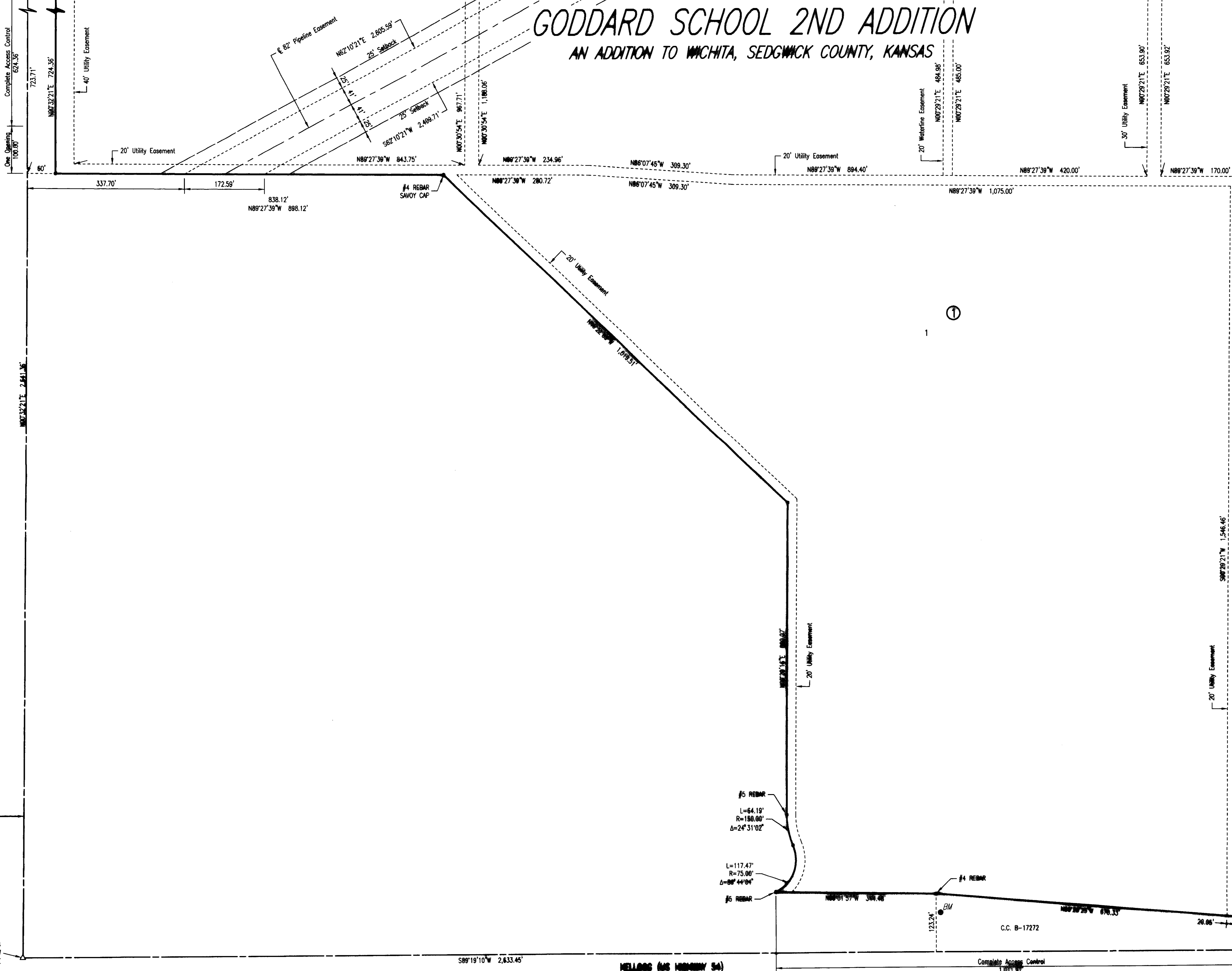
• = 1/2" REBAR W/PEC CAP UNLESS OTHERWISE NOTED

BENCHMARKS *BM*

BENCHMARK: CHISELED "a" ON WEST END OF WAFER TO BE 100' S. AND 130' E. OF THE WEST CORNER, SEC. 27, T27S, R2W. ELEV. = 1433.36 (M.S.L.)

BENCHMARK: RAB BRASS DISK SET IN CONCRETE, 10' W. AND 100' N. OF THE N.E. CORNER, SW1/4, SEC. 27, T27S, R2W. ELEV. = 1416.67 (M.S.L.)

BENCHMARK: RAB BRASS DISK SET IN CONCRETE, 60' W. AND 83' N. OF THE S.E. CORNER, SW1/4, SEC. 27, T27S, R2W. ELEV. = 1416.96 (M.S.L.)



C. 167TH STREET WEST - SECTION LINE

WELLOS (AS MEMOR 54)

C.C. B-17272

SW COR SW 1/4
SEC. 27, T27S, R2W
#5 REBAR IN THIMBLE

#4 REBAR
SAVOY CAP
SE COR. SW 1/4
SEC. 27, T27S, R2W
#4 REBAR IN THIMBLE

FILE COPY
GODDARD SCHOOL 2ND ADDITION
 AN ADDITION TO WICHITA, SEDGWICK COUNTY, KANSAS

FINAL TRACING REC'D

8-13-08
 SUB 2008-56

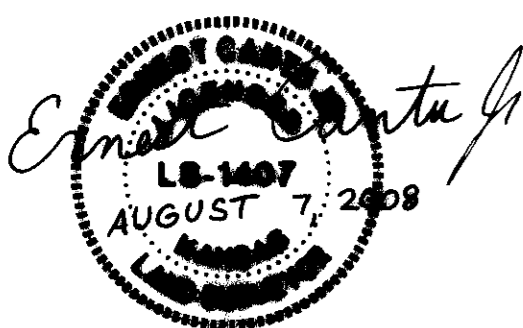
STATE OF KANSAS)
) SS
 COUNTY OF SEDGWICK)

WE, PROFESSIONAL ENGINEERING CONSULTANTS, P.A., ENGINEERS AND SURVEYORS IN AFORESAID STATE AND COUNTY, DO HEREBY CERTIFY THAT OF THIS _____ DAY OF _____, 2008, WE HAVE SURVEYED AND PLATTED GODDARD SCHOOL 2ND ADDITION, AN ADDITION TO WICHITA, SEDGWICK COUNTY, KANSAS, INTO A LOT, BLOCK, AND RESERVES. THE SAME BEING DESCRIBED AS FOLLOWS:

A TRACT OF LAND IN THE NORTHWEST QUARTER AND SOUTHWEST QUARTER OF SECTION 27, TOWNSHIP 27 SOUTH, RANGE 2 WEST OF THE SIXTH PRINCIPAL MERIDIAN, SEDGWICK COUNTY, KANSAS, INCLUDING A REPLAT OF LOT 1, BLOCK 3, AND A REPLAT OF A PORTION OF LOTS 3 AND 4, BLOCK 2, NEVILLE WEST ADDITION, WICHITA, SEDGWICK COUNTY, KANSAS DESCRIBED AS:

BEGINNING AT THE SOUTHWEST CORNER OF THE NORTHWEST 1/4, SECTION 27, TOWNSHIP 27 SOUTH, RANGE 2 WEST; THENCE BEARING N00°27'23"E, ALONG THE WEST LINE OF SAID NORTHWEST 1/4, A DISTANCE OF 400.02 FEET; THENCE BEARING N00°54'52"E, ALONG THE SOUTH LINE OF GODDARD SCHOOL ADDITION, A DISTANCE OF 1830.71 FEET TO THE SOUTHWEST CORNER OF GODDARD SCHOOL ADDITION; THENCE BEARING N00°23'44"E A DISTANCE OF 800.02 FEET TO THE NORTHEAST CORNER OF RESERVE A, GODDARD SCHOOL ADDITION; THENCE BEARING S00°56'13"E, A DISTANCE OF 800.01 FEET TO THE EAST LINE OF SAID NORTHWEST 1/4; THENCE BEARING S00°23'44"W, ALONG THE EAST LINE OF SAID NORTHWEST 1/4, A DISTANCE OF 1017.95 FEET TO THE SOUTHWEST CORNER OF THE NORTHWEST 1/4; THENCE BEARING S00°20'21"W, ALONG THE EAST LINE OF THE SOUTHWEST 1/4, SECTION 27, TOWNSHIP 27 SOUTH, RANGE 2 WEST, A DISTANCE OF 2873.34 FEET TO THE NORTH LINE OF THE US 54 HIGHWAY RIGHT-OF-WAY, DESCRIBED IN CONDEMNATION CASE B-17272; THENCE BEARING N00°28'25"W, ALONG SAID US 54 RIGHT-OF-WAY, A DISTANCE OF 670.33 FEET TO THE SOUTHWEST CORNER OF LOT 1, BLOCK 3, NEVILLE WEST ADDITION, WICHITA, SEDGWICK COUNTY, KANSAS; THENCE BEARING N00°01'57"W, ALONG THE SOUTH LINE OF SAID LOT 1, BLOCK 3, A DISTANCE OF 344.48 FEET TO THE EAST RIGHT-OF-WAY OF WOODBINE CIRCLE; THENCE ALONG THE EAST RIGHT-OF-WAY LINE OF WOODBINE CIRCLE ON A CURVE TO THE LEFT HAVING A RADIUS OF 75.00 FEET, THROUGH A CENTRAL ANGLE OF 89°44'04", AN ARC DISTANCE OF 117.47 FEET, AND HAVING A CHORD BEARING OF N20°50'25"E AND A DISTANCE OF 105.82 FEET, TO THE P.C. OF A CURVE TO THE RIGHT HAVING A RADIUS OF 150.00 FEET THROUGH A CENTRAL ANGLE OF 24°31'02", AN ARC DISTANCE OF 64.19 FEET; THENCE BEARING N00°29'16"E A DISTANCE OF 144.31 FEET TO THE NORTHWEST CORNER OF SAID LOT 1, BLOCK 3; THENCE BEARING N00°29'16"E, A DISTANCE OF 150.05 FEET TO THE SOUTH LINE OF LOT 4, BLOCK 2, NEVILLE WEST ADDITION; THENCE CONTINUING BEARING N00°29'16"W, A DISTANCE OF 357.73 FEET TO A POINT ON THE NORTHEASTERLY LINE OF LOT 3, BLOCK 2, NEVILLE WEST ADDITION; THENCE BEARING N46°22'09"W ALONG THE NORTHEASTERLY LINE OF BLOCK 2, A DISTANCE OF 580.48 FEET TO THE NORTH CORNER OF SAID LOT 1, BLOCK 2, NEVILLE WEST ADDITION; THENCE BEARING N46°22'09"W, A DISTANCE OF 439.02 FEET; THENCE BEARING N89°27'38"W, A DISTANCE OF 808.12 FEET TO THE WEST LINE OF THE SOUTHWEST 1/4, SECTION 27; THENCE BEARING N00°32'21"E, ALONG THE WEST LINE OF THE SOUTHWEST 1/4, A DISTANCE OF 723.71 FEET; THENCE BEARING N00°54'51"E, A DISTANCE OF 253.71 FEET; THENCE BEARING N00°32'21"E, A DISTANCE OF 253.71 FEET TO THE NORTH LINE OF THE SOUTHWEST 1/4, SECTION 27; THENCE BEARING S89°54'51"W, A DISTANCE OF 253.71 FEET TO THE POINT OF BEGINNING.

ALL PUBLIC EASEMENTS AND DEDICATED STREETS LYING WITHIN THE ABOVE DESCRIBED TRACT OF LAND ARE HEREBY VAGATED AND REPLATTED BY VIRTUE OF KSA 12-512(b) AMENDED.



ERNEST CANTU JR., L.S. NO. 1407
 PROFESSIONAL ENGINEERING CONSULTANTS, P.A.

EASEMENTS FOR THE CONSTRUCTION AND MAINTENANCE OF PUBLIC UTILITIES AND DRAINAGE ARE HEREBY GRANTED.

ACCESS CONTROLS AS INDICATED ARE HEREBY GRANTED TO THE APPROPRIATE GOVERNING BODY.

RESERVES 'A' AND 'B' ARE HEREBY PLATTED FOR DRAINAGE, ACCESS Ditches, RECREATIONAL USES, SIDEWALKS, LANDSCAPING, AND UTILITIES CONFINED TO EASEMENTS. RESERVES 'A' AND 'B' SHALL BE OWNED AND MAINTAINED BY THE OWNER OF LOT 1, BLOCK 1, GODDARD SCHOOL 2ND ADDITION.

A DRAINAGE PLAN HAS BEEN APPROVED FOR THIS PLAT. ALL DRAINAGE EASEMENTS, RIGHTS-OF-WAY, OR RESERVES SHALL REMAIN AT ESTABLISHED GRADIES AND UNOBTSTRUCTED TO ALLOW FOR THE CONVEYANCE OF STORM WATER, UNLESS MODIFIED WITH THE APPROVAL OF THE CITY ENGINEER.

KNOW ALL MEN BY THESE PRESENTS THAT WE, THE UNDERSIGNED PROPERTY OWNER OF THE LAND AS ABOVE SET FORTH IN THE SURVEYOR'S CERTIFICATE, HAVE CAUSED THE LAND TO BE SURVEYED AND PLATTED INTO A LOT, BLOCK, AND RESERVES. THE SAME TO BE KNOWN AS GODDARD SCHOOL 2ND ADDITION, AN ADDITION TO WICHITA, SEDGWICK COUNTY, KANSAS.

OWNERS:
 UNIFIED SCHOOL DISTRICT NO. 265, GODDARD, SEDGWICK COUNTY, KANSAS

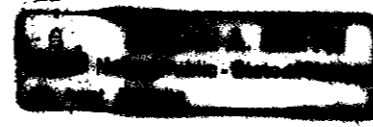
Charles S. Edmonds
 CHARLES S. EDMONDS, SUPERINTENDENT

STATE OF KANSAS)
) SS
 COUNTY OF SEDGWICK)

THIS INSTRUMENT WAS ACKNOWLEDGED BEFORE ME ON THIS 11th DAY OF August, 2008, BY CHARLES S. EDMONDS, SUPERINTENDENT, UNIFIED SCHOOL DISTRICT NO. 265, GODDARD, SEDGWICK COUNTY, KANSAS.

Susan A. Smith, NOTARY PUBLIC
 SUSAN A. SMITH

MY APPOINTMENT EXPIRES: April 9, 2009



THIS PLAT OF GODDARD SCHOOL 2ND ADDITION, AN ADDITION TO WICHITA, SEDGWICK COUNTY, KANSAS, HAS BEEN SUBMITTED TO AND APPROVED BY THE WICHITA-SEGWICK COUNTY METROPOLITAN AREA PLANNING COMMISSION, WICHITA, KANSAS.

DATED THIS _____ DAY OF _____, 2008.

WICHITA-SEGWICK COUNTY METROPOLITAN AREA PLANNING COMMISSION

_____, CHAIR
 M.S. MITCHELL

_____, SECRETARY
 JOHN L. SCHLEGEL

REVIEWED IN ACCORDANCE WITH K.S.A. 58-2005 ON THIS _____ DAY OF _____, 2008.

TRICIA L. ROBELLO, LS #1246
 DEPUTY COUNTY SURVEYOR
 SEDGWICK COUNTY, KANSAS

THIS PLAT IS APPROVED AND ALL DEDICATIONS SHOWN HEREON, IF ANY ARE ACCEPTED BY THE CITY COUNCIL OF THE CITY OF WICHITA, KANSAS, THIS _____ DAY OF _____, 2008.

_____, MAYOR
 CARL BREWER

_____, CITY CLERK
 KAREN SUBLETT

ENTERED ON TRANSFER RECORD THIS _____ DAY OF _____, 2008.

_____, COUNTY CLERK
 DON BRACE

THIS IS TO CERTIFY THAT THIS INSTRUMENT WAS FILED FOR RECORD IN THE REGISTER OF DEEDS OFFICE AT _____ M., ON THE _____ DAY OF _____, 2008.

_____, REGISTER OF DEEDS
 BILL WEEK

_____, DEPUTY
 TONYA BUCKINGHAM